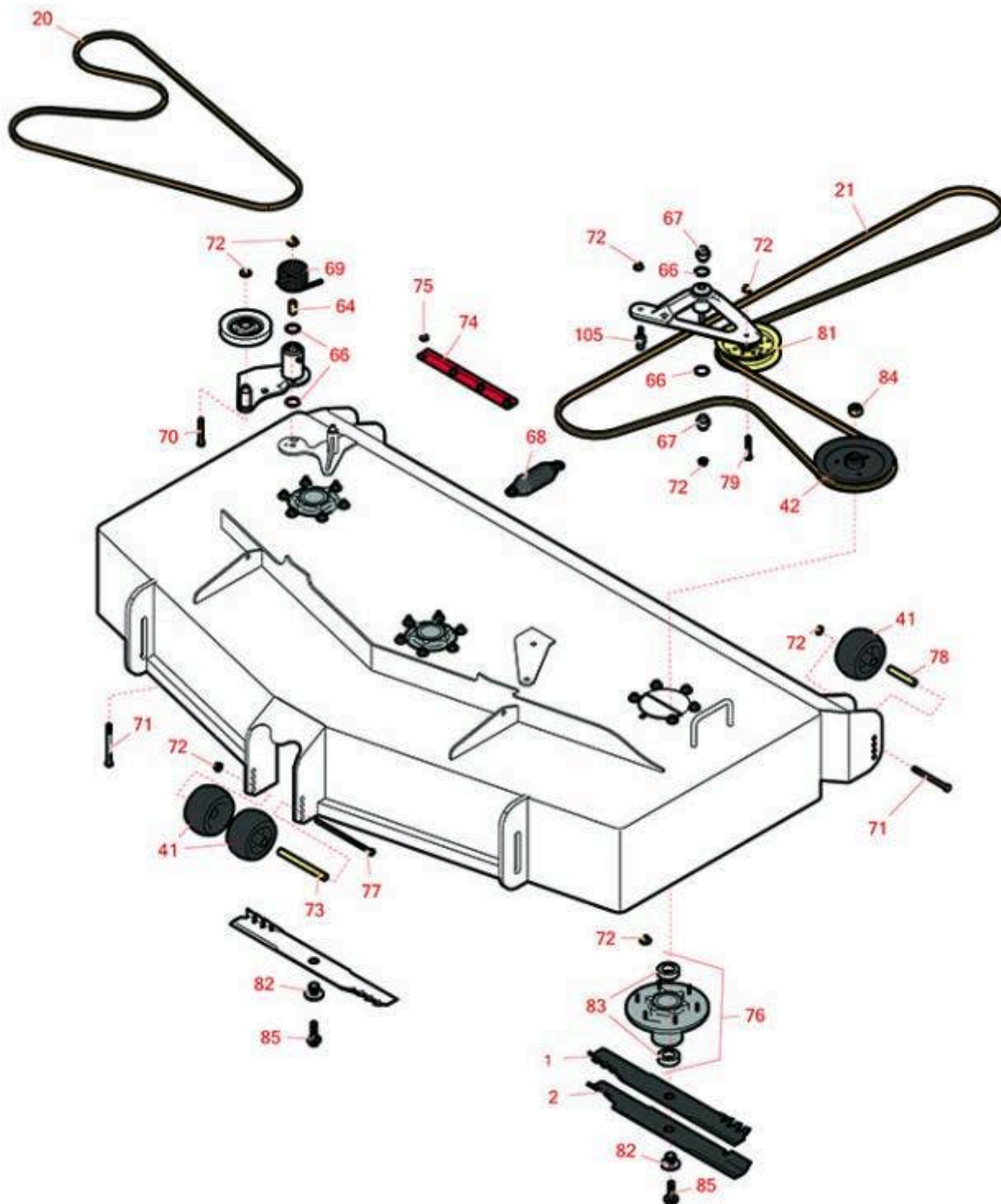




Replaces Exmark Lazer Z S-Series Parts

Zero Turn Mower with 60in Deck - Models LZS801CKA60RA1
60in Deck



All original equipment manufacturers names and part numbers are used for identification purposes only, and we are in no way implying that our products are original equipment parts. Prices subject to change without notice.



Replaces Exmark Lazer Z S-Series Parts

Zero Turn Mower with 60in Deck - Models LZS801CKA60RA1
60in Deck



Item No	R&R Part No.	OEM Part No.	Description	Qty Req	Order Quantity
Blades					
1	RRB4065-2001	116-5174, 116-5174-S	Mower Blade - Mulcher 20.5 x 2.5in x 15/16 Mt Hole	2	
2	RRB3065-2001	103-6403, 103-6403-S	Mower Blade - High-Lift 20.5 x 2.5in x 15/16 Mt Hole	2	
<i>Detail Description: R&R Products rotary blades are manufactured in the USA with superior alloy steel and hardened for extended life. Lifetime guaranteed against defects in material and workmanship.:</i>					
Belts					
20	R116-8187	116-8187	Belt - V - Deck	1	
21	R125-9371	125-9371	Belt - V - Deck	1	
Other parts					
41	R68-2730	1-603299	Wheel - Anti Scalp	4	
42	R116-0676	116-0676	Sheave,blade Drive - 14T Spline Hub	1	
64	R108-6544	108-6544	Spacer	1	
65	R126-0423	126-0423	Pin - Spring - Anchor	1	
66	R106-7159	106-7159	O-Ring	4	
67	R103-3504	103-3504	Bearing - Spherical	2	
68	R116-6317	116-0133, 116-6317	Spring - Extension	1	
69	R108-1921	108-1921	Torsion Spring - Idler	1	
70	R323-13	323-13	Bolt - Hex HD 3/8-16 x 2-3/4 GR5	1	
71	R323-23	323-23	Bolt - Hex HD 3/8-16 x 4-1/2	3	

All original equipment manufacturers names and part numbers are used for identification purposes only, and we are in no way implying that our products are original equipment parts. Prices subject to change without notice.



Replaces Exmark Lazer Z S-Series Parts

Zero Turn Mower with 60in Deck - Models LZS801CKA60RA1
60in Deck



Item No	R&R Part No.	OEM Part No.	Description	Qty Req	Order Quantity
72	R104-8301	104-8301, 109-6658	Locknut - 3/8-16 Nylon Flanged	31	
73	R98-5967	98-5967	Spacer-Wheel	1	
74	R126-0413-01	126-0413-01	Support - Outer Flap	2	
75	R104-8300	104-8300, 119-4041	Locknut - 5/16-18 Flanged Y/Zinc	15	
76	R116-3344	116-3344	Spindle Housing Assy	3	
77	R108-5388	108-5388	Bolt - Hx HD 3/8-16 x 7 1/2	1	
78	R98-7912	98-7912	Bushing - Spanner Wheel	2	
79	R104-3396	104-3396	Bolt - Hex HD 3/8-16 x 2-1/4	1	
81	R126-9196	126-9196	Idler Pulley - Flat	1	
82	R103-3037	103-3037	Splined Bushing	3	
83	R116-0720	116-0720	Bearing - Ball - Special Triple Seal	6	
84	R116-7306	116-7306	Hex Nut - 3/4-16 with Nyloc	3	
85	R109-9220	109-9220	Bolt - Sems 1/2-20	3	

All original equipment manufacturers names and part numbers are used for identification purposes only, and we are in no way implying that our products are original equipment parts. Prices subject to change without notice.