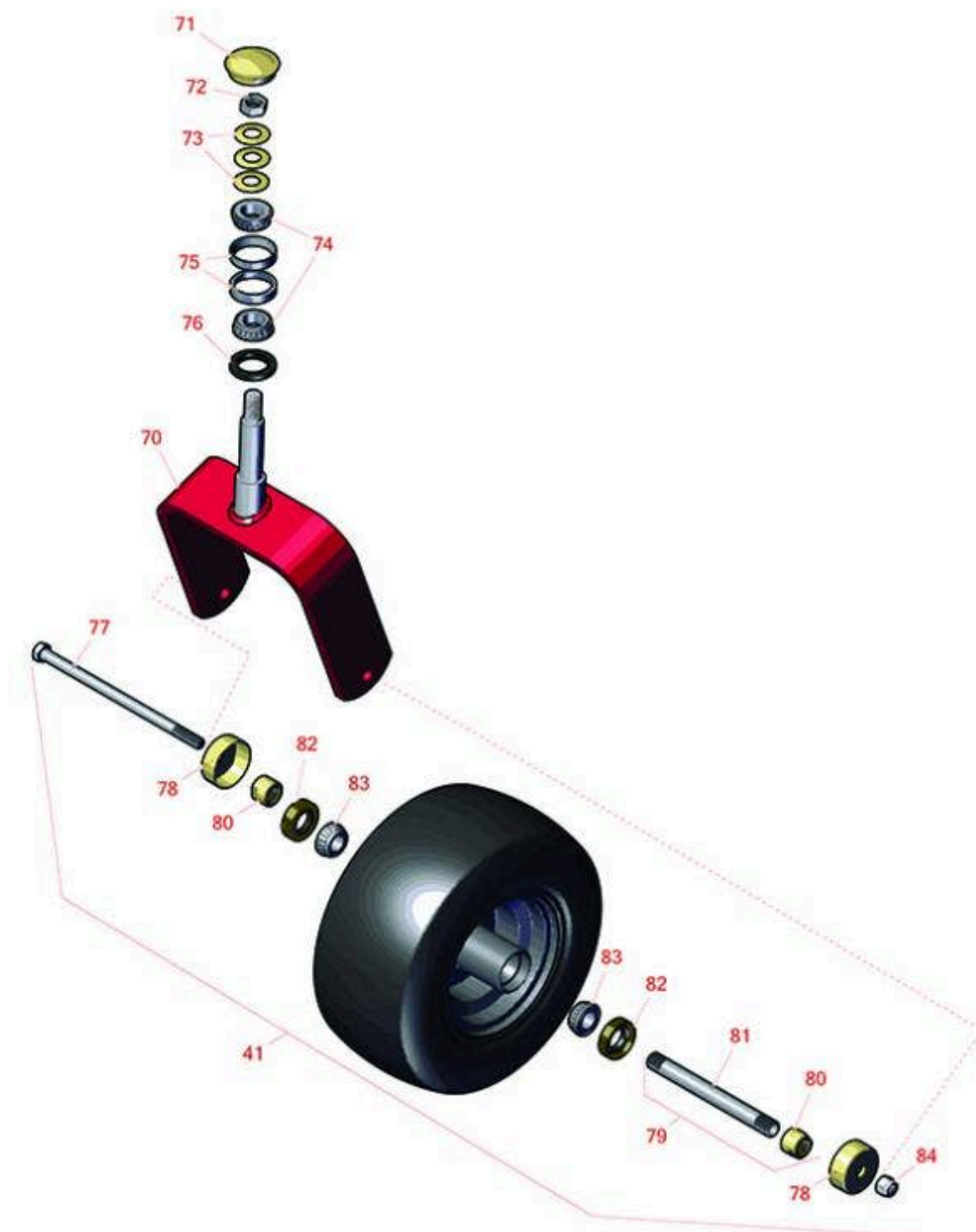




# Replaces John Deere 1570 Rotary Mower Parts

60, 62 or 72in Rotary Mower  
62in Deck Parts



All original equipment manufacturers names and part numbers are used for identification purposes only, and we are in no way implying that our products are original equipment parts. Prices subject to change without notice.



# Replaces John Deere 1570 Rotary Mower Parts

60, 62 or 72in Rotary Mower  
62in Deck Parts



Item No	R&R Part No.	OEM Part No.	Description	Qty Req	Order Quantity
---------	--------------	--------------	-------------	---------	----------------

## Rotary Blades

1	RM144935	M144935, TCU51118	Mower Blade - Mulcher - 22 x 3 x 1/4 in	3	
---	----------	----------------------	---	---	--

## Belts

20	RTC33435	TCU33435	Belt - V - 62 in Deck	1	
----	----------	----------	-----------------------	---	--

## Other Parts Available

40	RM115245	M115245	Roller	4	
45	RM124203	M124203	Shaft	1	
48	RM132309	M132309	Spacer	2	
49	RTC39458	TCU39458	Plate - Spindle Mount Reinforcement	9	
74	R14M7401	14M7401	Locknut - 12mm x 1.75	2	
78	R14M7465	14M7465	Lock Nut - M10-1.50 Fl	10	
80	RTCA24881	TCA24881	Spindle - Includes RM134305; Sub For TCA51058; Housing Assembly	3	
81	R471217	JD7803	Fitting - Grease	3	
82	RM123569	M123569	Flange Nut	3	
83	RTC38142	TCU14182, TCU38142	Hub - Sub For TCU51119 or TCU14182	3	
84	RTC51223	TCU51223	Deflector - Grass	3	
85	R19M7868	19M7868	Bolt - M8-1.25 x 30 HHF	30	
86	RM88251	M169375, M88251	Bearing - Spindle	6	
87	R253-133	M85699	Seal - Oil	6	

*Tech Note: FOR SPINDLE ASSEMBLY O.E.M TCA25356 (QTY..6):*

All original equipment manufacturers names and part numbers are used for identification purposes only, and we are in no way implying that our products are original equipment parts. Prices subject to change without notice.



# Replaces John Deere 1570 Rotary Mower Parts

60, 62 or 72in Rotary Mower  
62in Deck Parts



Item No	R&R Part No.	OEM Part No.	Description	Qty Req	Order Quantity
88	<b>RM163060</b>	M133398, M163060	Washer - Replaces RM133398	3	
89	<b>RM134382</b>	M134382	Spindle - 25 mm w/M12-1.75 Blade Bolt Thrd	3	
89	<b>RM163059</b>	M163059	Spindle - 25 mm w/M16-2.0 Blade Bolt Thrd	3	
90	<b>RM163058</b>	M127517, M163058	Bushing - Sub For M127517	3	
91	<b>R14M7396</b>	14M7396	Locknut - Flanged Nyloc	30	
91	<b>R14M7298</b>	14M7298	Nut - 8mm x 1.25 Flanged	30	
<i>Tech Note: FOR SPINDLE ASSEMBLY O.E.M TCA25356:</i>					
92	<b>RTCA17524</b>	TCA17524	Idler Pulley - 5 in Flat Dia with .75 in Brg ID	1	
93	<b>RM127198</b>	M127198	Seal	3	
94	<b>RM163053</b>	M134305, M163053	Grass Deflector - Spindle	3	
95	<b>RM123522</b>	M123522	Washer - Belleville - Blade Bolt	3	
97	<b>R19M7489</b>	19M7489	Bolt Hex HD - M16 x 45 Gr 10.9	3	
98	<b>RM133598</b>	M133598	Shield	2	
100	<b>RM136044</b>	M136044	Spring - Extension	1	
101	<b>RM141764</b>	M141764	Eyebolt - Includes Flanged Locknut	1	

All original equipment manufacturers names and part numbers are used for identification purposes only, and we are in no way implying that our products are original equipment parts. Prices subject to change without notice.