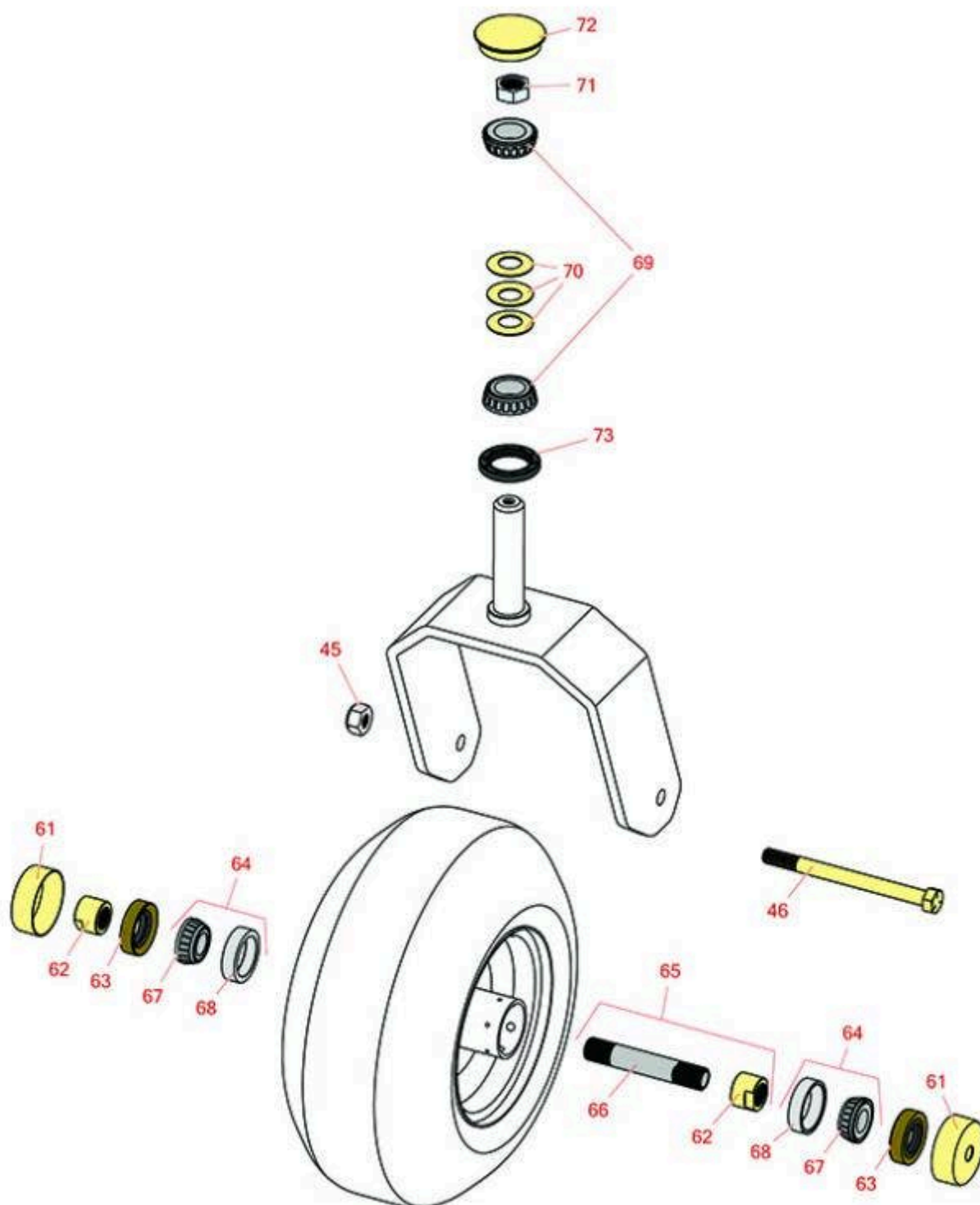




# Replaces Exmark Turf Tracer X-Series Parts

Walk Behind Mower - Model TTX730EKC52400 with 52in  
Deck  
Caster Wheel



All original equipment manufacturers names and part numbers are used for identification purposes only, and we are in no way implying that our products are original equipment parts. Prices subject to change without notice.



# Replaces Exmark Turf Tracer X-Series Parts

Walk Behind Mower - Model TTX730EKC52400 with 52in Deck  
Caster Wheel



Item No	R&R Part No.	OEM Part No.	Description	Qty Req	Order Quantity
---------	--------------	--------------	-------------	---------	----------------

## Other Parts Available

45	<b>R3296-25</b>	3296-45	Locknut - 1/2-13 Heavy ESNA	2
46	<b>R325-20</b>	325-20	Bolt - Hx HD 1/2-13 x 6	2
61	<b>R103-2768</b>	103-2768	Guard - Seal	4
62	<b>R103-3051</b>	103-3051	Spacer - Nut - Hardened	4
63	<b>R103-0063</b>	103-0063	Seal - Grease	4
64	<b>R500534</b>	1-633585, R & R ONLY	Bearing - with Cup	4

*Detail Description: Kit includes: 1 ea R254-78- Bearing Cone & R254-79 Bearing Cone:*

65	<b>R126-5359</b>	126-5359	Caster Axle Assy w/Bushing	2
66	<b>R103-3157</b>	103-3157	Axle - Caster Wheel	2
67	<b>R254-78</b>	1-633585	Tapered Bearing Cone	4
68	<b>R254-79</b>	1-633584, R & R ONLY	Cup - Bearing	4

*Detail Description: Use R254-79M installation mandrel to properly install race.:*

69	<b>R254-94</b>	1-543509	Tapered Bearing Cone	4
70	<b>R1-633508</b>	1-633508	Washer - Spring Disc	6
71	<b>R3296-51</b>	3296-51	Nut - Nylon Lock 3/4-10 Gr 8	2
72	<b>R103-4882</b>	103-4882	Grease Cap - Castor	2
73	<b>R1-543511</b>	1-543511, R & R ONLY	Seal- Grease	2

All original equipment manufacturers names and part numbers are used for identification purposes only, and we are in no way implying that our products are original equipment parts. Prices subject to change without notice.