

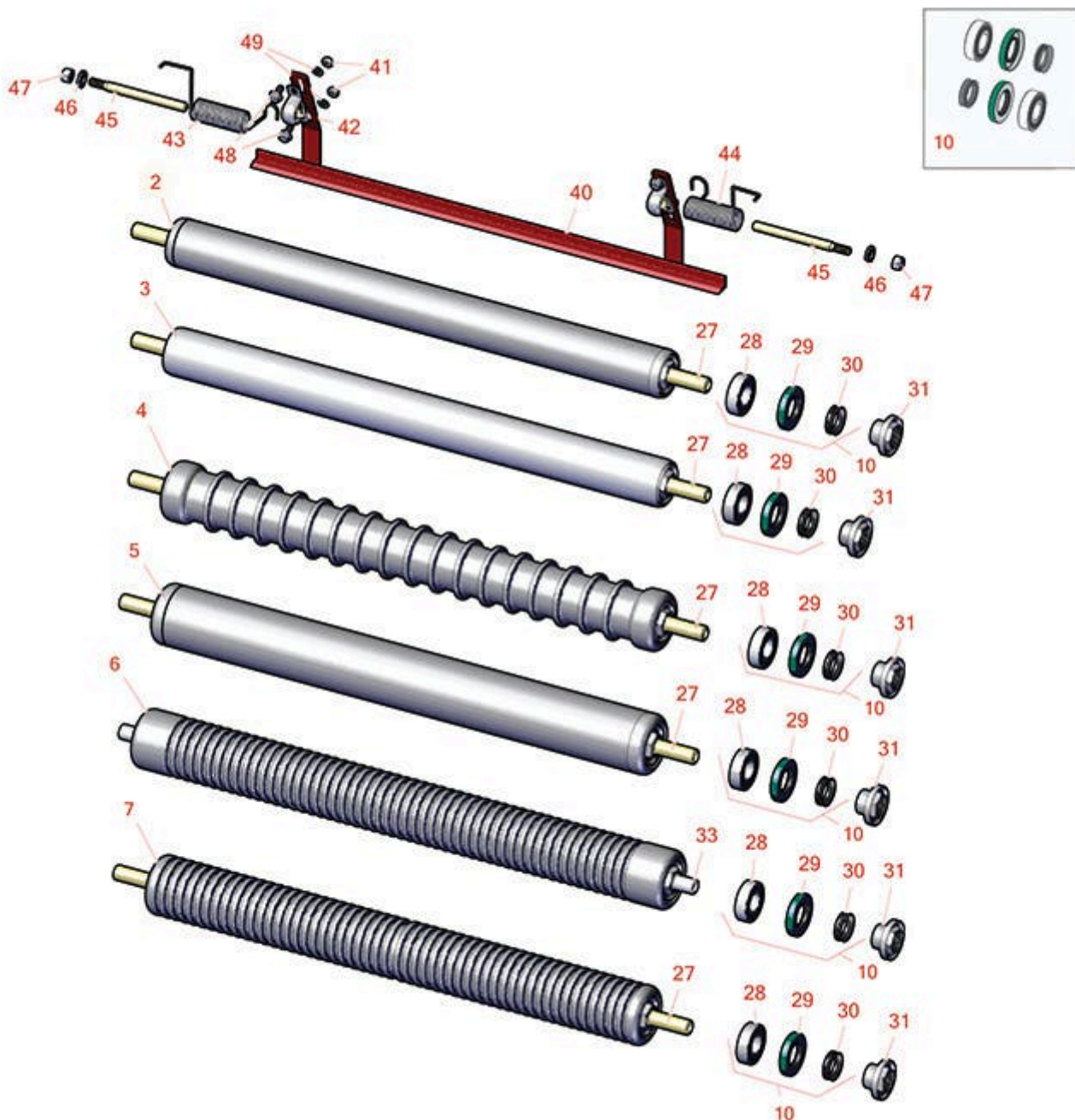


Replaces Toro Greensmaster eTriFlex

3360 Parts

Dethatching Unit - Model 04720

Rollers



All original equipment manufacturers names and part numbers are used for identification purposes only, and we are in no way implying that our products are original equipment parts. Prices subject to change without notice.



Replaces Toro Greensmaster eTriFlex

3360 Parts

Dethatching Unit - Model 04720
Rollers



| Item No | R&R Part No. | OEM Part No. | Description | Qty Req | Order Quantity |
|---------|--------------|--------------|-------------|---------|----------------|
|---------|--------------|--------------|-------------|---------|----------------|

Overhaul Kits and Service Tools

| | | | | | |
|----|------------------|----------|-----------------------|---|--|
| 10 | R107-1594 | 107-1594 | Overhaul Kit - Roller | 1 | |
|----|------------------|----------|-----------------------|---|--|

Detail Description: Includes 2 ea.: R106-6941 Seals, R106-6942 V-Rings & R251-347 Bearings:

Rollers

| | | | | | |
|---|------------------|---|---------------------------------|---|--|
| 2 | R140-5560 | 105-5776, 106-6945, 107-3509, 119-4093, 120-9595, 140-5560 | Roller - Smooth 2 in Steel Rear | 1 | |
|---|------------------|---|---------------------------------|---|--|

| | | | | | |
|---|------------------|----------|---|---|--|
| 3 | R115-7356 | 115-7356 | Roller - Smooth Tubular Aluminum - 2 in Dia | 1 | |
|---|------------------|----------|---|---|--|

Detail Description: Constructed with a through shaft, this light weight aluminum roller uses a through shaft and ball bearings.:

| | | | | | |
|---|------------------|----------|---|---|--|
| 4 | R115-7386 | 115-7386 | Roller - Wide Grooved Machined Aluminum - 2-1/2 Dia | 1 | |
|---|------------------|----------|---|---|--|

Detail Description: Constructed with a through shaft, this aluminum roller is machined with 1-1/8" wide grooves for the least amount of ground contact and uses ball bearings.:

| | | | | | |
|---|------------------|-----------------------|--|---|--|
| 5 | R115-7388 | 115-7388, 140-5681 | Roller - Smooth Tubular Steel 2-1/2 in Dia | 1 | |
|---|------------------|-----------------------|--|---|--|

Detail Description: Constructed with a through shaft, this steel roller uses a through shaft and ball bearings.:

| | | | | | |
|---|------------------|----------|------------------------------------|---|--|
| 6 | R121-4675 | 121-4675 | Roller - Extended Machined Grooved | 1 | |
|---|------------------|----------|------------------------------------|---|--|

| | | | | | |
|---|------------------|----------|---|---|--|
| 7 | R115-7360 | 115-7360 | Roller - Narrow Grooved Machined Aluminum - 2 1/2 | 1 | |
|---|------------------|----------|---|---|--|

Detail Description: Constructed with a through shaft, this aluminum roller is machined with narrow grooves and uses ball bearings.:

Other Parts Available

All original equipment manufacturers names and part numbers are used for identification purposes only, and we are in no way implying that our products are original equipment parts. Prices subject to change without notice.



Replaces Toro Greensmaster eTriFlex

3360 Parts

*Dethatching Unit - Model 04720
Rollers*



| Item No | R&R Part No. | OEM Part No. | Description | Qty Req | Order Quantity |
|---------|---------------------|---|-------------------------------|---------|----------------|
| 27 | R119-4090 | 119-4090 | Shaft - Roller - Hardened | 1 | |
| 28 | R251-347 | 251-347, 72-5690 | Bearing - Ball | 2 | |
| 29 | R106-6941 | 106-6941 | Seal - Double Lip | 2 | |
| 30 | R106-6942 | 106-6942 | V-Ring - Roller | 2 | |
| 31 | R114-3745 | 106-6939, 108-3151, 114-3745, 114-5411 | Locknut - Bearing - Stainless | 2 | |
| 32 | R120-5404 | 120-5404 | Shaft- Roller | 1 | |
| 40 | R106-9095-01 | 106-9095-01 | Scraper - Assy | 1 | |
| 41 | R33023-00 | 33023-00, 48-7900, 49-7810 | Locknut - ESNA 6mm x 1.0 | 4 | |
| 42 | R256-239 | 256-239 | Bearing | 2 | |
| 43 | R106-9093 | 106-9093 | Spring - RH - SS | 1 | |
| 44 | R106-9094 | 106-9094 | Spring - LH - SS | 1 | |
| 45 | R106-9091 | 106-9091 | Pin - Scraper | 2 | |
| 46 | R33094-00 | 33094-00, 93-5914 | Washer - Flat - 8mm Hardened | 2 | |
| 47 | R33024-00 | 33024-00 | Locknut - 8mm x 1.25 | 2 | |
| 48 | R33113-016 | 33113-016, 48-7620 | Bolt - Hex Washer M6-1.0 x 12 | 4 | |
| 49 | R24M7139 | 24M7139, 3256-16, 33093-00, 43-5930 | Washer - Flat 6mm | 4 | |

All original equipment manufacturers names and part numbers are used for identification purposes only, and we are in no way implying that our products are original equipment parts. Prices subject to change without notice.