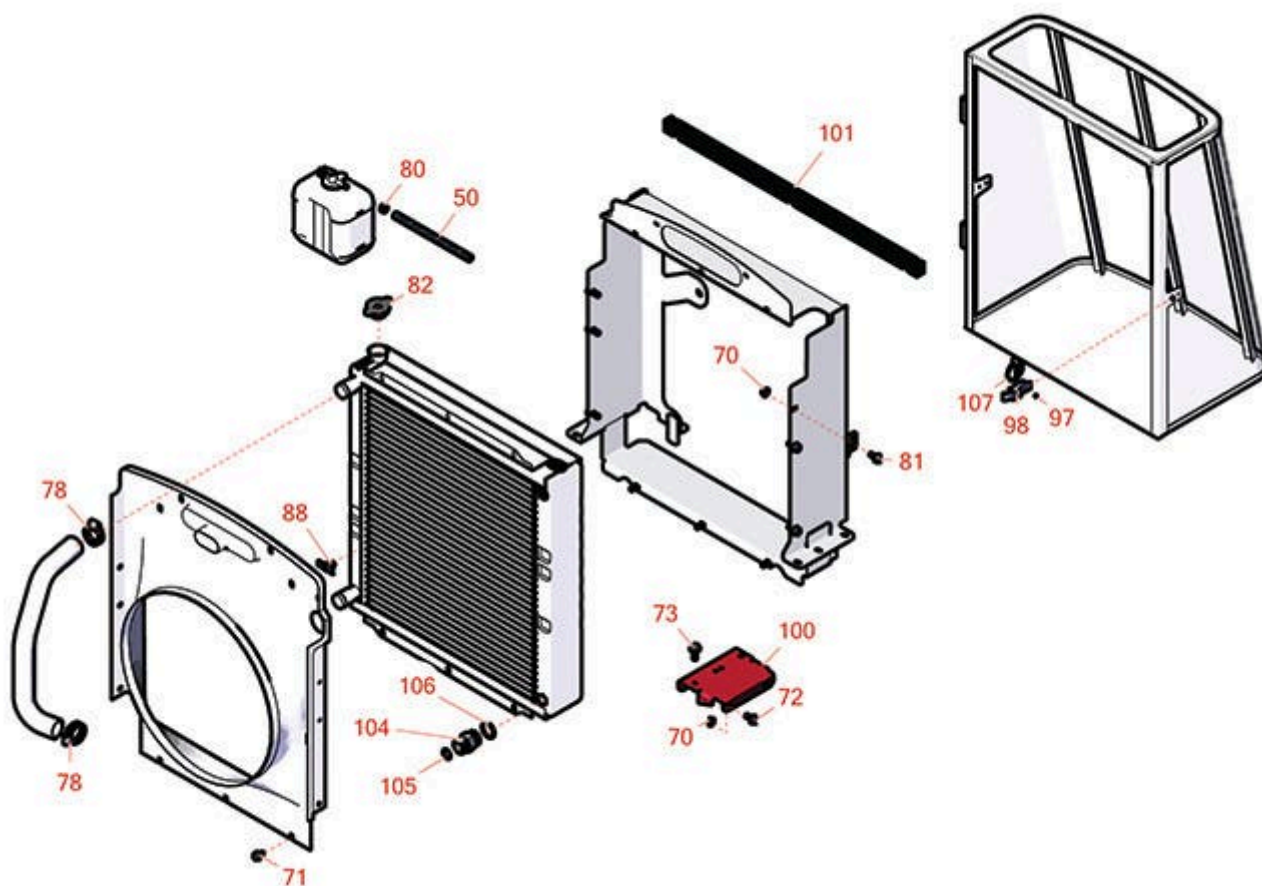




## Replaces Toro Reelmaster 5410-D Parts

*Traction Unit - with Yanmar Engine  
Radiator & Cooling System*



All original equipment manufacturers names and part numbers are used for identification purposes only, and we are in no way implying that our products are original equipment parts. Prices subject to change without notice.



## Replaces Toro Reelmaster 5410-D Parts

*Traction Unit - with Yanmar Engine  
Radiator & Cooling System*



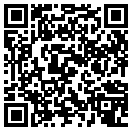
Item No	R&R Part No.	OEM Part No.	Description	Qty Req	Order Quantity
50	<b>R110-8752</b>	110-8752	Hose-Fuel	1	
70	<b>R104-8300</b>	104-8300, 104-8300 , 119-4041	Locknut - 5/16-18 Flanged Y/Zinc	10	
71	<b>R3234-30</b>	3234-30	Bolt - Whiz Flange Hex HD 5/16-18 x 1/2	14	
72	<b>R3234-5</b>	3234-5, 62-3310	Bolt - 5/16-18x3/4 Hx Ser Was HD	5	
73	<b>R32144-14</b>	32104-32, 32104-49, 32144-14	Bolt - Hex Washer 5/16-18 x 5/8	6	
78	<b>R2412-3</b>	2412-3, 99-0782	Clamp - Hose - 1 1/16-2	4	
80	<b>R92-2379</b>	92-2379	Clamp - Hose	2	
81	<b>R3274-55</b>	3274-55	Bolt - 5/16-18 x 3/4 Button HD Soc	5	
82	<b>R93-5957</b>	120-1690, 93-5957	Cap - Radiator	1	
88	<b>R304-46</b>	304-46	Draincock	1	
97	<b>R3290-382</b>	3269-15, 3290-382	Rivet - 5/32 x 1/2 Pop Rivet	2	
98	<b>R115-1554</b>	105-3912, 115-1554	Latch-Draw	1	
100	<b>R110-5310-01</b>	110-5310-01	Bracket-Mounting	2	
101	<b>R110-5276</b>	110-5276	Seal-Foam-Radiator	2	
104	<b>R340-9</b>	340-9	Fitting - Straight Connector	1	
105	<b>R237-58</b>	237-58	O-Ring	1	

All original equipment manufacturers names and part numbers are used for identification purposes only, and we are in no way implying that our products are original equipment parts. Prices subject to change without notice.



## Replaces Toro Reelmaster 5410-D Parts

*Traction Unit - with Yanmar Engine  
Radiator & Cooling System*



Item No	R&R Part No.	OEM Part No.	Description	Qty Req	Order Quantity
106	<b>R237-81</b>	237-81, 237.81, 327-81	O-Ring	1	
107	<b>R150977</b>	115-1556	Pin - 5/16 Lynch	1	

All original equipment manufacturers names and part numbers are used for identification purposes only, and we are in no way implying that our products are original equipment parts. Prices subject to change without notice.