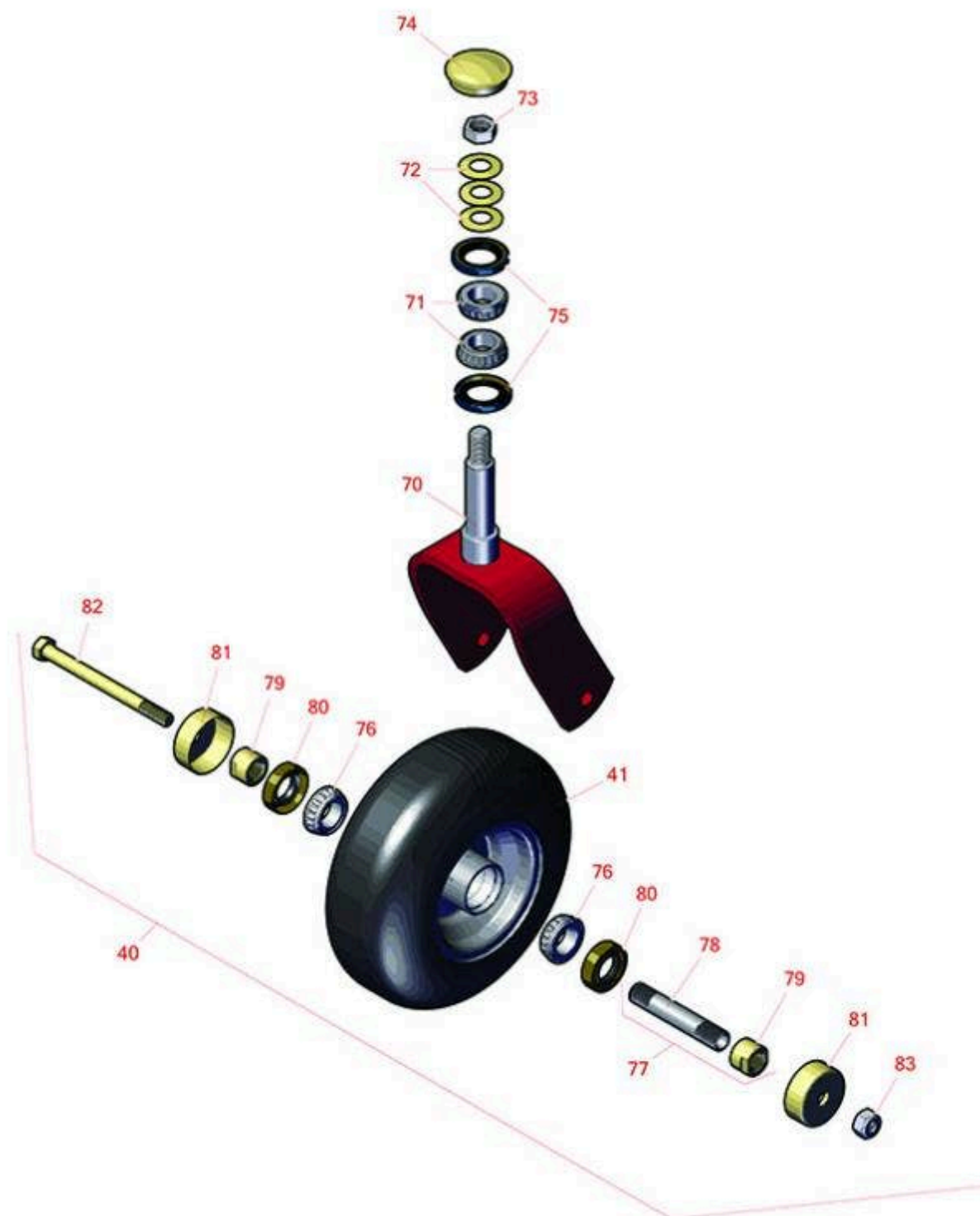




Replaces Toro GrandStand Mower Parts

Mower with 48in Deck - Model 74578

Caster Wheel



All original equipment manufacturers names and part numbers are used for identification purposes only, and we are in no way implying that our products are original equipment parts. Prices subject to change without notice.



Replaces Toro GrandStand Mower Parts

Mower with 48in Deck - Model 74578

Caster Wheel



Item No	R&R Part No.	OEM Part No.	Description	Qty Req	Order Quantity
Tires					
40	R130-4558	112-3810, 112-8310, 130-4558	Wheel-Tire and Bearing Assy	2	
41	R130-4563	110-9965, 130-4563	Wheel and Tire Assy	2	
Other Parts Available					
70	R121-7988-01	121-7988-01	Fork - Caster	2	
<i>Tech Note: Fits Ser# 314000001-314999999;</i>					
70	R103-8618-01	103-8618-01	Fork - Caster	2	
<i>Tech Note: Fits Ser# 313000001-313999999;</i>					
71	R254-94	1-543509, 254-94, 32-8090, 32-8240, 32-9640, 40440, 62-3330	Tapered Bearing Cone	4	
72	R1-633508	1-633508	Washer - Spring Disc	6	
73	R3296-51	3296-51, 3296-81	Nut - Nylon Lock 3/4-10 Gr 8	2	
74	R103-4882	103-4882	Grease Cap - Castor	2	
75	R116-5647	116-5647	Seal - Grease	4	
76	R254-78	01-102-0060, 01-102-0130, 1-633585, 254-78, 32-7790, 32-9580, 93-4813	Tapered Bearing Cone	4	
77	R126-5359	126-5359	Caster Axle Assy w/Bushing	2	

All original equipment manufacturers names and part numbers are used for identification purposes only, and we are in no way implying that our products are original equipment parts. Prices subject to change without notice.



Replaces Toro GrandStand Mower Parts

Mower with 48in Deck - Model 74578

Caster Wheel



Item No	R&R Part No.	OEM Part No.	Description	Qty Req	Order Quantity
78	R103-3157	103-3157	Axle - Caster Wheel	2	
79	R103-3051	103-3051	Spacer - Nut - Hardened	4	
80	R103-0063	103-0063	Seal - Grease	4	
81	R103-2768	103-2768	Guard - Seal	4	
82	R325-20	01-150-1250, 01-178-0848, 325-20	Bolt - Hx HD 1/2-13 x 6	2	
83	R3296-25	30-3380, 32127-21, 32127-31, 3290-160, 3290-33, 3296-13, 3296-25, 3296-45, 329645	Locknut - 1/2-13 Heavy ESNA	2	

All original equipment manufacturers names and part numbers are used for identification purposes only, and we are in no way implying that our products are original equipment parts. Prices subject to change without notice.