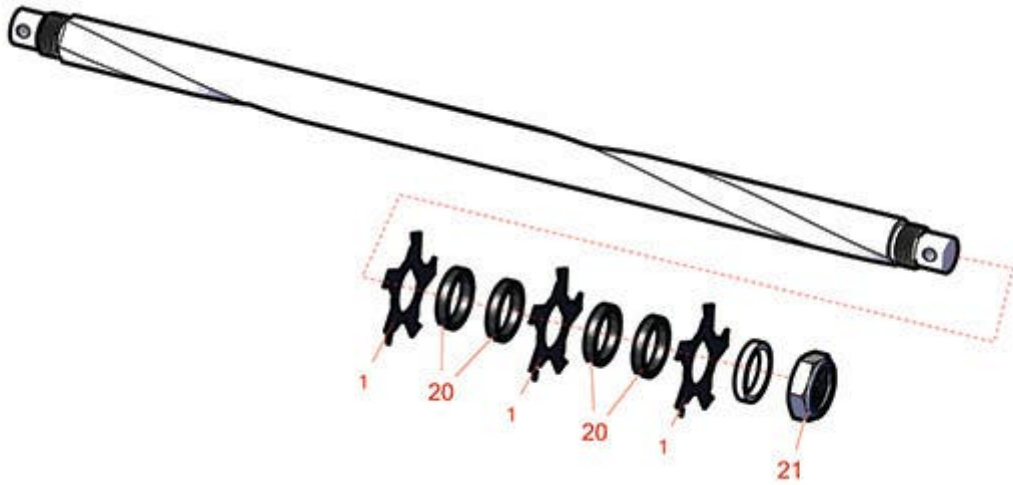




# Replaces Toro Greensmaster 3250-D Parts



*DPA Cutting Unit - Model 04652, 04654 & 04656*  
*Left-Hand Carbide Grooming Reel - 04708*



All original equipment manufacturers names and part numbers are used for identification purposes only, and we are in no way implying that our products are original equipment parts. Prices subject to change without notice.



# Replaces Toro Greensmaster 3250-D Parts



*DPA Cutting Unit - Model 04652, 04654 & 04656  
Left-Hand Carbide Grooming Reel - 04708*

| Item No | R&R Part No. | OEM Part No. | Description | Qty Req | Order Quantity |
|---------|--------------|--------------|-------------|---------|----------------|
|---------|--------------|--------------|-------------|---------|----------------|

## **Blades**

|   |                  |          |  |    |  |
|---|------------------|----------|--|----|--|
| 1 | <b>R110-2343</b> | 110-2343 | Groomer Blade - Carbide Tipped - Helix 1.5mm | 42 |  |
|---|------------------|----------|--|----|--|

## **Other Parts Available**

|    |                  |          |                                 |    |  |
|----|------------------|----------|---------------------------------|----|--|
| 20 | <b>R70-1350</b>  | 70-1350  | Spacer - 1/4 Fits Groomer Shaft | 82 |  |
| 21 | <b>R120-9653</b> | 120-9653 | Locknut - 7/8-14 Nylon Jam GR2  | 2  |  |

All original equipment manufacturers names and part numbers are used for identification purposes only, and we are in no way implying that our products are original equipment parts. Prices subject to change without notice.