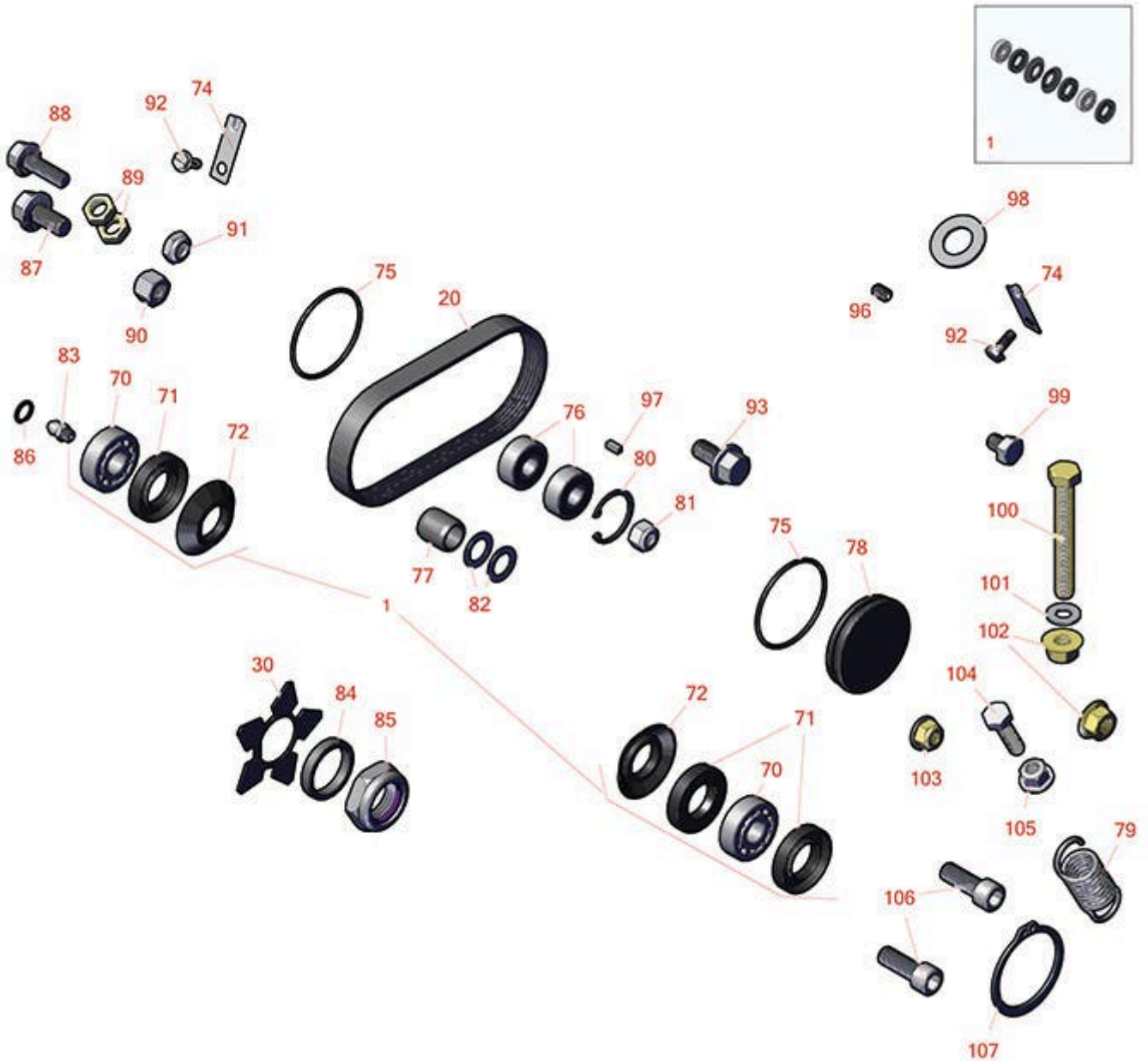




Replaces Toro Reelmaster 5610-D Parts

DPA Cutting Unit - Model 03638, 03639, 03641 & 03643
Left-Hand Groomer Kit - Model 03403



All original equipment manufacturers names and part numbers are used for identification purposes only, and we are in no way implying that our products are original equipment parts. Prices subject to change without notice.



Replaces Toro Reelmaster 5610-D Parts

DPA Cutting Unit - Model 03638, 03639, 03641 & 03643

Left-Hand Groomer Kit - Model 03403



Item No	R&R Part No.	OEM Part No.	Description	Qty Req	Order Quantity
Overhaul Kit					
1	R131-3233	131-3233	Groomer/Rrb Seal Kit	1	
Belt					
20	R110-1716	110-1716	Belt - Groomer	1	
Blades					
30	R112-6963	112-6963	Blade - Groomer	40	
Other Parts Available					
70	R95-0707	95-0707	Bearing - Self Aligning	2	
71	R106-8530	106-8530	Seal - Oil	3	
72	R108-4172	108-4172	Seal - Excluder	2	
74	R104-4754	104-4754	Spring-Detent	2	
75	R112-6967	112-6967	O-Ring	2	
76	R110-1701	110-1701	Bearing	2	
77	R108-4491	108-4491, 127-7139	Spacer - Hardened	1	
78	R105-5761	105-5761	Grommet	1	
79	R110-1700	110-1700, 66-4460	Spring-Extension	1	
80	R32151-60	32151-60	Ring - Snap	1	
81	R3296-47	3296-47	Locknut - 5/16-18 Jam Nyloc	1	
82	R112-6957	112-6957	Washer - Hardened	2	

All original equipment manufacturers names and part numbers are used for identification purposes only, and we are in no way implying that our products are original equipment parts. Prices subject to change without notice.



Replaces Toro Reelmaster 5610-D Parts

DPA Cutting Unit - Model 03638, 03639, 03641 & 03643

Left-Hand Groomer Kit - Model 03403



Item No	R&R Part No.	OEM Part No.	Description	Qty Req	Order Quantity
83	R302-5	21-6010, 302-11, 302-37, 302-47, 302-5, 302-57, 302-58, 302-6, 31-0300, 32-9660, 60-0800, 62-3880, 92-4181	Fitting - Grease	1	
84	R70-1350	70-1350	Spacer - 1/4 Fits Groomer Shaft	2	
85	R32127-46	32127-46, 3296-60	Locknut	2	
86	R237-22	107-8844, 237-22, 237-78	O-Ring	1	
88	R3234-42	3234-42	Bolt - 3/8-16 x 1 Hx HD Fl	1	
89	R3220-3	01-191-0624, 3220-3, 3290-149	Nut - Jam Ball Joint	4	
90	R444850	3296-59	Nut - 3/8-16 Jam Center Lock	1	
91	R3296-59	3296-59	Locknut - 3/8-16 Nylon Jam	1	
92	R32144-73	104-2065, 32144-73	Screw - Machine Hex Washer Head	2	
93	R110-1718	110-1718	Screw-HHF	1	
96	R415521	32-113-AHNC, 32137-1, 3246-2, 909862P	Screw - Set - 5/16-18 x 3/8	1	
97	R95-9619	95-9619	Key - Square 1/8 x 1/8 x 5/16	1	

All original equipment manufacturers names and part numbers are used for identification purposes only, and we are in no way implying that our products are original equipment parts. Prices subject to change without notice.



Replaces Toro Reelmaster 5610-D Parts

DPA Cutting Unit - Model 03638, 03639, 03641 & 03643

Left-Hand Groomer Kit - Model 03403



Item No	R&R Part No.	OEM Part No.	Description	Qty Req	Order Quantity
98	R3256-69	3256-69	Washer - Flat	2	
99	R33114-010	33114-010	Bolt - Hex HD M8-1.25 x 10	2	
99	R3234-1	321-11, 3234-1	Bolt - Flanged Serrated Hex HD 3/8-16 x 3/4	2	
99	R400120	01-150-0990, 01-178-0416, 02-150-0990, 321-11, 3222-4, 33114-010, 33114-060, 513327, 908470	Bolt - Hex HD 1/4-20 x 2	2	
100	R112-7451	100-9429, 112-7451	Bolt - Hex Tap 3/8-16 x 2-3/4	2	
101	R453009	01-166-0400, 24-10-BD, 24-9-AD, 32-9650, 3256-2, 3256-23, 3256-3, 3256-67, 3290-217, 3556-3, 4-2390, 7-0152	Washer - Flat 5/16 SAE	4	

All original equipment manufacturers names and part numbers are used for identification purposes only, and we are in no way implying that our products are original equipment parts. Prices subject to change without notice.



Replaces Toro Reelmaster 5610-D Parts

DPA Cutting Unit - Model 03638, 03639, 03641 & 03643

Left-Hand Groomer Kit - Model 03403



Item No	R&R Part No.	OEM Part No.	Description	Qty Req	Order Quantity
101	R453011	01-166-0100, 01-166-0120, 01-166-0270, 01-166-0500, 01-166-0600, 01-166-0620, 132-4593, 2356-3, 237-12, 24-10-AD, 24-11-AD, 24-11-BD, 24-12-AD, 24-12-BD, 30-9310, 32-8190, 3256-24, 3256-3, 3256-36, 3256-4, 453011, 47-9950, 48-9220, 513458, 7-0052	Washer - Flat 3/8 SAE Y/Zinc	4	
102	R32128-19	104-8301, 104-9301, 32128-19	Locknut - 3/8-16 Flanged Top Lock	4	
102	R104-8301	104-8301, 104-9301, 109-6658, 133-7570	Locknut - 3/8-16 Nylon Flanged	4	
103	R104-8300	104-8300, 104-8300 , 119-4041	Locknut - 5/16-18 Flanged Y/Zinc	4	
104	R322-16	322-16, Apr-00	Bolt - Hex HD 5/16-18 x 1-1/8	2	
105	R445722	30-8980, 32128-2, 32128-20, 32128-20	Nut - Serrated Washer	2	

All original equipment manufacturers names and part numbers are used for identification purposes only, and we are in no way implying that our products are original equipment parts. Prices subject to change without notice.



Replaces Toro Reelmaster 5610-D Parts

DPA Cutting Unit - Model 03638, 03639, 03641 & 03643

Left-Hand Groomer Kit - Model 03403



Item No	R&R Part No.	OEM Part No.	Description	Qty Req	Order Quantity
106	R3274-7	3247-7, 3274-7	Bolt - Soc HD Cap 3/8-16 x 1	4	
107	R32151-95	32151-90, 32151-95	Retaining Ring	1	
108	R108-4213	108-4213	Bracket- HOC - LH - Groomer	1	
109	R108-4214	108-4214	Bracket-HOC - RH - Groomer	1	

All original equipment manufacturers names and part numbers are used for identification purposes only, and we are in no way implying that our products are original equipment parts. Prices subject to change without notice.