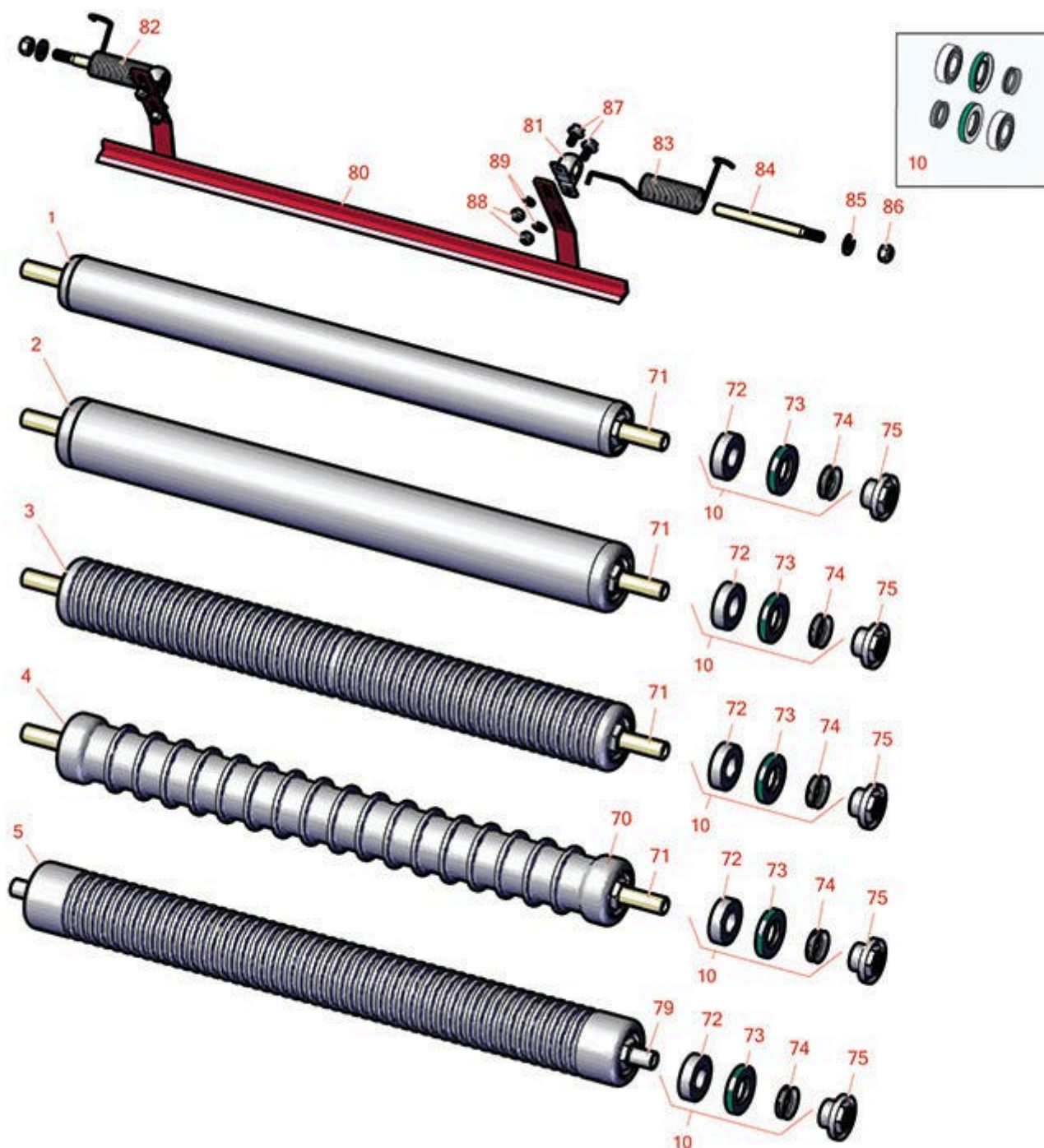




# Replaces Toro Greensmaster 3120 Parts

DPA Cutting Unit - Models 04652, 04654 & 04656

Rollers



All original equipment manufacturers names and part numbers are used for identification purposes only, and we are in no way implying that our products are original equipment parts. Prices subject to change without notice.



# Replaces Toro Greensmaster 3120 Parts

DPA Cutting Unit - Models 04652, 04654 & 04656  
Rollers



Item No	R&R Part No.	OEM Part No.	Description	Qty Req	Order Quantity
---------	--------------	--------------	-------------	---------	----------------

## Overhaul Kits

10	<b>R107-1594</b>	107-1594	Overhaul Kit - Roller	1	
----	------------------	----------	-----------------------	---	--

*Detail Description: Includes 2 ea.: R106-6941 Seals, R106-6942 V-Rings & R251-347 Bearings:*

## R&R Rear Rollers

1	<b>R140-5560</b>	105-5776, 106-6945, 107-3509, 119-4093, 120-9595, 140-5560	Roller - Smooth 2 in Steel Rear	1	
---	------------------	---	---------------------------------	---	--

2	<b>R115-7388</b>	115-7388, 140-5681	Roller - Smooth Tubular Steel 2-1/2 in Dia	1	
---	------------------	-----------------------	---	---	--

*Detail Description: Constructed with a through shaft, this steel roller uses a through shaft and ball bearings.:*

3	<b>R115-7360</b>	115-7360	Roller - Narrow Grooved Machined Aluminum - 2 1/2	1	
---	------------------	----------	--	---	--

*Detail Description: Constructed with a through shaft, this aluminum roller is machined with narrow grooves and uses ball bearings.:*

4	<b>R115-7386</b>	115-7386	Roller - Wide Grooved Machined Aluminum - 2-1/2 Dia	1	
---	------------------	----------	--	---	--

*Detail Description: Constructed with a through shaft, this aluminum roller is machined with 1-1/8" wide grooves for the least amount of ground contact and uses ball bearings.:*

5	<b>R121-4675</b>	121-4675	Roller - Extended Machined Grooved	1	
---	------------------	----------	---------------------------------------	---	--

## Other Parts Available

70	<b>R99-6216</b>	99-6216	Tube - Grooved - 1 1/8 Spacing	1	
----	-----------------	---------	--------------------------------	---	--

71	<b>R119-4090</b>	119-4090	Shaft - Roller - Hardened	1	
----	------------------	----------	---------------------------	---	--

72	<b>R251-347</b>	251-347, 72-5690	Bearing - Ball	2	
----	-----------------	---------------------	----------------	---	--

All original equipment manufacturers names and part numbers are used for identification purposes only, and we are in no way implying that our products are original equipment parts. Prices subject to change without notice.



## Replaces Toro Greensmaster 3120 Parts

DPA Cutting Unit - Models 04652, 04654 & 04656  
Rollers



Item No	R&R Part No.	OEM Part No.	Description	Qty Req	Order Quantity
73	<b>R106-6941</b>	106-6941	Seal - Double Lip	2	
74	<b>R106-6942</b>	106-6942	V-Ring - Roller	2	
75	<b>R114-3745</b>	106-6939, 108-3151, 114-3745, 114-5411	Locknut - Bearing - Stainless	2	
79	<b>R120-5404</b>	120-5404	Shaft- Roller	1	
80	<b>R106-9095-01</b>	106-9095-01	Scraper - Assy	3	
81	<b>R256-239</b>	256-239	Bearing	6	
82	<b>R106-9094</b>	106-9094	Spring - LH - SS	3	
83	<b>R106-9093</b>	106-9093	Spring - RH - SS	3	
84	<b>R106-9091</b>	106-9091	Pin - Scraper	6	
85	<b>R33094-00</b>	33094-00, 93-5914	Washer - Flat - 8mm Hardened	6	
86	<b>R33024-00</b>	33024-00	Locknut - 8mm x 1.25	6	
87	<b>R33113-016</b>	33113-016, 48-7620	Bolt - Hex Washer M6-1.0 x 12	12	
88	<b>R33023-00</b>	33023-00, 48-7900, 49-7810	Locknut - ESNA 6mm x 1.0	12	
89	<b>R6050-103</b>	48-8010, 48-8030	Washer - Flat	12	

All original equipment manufacturers names and part numbers are used for identification purposes only, and we are in no way implying that our products are original equipment parts. Prices subject to change without notice.