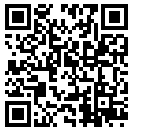
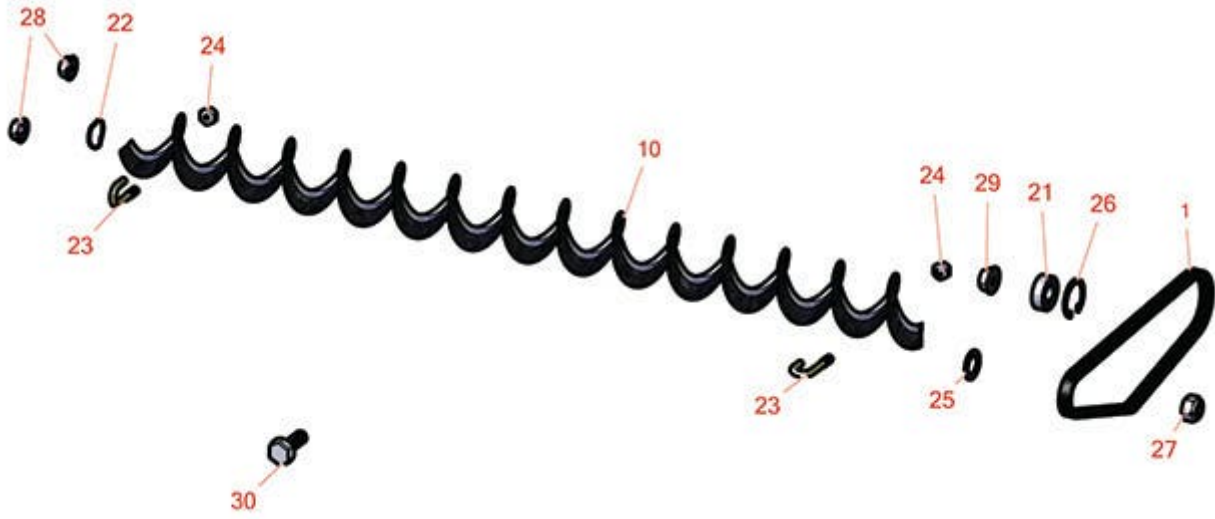




Replaces Toro Greensmaster 3150-Q Parts



DPA Cutting Unit - Models 04652, 04654 & 04656
Rear Roller Brush - Model 04650



All original equipment manufacturers names and part numbers are used for identification purposes only, and we are in no way implying that our products are original equipment parts. Prices subject to change without notice.



Replaces Toro Greensmaster 3150-Q Parts



DPA Cutting Unit - Models 04652, 04654 & 04656
Rear Roller Brush - Model 04650

Item No	R&R Part No.	OEM Part No.	Description	Qty Req	Order Quantity
Belts					
1	R105-5720	105-5720	Belt - Poly V	1	
Rollers					
10	R105-6792	104-1829, 105-6792	Brush - Rear Roller	1	
Other Parts Available					
21	R251-259	251-259, 251-307	Bearing - Ball	1	
22	R115-7143	115-7143	Spring - Wave	1	
23	R104-1830	104-1830	Bolt - J	2	
24	R3296-2	32127-10, 3296-2, 9157404	Nut - #10 Lock	2	
25	R112-6957	112-6957	Washer - Hardened	2	
26	R104-4727	104-4727	Ring - Retaining	1	
27	R121-4600	121-4600	Locknut - 3/8-16 Hx HD Jam Nylon Ins	1	
28	R32128-33	32128-33	Nut - 1/4-20 Flanged Serr	2	
28	R301504	2296-42, 301504, 32127-24, 32128-33, 32146-17, 3296-16, 3296-42, 3296-42, 915661P	Locknut - ESNA 1/4-20	2	
29	R104-8300	104-8300, 104-8300, 119-4041	Locknut - 5/16-18 Flanged Y/Zinc	5	

All original equipment manufacturers names and part numbers are used for identification purposes only, and we are in no way implying that our products are original equipment parts. Prices subject to change without notice.



Replaces Toro Greensmaster 3150-Q Parts



DPA Cutting Unit - Models 04652, 04654 & 04656
Rear Roller Brush - Model 04650

Item No	R&R Part No.	OEM Part No.	Description	Qty Req	Order Quantity
30	R3234-29	3234-17, 3234-29	Bolt - 5/16-18x1 Serr Hex	1	

All original equipment manufacturers names and part numbers are used for identification purposes only, and we are in no way implying that our products are original equipment parts. Prices subject to change without notice.