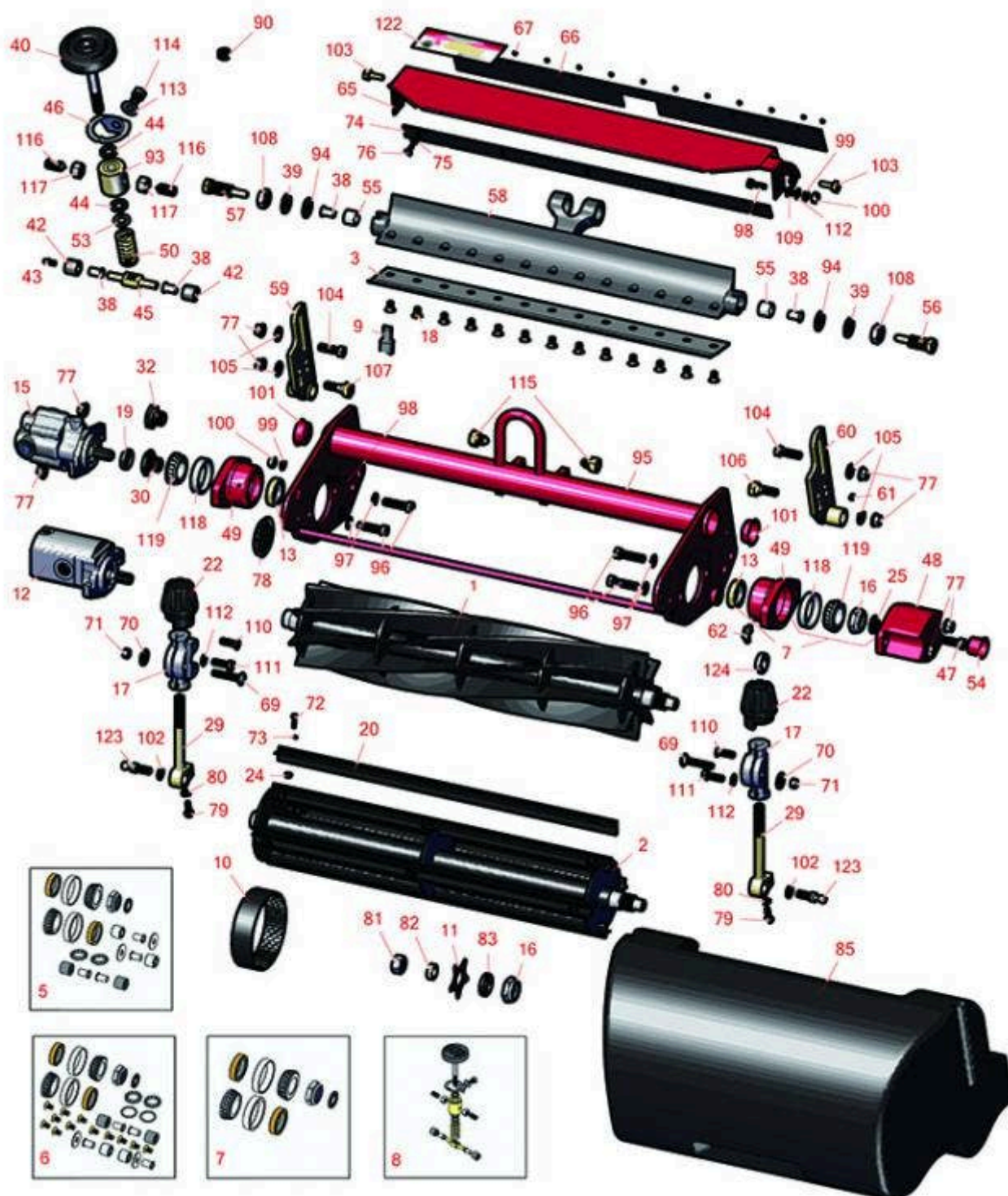




# Replaces Toro Greensmaster 3050 Parts

SPA Cutting Unit - Models 04460 & 04465

Reel & Bedknife



All original equipment manufacturers names and part numbers are used for identification purposes only, and we are in no way implying that our products are original equipment parts. Prices subject to change without notice.



## Replaces Toro Greensmaster 3050 Parts

SPA Cutting Unit - Models 04460 & 04465

Reel & Bedknife



Item No	R&R Part No.	OEM Part No.	Description	Qty Req	Order Quantity
---------	--------------	--------------	-------------	---------	----------------

### R&R Reels, Lifetime Guaranteed

1	<b>R150760</b>		Reel - 14 Blade	1	
---	----------------	--	-----------------	---	--

*Detail Description: R&R Reel blades are expertly crafted from premium high carbon-boron alloy steel, heat-treated to perfectly complement both R&R and OEM bedknives. Each reel undergoes precision cylindrical grinding on bearing surfaces, followed by relief grinding for optimal performance. Advanced computer balancing ensures extended reel and bearing life. Backed by our lifetime guarantee against defects in materials and craftsmanship under normal use, R&R Reels deliver unmatched durability and cutting precision you can trust.:*

1	<b>R12-2789</b>	12-2789, 130-6470	Reel - 11 Blade	1	
---	-----------------	----------------------	-----------------	---	--

*Detail Description: R&R Reel blades are manufactured from high carbon-boron alloy steel and then hardened to RC46-49 to match the temper of our bedknives and original equipment bedknives. All R&R Reels are cylindrically ground on bearing surfaces and then relief ground. Reels are then precision computer balanced for extended bearing and reel life. R&R Products Reels are guaranteed against defects in material and workmanship for the life of the reel under normal use.:*

1	<b>R5-3195</b>		Reel - 9 Blade	1	
---	----------------	--	----------------	---	--

*Detail Description: R&R Reel blades are expertly crafted from premium high carbon-boron alloy steel, heat-treated to perfectly complement both R&R and OEM bedknives. Each reel undergoes precision cylindrical grinding on bearing surfaces, followed by relief grinding for optimal performance. Advanced computer balancing ensures extended reel and bearing life. Backed by our lifetime guarantee against defects in materials and craftsmanship under normal use, R&R Reels deliver unmatched durability and cutting precision you can trust.:*

1	<b>R5-3189</b>	12-3599, 130-6469, 5-3189	Reel - 8 Blade	1	
---	----------------	---------------------------------	----------------	---	--

*Detail Description: R&R Reel blades are expertly crafted from premium high carbon-boron alloy steel, heat-treated to perfectly complement both R&R and OEM bedknives. Each reel undergoes precision cylindrical grinding on bearing surfaces, followed by relief grinding for optimal performance. Advanced computer balancing ensures extended reel and bearing life. Backed by our lifetime guarantee against defects in materials and craftsmanship under normal use, R&R Reels deliver unmatched durability and cutting precision you can trust.:*

1	<b>R5-3189H</b>		Reel - 8 Blade Heavy Duty	1	
---	-----------------	--	---------------------------	---	--

All original equipment manufacturers names and part numbers are used for identification purposes only, and we are in no way implying that our products are original equipment parts. Prices subject to change without notice.



## Replaces Toro Greensmaster 3050 Parts

SPA Cutting Unit - Models 04460 & 04465

Reel & Bedknife



Item No	R&R Part No.	OEM Part No.	Description	Qty Req	Order Quantity
<i>Detail Description: R&amp;R Reel blades are expertly crafted from premium high carbon-boron alloy steel, heat-treated to perfectly complement both R&amp;R and OEM bedknives. Each reel undergoes precision cylindrical grinding on bearing surfaces, followed by relief grinding for optimal performance. Advanced computer balancing ensures extended reel and bearing life. Backed by our lifetime guarantee against defects in materials and craftsmanship under normal use, R&amp;R Reels deliver unmatched durability and cutting precision you can trust.:</i>					
1	<b>R5-3206</b>		Reel - 6 Blade	1	
<i>Detail Description: R&amp;R Reel blades are expertly crafted from premium high carbon-boron alloy steel, heat-treated to perfectly complement both R&amp;R and OEM bedknives. Each reel undergoes precision cylindrical grinding on bearing surfaces, followed by relief grinding for optimal performance. Advanced computer balancing ensures extended reel and bearing life. Backed by our lifetime guarantee against defects in materials and craftsmanship under normal use, R&amp;R Reels deliver unmatched durability and cutting precision you can trust.:</i>					
1	<b>R5-3205</b>	12-0729	Reel - 5 Blade	1	
<i>Detail Description: R&amp;R Reel blades are expertly crafted from premium high carbon-boron alloy steel, heat-treated to perfectly complement both R&amp;R and OEM bedknives. Each reel undergoes precision cylindrical grinding on bearing surfaces, followed by relief grinding for optimal performance. Advanced computer balancing ensures extended reel and bearing life. Backed by our lifetime guarantee against defects in materials and craftsmanship under normal use, R&amp;R Reels deliver unmatched durability and cutting precision you can trust.:</i>					
1	<b>R5-3215</b>		Reel - 5 Blade Heavy Duty	1	
<i>Detail Description: R&amp;R Reel blades are expertly crafted from premium high carbon-boron alloy steel, heat-treated to perfectly complement both R&amp;R and OEM bedknives. Each reel undergoes precision cylindrical grinding on bearing surfaces, followed by relief grinding for optimal performance. Advanced computer balancing ensures extended reel and bearing life. Backed by our lifetime guarantee against defects in materials and craftsmanship under normal use, R&amp;R Reels deliver unmatched durability and cutting precision you can trust.:</i>					
1	<b>R5-3200</b>		Reel - 4 Blade	1	
<i>Detail Description: R&amp;R Reel blades are expertly crafted from premium high carbon-boron alloy steel, heat-treated to perfectly complement both R&amp;R and OEM bedknives. Each reel undergoes precision cylindrical grinding on bearing surfaces, followed by relief grinding for optimal performance. Advanced computer balancing ensures extended reel and bearing life. Backed by our lifetime guarantee against defects in materials and craftsmanship under normal use, R&amp;R Reels deliver unmatched durability and cutting precision you can trust.:</i>					
2	<b>R150480</b>		Brush Reel	1	

All original equipment manufacturers names and part numbers are used for identification purposes only, and we are in no way implying that our products are original equipment parts. Prices subject to change without notice.



# Replaces Toro Greensmaster 3050 Parts

SPA Cutting Unit - Models 04460 & 04465

Reel & Bedknife



Item No	R&R Part No.	OEM Part No.	Description	Qty Req	Order Quantity
---------	--------------	--------------	-------------	---------	----------------

***Detail Description:** R&R Products Brush Reels are an exciting concept in greens maintenance to clean sand and other debris left on grass surfaces after top dressing. If left on the turf, this sand and debris can cause dulling and excessive wear on mowing reels and bed knives. However, with the use of R&R Brush Reels, sand and debris are easily swept into conventional grass baskets. R&R Brush Reels are also used to stand turf up before mowing to give a cleaner, more uniform and truer putting surface. Designed with four replaceable brushes mounted in a metal frame, simply replace regular mowing reels with R&R Brush Reels and adjust bedknife to clear the brushes. The height of cut should be set to the top of the grass blades or slightly below. \*Remove bedknife for the removal of pine needles.<BR><BR>**SUGGESTED USAGE:** Verticutting - Dew Removal - Leaf Clean Up - Thatch Prevention Prior to Overseeding - Grooming before Mowing - Removal of Excessive Top Dressing:*

## R&R Bedknives, Lifetime Guaranteed

3	<b>R150466</b>	63-8600, 64-6393, 94-6393	Bedknife - Super Thick .312 - 1.00 HOC	1
---	----------------	---------------------------------	--	---

***Detail Description:** R&R Bedknives are manufactured from high carbon-boron alloy steel and then hardened to RC46-49 to match the temper of our reel blades and original equipment reels. Bedknives are surface ground on the top and front edge and straightened three times before being packaged with oil for rust prevention. All R&R Bedknives now have an increased front edge grind for added life. All R&R Bedknives are guaranteed against defects in material and workmanship under normal use for the life of the part.:*

3	<b>R94-6392</b>	62-2500, 94-6392	Bedknife - High Cut .312 - 1.00 HOC	1
---	-----------------	---------------------	-------------------------------------	---

***Detail Description:** R&R Bedknives are manufactured from high carbon-boron alloy steel and then hardened to RC46-49 to match the temper of our reel blades and original equipment reels. Bedknives are surface ground on the top and front edge and straightened three times before being packaged with oil for rust prevention. All R&R Bedknives now have an increased front edge grind for added life. All R&R Bedknives are guaranteed against defects in material and workmanship under normal use for the life of the part.:*

3	<b>R93-4264</b>	57-4960, 63-8470, 93-4264	Bedknife - Low Cut .187 - 1.00 HOC	1
---	-----------------	---------------------------------	------------------------------------	---

***Detail Description:** R&R Bedknives are manufactured from high carbon-boron alloy steel and then hardened to RC46-49 to match the temper of our reel blades and original equipment reels. Bedknives are surface ground on the top and front edge and straightened three times before being packaged with oil for rust prevention. All R&R Bedknives now have an increased front edge grind for added life. All R&R Bedknives are guaranteed against defects in material and workmanship under normal use for the life of the part.:*

All original equipment manufacturers names and part numbers are used for identification purposes only, and we are in no way implying that our products are original equipment parts. Prices subject to change without notice.





## Replaces Toro Greensmaster 3050 Parts

SPA Cutting Unit - Models 04460 & 04465

Reel & Bedknife



Item No	R&R Part No.	OEM Part No.	Description	Qty Req	Order Quantity
3	<b>R93-4263</b>	63-8560, 66-9320, 93-4263, 93-6039	Bedknife - Tournament Cut .125 - .500 HOC	1	

*Detail Description:* R&R Bedknives are manufactured from high carbon-boron alloy steel and then hardened to RC46-49 to match the temper of our reel blades and original equipment reels. Bedknives are surface ground on the top and front edge and straightened three times before being packaged with oil for rust prevention. All R&R Bedknives now have an increased front edge grind for added life. All R&R Bedknives are guaranteed against defects in material and workmanship under normal use for the life of the part.:

3	<b>R93-4262</b>	65-8250, 93-4262, 93-4263	Bedknife - Micro Cut .062 - .187 HOC	1	
---	-----------------	---------------------------------	---	---	--

*Detail Description:* R&R Bedknives are manufactured from high carbon-boron alloy steel and then hardened to RC46-49 to match the temper of our reel blades and original equipment reels. Bedknives are surface ground on the top and front edge and straightened three times before being packaged with oil for rust prevention. All R&R Bedknives now have an increased front edge grind for added life. All R&R Bedknives are guaranteed against defects in material and workmanship under normal use for the life of the part.:

3	<b>R94-6396</b>	10-4900, 54-9150, 94-6396, Oct-00	Bedknife - High Cut 5/16"-1" HOC	1	
---	-----------------	--	-------------------------------------	---	--

*Detail Description:* R&R Bedknives are manufactured from high carbon-boron alloy steel and then hardened to RC46-49 to match the temper of our reel blades and original equipment reels. Bedknives are surface ground on the top and front edge and straightened three times before being packaged with oil for rust prevention. All R&R Bedknives now have an increased front edge grind for added life. All R&R Bedknives are guaranteed against defects in material and workmanship under normal use for the life of the part.:

### R&R Razor Tool Steel Bedknives

3	<b>R115-1881</b>	115-1881	Bedknife - Razor Tool Steel - 21 Tournament Cut .125 - .500 HOC	1	
---	------------------	----------	---	---	--

All original equipment manufacturers names and part numbers are used for identification purposes only, and we are in no way implying that our products are original equipment parts. Prices subject to change without notice.



## Replaces Toro Greensmaster 3050 Parts

SPA Cutting Unit - Models 04460 & 04465

Reel & Bedknife



Item No	R&R Part No.	OEM Part No.	Description	Qty Req	Order Quantity
---------	--------------	--------------	-------------	---------	----------------

*Detail Description:* R&R Razor bedknives are manufactured from premium alloy tool steel steel and then hardened to RC48-51 to match the temper of our Razor reel blades and original equipment premium series reels. Bedknives are surface ground on the top and front edge and specially packaged for rust prevention. All R&R Bedknives now have an increased front edge grind for added life. All R&R Bedknives are guaranteed against defects in material and workmanship under normal use for the life of the part. You can expect up to double the life over standard bedknives.:

3	<b>R115-1880</b>	115-1880	Bedknife - Razor Tool Steel - 21 Micro Cut .062 - .187 HOC	1	
---	------------------	----------	---	---	--

*Detail Description:* R&R Razor bedknives are manufactured from premium alloy tool steel steel and then hardened to RC48-51 to match the temper of our Razor reel blades and original equipment premium series reels. Bedknives are surface ground on the top and front edge and specially packaged for rust prevention. All R&R Bedknives now have an increased front edge grind for added life. All R&R Bedknives are guaranteed against defects in material and workmanship under normal use for the life of the part. You can expect up to double the life over standard bedknives.:

### Overhaul Kits & Service Tools

5	<b>R255-310</b>		Overhaul Kit - Cutting Unit	0	
---	-----------------	--	-----------------------------	---	--

*Detail Description:* Includes 4 ea: R52-2890 Bushings; 2 ea: R237-77 O-Rings, R253-96 Seals, R254-72 Cups, R254-94 Bearings, R52-2900 Washers, R57-5280 Bearings, R62-5510 Bushings, R63-9510 Bushings; 1 ea: R253-61 Seal & R32127-46 Locknut:

6	<b>R13-3659</b>	13-3659	Overhaul Kit - Cutting Unit	0	
---	-----------------	---------	-----------------------------	---	--

*Detail Description:* Includes 13 ea.:R150477 Screws; 4 ea.: R52-2890 Bushings; 2 ea.: R237-77 O-rings, R253-96 Seals, R254-72 Bearing Cups, R254-94 Bearings, R52-2900 Washers, R57-5280 Bearings, R62-5510 Bushings, R63-9510 Bushings; 1 ea.: R253-61 Seal & R32127-46 Locknut:

7	<b>R107-1590</b>		Overhaul Kit - Cutting Unit	0	
---	------------------	--	-----------------------------	---	--

*Detail Description:* Includes 2 ea.: R253-96 Seals, R254-72 Bearing Cups, R254-94 Bearings; 1 ea.: R253-61 Seal & R32127-46 Locknut:

8	<b>R255-311</b>		Kit - Micro Adjusting	0	
---	-----------------	--	-----------------------	---	--

*Detail Description:* Includes 2 ea: R443818 Nut, R52-2890 Bushing, R57-5190 Screw, R62-5510 Bushing, R77-0350 Retainer; 1 ea: R187-0 Washer, R257-5 Washer, R52-2990 Bolt, R57-5260 Pivot, R66-7220 Arm, R66-7230 Spring, R77-0300 Handle, R77-0330 Housing:

9	<b>R51-0880</b>	51-0880	Bedknife Screw Driver Tool	0	
---	-----------------	---------	----------------------------	---	--

All original equipment manufacturers names and part numbers are used for identification purposes only, and we are in no way implying that our products are original equipment parts. Prices subject to change without notice.



## Replaces Toro Greensmaster 3050 Parts

SPA Cutting Unit - Models 04460 & 04465

Reel & Bedknife



Item No	R&R Part No.	OEM Part No.	Description	Qty Req	Order Quantity
---------	--------------	--------------	-------------	---------	----------------

*Detail Description: Easily install and remove bed knife screws with the help of a ratchet with 3/8" drive. Tool manufactured with hardened alloy steel.:*

### Belts

10	<b>R65-9700</b>	65-9700	Belt - Groomer	1	
----	-----------------	---------	----------------	---	--

### Rotary Blades

11	<b>R70-1170</b>	70-1170	Verti-Cut Blade - 2-3/8 w/7/8 Hex	41	
11	<b>R110-2393</b>	110-2393	Verti-Cut Blade - 2-3/8 w/7/8 Hex Carbide Tipped	41	

### Other Parts Available

12	<b>R120-2072</b>	100-6426, 108-6487, 112-9200, 120-2072, 93-1375	Hydraulic Gear Motor	1	
----	------------------	---	----------------------	---	--

*Tech Note: Fits Models 3150 & 3250-D:*

13	<b>R253-96</b>	253-96	Seal - Oil Single Lip Reel	2	
15	<b>R105-9770</b>	10-5090, 105-9770, 26-5690, 70-9800, 94-3506, 94-3507	Hydraulic Motor - Reel Quick Release	1	

*Tech Note: Fits Models 3000 & 3050:*

16	<b>R32127-46</b>	32127-46, 3296-60	Locknut	1	
17	<b>R10-5060</b>	10-5060	Bracket - Roller Adj	2	
17	<b>R65-9490</b>	65-9490	Bracket - HOC Fits Groomer	2	
18	<b>R150477</b>	57-4910	Screw - Bedknife 5/16-18 x 1/2	13	

All original equipment manufacturers names and part numbers are used for identification purposes only, and we are in no way implying that our products are original equipment parts. Prices subject to change without notice.



## Replaces Toro Greensmaster 3050 Parts

SPA Cutting Unit - Models 04460 & 04465

Reel & Bedknife



Item No	R&R Part No.	OEM Part No.	Description	Qty Req	Order Quantity
18	R150476	3-3816, 3-6462, 57-4910	Screw - Bedknife 5/16-18 x 5/8	13	
19	R353-585	353-585, 353-587, 354-34, 72-4380, 75-1210, 75-1270, 92-8863, 92-8864	Seal - High Pressure - Reel Motor	1	
20	R150481		Brush Assy - Brush Reel	4	
22	R65-8600	10-5040, 65-8600	Knob - Height Adjusting	2	
24	R3296-9	32127-17, 3296-9	Locknut - Comb	12	
25	R253-61	253-61	Seal - Oil Reel	1	
29	R10-5010	10-5010	Screw - Roller Adjustment	2	
29	R65-9500	65-9500	Screw - Roller Adjusting - High Cut	2	
30	R77-0560	77-0560	Nut - Splined Fits Groomer	1	
<i>Tech Note: Ser# 50001-69999:</i>					
31	R93-1394	93-1394	Nut - Splined RH Thrd .812 Long	1	
<i>Tech Note: Ser# 60001-69999:</i>					
38	R52-2890	52-2890	Bushing - Flanged	4	
39	R52-2900	52-2900	Washer - Nylon	2	
40	R77-0300	77-0300, 77-0300-01	Handle Assy	1	

All original equipment manufacturers names and part numbers are used for identification purposes only, and we are in no way implying that our products are original equipment parts. Prices subject to change without notice.





## Replaces Toro Greensmaster 3050 Parts

SPA Cutting Unit - Models 04460 & 04465

Reel & Bedknife



Item No	R&R Part No.	OEM Part No.	Description	Qty Req	Order Quantity
42	<b>R62-5510</b>	52-2870, 62-5510	Bushing	4	
43	<b>R302-18</b>	302-18	Zerk - Grease Press Style	2	
44	<b>R77-0350</b>	77-0350	Retainer - Bearing	2	
45	<b>R57-5260</b>	107-7409, 57-5260	Pivot - 1/2-20 - Bed Bar	1	
46	<b>R66-7220</b>	66-7220	Arm - Spring Handle Assy	1	
47	<b>R323-2</b>	01-178-0604, 323-2	Bolt - Hex HD 3/8-16 x 1	1	
48	<b>R10-5080</b>	10-5080, 10-5080-01	End - Cap Reel Brg Housing	1	
49	<b>R10-5120</b>	10-5120	Housing - Bearing Reel	2	
<i>Detail Description: Includes R253-96 &amp; R254-72:</i>					
50	<b>R66-7230</b>	66-7230	Spring - Compression	1	
53	<b>R257-5</b>	257-5	Washer - Thrust	2	
54	<b>R12-0460</b>	12-0460	Caplug - End Cap	1	
55	<b>R63-9510</b>	63-9480, 63-9510	Bushing - Rubber For Bed Bar	2	
56	<b>R52-2910</b>	52-2910	Bolt - Eccentric Bed Bar	1	
57	<b>R52-2930</b>	52-2930	Bolt - Bed Bar	1	
58	<b>R57-4940</b>	52-2780, 57-4940, 57-4940-01	Bed Bar - 13 Hole	1	
59	<b>R52-3060</b>	52-3060, 77-1060, 99-5653	Bracket - RH Rear Roller	1	

All original equipment manufacturers names and part numbers are used for identification purposes only, and we are in no way implying that our products are original equipment parts. Prices subject to change without notice.



## Replaces Toro Greensmaster 3050 Parts

SPA Cutting Unit - Models 04460 & 04465

Reel & Bedknife



Item No	R&R Part No.	OEM Part No.	Description	Qty Req	Order Quantity
60	R52-3090	52-3090, 77-1080, 99-5654	Bracket - LH Rear Roller	1	
61	R415521	32-113-AHNC, 32137-1, 3246-2, 909862P	Screw - Set - 5/16-18 x 3/8	2	
62	R302-40	302-13, 302-40	Fitting - Grease	1	
62	R700414	302-11, 302-19, 302-4, 32-8170	Zerk - Grease 1/4-28 45 Deg	2	
65	R57-5200	57-5200	Shield - Grass	1	
66	R57-5210	57-5210	Deflector - Styrene	1	
67	R3295-46	3295-46	Tube - Rivet Smi Grass Shield	13	
69	R441674	01-173-0514, 01-173-0516, 3-7253, 3230-5	Screw - 5/16-18 x 1-3/4 Carriage	2	
70	R310266	3256-23, 3256-3, 3556-3	Washer - Flat 5/16 USS	2	
70	R453009	01-166-0400, 24-10-BD, 24-9-AD, 32-9650, 3256-2, 3256-23, 3256-3, 3256-67, 3290-217, 3556-3, 4-2390, 7-0152	Washer - Flat 5/16 SAE	2	

All original equipment manufacturers names and part numbers are used for identification purposes only, and we are in no way implying that our products are original equipment parts. Prices subject to change without notice.



## Replaces Toro Greensmaster 3050 Parts

SPA Cutting Unit - Models 04460 & 04465

Reel & Bedknife



Item No	R&R Part No.	OEM Part No.	Description	Qty Req	Order Quantity
71	R32153-3	119-4038, 22-12-AJFD, 32127-35, 32146-5, 32153-3, 3296-18, 3296-29, 3296-31, N/A	Locknut - 5/16-18 ESNA Zinc	2	
71	R3296-29	1-804256, 3290-357, 3296-29, 915662P	Locknut - 5/16-18 ESNA	2	
71	R445795	30-4020, 32128-25	Nut - 5/16-18 Flanged	2	
72	R150425		Bolt - Hex HD 8-32 x 5/8	12	
73	R150426	3256-21	Washer - 8 SAE	12	
74	R36-7260	36-7260	Bar - Cut Off Grass Shield	1	
75	R3256-14	24-7-BD, 32125-2, 3256-14, 3256-51, 51-2170	Washer - 10 Flat	5	
76	R32144-73	104-2065, 32144-73	Screw - Machine Hex Washer Head	5	
77	R3296-39	32127-25, 32128-36, 3290-357, 3296-17, 3296-22, 3296-39, 915663P, 99-7443	Locknut - 3/8-16 Nylon	2	
78	R150485	2410-30	Cap - Protective Bearing Housing	1	

All original equipment manufacturers names and part numbers are used for identification purposes only, and we are in no way implying that our products are original equipment parts. Prices subject to change without notice.



## Replaces Toro Greensmaster 3050 Parts

SPA Cutting Unit - Models 04460 & 04465

Reel & Bedknife



Item No	R&R Part No.	OEM Part No.	Description	Qty Req	Order Quantity
79	R321-4	01-150-1030, 01-178-0406, 20-3-AGD, 321-4, 3222-1	Bolt - Hex HD 1/4-20 x 3/4	4	
80	R3253-3	01-166-0070, 01-166-0410, 23-9-GD, 24-7150, 3253-3, 3256-1, 352-167	Washer - Lock 1/4	4	
81	R3296-62	3296-62	Locknut - 1/2-20 LH Jam	1	
82	R251-327	251-327	Bearing - Groomer Reel	2	
83	R70-1350	70-1350	Spacer - 1/4 Fits Groomer Shaft	84	
85	R36-7250	22-7070, 36-7250, 37-8130, Oct-30	Grass Basket	3	
<i>Detail Description: &lt;BR&gt;Please note: Due to excessive air freight charges, this item will be shipped ground freight.:</i>					
90	R65-9940	65-9940	Spring	1	
93	R77-0330	77-0330	Housing - Pivot Spa	1	
94	R52-2860	119-4150, 52-2860	Washer - Bed Bar Pivot	1	
95	R70-1200	70-1200	Frame - Single Point Adj.	1	
96	R3290-316	3290-316, 57-3210	Bolt - Hex Tap 3/8-16 x 1-1/2	4	
97	R3255-9	3255-9	Washer - Lock 3/8 Ext. Star	4	
98	R321-5	321-31, 321-5	Bolt - Hex HD 1/4-20 x 7/8	2	

All original equipment manufacturers names and part numbers are used for identification purposes only, and we are in no way implying that our products are original equipment parts. Prices subject to change without notice.



## Replaces Toro Greensmaster 3050 Parts

SPA Cutting Unit - Models 04460 & 04465

Reel & Bedknife



Item No	R&R Part No.	OEM Part No.	Description	Qty Req	Order Quantity
99	R3256-22	24-9-BD, 3-1032, 3256-1, 3256-22, 93-0954, 93-0989	Washer - Flat 1/4 Yellow	4	
100	R301504	2296-42, 301504, 32127-24, 32128-33, 32146-17, 3296-16, 3296-42, 3296-42 , 915661P	Locknut - ESNA 1/4-20	2	
101	R285-14		Plug - Pipe Frame	2	
102	R3254-6	01-166-0010, 01-166-0280, 01-166-0610, 3253-5, 3254-18, 3254-6, 3290-223, 48-9370	Washer - Lock 3/8	2	
103	R57-9910	57-9910	Bolt - Pivot	2	
104	R400264	01-150-0180, 01-178-0610, 20-48-AD, 20-48-AGD, 32-9160, 3224-3, 323-29, 323-7, 400264, 908035P	Bolt - Hex HD 3/8-16 x 1-1/4	2	

All original equipment manufacturers names and part numbers are used for identification purposes only, and we are in no way implying that our products are original equipment parts. Prices subject to change without notice.





## Replaces Toro Greensmaster 3050 Parts

SPA Cutting Unit - Models 04460 & 04465

Reel & Bedknife



Item No	R&R Part No.	OEM Part No.	Description	Qty Req	Order Quantity
105	<b>R453011</b>	01-166-0100, 01-166-0120, 01-166-0270, 01-166-0500, 01-166-0600, 01-166-0620, 132-4593, 2356-3, 237-12, 24-10-AD, 24-11-AD, 24-11-BD, 24-12-AD, 24-12-BD, 30-9310, 32-8190, 3256-24, 3256-3, 3256-36, 3256-4, 453011, 47-9950, 48-9220, 513458, 7-0052	Washer - Flat 3/8 SAE Y/Zinc	4	
106	<b>R52-3100</b>	52-3100	Bolt - Eccentric Shoulder LH	1	
107	<b>R52-3110</b>	52-3110	Bolt - Shoulder HOC RH	1	
108	<b>R443828</b>	01-191-1018, 3214, 3220-6, 443828, 915089P	Nut - 5/8-18 Hex	2	
109	<b>R237-84</b>	237-84	Grommet - Rubber	2	
110	<b>R32108-20</b>	32108-20	Screw - Flat HD Cntrsunk	2	

All original equipment manufacturers names and part numbers are used for identification purposes only, and we are in no way implying that our products are original equipment parts. Prices subject to change without notice.



## Replaces Toro Greensmaster 3050 Parts

SPA Cutting Unit - Models 04460 & 04465

Reel & Bedknife



Item No	R&R Part No.	OEM Part No.	Description	Qty Req	Order Quantity
111	R322-5	01-178-0508, 20-26-AD, 20-26-AGD, 30-9000, 322-5, 513341, 519755, 908019P, N/A	Bolt - Hex HD 5/16-18 x 1	2	
112	R3255-8	3255-8	Washer - Lock 5/16 Ext	2	
112	R3253-4	01-166-0110, 01-166-0510, 23-10-GD, 24-7170, 30-8520, 3253-4, 48-9350, 48-9360, 48-9570, 68-9420, 99-7577	Washer - Lock 5/16 Zinc	0	
113	R187-0	3256-25, 7-0032	Washer - Flat 7/16 SAE	1	
114	R52-2990	324-25, 52-2990	Bolt - Spring Retainer	1	
115	R66-7240	66-7240	Bolt - Single Point Adjust.	2	
116	R57-5190	32110-19, 57-5190	Screw - Adjusting	2	
117	R443818	01-191-0813, 3218-18, 3218-5	Nut - 1/2-13 Hex Jam Zinc	2	

All original equipment manufacturers names and part numbers are used for identification purposes only, and we are in no way implying that our products are original equipment parts. Prices subject to change without notice.



## Replaces Toro Greensmaster 3050 Parts

SPA Cutting Unit - Models 04460 & 04465

Reel & Bedknife



Item No	R&R Part No.	OEM Part No.	Description	Qty Req	Order Quantity
118	R254-72	01-103-0050, 01-103-0120, 01-103-0140, 1-543508, 254-71, 254-72, 40439, 62-3340, 99-4511	Cup - Bearing	2	
119	R254-94	1-543509, 254-94, 32-8090, 32-8240, 32-9640, 40440, 62-3330	Tapered Bearing Cone	2	
122	R354083	104-7729, 354083	Decal - Danger	1	
123	R94-2958	94-2958	Stud - Alloy Ball Joint	2	
124	R251-328	251-328	Bearing - Groomer	2	

All original equipment manufacturers names and part numbers are used for identification purposes only, and we are in no way implying that our products are original equipment parts. Prices subject to change without notice.