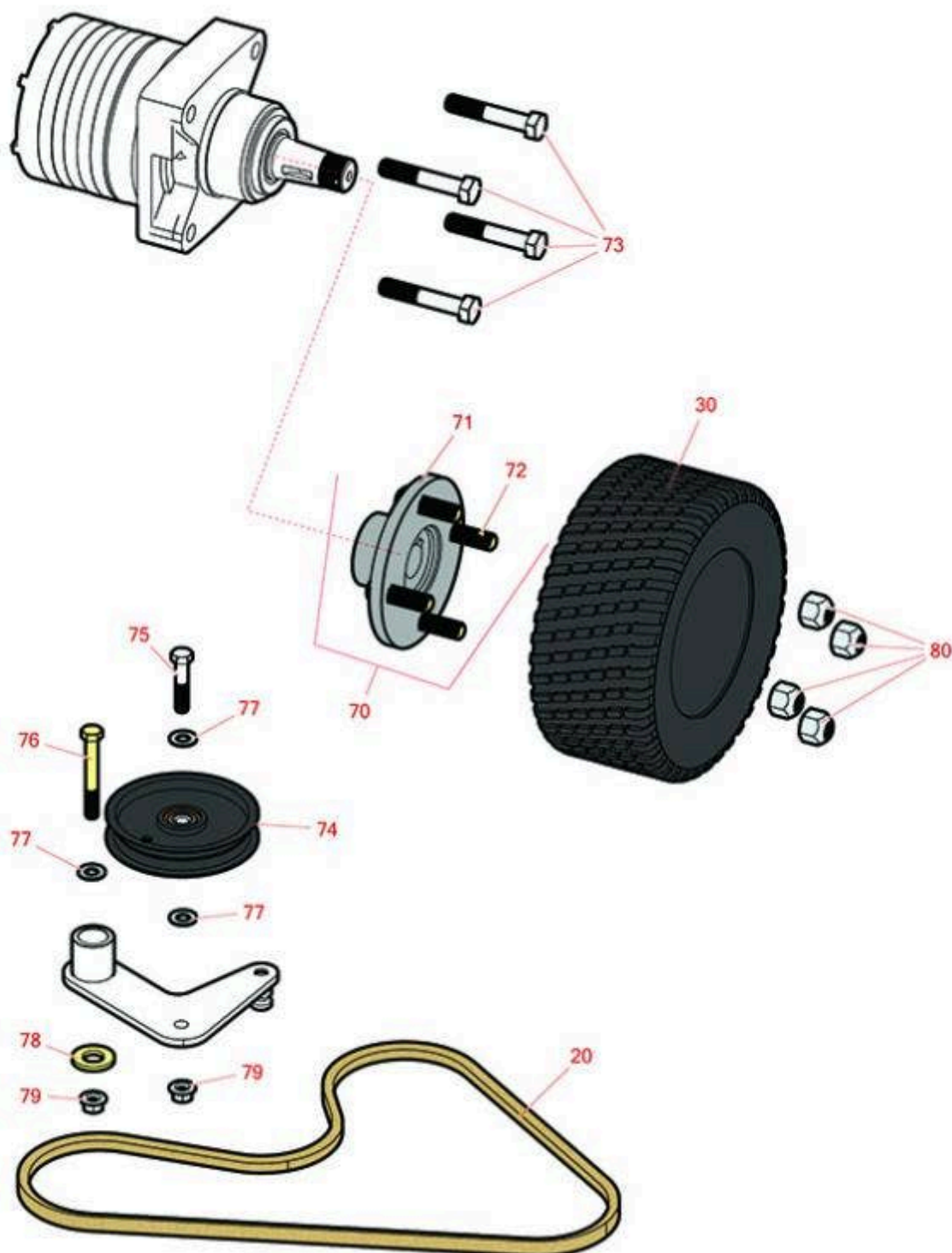




## Replaces Exmark Vantage X-Series Parts

Stand-On Mower with 48in Deck - Model VTX651GKA48400  
Ground Drive Assembly



All original equipment manufacturers names and part numbers are used for identification purposes only, and we are in no way implying that our products are original equipment parts. Prices subject to change without notice.



# Replaces Exmark Vantage X-Series Parts

Stand-On Mower with 48in Deck - Model VTX651GKA48400  
Ground Drive Assembly



| Item No                      | R&R Part No.          | OEM Part No.  | Description                                    | Qty Req | Order Quantity |
|------------------------------|-----------------------|---|--|---------|----------------|
| <b>Belts</b>                 |                       |   |  |         |                |
| 20                           | <b>R114567</b>        | 114567  | Belt- V - Lower Pto                            | 1       |                |
| <b>Tires</b>                 |                       |   |  |         |                |
| 30                           | <b>RTK20508-4TF-I</b> | 120-6466  | Tire - 20 x 10.50 - 8 (4 Ply) Kenda Super Turf | 2       |                |
| <b>Other Parts Available</b> |                       |   |  |         |                |
| 70                           | <b>R151377</b>        | 18-3209   | Hub Assy w/Studs - Wheel                       | 2       |                |
| 71                           | <b>R10-6870-03</b>    | 10-6870-03  | Hub - Wheel                                    | 2       |                |
| 72                           | <b>R10-6830</b>       | 10-6830   | Stud - 1/2-20 x 1 3/4                          | 8       |                |
| 73                           | <b>R325-11</b>        | 325-11,<br>325-9  | Bolt - Hex HD 1/2-13 x 2-3/4                   | 8       |                |
| 74                           | <b>R93-1622</b>       | 93-1622   | Idler Pulley - Flat 4 in Dia with .375 Bore    | 1       |                |
| 75                           | <b>R323-9</b>         | 323-9   | Bolt - Hex HD 3/8-16 x 1-3/4                   | 1       |                |
| 76                           | <b>R323-13</b>        | 323-13  | Bolt - Hex HD 3/8-16 x 2-3/4 GR5               | 1       |                |
| 77                           | <b>R453011</b>        | 3256-23,<br>3256-24,<br>3256-3,<br>3256-4,<br>48-9220,<br>80-7730 | Washer - Flat 3/8 SAE Y/Zinc                   | 3       |                |
| 78                           | <b>R1-373034</b>      | 1-373034  | Washer - 7/16 HD                               | 1       |                |
| 79                           | <b>R104-8301</b>      | 104-8301,<br>109-6658   | Locknut - 3/8-16 Nylon Flanged                 | 2       |                |
| 80                           | <b>R242-50</b>        | 242-50  | Nut - 1/2-20 Wheel                             | 8       |                |

All original equipment manufacturers names and part numbers are used for identification purposes only, and we are in no way implying that our products are original equipment parts. Prices subject to change without notice.