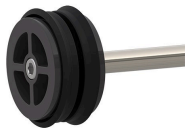




Hand Pump Pro - 10"

RG7140



Details

Quickly remove trapped water from large body sprinkler heads, valve boxes, clogged drains and low lying areas. Commercial grade PVC construction with a rigid anodized aluminum rod for durability. The suction piston is equipped with an O-ring seal and a threaded end cap making these pumps easy to disassemble, clean, then, reassemble. Includes 8" extension. Available in 10" pump chamber with 14 oz stroke or 20" pump chamber with 32 oz stroke.

- 10" Pump Chamber
- 14 oz. Stroke
- Thick PVC Construction w/ Anodized Aluminum Rod
- Disassembles for Easy Cleaning
- Interchangeable Attachments
- Includes 8" Extension

Replaces

R&R Products

RG7112

Specifications

Manufacturer

R&R Products

TURF Handels GmbH

Am Hartboden 48 Gratkorn, 8101

+43 3124 29064-17

<https://turf.rrproducts.com/>