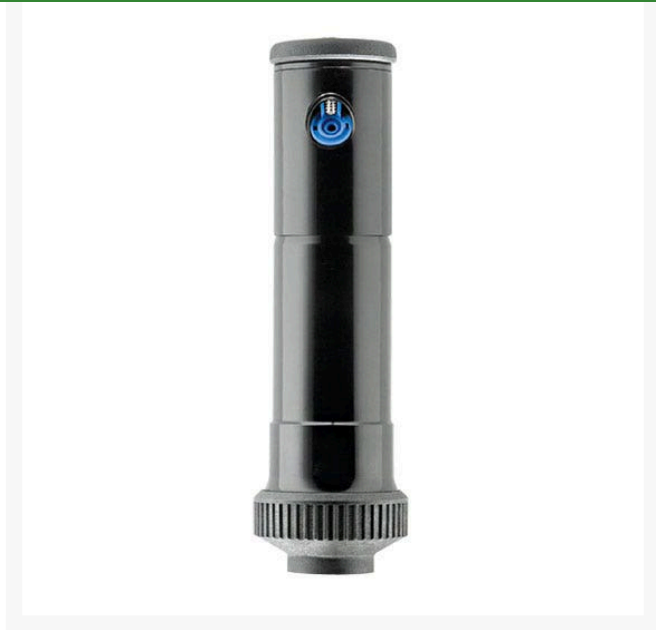




# 6000-PRO Shrub Head

RGW6001



## Details

-The 6000 Pro series rotors are constructed of high impact plastic and all internal metal parts are made of stainless steel. -3/4" (2 cm) inlet -No tools are required to adjust the arc from 40 - 360 degrees by using the easy to use Click-Set disc. -This series comes with 8 interchangeable nozzles with a discharge range between 1.0 - 9.5 gpm (0.23 - 2.16 m<sup>3</sup>/hr). There is also a low angle nozzle tree available. -All models come with a rubber protective cap and an optional vandal resistant retaining screw. -The built in slip clutch protects the gears and motor from damage when adjusting for a part circle. If the rotor is manually moved out of position it will automatically reset to the defined pattern. -NIR2 (Nozzle Insertion / Radius Reduction) eliminates the need to remove the cap while fine tuning the radius and inserting the nozzle. -6000 comes in many various styles: shrub head version, heavy duty stainless version, 12" (30,5 cm) high pop version, anti-drain valve (ADV) version and the standard version.

## Specifications

|                           |                      |
|---------------------------|----------------------|
| Manufacturer              | Weathermatic         |
| Body Height               | 7.5 in               |
| Cap Diameter              | 2.875 in             |
| Exposed Cap Diameter      | 1.875 in             |
| Inlet Size                | 3/4 in               |
| Maximum Pressure          | 75 psi               |
| Pop-up Height             | 4 in                 |
| Quick Coupling Valve      | Yellow locking cover |
| Cap Type                  |                      |
| Screen Mesh               | .045 sq in           |
| Spinkler Flow             | 1.0 - 9.5 gpm        |
| Spray Trajectory          | 25 degrees           |
| Sprinkler Operating Range | 20 - 65 psi          |

## TURF Handels GmbH

Am Hartboden 48 Gratkorn, 8101  
+43 3124 29064-17

<https://turf.rrproducts.com/>



# 6000-PRO Shrub Head

RGW6001



## Replacement Parts

|          |   |
|----------|---|
| RGW6095  | 6090 Low Angle 13 Degree Trajectory Nozzle For 6000 Series Only |
| RGW77576 | 6000 Pro Series 25 Degree Trajectory Nozzle Bag of 10           |