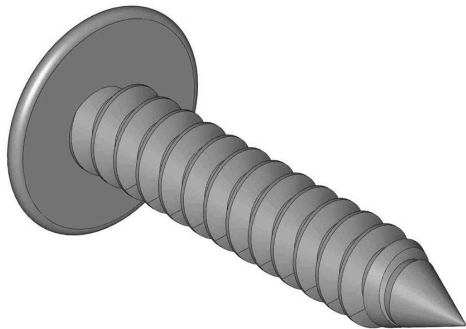




# Pem Screws - 1 in Stainless Steel w/Black Coating RPEM1150



## Details

Fasten PEM matting to wood surface with 1" stainless steel screws. Recommended screw count using 6" centers with screws around perimeter for a 2' x 25' roll = 108 screws, 3' x 25' roll = 112 screws, 6' x 25' roll = 124 screws. Available in stainless steel or stainless steel with black coating. Sold in box of 100.

## Specifications

Manufacturer	PEM
--------------	-----