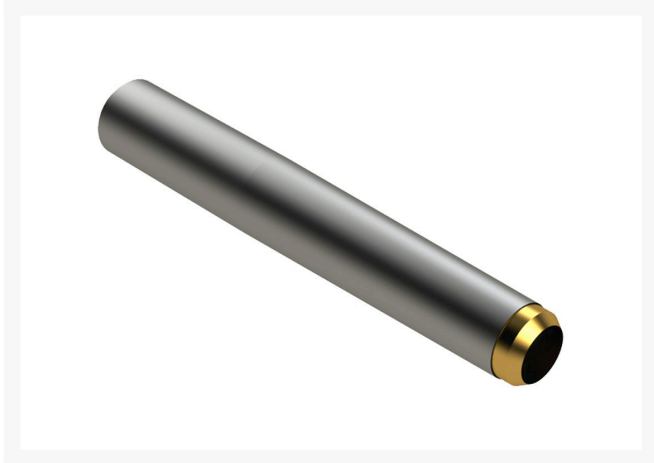




Alloy Hollow Tine with Carbide Tip - .750MT x 4.750L x .640OD R201405



Details

Carbide-Tipped Alloy Hollow Tine construction uses the same special high carbon alloy steel tubing and hardened to RC45-48 as the alloy hollow tines, with the addition of a carbide tip for even longer life. The advantage of using carbide-tipped tines is the ability to maintain your maximum aerating depth consistently over the life of the tines. You can expect these tines to last 6-8 times longer than the R&R Standard Hollow Tines. Carbide-tipped tines are not recommended in rocky soil conditions, as carbide, which is extremely wear resistant, can break when encountering hard impacts in rocks.

Specifications

Manufacturer	R&R Products
A - Tine Type	Alloy Hollow with Carbide Tip
B - Tine Mounting Dia.	.750 in (19mm)
C - Tine Length	4.75 in (121mm)
Carbide Tip	Carbide Tip
D - Tine Tip Outside (Hole) Dia.	.640 in (16.3mm)
E - Tine Tip Inside (Core) Dia.	.500 in (12.7mm)
F - Tine Wall Thickness	.049 in (1.2mm)

Fits Models

Toro Greens Aerator
Toro ProCore 1298
Toro ProCore 440
Toro ProCore 648
Toro ProCore 660
Toro ProCore 864
Toro ProCore 880
Toro ProCore 648s

TURF Handels GmbH

Am Hartboden 48 Gratkorn, 8101
+43 3124 29064-17

<https://turf.rrproducts.com/>