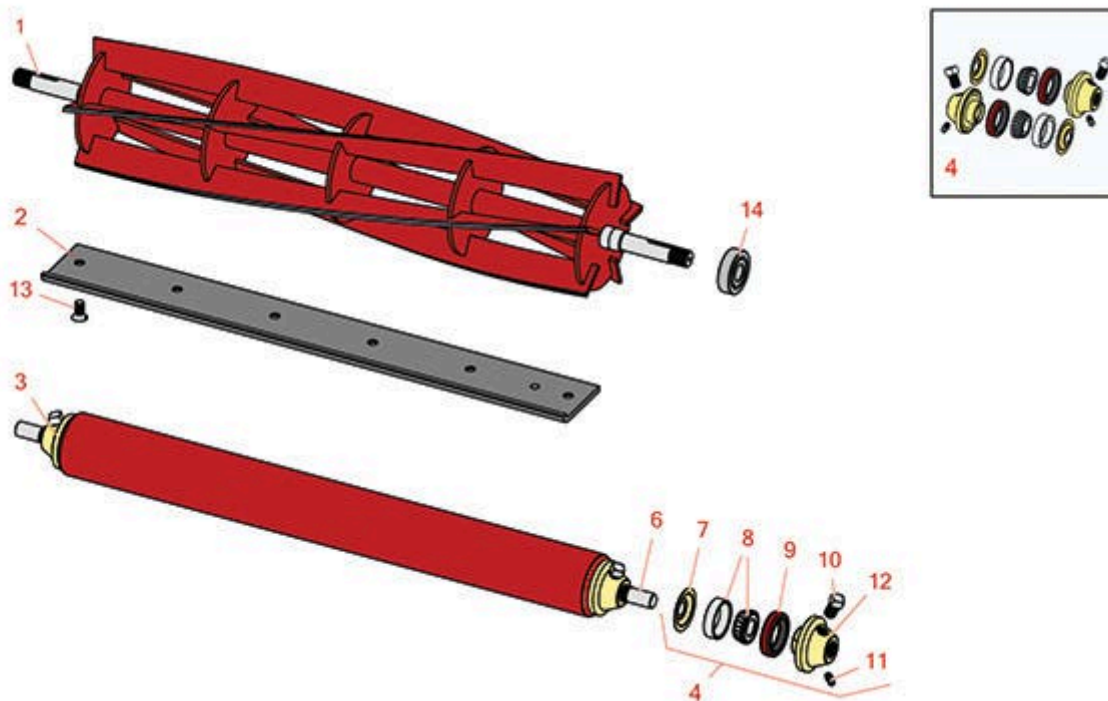




# Replaces Brouwer Triplex 376A Parts

Cutting Unit

Reel Bedknife & Roller



All original equipment manufacturers names and part numbers are used for identification purposes only, and we are in no way implying that our products are original equipment parts. Prices subject to change without notice.



# Replaces Brouwer Triplex 376A Parts

Cutting Unit

Reel, Bedknife & Roller



Item No	R&R Part No.	OEM Part No.	Description	Qty Req	Order Quantity
---------	--------------	--------------	-------------	---------	----------------

## R&R Reels, Lifetime Guaranteed

1	<b>R600210</b>	LMA0101-5	Reel - 5 Blade Wing Unit	2
---	----------------	-----------	--------------------------	---

*Detail Description: R&R Reel blades are expertly crafted from premium high carbon-boron alloy steel, heat-treated to perfectly complement both R&R and OEM bedknives. Each reel undergoes precision cylindrical grinding on bearing surfaces, followed by relief grinding for optimal performance. Advanced computer balancing ensures extended reel and bearing life. Backed by our lifetime guarantee against defects in materials and craftsmanship under normal use, R&R Reels deliver unmatched durability and cutting precision you can trust.:*

1	<b>R600211</b>	LMA0201-5	Reel - 5 Blade Rear Unit	1
---	----------------	-----------	--------------------------	---

*Detail Description: R&R Reel blades are expertly crafted from premium high carbon-boron alloy steel, heat-treated to perfectly complement both R&R and OEM bedknives. Each reel undergoes precision cylindrical grinding on bearing surfaces, followed by relief grinding for optimal performance. Advanced computer balancing ensures extended reel and bearing life. Backed by our lifetime guarantee against defects in materials and craftsmanship under normal use, R&R Reels deliver unmatched durability and cutting precision you can trust.:*

1	<b>R600212</b>	LMA0101-7	Reel - 7 Blade	2
---	----------------	-----------	----------------	---

*Detail Description: R&R Reel blades are expertly crafted from premium high carbon-boron alloy steel, heat-treated to perfectly complement both R&R and OEM bedknives. Each reel undergoes precision cylindrical grinding on bearing surfaces, followed by relief grinding for optimal performance. Advanced computer balancing ensures extended reel and bearing life. Backed by our lifetime guarantee against defects in materials and craftsmanship under normal use, R&R Reels deliver unmatched durability and cutting precision you can trust.:*

1	<b>R600213</b>	LMA0201-7	Reel - 7 Blade - Rear Unit	1
---	----------------	-----------	----------------------------	---

*Detail Description: R&R Reel blades are expertly crafted from premium high carbon-boron alloy steel, heat-treated to perfectly complement both R&R and OEM bedknives. Each reel undergoes precision cylindrical grinding on bearing surfaces, followed by relief grinding for optimal performance. Advanced computer balancing ensures extended reel and bearing life. Backed by our lifetime guarantee against defects in materials and craftsmanship under normal use, R&R Reels deliver unmatched durability and cutting precision you can trust.:*

## R&R Bedknives, Lifetime Guaranteed

2	<b>RLMA0103</b>	LMA0103	Bedknife - Wing Units	2
---	-----------------	---------	-----------------------	---

All original equipment manufacturers names and part numbers are used for identification purposes only, and we are in no way implying that our products are original equipment parts. Prices subject to change without notice.



# Replaces Brouwer Triplex 376A Parts

Cutting Unit

Reel, Bedknife & Roller



Item No	R&R Part No.	OEM Part No.	Description	Qty Req	Order Quantity
---------	--------------	--------------	-------------	---------	----------------

*Detail Description: R&R Bedknives are manufactured from high carbon-boron alloy steel and then hardened to RC46-49 to match the temper of our reel blades and original equipment reels. Bedknives are surface ground on the top and front edge and straightened three times before being packaged with oil for rust prevention. All R&R Bedknives now have an increased front edge grind for added life. All R&R Bedknives are guaranteed against defects in material and workmanship under normal use for the life of the part.:*

2	<b>RLMA0203</b>	LMA0203	Bedknife - Rear Unit	1	
---	-----------------	---------	----------------------	---	--

*Detail Description: R&R Bedknives are manufactured from high carbon-boron alloy steel and then hardened to RC46-49 to match the temper of our reel blades and original equipment reels. Bedknives are surface ground on the top and front edge and straightened three times before being packaged with oil for rust prevention. All R&R Bedknives now have an increased front edge grind for added life. All R&R Bedknives are guaranteed against defects in material and workmanship under normal use for the life of the part.:*

## R&R Rollers

3	<b>R600200</b>	LMAX1028	Roller - Front	2	
---	----------------	----------	----------------	---	--

*Detail Description: with tapered Roller Bearings:*

3	<b>R600205</b>	LMAX1035	Roller - Rear	1	
---	----------------	----------	---------------	---	--

*Detail Description: with tapered Roller Bearings:*

## Overhaul Kits

4	<b>R700505</b>		Conversion Kit - Roller	0	
---	----------------	--	-------------------------	---	--

*Detail Description: Includes: 2 each: R254-78 Bearing Cones, R254-79 Bearing Cups, R328062 Seals, R412063 Square Head Set Screws, R700501 Roller Ends & R700502 Grease Retainers.:*

## Other Parts Available

6	<b>R600202</b>		Shaft - Roller Fits Front Units	2	
---	----------------	--	---------------------------------	---	--

6	<b>R600207</b>		Shaft - Roller - Rear Roller	1	
---	----------------	--	------------------------------	---	--

7	<b>R700502</b>		Retainer - Grease	2	
---	----------------	--	-------------------	---	--

8	<b>R500534</b>		Bearing - with Cup	2	
---	----------------	--	--------------------	---	--

*Detail Description: Kit includes: 1 ea R254-78- Bearing Cone & R254-79 Bearing Cone:*

9	<b>R328062</b>		Seal - Roller	2	
---	----------------	--	---------------	---	--

All original equipment manufacturers names and part numbers are used for identification purposes only, and we are in no way implying that our products are original equipment parts. Prices subject to change without notice.



## Replaces Brouwer Triplex 376A Parts

*Cutting Unit*

*Reel, Bedknife & Roller*



Item No	R&R Part No.	OEM Part No.	Description	Qty Req	Order Quantity
10	<b>R412063</b>		Screw - Sq. HD. Set	2	
11	<b>R302-5</b>	M0004	Fitting - Grease	2	
12	<b>R700501</b>		Roller End - Regreasable	2	
13	<b>RLM0104</b>	LMA0104	Screw - Bedknife -Metric	7	
14	<b>RB2031</b>	B2031	Bearing - Reel	6	

All original equipment manufacturers names and part numbers are used for identification purposes only, and we are in no way implying that our products are original equipment parts. Prices subject to change without notice.