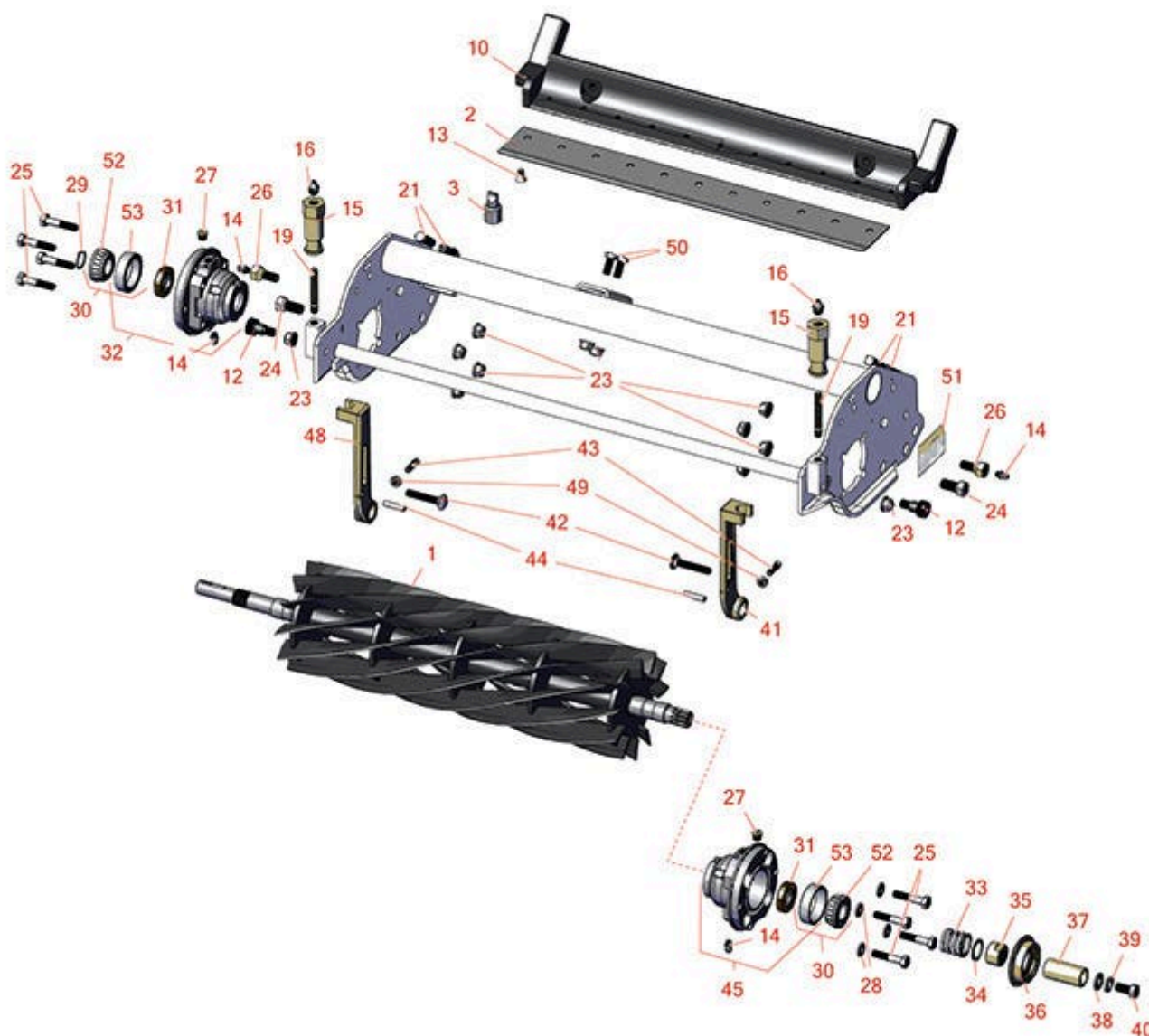




# Replaces Jacobsen Eclipse 118F Parts

*Floating Head Cutting Unit  
Reel & Bedknife*



All original equipment manufacturers names and part numbers are used for identification purposes only, and we are in no way implying that our products are original equipment parts. Prices subject to change without notice.



# Replaces Jacobsen Eclipse 118F Parts

Floating Head Cutting Unit  
Reel & Bedknife



Item No	R&R Part No.	OEM Part No.	Description	Qty Req	Order Quantity
---------	--------------	--------------	-------------	---------	----------------

## R&R Reels, Lifetime Guaranteed

1	<b>R4170220</b>	4170220	Reel - 11 Blade 18 in	1
---	-----------------	---------	-----------------------	---

*Detail Description: R&R Reel blades are expertly crafted from premium high carbon-boron alloy steel, heat-treated to perfectly complement both R&R and OEM bedknives. Each reel undergoes precision cylindrical grinding on bearing surfaces, followed by relief grinding for optimal performance. Advanced computer balancing ensures extended reel and bearing life. Backed by our lifetime guarantee against defects in materials and craftsmanship under normal use, R&R Reels deliver unmatched durability and cutting precision you can trust.:*

## R&R Bedknives, Lifetime Guaranteed

2	<b>R5000098</b>	5000098	Bedknife - Low Cut 18 in	1
---	-----------------	---------	--------------------------	---

*Detail Description: R&R Bedknives are manufactured from high carbon-boron alloy steel and then hardened to RC46-49 to match the temper of our reel blades and original equipment reels. Bedknives are surface ground on the top and front edge and straightened three times before being packaged with oil for rust prevention. All R&R Bedknives now have an increased front edge grind for added life. All R&R Bedknives are guaranteed against defects in material and workmanship under normal use for the life of the part.:*

2	<b>R5002888</b>	5001056, 5002888	Bedknife - Tournament 18" - .082- .109	1
---	-----------------	---------------------	---	---

*Detail Description: R&R Bedknives are manufactured from high carbon-boron alloy steel and then hardened to RC46-49 to match the temper of our reel blades and original equipment reels. Bedknives are surface ground on the top and front edge and straightened three times before being packaged with oil for rust prevention. All R&R Bedknives now have an increased front edge grind for added life. All R&R Bedknives are guaranteed against defects in material and workmanship under normal use for the life of the part.:*

## Service Tools

3	<b>R101272T</b>		Bedknife Screw Driver Tool	0
---	-----------------	--	----------------------------	---

*Tech Note: Easily install and remove bed knife screws with the help of a ratchet. Tool manufactured with hardened alloy steel.:*

*Detail Description: Easily install and remove bed knife screws with the help of a ratchet. Tool manufactured with hardened alloy steel.:*

## Other Parts Available

10	<b>R2811055</b>	2811055	Bed Bar	1
----	-----------------	---------	---------	---

All original equipment manufacturers names and part numbers are used for identification purposes only, and we are in no way implying that our products are original equipment parts. Prices subject to change without notice.



# Replaces Jacobsen Eclipse 118F Parts

Floating Head Cutting Unit  
Reel & Bedknife



Item No	R&R Part No.	OEM Part No.	Description	Qty Req	Order Quantity
12	R365246	365246	Bolt - Shoulder w/Nyloc Patch	2	
13	R101272	101272, 3009138, 402578, 800813	Screw - Bedknife 1/4-20 x 1/2	13	
14	R302-5	302-5, 471214, 471223, 471226	Fitting - Grease	1	
15	R365009	3005692, 365009, 365170, 441674	Knob - Adjusting Roller	2	
16	R471219	366852, 471219	Zerk - Grease	2	
19	R343616	343616, 443102	Stud	2	
21	R412506	412503, 412506	Screw - Bed Bar Adjusting	4	
23	R445795	445795	Nut - 5/16-18 Flanged	8	
24	R315298	315298	Bolt - Bed Bar	2	
25	R400192	400192	Bolt - Hex HD 5/16-18 x 1-1/2	8	
26	R1002224	1002224	Bolt - Rear Roller 3/8-24	2	
<i>Detail Description: Incl Grease Zerk:</i>					
27	R170714	170714, 471240, 471242	Fitting - Pressure Relief	1	
28	R453009	3256-23, 452004, 452006, 452008, 453009	Washer - Flat 5/16 SAE	4	

All original equipment manufacturers names and part numbers are used for identification purposes only, and we are in no way implying that our products are original equipment parts. Prices subject to change without notice.



# Replaces Jacobsen Eclipse 118F Parts

Floating Head Cutting Unit  
Reel & Bedknife



Item No	R&R Part No.	OEM Part No.	Description	Qty Req	Order Quantity
29	<b>R458013</b>	458013	Ring - Retaining	1	
30	<b>R500534</b>	500534, R500534	Bearing - with Cup	1	
<i>Detail Description: Kit includes: 1 ea R254-78- Bearing Cone &amp; R254-79 Bearing Cone:</i>					
31	<b>R336962</b>	336962	Seal	1	
32	<b>R1004756</b>	1004756	Housing - Bearing Drive End	1	
<i>Detail Description: Includes: R336962 Seal, R170714 Fitting, R302-5 Zerk &amp; R254-79 Cup:</i>					
33	<b>R5002151</b>	5002151	Hardware Kit - Spring/Washer	1	
<i>Detail Description: Includes 1 ea: R304745 Washer, R363047 Spring:</i>					
34	<b>R304745</b>	304745	Washer - Reel	1	
35	<b>R364900</b>	364900	Nut - Reel Tension	1	
36	<b>R163398</b>	163398, 163892	Seal - Spacer Assy	1	
37	<b>R367164</b>	367164	Spacer - Reel	1	
38	<b>R453011</b>	453011	Washer - Flat 3/8 SAE Y/Zinc	1	
39	<b>R3254-6</b>	3254-6, 446140, 446142	Washer - Lock 3/8	1	
40	<b>R400294</b>	400294	Screw - 3/8 24 x 3/4 Hex C/Zinc	1	
41	<b>R153979</b>	153979, 3008439	Bracket - Front Roller	1	
42	<b>R441674</b>	441674	Screw - 5/16-18 x 1-3/4 Carriage	2	
43	<b>R352737</b>	352737	Screw - Set 1/4 x 7/8 Sq Head	2	
44	<b>R461256</b>	461256	Pin - 1/4 x 1	1	

All original equipment manufacturers names and part numbers are used for identification purposes only, and we are in no way implying that our products are original equipment parts. Prices subject to change without notice.



## Replaces Jacobsen Eclipse 118F Parts

Floating Head Cutting Unit  
Reel & Bedknife



Item No	R&R Part No.	OEM Part No.	Description	Qty Req	Order Quantity
45	<b>R164144</b>	1000480, 163397, 164144, 2000060	Housing - Reel Bearing	1	
<i>Detail Description: Includes R336962 Seal, R302-5 Zerk, R170714 Relief Fitting &amp; R254-79 Cup:</i>					
48	<b>R153980</b>	153980, 3008438	Bracket - Front Roller	1	
49	<b>R443102</b>	443102	Nut - 1/4-20 Yellow Zinc	4	
50	<b>R400184</b>	400184, 400194	Screw - 5/16-18 x 3/4 Hex	2	
51	<b>R1000997</b>	1000997	Decal - Warning	1	
52	<b>R254-78</b>	254-78, 385174, 4121174, 4135152	Tapered Bearing Cone	2	
53	<b>R254-79</b>	254-79, 4121175	Cup - Bearing	2	

*Detail Description: Use R254-79M installation mandrel to properly install race.:*

All original equipment manufacturers names and part numbers are used for identification purposes only, and we are in no way implying that our products are original equipment parts. Prices subject to change without notice.