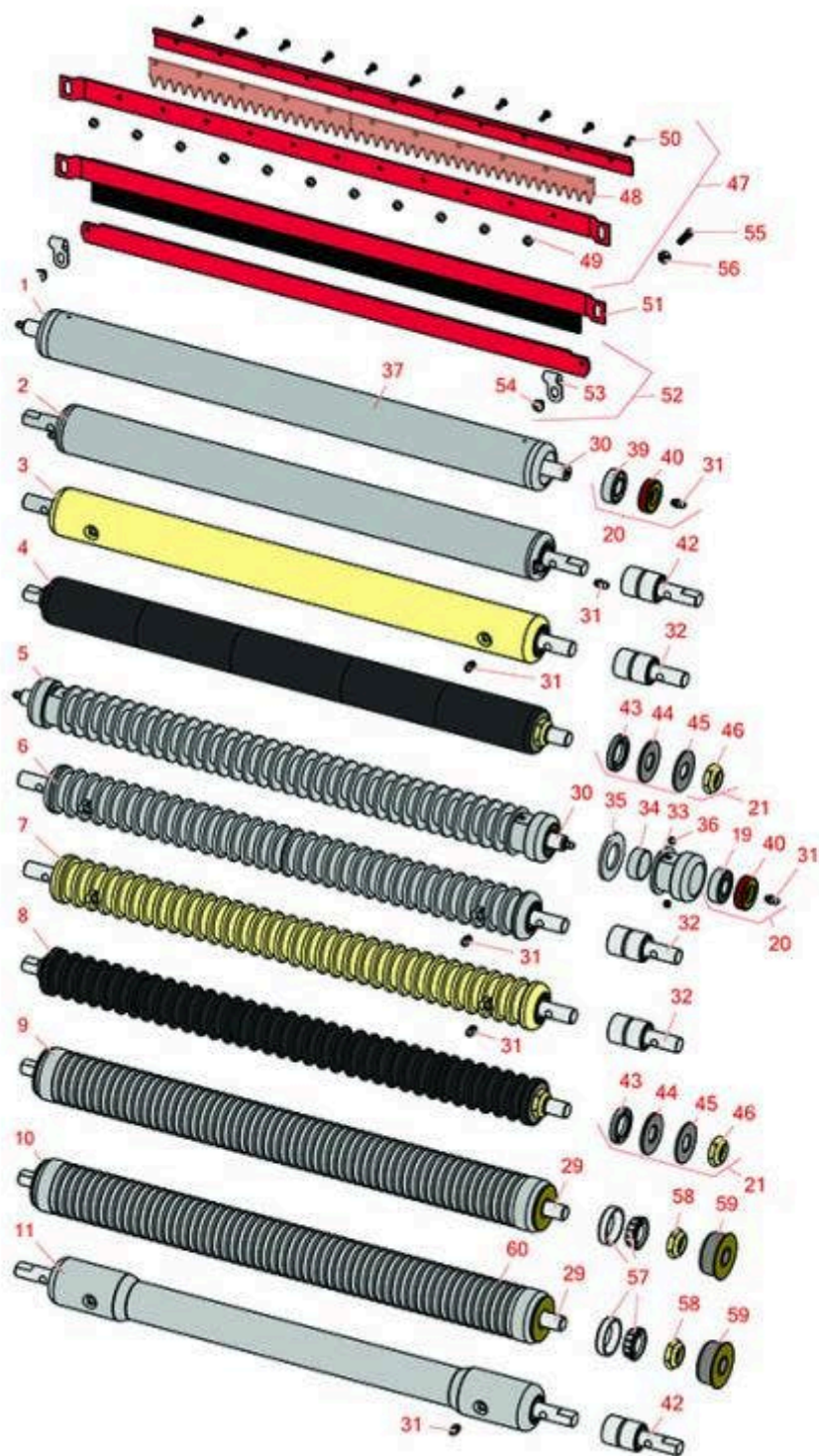




# Replaces Jacobsen E-Plex Parts

Cutting Unit  
Front Rollers



All original equipment manufacturers names and part numbers are used for identification purposes only, and we are in no way implying that our products are original equipment parts. Prices subject to change without notice.



# Replaces Jacobsen E-Plex Parts

Cutting Unit  
Front Rollers



Item No	R&R Part No.	OEM Part No.	Description	Qty Req	Order Quantity
---------	--------------	--------------	-------------	---------	----------------

## R&R Front Rollers

1	<b>R158776</b>	158776, 162917	Roller - Smooth Tubular Steel	1	
<i>Detail Description: Constructed with a through shaft and greasable ball bearings.:</i>					
2	<b>R52-3120</b>		Roller - Smooth Tubular Steel	1	
<i>Detail Description: Constructed with "water-pump" style bearings.:</i>					
3	<b>R101126</b>		Roller - Smooth Solid Steel	1	
<i>Detail Description: Machined from solid steel, this heavy weight roller uses greasable "water-pump" style bearings.:</i>					
4	<b>R101336</b>		Roller - Smooth UHMW Polyethylene	1	
<i>Detail Description: Machined from solid UHMW, this low maintenance roller uses a 1" solid stainless steel shaft and requires no grease. UHMW material prevents build-up of debris.:</i>					
5	<b>R68527R</b>		Roller - Grooved Repairable Steel	1	
<i>Detail Description: Constructed with a through shaft and greasable ball bearings, this roller can be repaired by unscrewing the ends and replacing the series of washers and spacers.:</i>					
6	<b>R101123</b>		Roller - Grooved Machined Solid Aluminum	1	
<i>Detail Description: Machined from solid aluminum, this lightweight roller uses greasable "water-pump" style bearings.:</i>					
7	<b>R68577</b>	68577	Roller - Grooved Machined Solid Steel	1	
<i>Detail Description: Machined from solid steel, this heavyweight roller uses greasable "water-pump" style bearings.:</i>					
8	<b>R101330</b>		Roller - Grooved UHMW Polyethylene	1	
<i>Detail Description: Machined from solid UHMW, this low maintenance roller rotates around a 1" solid stainless steel shaft and requires no bearings or grease. Patented groove design and smooth UHMW material prevents build-up of debris.:</i>					
9	<b>R68613</b>	68613	Roller - Grooved Repairable Steel	1	

All original equipment manufacturers names and part numbers are used for identification purposes only, and we are in no way implying that our products are original equipment parts. Prices subject to change without notice.



# Replaces Jacobsen E-Plex Parts

Cutting Unit  
Front Rollers



Item No	R&R Part No.	OEM Part No.	Description	Qty Req	Order Quantity
---------	--------------	--------------	-------------	---------	----------------

*Detail Description: Machined from heavy wall steel tubing and a through shaft with greasable tapered bearings.:*

10	<b>R68614</b>	68614	Roller - Grooved Machined Aluminum	1	
----	---------------	-------	------------------------------------	---	--

*Detail Description: Machined from aluminum tubing and a through shaft with tapered bearings.:*

11	<b>R101122</b>		Roller - Swaged Machined Aluminum	1	
----	----------------	--	-----------------------------------	---	--

*Detail Description: Constructed with "water-pump" style bearings, this steel tubular roller contacts the ground only on the outer 2-7/8" of the roller.:*

## Overhaul Kits

20	<b>R100130</b>	100130	Overhaul Kit - Roller	1	
----	----------------	--------	-----------------------	---	--

*Detail Description: Includes 2 ea.: R302-5 Grease Fittings, R303558 Bearings, & R305115 Seals:*

21	<b>R101395</b>	100139, 101395	Overhaul Kit - UHMW Roller	1	
----	----------------	-------------------	----------------------------	---	--

*Detail Description: Fits all R&R 2" Dia. Black UHMW Polyethylene Rollers. Includes 10 ea.: R150322 Roll Pins; 2 ea.: R3296-15 Locknuts, R150347T Teflon Seals, R150333 Thrust Washers, & R150334A Bronze Thrust Washers:*

## Other Parts Available

29	<b>R3009725</b>	3009725	Shaft - Roller	1	
----	-----------------	---------	----------------	---	--

30	<b>R102030</b>	102030	Shaft - Front Roller	1	
----	----------------	--------	----------------------	---	--

31	<b>R302-5</b>	302-5, 471214, 471223, 471226	Fitting - Grease	2	
----	---------------	----------------------------------------	------------------	---	--

32	<b>R101481</b>	101481, 311839	Bearing - Roller	2	
----	----------------	-------------------	------------------	---	--

*Detail Description: Fits R&R Machined Grooved Roller & Smooth (19 lbs) Roller:*

33	<b>R150650</b>		Roller End - 2 Repairable	2	
----	----------------	--	---------------------------	---	--

34	<b>R150651</b>		Spacer - 2-3/8 Roller	34	
----	----------------	--	-----------------------	----	--

All original equipment manufacturers names and part numbers are used for identification purposes only, and we are in no way implying that our products are original equipment parts. Prices subject to change without notice.



## Replaces Jacobsen E-Plex Parts

Cutting Unit  
Front Rollers



Item No	R&R Part No.	OEM Part No.	Description	Qty Req	Order Quantity
35	R150652	150652, 325262	Washer - 2 Roller	33	
36	R150690	150690, 415509	Screw - Set 1/4-20 x 1/4	4	
37	R129594	131426	Tube - Assy Rear/Front Roller	1	
39	R303558	303558	Bearing - Roller	2	
40	R305115	305115	Seal - Roller	2	
42	R21-8430		Bearing - Roller	2	
43	R150347T		Seal - Nonstick Lip	2	
44	R150334A		Washer - Thrust SAE660 Bronze	2	
45	R150333		Washer - Flat Keyed Outer SS	2	
46	R3296-15	3296-15, 367029, 444742	Locknut - 3/4-16 Nylon Jam	2	
47	R129914		Comb - Assy	1	
48	R8-2530		Comb - Urethane	1	
49	R3296-9S		Nut - Hex Comb	11	
50	R3249-3		Screw - Comb	11	
51	R129913	129913	Brush Assy	1	
52	R102024	102024	Scraper - Solid Roller	1	
53	R303159	303159	Clip - Roller Scraper	2	
54	R407586	407586	Screw - 1/4-20 x 1/4 Pan HD	2	
55	R352737	352737	Screw - Set 1/4 x 7/8 Sq Head	2	
56	R443102	443102	Nut - 1/4-20 Yellow Zinc	4	

All original equipment manufacturers names and part numbers are used for identification purposes only, and we are in no way implying that our products are original equipment parts. Prices subject to change without notice.



# Replaces Jacobsen E-Plex Parts

Cutting Unit  
Front Rollers



Item No	R&R Part No.	OEM Part No.	Description	Qty Req	Order Quantity
57	R503378	503378	Bearing - with Cup	2	
59	R3010210	3010210	Seal - Roller	2	
60	R3000394	3000394	Tube - Aluminum Grooved Roller	1	

All original equipment manufacturers names and part numbers are used for identification purposes only, and we are in no way implying that our products are original equipment parts. Prices subject to change without notice.