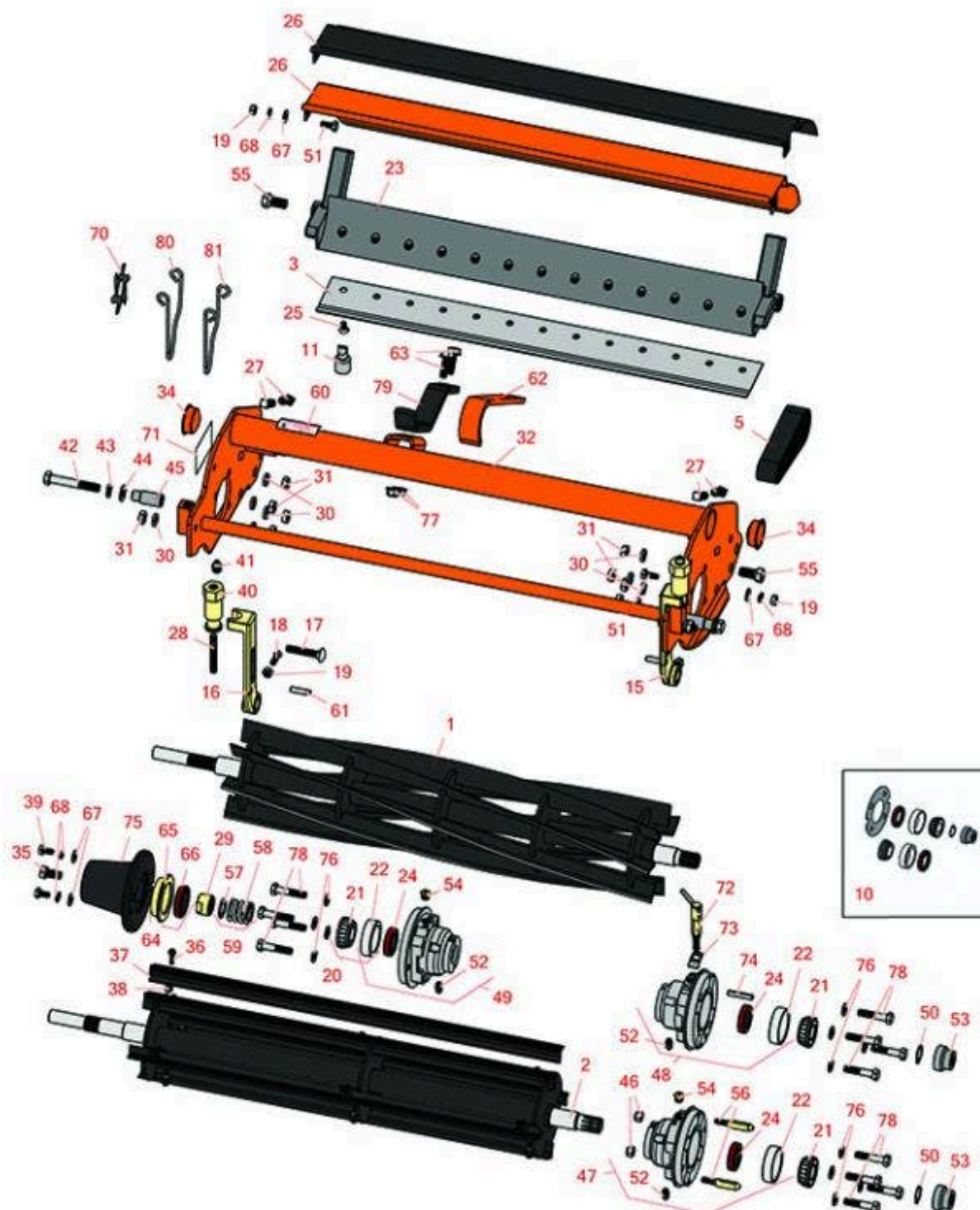




# Replaces Jacobsen Greens King V & VI

## Parts

Cutting Unit  
Reel & Bedknife



All original equipment manufacturers names and part numbers are used for identification purposes only, and we are in no way implying that our products are original equipment parts. Prices subject to change without notice.



# Replaces Jacobsen Greens King V & VI

## Parts

Cutting Unit

Reel & Bedknife



Item No	R&R Part No.	OEM Part No.	Description	Qty Req	Order Quantity
---------	--------------	--------------	-------------	---------	----------------

### R&R Reels, Lifetime Guaranteed

1	<b>R503320</b>	5001096, 5003054, 5003064, 503320	Reel - 7 Blade RH	1	
---	----------------	--	-------------------	---	--

*Detail Description: R&R Reel blades are expertly crafted from premium high carbon-boron alloy steel, heat-treated to perfectly complement both R&R and OEM bedknives. Each reel undergoes precision cylindrical grinding on bearing surfaces, followed by relief grinding for optimal performance. Advanced computer balancing ensures extended reel and bearing life. Backed by our lifetime guarantee against defects in materials and craftsmanship under normal use, R&R Reels deliver unmatched durability and cutting precision you can trust.:*

1	<b>R503376</b>	5001100, 503376	Reel - 9 Blade RH	1	
---	----------------	--------------------	-------------------	---	--

*Detail Description: R&R Reel blades are expertly crafted from premium high carbon-boron alloy steel, heat-treated to perfectly complement both R&R and OEM bedknives. Each reel undergoes precision cylindrical grinding on bearing surfaces, followed by relief grinding for optimal performance. Advanced computer balancing ensures extended reel and bearing life. Backed by our lifetime guarantee against defects in materials and craftsmanship under normal use, R&R Reels deliver unmatched durability and cutting precision you can trust.:*

1	<b>R506635</b>	5000029, 5001102	Reel - 11 Blade RH	1	
---	----------------	---------------------	--------------------	---	--

*Detail Description: R&R Reel blades are expertly crafted from premium high carbon-boron alloy steel, heat-treated to perfectly complement both R&R and OEM bedknives. Each reel undergoes precision cylindrical grinding on bearing surfaces, followed by relief grinding for optimal performance. Advanced computer balancing ensures extended reel and bearing life. Backed by our lifetime guarantee against defects in materials and craftsmanship under normal use, R&R Reels deliver unmatched durability and cutting precision you can trust.:*

2	<b>R101490</b>		Brush Reel - RH	1	
---	----------------	--	-----------------	---	--

All original equipment manufacturers names and part numbers are used for identification purposes only, and we are in no way implying that our products are original equipment parts. Prices subject to change without notice.



# Replaces Jacobsen Greens King V & VI

## Parts

Cutting Unit

Reel & Bedknife



Item No	R&R Part No.	OEM Part No.	Description	Qty Req	Order Quantity
---------	--------------	--------------	-------------	---------	----------------

*Detail Description:* R&R Products Brush Reels are an exciting concept in greens maintenance to clean sand and other debris left on grass surfaces after top dressing. If left on the turf, this sand and debris can cause dulling and excessive wear on mowing reels and bed knives. However, with the use of R&R Brush Reels, sand and debris are easily swept into conventional grass baskets. R&R Brush Reels are also used to stand turf up before mowing to give a cleaner, more uniform and truer putting surface. Designed with four replaceable brushes mounted in a metal frame, simply replace regular mowing reels with R&R Brush Reels and adjust bedknife to clear the brushes. The height of cut should be set to the top of the grass blades or slightly below. \*Remove bedknife for the removal of pine needles.<BR><BR>**SUGGESTED USAGE:** Verticutting - Dew Removal - Leaf Clean Up - Thatch Prevention Prior to Overseeding - Grooming before Mowing - Removal of Excessive Top Dressing:

### R&R Bedknives, Lifetime Guaranteed

3	<b>R5002887</b>	5002887	Bedknife - Micro Cut - .082-.109	1
---	-----------------	---------	----------------------------------	---

*Detail Description:* R&R Bedknives are manufactured from high carbon-boron alloy steel and then hardened to RC46-49 to match the temper of our reel blades and original equipment reels. Bedknives are surface ground on the top and front edge and straightened three times before being packaged with oil for rust prevention. All R&R Bedknives now have an increased front edge grind for added life. All R&R Bedknives are guaranteed against defects in material and workmanship under normal use for the life of the part.:

3	<b>R4234900</b>	5000927	Bedknife - Tournament .063-.110	1
---	-----------------	---------	---------------------------------	---

*Detail Description:* R&R Bedknives are manufactured from high carbon-boron alloy steel and then hardened to RC46-49 to match the temper of our reel blades and original equipment reels. Bedknives are surface ground on the top and front edge and straightened three times before being packaged with oil for rust prevention. All R&R Bedknives now have an increased front edge grind for added life. All R&R Bedknives are guaranteed against defects in material and workmanship under normal use for the life of the part.:

3	<b>R503479</b>	503029, 503479	Bedknife - Tournament .094-.156 HOC	1
---	----------------	-------------------	--	---

*Detail Description:* R&R Bedknives are manufactured from high carbon-boron alloy steel and then hardened to RC46-49 to match the temper of our reel blades and original equipment reels. Bedknives are surface ground on the top and front edge and straightened three times before being packaged with oil for rust prevention. All R&R Bedknives now have an increased front edge grind for added life. All R&R Bedknives are guaranteed against defects in material and workmanship under normal use for the life of the part.:

3	<b>R503478</b>	101260, 503028, 503478, 549504	Bedknife - Thin .125-.219 HOC	1
---	----------------	---	-------------------------------	---

All original equipment manufacturers names and part numbers are used for identification purposes only, and we are in no way implying that our products are original equipment parts. Prices subject to change without notice.



# Replaces Jacobsen Greens King V & VI

## Parts

Cutting Unit

Reel & Bedknife



Item No	R&R Part No.	OEM Part No.	Description	Qty Req	Order Quantity
---------	--------------	--------------	-------------	---------	----------------

*Detail Description: R&R Bedknives are manufactured from high carbon-boron alloy steel and then hardened to RC46-49 to match the temper of our reel blades and original equipment reels. Bedknives are surface ground on the top and front edge and straightened three times before being packaged with oil for rust prevention. All R&R Bedknives now have an increased front edge grind for added life. All R&R Bedknives are guaranteed against defects in material and workmanship under normal use for the life of the part.:*

3	<b>R503477</b>	101261, 503027, 503477, 549397	Bedknife - Thick .156-.438 HOC	1	
---	----------------	---	--------------------------------	---	--

*Detail Description: R&R Bedknives are manufactured from high carbon-boron alloy steel and then hardened to RC46-49 to match the temper of our reel blades and original equipment reels. Bedknives are surface ground on the top and front edge and straightened three times before being packaged with oil for rust prevention. All R&R Bedknives now have an increased front edge grind for added life. All R&R Bedknives are guaranteed against defects in material and workmanship under normal use for the life of the part.:*

3	<b>R101262</b>		Bedknife - Super Thick 5/16	1	
---	----------------	--	-----------------------------	---	--

*Detail Description: R&R Bedknives are manufactured from high carbon-boron alloy steel and then hardened to RC46-49 to match the temper of our reel blades and original equipment reels. Bedknives are surface ground on the top and front edge and straightened three times before being packaged with oil for rust prevention. All R&R Bedknives now have an increased front edge grind for added life. All R&R Bedknives are guaranteed against defects in material and workmanship under normal use for the life of the part.:*

3	<b>R503460</b>	503257, 503460	Bedknife - 22 in 13 Hole	1	
---	----------------	-------------------	--------------------------	---	--

*Detail Description: R&R Bedknives are manufactured from high carbon-boron alloy steel and then hardened to RC46-49 to match the temper of our reel blades and original equipment reels. Bedknives are surface ground on the top and front edge and straightened three times before being packaged with oil for rust prevention. All R&R Bedknives now have an increased front edge grind for added life. All R&R Bedknives are guaranteed against defects in material and workmanship under normal use for the life of the part.:*

### R&R Razor Tool Steel Bedknives, Lifetime Guaranteed

3	<b>R101520</b>		Bedknife - Razor Tool Steel - 22 Micro Cut	1	
---	----------------	--	--	---	--

All original equipment manufacturers names and part numbers are used for identification purposes only, and we are in no way implying that our products are original equipment parts. Prices subject to change without notice.



# Replaces Jacobsen Greens King V & VI

## Parts

Cutting Unit

Reel & Bedknife



Item No	R&R Part No.	OEM Part No.	Description	Qty Req	Order Quantity
---------	--------------	--------------	-------------	---------	----------------

*Detail Description: R&R Razor bedknives are manufactured from premium alloy tool steel steel and then hardened to RC48-51 to match the temper of our Razor reel blades and original equipment premium series reels. Bedknives are surface ground on the top and front edge and specially packaged for rust prevention. All R&R Bedknives now have an increased front edge grind for added life. All R&R Bedknives are guaranteed against defects in material and workmanship under normal use for the life of the part. You can expect up to double the life over standard bedknives.:*

3	<b>R101521</b>		Bedknife - Razor Tool Steel - 22 Tournament Cut	1	
---	----------------	--	--	---	--

*Detail Description: R&R Razor bedknives are manufactured from premium alloy tool steel steel and then hardened to RC48-51 to match the temper of our Razor reel blades and original equipment premium series reels. Bedknives are surface ground on the top and front edge and specially packaged for rust prevention. All R&R Bedknives now have an increased front edge grind for added life. All R&R Bedknives are guaranteed against defects in material and workmanship under normal use for the life of the part. You can expect up to double the life over standard bedknives.:*

### Belts

5	<b>R365235</b>	365235	Belt - Timing Fits 2-1/2 Groomers	2	
---	----------------	--------	-----------------------------------	---	--

### Overhaul Kits & Service Tools

10	<b>R100125</b>		Overhaul Kit - Cutting Unit	0	
----	----------------	--	-----------------------------	---	--

*Detail Description: Includes 2 ea.: R336962 Seals, R254-78 Bearings, R254-79 Cups; 1 ea.:R337677 Seal, R458013 Ring, R364901Gasket, R337370 Coupling:*

11	<b>R101272T</b>		Bedknife Screw Driver Tool	0	
----	-----------------	--	----------------------------	---	--

*Tech Note: Easily install and remove bed knife screws with the help of a ratchet. Tool manufactured with hardened alloy steel.:*

*Detail Description: Easily install and remove bed knife screws with the help of a ratchet. Tool manufactured with hardened alloy steel.:*

### Other Parts Available

15	<b>R153979</b>	153979, 3008439	Bracket - Front Roller	1	
15	<b>R163231</b>	163231	Bracket - Extra Long - Front Roller	1	

All original equipment manufacturers names and part numbers are used for identification purposes only, and we are in no way implying that our products are original equipment parts. Prices subject to change without notice.





# Replaces Jacobsen Greens King V & VI

## Parts

Cutting Unit  
Reel & Bedknife



Item No	R&R Part No.	OEM Part No.	Description	Qty Req	Order Quantity
16	R153980	153980, 3008438	Bracket - Front Roller	1	
16	R163232	163232	Bracket - Extra Long - Front Roller	1	
17	R441674	441674	Screw - 5/16-18 x 1-3/4 Carriage	2	
18	R352737	352737	Screw - Set 1/4 x 7/8 Sq Head	2	
19	R443102	443102	Nut - 1/4-20 Yellow Zinc	2	
20	R500534	500534, R500534	Bearing - with Cup	2	
<i>Detail Description: Kit includes: 1 ea R254-78- Bearing Cone &amp; R254-79 Bearing Cone:</i>					
21	R254-78	254-78, 385174, 4121174, 4135152	Tapered Bearing Cone	2	
22	R254-79	254-79, 4121175	Cup - Bearing	2	
<i>Detail Description: Use R254-79M installation mandrel to properly install race.:</i>					
23	R220278	121856, 220278, 5000415	Backing Bar - Cast	1	
24	R336962	336962	Seal	2	
25	R101272	101272, 3009138, 402578, 800813	Screw - Bedknife 1/4-20 x 1/2	13	
26	R390950	126724, 2810043, 390950	Shield - Grass	1	
26	R2810043	2810043	Shield - Grass	1	

All original equipment manufacturers names and part numbers are used for identification purposes only, and we are in no way implying that our products are original equipment parts. Prices subject to change without notice.



# Replaces Jacobsen Greens King V & VI

## Parts

*Cutting Unit  
Reel & Bedknife*



Item No	R&R Part No.	OEM Part No.	Description	Qty Req	Order Quantity
27	<b>R412506</b>	412503, 412506	Screw - Bed Bar Adjusting	4	
28	<b>R343616</b>	343616, 443102	Stud	2	
29	<b>R364900</b>	364900	Nut - Reel Tension	1	
30	<b>R446136</b>	446134, 446136	Washer - Lock 5/16 Zinc	10	
31	<b>R443106</b>	443106	Nut - 5/16-18 Y/Zinc Plated	10	
32	<b>R122685</b>	119245, 122685, 503325	Frame	1	
32	<b>R5002577</b>	5002577	Frame - Reel	1	
34	<b>R285-14</b>		Plug - Pipe Frame	2	
35	<b>R400294</b>	400294	Screw - 3/8 24 x 3/4 Hex C/Zinc	1	
36	<b>R150425</b>	150425	Bolt - Hex HD 8-32 x 5/8	12	
37	<b>R150481</b>	150481	Brush Assy - Brush Reel	4	
38	<b>R3296-9</b>		Locknut - Comb	12	
39	<b>R321-5</b>	321-5, 400110	Bolt - Hex HD 1/4-20 x 7/8	2	
40	<b>R365009</b>	3005692, 365009, 365170, 441674	Knob - Adjusting Roller	2	
41	<b>R471219</b>	366852, 471219	Zerk - Grease	2	
42	<b>R101526</b>	101526	Bolt - Hex HD 3/8-16 x 2-1/2 GR5	2	

All original equipment manufacturers names and part numbers are used for identification purposes only, and we are in no way implying that our products are original equipment parts. Prices subject to change without notice.



# Replaces Jacobsen Greens King V & VI

## Parts

Cutting Unit  
Reel & Bedknife



Item No	R&R Part No.	OEM Part No.	Description	Qty Req	Order Quantity
43	R3254-6	3254-6, 446140, 446142	Washer - Lock 3/8	2	
44	R453011	453011	Washer - Flat 3/8 SAE Y/Zinc	2	
45	R101525	101525	Spacer - Mower Mounting Assy	2	
46	R32152-4	32152-4, 444708	Locknut - 1/4-20 All Metal	2	
47	R1004786	1004786	Housing - Bearing Quick Clip	1	
<i>Detail Description: Includes: R336962, R302-5, R254-79, R3010296, R32152-4 &amp; R170714:</i>					
48	R1002564	1002564	Housing - Bearing Motor End	1	
<i>Detail Description: Includes: R336962, R1002607, R302-5, R254-79, R461397 &amp; R3005841:</i>					
49	R164144	1000480, 163397, 164144, 2000060	Housing - Reel Bearing	1	
<i>Detail Description: Includes R336962 Seal, R302-5 Zerk, R170714 Relief Fitting &amp; R254-79 Cup:</i>					
49	R164146	163679, 164146	Housing - Reel Bearing - Motor End	1	
<i>Detail Description: Includes: 1 ea: R170714 Fitting, R254-79 Cup, R302-5 Fitting &amp; R336962 Seal:</i>					
50	R458013	458013	Ring - Retaining	1	
51	R400106	400106	Bolt - Hex HD 1/4-20 x 5/8	2	
51	R321-4	321-4, 400108	Bolt - Hex HD 1/4-20 x 3/4	2	
52	R302-5	302-5, 471214, 471223, 471226	Fitting - Grease	2	

All original equipment manufacturers names and part numbers are used for identification purposes only, and we are in no way implying that our products are original equipment parts. Prices subject to change without notice.





# Replaces Jacobsen Greens King V & VI

## Parts

Cutting Unit  
Reel & Bedknife



Item No	R&R Part No.	OEM Part No.	Description	Qty Req	Order Quantity
53	<b>R4247911</b>	162567, 337370, 4247911	Coupling - Hyd Motor - Glass Filled	1	
53	<b>R3001720</b>	3001720	Coupler - Iron - Hyd Motor	1	
54	<b>R170714</b>	170714, 471240, 471242	Fitting - Pressure Relief	1	
55	<b>R315298</b>	315298	Bolt - Bed Bar	2	
56	<b>R3010296</b>	3010296	Pin - Motor Mounting	2	
57	<b>R304745</b>	304745	Washer - Reel	1	
58	<b>R363047</b>	348846, 363047	Spring - Reel	1	
59	<b>R5002151</b>	5002151	Hardware Kit - Spring/Washer	1	
<i>Detail Description: Includes 1 ea: R304745 Washer, R363047 Spring:</i>					
60	<b>R354083</b>	354083, 361877, 4127335	Decal - Danger	1	
61	<b>R461256</b>	461256	Pin - 1/4 x 1	2	
62	<b>R354928</b>	354928	Stop - Mower	1	
63	<b>R403751</b>	403751	Bolt - Serrated Washer HD	2	
64	<b>R163398</b>	163398, 163892	Seal - Spacer Assy	1	
65	<b>R363814</b>	163892, 363814	Spacer - Seal	1	
66	<b>R337677</b>	315257, 337677	Seal - Oil	1	
67	<b>R453023</b>	453023	Washer - Flat 1/4	4	

All original equipment manufacturers names and part numbers are used for identification purposes only, and we are in no way implying that our products are original equipment parts. Prices subject to change without notice.



# Replaces Jacobsen Greens King V & VI

## Parts

*Cutting Unit  
Reel & Bedknife*



Item No	R&R Part No.	OEM Part No.	Description	Qty Req	Order Quantity
68	<b>R3253-3</b>	3253-3, 446128, 446130	Washer - Lock 1/4	4	
70	<b>R365230</b>	365230	Verti-Cut Blade - 2-1/2 Dia.	85	
71	<b>R1000997</b>	1000997	Decal - Warning	1	
72	<b>R1002607</b>	1001021, 1002607	Pin - Assy Quick Release	1	
73	<b>R3005841</b>	3005841	Spring - Vent Cover	1	
74	<b>R461397</b>	461397	Pin - Roll 1/4 x 1-1/4	1	
75	<b>R2000065</b>	2000065	Weight - Counter	2	
76	<b>R453009</b>	3256-23, 452004, 452006, 452008, 453009	Washer - Flat 5/16 SAE	8	
77	<b>R445722</b>	445722	Nut - Serrated Washer	2	
78	<b>R400192</b>	400192	Bolt - Hex HD 5/16-18 x 1-1/2	8	
79	<b>R3010293</b>	3010293	Stop - Mower	1	
80	<b>R2810165</b>	2810165, 2810166, 3010236, 3010636	Clip - Spring Motor	1	
81	<b>R2810166</b>	2810166, 3010637	Clip - Spring Motor	1	

All original equipment manufacturers names and part numbers are used for identification purposes only, and we are in no way implying that our products are original equipment parts. Prices subject to change without notice.