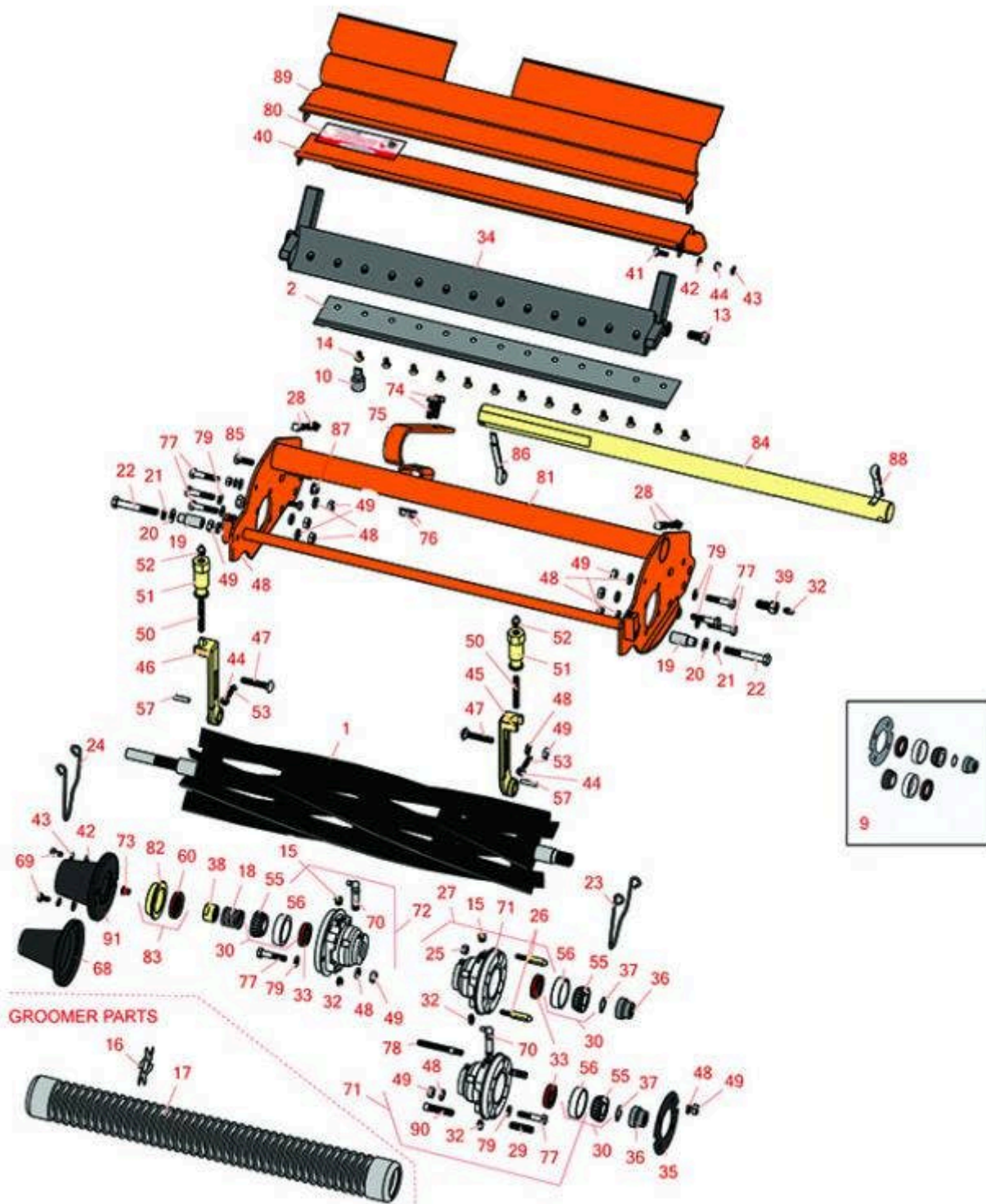




Replaces Jacobsen LF-123 Parts

Cutting Unit
Reel & Bedknife



All original equipment manufacturers names and part numbers are used for identification purposes only, and we are in no way implying that our products are original equipment parts. Prices subject to change without notice.



Replaces Jacobsen LF-123 Parts

Cutting Unit
Reel & Bedknife



Item No	R&R Part No.	OEM Part No.	Description	Qty Req	Order Quantity
---------	--------------	--------------	-------------	---------	----------------

R&R Reels, Lifetime Guaranteed

1	R503319	5001095, 5003053, 503319	Reel - 7 Blade LH	2	
---	----------------	--------------------------------	-------------------	---	--

Detail Description: R&R Reel blades are expertly crafted from premium high carbon-boron alloy steel, heat-treated to perfectly complement both R&R and OEM bedknives. Each reel undergoes precision cylindrical grinding on bearing surfaces, followed by relief grinding for optimal performance. Advanced computer balancing ensures extended reel and bearing life. Backed by our lifetime guarantee against defects in materials and craftsmanship under normal use, R&R Reels deliver unmatched durability and cutting precision you can trust.:

1	R503320	5001096, 5003054, 5003064, 503320	Reel - 7 Blade RH	3	
---	----------------	--	-------------------	---	--

Detail Description: R&R Reel blades are expertly crafted from premium high carbon-boron alloy steel, heat-treated to perfectly complement both R&R and OEM bedknives. Each reel undergoes precision cylindrical grinding on bearing surfaces, followed by relief grinding for optimal performance. Advanced computer balancing ensures extended reel and bearing life. Backed by our lifetime guarantee against defects in materials and craftsmanship under normal use, R&R Reels deliver unmatched durability and cutting precision you can trust.:

1	R503321	5001097, 503321	Reel - 5 Blade LH	2	
---	----------------	--------------------	-------------------	---	--

Detail Description: R&R Reel blades are expertly crafted from premium high carbon-boron alloy steel, heat-treated to perfectly complement both R&R and OEM bedknives. Each reel undergoes precision cylindrical grinding on bearing surfaces, followed by relief grinding for optimal performance. Advanced computer balancing ensures extended reel and bearing life. Backed by our lifetime guarantee against defects in materials and craftsmanship under normal use, R&R Reels deliver unmatched durability and cutting precision you can trust.:

1	R503322	5001098, 503322	Reel - 5 Blade RH	3	
---	----------------	--------------------	-------------------	---	--

Detail Description: R&R Reel blades are expertly crafted from premium high carbon-boron alloy steel, heat-treated to perfectly complement both R&R and OEM bedknives. Each reel undergoes precision cylindrical grinding on bearing surfaces, followed by relief grinding for optimal performance. Advanced computer balancing ensures extended reel and bearing life. Backed by our lifetime guarantee against defects in materials and craftsmanship under normal use, R&R Reels deliver unmatched durability and cutting precision you can trust.:

2	R503460	503257, 503460	Bedknife - 22 in 13 Hole	0	
---	----------------	-------------------	--------------------------	---	--

All original equipment manufacturers names and part numbers are used for identification purposes only, and we are in no way implying that our products are original equipment parts. Prices subject to change without notice.



Replaces Jacobsen LF-123 Parts

Cutting Unit
Reel & Bedknife



Item No	R&R Part No.	OEM Part No.	Description	Qty Req	Order Quantity
---------	--------------	--------------	-------------	---------	----------------

Detail Description: R&R Bedknives are manufactured from high carbon-boron alloy steel and then hardened to RC46-49 to match the temper of our reel blades and original equipment reels. Bedknives are surface ground on the top and front edge and straightened three times before being packaged with oil for rust prevention. All R&R Bedknives now have an increased front edge grind for added life. All R&R Bedknives are guaranteed against defects in material and workmanship under normal use for the life of the part.:

R&R Razor Tool Steel Bedknives, Lifetime Guaranteed

2	R101523		Bedknife - Razor Tool Steel - 22 High Cut	1	
---	---------	--	---	---	--

Detail Description: R&R Razor bedknives are manufactured from premium alloy tool steel steel and then hardened to RC48-51 to match the temper of our Razor reel blades and original equipment premium series reels. Bedknives are surface ground on the top and front edge and specially packaged for rust prevention. All R&R Bedknives now have an increased front edge grind for added life. All R&R Bedknives are guaranteed against defects in material and workmanship under normal use for the life of the part. You can expect up to double the life over standard bedknives.:

Overhaul Kits & Service Tools

9	R100125		Overhaul Kit - Cutting Unit	0	
---	---------	--	-----------------------------	---	--

Detail Description: Includes 2 ea.: R336962 Seals, R254-78 Bearings, R254-79 Cups; 1 ea.:R337677 Seal, R458013 Ring, R364901Gasket, R337370 Coupling:

10	R101272T		Bedknife Screw Driver Tool	0	
----	----------	--	----------------------------	---	--

Tech Note: Easily install and remove bed knife screws with the help of a ratchet. Tool manufactured with hardened alloy steel.:

Detail Description: Easily install and remove bed knife screws with the help of a ratchet. Tool manufactured with hardened alloy steel.:

Other Parts Available

13	R315298	315298	Bolt - Bed Bar	2	
14	R101272	101272, 3009138, 402578, 800813	Screw - Bedknife 1/4-20 x 1/2	13	
15	R170714	170714, 471240, 471242	Fitting - Pressure Relief	2	

All original equipment manufacturers names and part numbers are used for identification purposes only, and we are in no way implying that our products are original equipment parts. Prices subject to change without notice.



Replaces Jacobsen LF-123 Parts

Cutting Unit
Reel & Bedknife



Item No	R&R Part No.	OEM Part No.	Description	Qty Req	Order Quantity
16	R365230	365230	Verti-Cut Blade - 2-1/2 Dia.	40	
17	R390900	390900	Roller - Grooved 2-1/2 x 22	1	
<i>Detail Description: Note: w/ 1/2 Spacing:</i>					
18	R363047	348846, 363047	Spring - Reel	1	
19	R101525	101525	Spacer - Mower Mounting Assy	2	
20	R453011	453011	Washer - Flat 3/8 SAE Y/Zinc	4	
21	R3254-6	3254-6, 446140, 446142	Washer - Lock 3/8	2	
22	R101526	101526	Bolt - Hex HD 3/8-16 x 2-1/2 GR5	2	
23	R2810166	2810166, 3010637	Clip - Spring Motor	1	
24	R2810165	2810165, 2810166, 3010236, 3010636	Clip - Spring Motor	1	
25	R32152-4	32152-4, 444708	Locknut - 1/4-20 All Metal	2	
26	R3010296	3010296	Pin - Motor Mounting	2	
27	R1004786	1004786	Housing - Bearing Quick Clip	1	
<i>Detail Description: Includes: R336962, R302-5, R254-79, R3010296, R32152-4 & R170714:</i>					
28	R412506	412503, 412506	Screw - Bed Bar Adjusting	4	
29	R101327		Stud - Housing	2	
<i>Detail Description: Fits R101328 Only:</i>					
30	R500534	500534, R500534	Bearing - with Cup	2	

All original equipment manufacturers names and part numbers are used for identification purposes only, and we are in no way implying that our products are original equipment parts. Prices subject to change without notice.



Replaces Jacobsen LF-123 Parts

Cutting Unit
Reel & Bedknife



Item No	R&R Part No.	OEM Part No.	Description	Qty Req	Order Quantity
---------	--------------	--------------	-------------	---------	----------------

Detail Description: Kit includes: 1 ea R254-78- Bearing Cone & R254-79 Bearing Cone:

32	R302-5	302-5, 471214, 471223, 471226	Fitting - Grease	2	
33	R336962	336962	Seal	2	
34	R220278	121856, 220278, 5000415	Backing Bar - Cast	1	
34	R2000068	2000068	Bed Bar	1	
35	R364901	364901	Gasket - Reel Motor	1	
36	R4247911	162567, 337370, 4247911	Coupling - Hyd Motor - Glass Filled	1	
36	R3001720	3001720	Coupler - Iron - Hyd Motor	1	
37	R458013	458013	Ring - Retaining	1	
38	R364900	364900	Nut - Reel Tension	1	
39	R345470	1002226, 345470	Bolt - Rear Roller 7/16-20	2	

Detail Description: Incl. Grease Zerk:

40	R390950	126724, 2810043, 390950	Shield - Grass	1	
41	R400106	400106	Bolt - Hex HD 1/4-20 x 5/8	2	
42	R453023	453023	Washer - Flat 1/4	4	
43	R3253-3	3253-3, 446128, 446130	Washer - Lock 1/4	4	
44	R443102	443102	Nut - 1/4-20 Yellow Zinc	2	

All original equipment manufacturers names and part numbers are used for identification purposes only, and we are in no way implying that our products are original equipment parts. Prices subject to change without notice.



Replaces Jacobsen LF-123 Parts

Cutting Unit
Reel & Bedknife



Item No	R&R Part No.	OEM Part No.	Description	Qty Req	Order Quantity
45	R153979	153979, 3008439	Bracket - Front Roller	1	
46	R153980	153980, 3008438	Bracket - Front Roller	1	
47	R441674	441674	Screw - 5/16-18 x 1-3/4 Carriage	2	
48	R446136	446134, 446136	Washer - Lock 5/16 Zinc	2	
49	R443106	443106	Nut - 5/16-18 Y/Zinc Plated	2	
50	R343616	343616, 443102	Stud	2	
51	R365009	3005692, 365009, 365170, 441674	Knob - Adjusting Roller	2	
52	R471219	366852, 471219	Zerk - Grease	2	
53	R352737	352737	Screw - Set 1/4 x 7/8 Sq Head	2	
55	R254-78	254-78, 385174, 4121174, 4135152	Tapered Bearing Cone	2	
56	R254-79	254-79, 4121175	Cup - Bearing	2	
<i>Detail Description: Use R254-79M installation mandrel to properly install race.:</i>					
57	R461256	461256	Pin - 1/4 x 1	2	
60	R337677	315257, 337677	Seal - Oil	1	
68	R338675	338675, 557775	Cover - Shaft End	1	
69	R400104	400104	Bolt - Hex HD 1/4-20 x 1/2	2	

All original equipment manufacturers names and part numbers are used for identification purposes only, and we are in no way implying that our products are original equipment parts. Prices subject to change without notice.



Replaces Jacobsen LF-123 Parts

Cutting Unit
Reel & Bedknife



Item No	R&R Part No.	OEM Part No.	Description	Qty Req	Order Quantity
70	R363896	363896	Fitting - Grease w/Extension	2	
71	R163396	163396	Housing - Reel Brg Motor End	1	
<i>Detail Description: Includes: 4 ea: R361097 Stud; 1 ea: R254-79 Cup, R336962 Seal, R363896 Grease Fitting:</i>					
71	R164146	163679, 164146	Housing - Reel Bearing - Motor End	1	
<i>Tech Note: Housing has no studs, uses 2 bolts:</i>					
<i>Detail Description: Includes: 1 ea: R170714 Fitting, R254-79 Cup, R302-5 Fitting & R336962 Seal:</i>					
71	R101328		Housing - Bearing Motor End	1	
<i>Detail Description: Includes R302-5, R336962, R170714, R101327 & Cup Portion of R500534. Housing has 2 studs, uses no bolts:</i>					
72	R164144	1000480, 163397, 164144, 2000060	Housing - Reel Bearing	1	
<i>Detail Description: Includes R336962 Seal, R302-5 Zerk, R170714 Relief Fitting & R254-79 Cup:</i>					
73	R352132	352132	Caplug - Reel Shaft End	1	
74	R403751	403751	Bolt - Serrated Washer HD	2	
75	R354928	354928	Stop - Mower	1	
76	R445722	445722	Nut - Serrated Washer	2	
77	R400192	400192	Bolt - Hex HD 5/16-18 x 1-1/2	8	
78	R361097	361097	Stud - Reel Brg Housing	1	
79	R453009	3256-23, 452004, 452006, 452008, 453009	Washer - Flat 5/16 SAE	4	

All original equipment manufacturers names and part numbers are used for identification purposes only, and we are in no way implying that our products are original equipment parts. Prices subject to change without notice.



Replaces Jacobsen LF-123 Parts

Cutting Unit
Reel & Bedknife



Item No	R&R Part No.	OEM Part No.	Description	Qty Req	Order Quantity
80	R354083	354083, 361877, 4127335	Decal - Danger	1	
81	R122685	119245, 122685, 503325	Frame	1	
82	R363814	163892, 363814	Spacer - Seal	1	
83	R163398	163398, 163892	Seal - Spacer Assy	1	
84	R364898	364898	Shaft - Weight Bar	1	
85	R400186	400186	Bolt - Hex HD 5/16-18 x 7/8	1	
86	R460080	460080	Pin - Cotter 3/8 x 3	1	
87	R445781	445781	Nut - 5/16-18 Whiz	1	
88	R460068	460068	Pin - Cotter 1/4 x 2	4	
89	R390940	390940, 67780	Deflector - Rear Discharge	1	
90	R441812	441812	Screw - 3/8-1-1/2 Sq HD Set	2	
91	R2000065	2000065	Weight - Counter	1	

All original equipment manufacturers names and part numbers are used for identification purposes only, and we are in no way implying that our products are original equipment parts. Prices subject to change without notice.