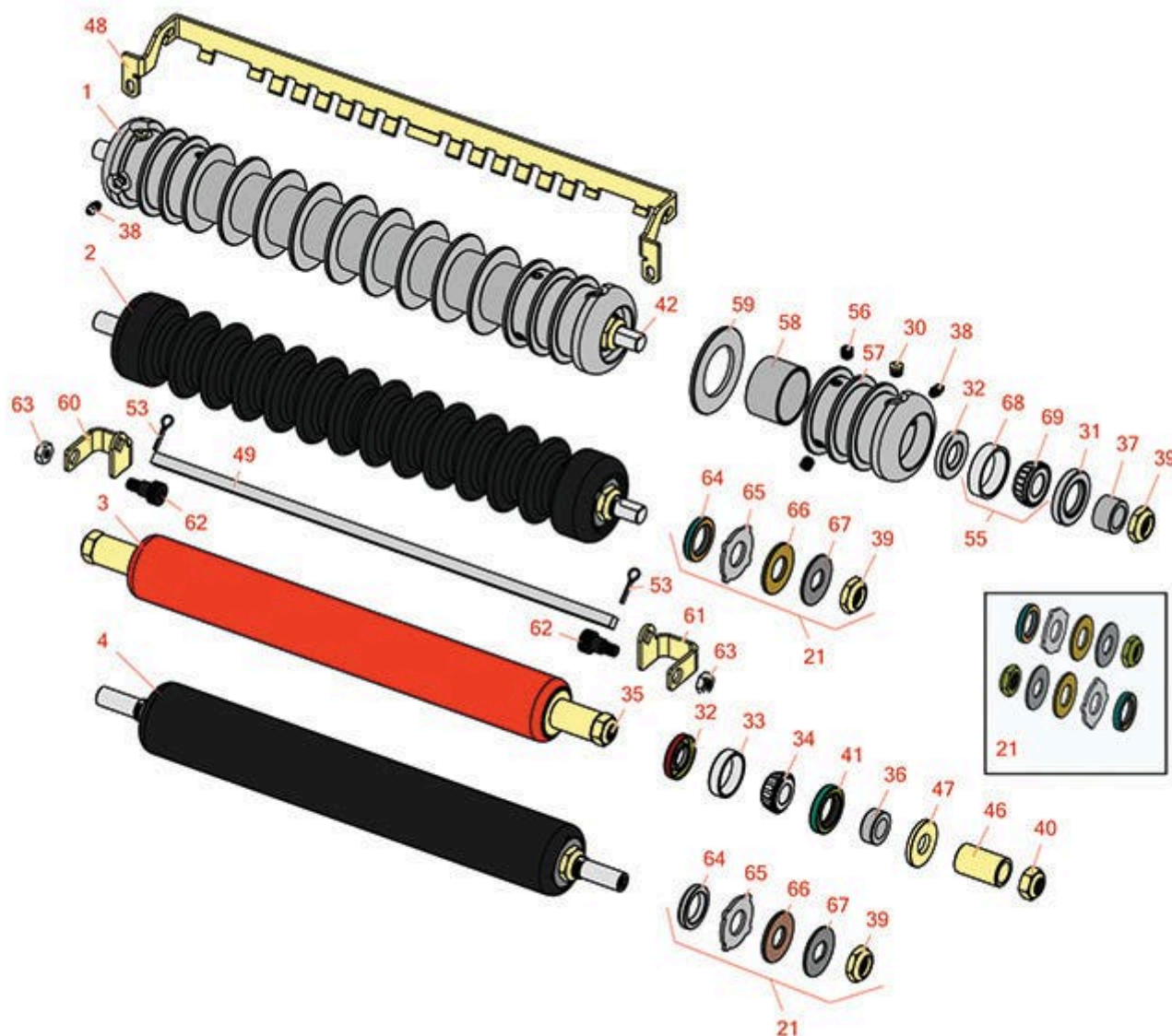


## Replaces Jacobsen LF-1880 Parts

### Cutting Unit Rollers



All original equipment manufacturers names and part numbers are used for identification purposes only, and we are in no way implying that our products are original equipment parts. Prices subject to change without notice.



# Replaces Jacobsen LF-1880 Parts

Cutting Unit  
Rollers



Item No	R&R Part No.	OEM Part No.	Description	Qty Req	Order Quantity
---------	--------------	--------------	-------------	---------	----------------

## R&R Front Rollers

1	R101373		Roller - Grooved Repairable Steel	0	
<i>Detail Description: Constructed with a through shaft and greasable ball bearings, this roller can be repaired by unscrewing the ends and replacing the series of washers and spacers.:</i>					

2	R1013770		Roller - Grooved UHMW Polyethylene	0	
<i>Detail Description: Machined from solid UHMW, this low maintenance roller rotates around a 1" solid stainless steel shaft and requires no bearings or grease. Patented groove design and smooth UHMW material prevents build-up of debris.:</i>					

## R&R Rear Rollers

3	R4115860		Roller - Smooth Tubular Steel	0	
<i>Detail Description: Constructed with a through shaft, this heavy duty roller uses greasable tapered bearings for extended life.:</i>					

4	R101396		Roller - Smooth UHMW Polyethylene	0	
<i>Detail Description: Machined from solid UHMW, this low maintenance roller uses a 1" solid stainless steel shaft and requires no grease. UHMW material prevents build-up of debris.:</i>					

## Overhaul Kits

21	R101399		Overhaul Kit - UHMW 2 Pc Roller	1	
<i>Detail Description: Fits all R&amp;R 2-1/2" - 3-1/2" Dia. Black UHMW Plastic Rollers that do not use ball bearings.. Includes 2 ea.: R1503230 Star Washers, R1503470 Seals, R150333 Thrust Washers, R3296-15 Locknuts, R1503471 Bronze Thrust Washers:</i>					

## Other Parts Available

30	R170714	170714, 471240, 471242	Fitting - Pressure Relief	2	
31	R253-117	253-117, 3004882	Seal - Outer Triple Lip	2	
32	R253-152	3001656	Seal - Inner Roller	2	

All original equipment manufacturers names and part numbers are used for identification purposes only, and we are in no way implying that our products are original equipment parts. Prices subject to change without notice.



# Replaces Jacobsen LF-1880 Parts

Cutting Unit  
Rollers



Item No	R&R Part No.	OEM Part No.	Description	Qty Req	Order Quantity
32	<b>R338647</b>	338647	Seal - Inner Roller	2	
<i>Tech Note: Fits O.E.M. 2811028 Roller Only:</i>					
33	<b>R254-67</b>	307108, 5000625, 500625	Cup - Bearing	2	
34	<b>R254-68</b>	307109, 5000625, 500625	Tapered Bearing Cone	2	
35	<b>R2811039</b>	2811039	Shaft - Rear Roller	1	
36	<b>R3001762</b>	30001762, 3001762	Sleeve - Wear Hardened	2	
37	<b>R3005156</b>	3005156	Sleeve - Wear Hardened	2	
<i>Tech Note: Fits O.E.M. 2811028 Roller Only:</i>					
37	<b>R5-4038</b>	5-4038	Sleeve - Wear Reel Shaft	2	
<i>Tech Note: Fits R101373 Roller Only:</i>					
38	<b>R302-5</b>	302-5, 471214, 471223, 471226	Fitting - Grease	2	
39	<b>R3296-15</b>	3296-15, 367029, 444742	Locknut - 3/4-16 Nylon Jam	2	
40	<b>R3296-33</b>	444820, 445718, 445801	Locknut - 5/8-18 ESNA Jam	2	
41	<b>R337593</b>	3000983, 337593	Seal	2	
42	<b>R2811030</b>	2811030	Shaft	1	
46	<b>R4115523</b>	4115523	Spacer - Rear Roller	2	
47	<b>R4115557</b>	4115557	Washer	2	

All original equipment manufacturers names and part numbers are used for identification purposes only, and we are in no way implying that our products are original equipment parts. Prices subject to change without notice.



## Replaces Jacobsen LF-1880 Parts

Cutting Unit  
Rollers



Item No	R&R Part No.	OEM Part No.	Description	Qty Req	Order Quantity
48	<b>R4116934</b>	4116934	Scraper - Grooved Roller	1	
<i>Tech Note: Fits O.E.M.2811028 Roller Only:</i>					
48	<b>R101376</b>		Scraper - Fits R101373 Roller	1	
<i>Tech Note: Fits R101373 Roller Only:</i>					
49	<b>R4118379</b>	4118379	Scraper - Rod	1	
53	<b>R460026</b>	460026	Pin - Cotter 1/8 x 3/4	2	
55	<b>R500534</b>	500534, R500534	Bearing - with Cup	2	
<i>Detail Description: Kit includes: 1 ea R254-78- Bearing Cone &amp; R254-79 Bearing Cone:</i>					
56	<b>R150691</b>		Screw - Set Nyloc 3/8-16 x 3/8	4	
57	<b>R100103</b>		Roller End - Grooved	2	
58	<b>R150676</b>	150676	Spacer - 2-3/4 Dia x 1-1/4 L	0	
59	<b>R150673</b>	150673	Washer - 3 Repairable Roller	11	
60	<b>R4121861</b>	4121861	Bracket - LH Rear Roller Scraper	1	
61	<b>R4121862</b>	4121862	Bracket - RH Rear Roller Scraper	1	
62	<b>R365246</b>	365246	Bolt - Shoulder w/Nyloc Patch	2	
63	<b>R443110</b>	306562, 443110, 444762	Nut - 3/8-16 Hex	2	
64	<b>R1503470</b>		Seal - Inner Wiper	2	
65	<b>R1503230</b>		Washer - Thrust Outer Keyed	2	
66	<b>R1503471</b>		Washer - Thrust SAE660 Bronze	2	
67	<b>R150333</b>		Washer - Flat Keyed Outer SS	2	
68	<b>R254-79</b>	254-79, 4121175	Cup - Bearing	2	

All original equipment manufacturers names and part numbers are used for identification purposes only, and we are in no way implying that our products are original equipment parts. Prices subject to change without notice.



# Replaces Jacobsen LF-1880 Parts

Cutting Unit  
Rollers



Item No	R&R Part No.	OEM Part No.	Description	Qty Req	Order Quantity
---------	--------------	--------------	-------------	---------	----------------

*Detail Description: Use R254-79M installation mandrel to properly install race.:*

69	<b>R254-78</b>	254-78, 385174, 4121174, 4135152	Tapered Bearing Cone	2	
----	----------------	---	----------------------	---	--

All original equipment manufacturers names and part numbers are used for identification purposes only, and we are in no way implying that our products are original equipment parts. Prices subject to change without notice.