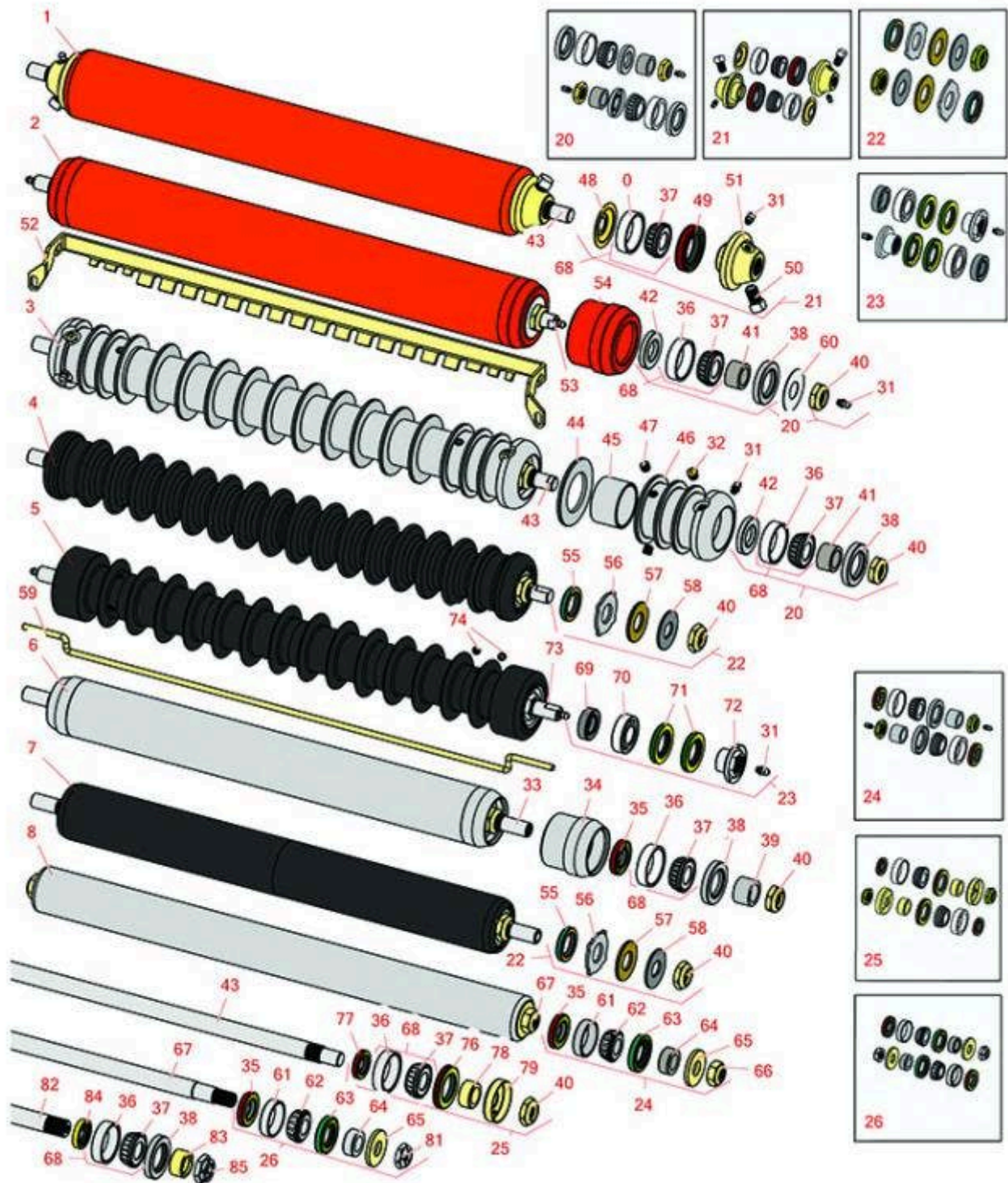




Replaces Jacobsen LF-570 Parts

Rollers



All original equipment manufacturers names and part numbers are used for identification purposes only, and we are in no way implying that our products are original equipment parts. Prices subject to change without notice.



Replaces Jacobsen LF-570 Parts

Rollers



Item No	R&R Part No.	OEM Part No.	Description	Qty Req	Order Quantity
---------	--------------	--------------	-------------	---------	----------------

R&R Front Rollers

1	R700530	132202	Roller - Smooth Tubular Steel	0
---	----------------	--------	-------------------------------	---

Tech Note: Constructed with a through shaft, this heavy-duty roller uses greasable tapered bearings for extended life.:

Detail Description: Constructed with a through shaft, this heavy-duty roller uses greasable tapered bearings for extended life.:

2	R700535		Roller - Smooth Tubular Steel	0
---	----------------	--	-------------------------------	---

Tech Note: Constructed with a through shaft, this heavy duty roller uses greasable tapered bearings for extended life.:

Detail Description: Constructed with a through shaft, this heavy duty roller uses greasable tapered bearings for extended life.:

3	R100100	123268	Roller - Grooved Repairable Steel	0
---	----------------	--------	-----------------------------------	---

Tech Note: Constructed with a through shaft and greasable ball bearings, this roller can be repaired by unscrewing the ends and replacing the series of washers and spacers.:

Detail Description: Constructed with a through shaft and greasable ball bearings, this roller can be repaired by unscrewing the ends and replacing the series of washers and spacers.:

4	R1013602		Roller - Grooved UHMW Polyethylene	0
---	-----------------	--	------------------------------------	---

Tech Note: Machined from solid UHMW, this low maintenance roller rotates around a 1" solid stainless steel shaft and requires no bearings or grease. Patented groove design and smooth UHMW material prevents build-up of debris.:

Detail Description: Machined from solid UHMW, this low maintenance roller rotates around a 1" solid stainless steel shaft and requires no bearings or grease. Patented groove design and smooth UHMW material prevents build-up of debris.:

5	R1013670		Roller - Grooved UHMW Polyethylene	0
---	-----------------	--	------------------------------------	---

Tech Note: Machined from solid UHMW plastic that prevents build-up of debris. This roller has a patented deep groove design and turns on precision stainless ball bearings.:

Detail Description: Machined from solid UHMW plastic that prevents build-up of debris. This roller has a patented deep groove design and turns on precision stainless ball bearings.:

All original equipment manufacturers names and part numbers are used for identification purposes only, and we are in no way implying that our products are original equipment parts. Prices subject to change without notice.



Replaces Jacobsen LF-570 Parts

Rollers



Item No	R&R Part No.	OEM Part No.	Description	Qty Req	Order Quantity
---------	--------------	--------------	-------------	---------	----------------

R&R Rear Rollers

6	R100105	100105, 1002446, 1003728	Roller - Smooth Heavy Duty Tubular Steel	0	
---	----------------	--------------------------------	---	---	--

Tech Note: Constructed with a through shaft, this heavy duty roller uses tapered bearings for extended life. This roller body measures 21" in length.:

Detail Description: Constructed with a through shaft, this heavy duty roller uses tapered bearings for extended life. This roller body measures 21" in length.:

7	R1013662		Roller - Smooth UHMW Polyethylene	0	
---	-----------------	--	--------------------------------------	---	--

Tech Note: Machined from solid UHMW, this low maintenance roller uses a 1" solid stainless steel shaft and requires no grease. UHMW material prevents build-up of debris.:

Detail Description: Machined from solid UHMW, this low maintenance roller uses a 1" solid stainless steel shaft and requires no grease. UHMW material prevents build-up of debris.:

8	R1000770	1000770	Roller - Smooth Heavy Duty Tubular Steel	0	
---	-----------------	---------	---	---	--

Tech Note: Constructed with a through shaft, this heavy-duty roller uses tapered bearings for extended life. Body length measures 23-1/4".:

Detail Description: Constructed with a through shaft, this heavy-duty roller uses tapered bearings for extended life. Body length measures 23-1/4".:

Overhaul Kits

20	R100137		Overhaul Kit - Roller	1	
----	----------------	--	-----------------------	---	--

Tech Note: Includes 2 ea.: R3296-15 Locknuts, R302-5 Grease Fittings, R253-122 Seals, R253-117 Seals, R5-4038 Wear Sleeves, R254-78 Bearings & R254-79 Bearing Cups:

Detail Description: Includes 2 ea.: R3296-15 Locknuts, R302-5 Grease Fittings, R253-122 Seals, R253-117 Seals, R5-4038 Wear Sleeves, R254-78 Bearings & R254-79 Bearing Cups:

21	R700505		Conversion Kit - Roller	1	
----	----------------	--	-------------------------	---	--

Tech Note: Includes: 2 each: R254-78 Bearing Cones, R254-79 Bearing Cups, R328062 Seals, R412063 Square Head Set Screws, R700501 Roller Ends & R700502 Grease Retainers.:

All original equipment manufacturers names and part numbers are used for identification purposes only, and we are in no way implying that our products are original equipment parts. Prices subject to change without notice.



Replaces Jacobsen LF-570 Parts Rollers



Item No	R&R Part No.	OEM Part No.	Description	Qty Req	Order Quantity
<i>Detail Description: Includes: 2 each: R254-78 Bearing Cones, R254-79 Bearing Cups, R328062 Seals, R412063 Square Head Set Screws, R700501 Roller Ends & R700502 Grease Retainers.:</i>					
22	R101399		Overhaul Kit - UHMW 2 Pc Roller	1	
<i>Tech Note: Fits all R&R 2-1/2" - 3-1/2" Dia. Black UHMW Plastic Rollers that do not use ball bearings.. Includes 2 ea.: R1503230 Star Washers, R1503470 Seals, R150333 Thrust Washers, R3296-15 Locknuts, R1503471 Bronze Thrust Washers:</i>					
<i>Detail Description: Fits all R&R 2-1/2" - 3-1/2" Dia. Black UHMW Plastic Rollers that do not use ball bearings.. Includes 2 ea.: R1503230 Star Washers, R1503470 Seals, R150333 Thrust Washers, R3296-15 Locknuts, R1503471 Bronze Thrust Washers:</i>					
23	R114-5430	114-5430	Overhaul Kit - Roller	1	
<i>Tech Note: Includes 4 ea.: R112-7494 Seals; 2 ea.: R302-5 Grease Zerks, R114-3717 Seals, R112-5290 Bearings & R114-3745 Locknuts:</i>					
<i>Detail Description: Includes 4 ea.: R112-7494 Seals; 2 ea.: R302-5 Grease Zerks, R114-3717 Seals, R112-5290 Bearings & R114-3745 Locknuts:</i>					
24	R100136		Overhaul Kit - Roller	1	
<i>Tech Note: Includes 2 ea.: R150674 Wear Sleeves, R253-152 Seals, R253-117 Seals, R254-78 Bearings, R254-79 Bearing Cups, R3296-15 Locknuts & R302-5 Grease Fittings:</i>					
<i>Detail Description: Includes 2 ea.: R150674 Wear Sleeves, R253-152 Seals, R253-117 Seals, R254-78 Bearings, R254-79 Bearing Cups, R3296-15 Locknuts & R302-5 Grease Fittings:</i>					
25	R100133		Overhaul Kit - Roller	1	
<i>Tech Note: Includes: 2ea: R254-78 Bearings, R254-79 Bearing Cups, R3296-15 Locknuts, R338645 Cup Deflectors, R338646 Seals, R338647 Seals, & R366168 Wear Sleeves:</i>					
<i>Detail Description: Includes: 2ea: R254-78 Bearings, R254-79 Bearing Cups, R3296-15 Locknuts, R338645 Cup Deflectors, R338646 Seals, R338647 Seals, & R366168 Wear Sleeves:</i>					
26	R100139		Overhaul Kit - Roller	1	
<i>Tech Note: Includes 2 ea.: R254-67 Bearing Cups, R254-68 Bearing Cones, R337593 Seals, R253-152 Seals R3001762 Wear Sleeves, R3000698 Washers & R445718 Locknuts:</i>					
<i>Detail Description: Includes 2 ea.: R254-67 Bearing Cups, R254-68 Bearing Cones, R337593 Seals, R253-152 Seals R3001762 Wear Sleeves, R3000698 Washers & R445718 Locknuts:</i>					

Other Parts Available

All original equipment manufacturers names and part numbers are used for identification purposes only, and we are in no way implying that our products are original equipment parts. Prices subject to change without notice.



Replaces Jacobsen LF-570 Parts Rollers



Item No	R&R Part No.	OEM Part No.	Description	Qty Req	Order Quantity
31	R302-5	302-5, 471214, 471223, 471226	Fitting - Grease	2	
32	R170714	170714, 471240, 471242	Fitting - Pressure Relief	2	
33	R100106	100106	Shaft - Fits HD Rear Roller	1	
34	R61-0380		Roller End - Cap Solid	1	
35	R253-152	3001656	Seal - Inner Roller	2	
36	R254-79	254-79, 4121175	Cup - Bearing	2	
<i>Tech Note: Use R254-79M installation mandrel to properly install race.:</i>					
<i>Detail Description: Use R254-79M installation mandrel to properly install race.:</i>					
37	R254-78	254-78, 385174, 4121174, 4135152	Tapered Bearing Cone	2	
38	R253-117	253-117, 3004882	Seal - Outer Triple Lip	2	
39	R150674	150674	Sleeve - Wear 3/4 Plated	2	
40	R3296-15	3296-15, 367029, 444742	Locknut - 3/4-16 Nylon Jam	2	
41	R5-4038	5-4038	Sleeve - Wear Reel Shaft	2	
42	R253-122		Seal	2	
43	R100102	3003416, 366589	Shaft - Roller	1	
44	R150673	150673	Washer - 3 Repairable Roller	11	
45	R150676	150676	Spacer - 2-3/4 Dia x 1-1/4 L	0	

All original equipment manufacturers names and part numbers are used for identification purposes only, and we are in no way implying that our products are original equipment parts. Prices subject to change without notice.



Replaces Jacobsen LF-570 Parts

Rollers



Item No	R&R Part No.	OEM Part No.	Description	Qty Req	Order Quantity
46	R100103		Roller End - Grooved	2	
47	R150691		Screw - Set Nyloc 3/8-16 x 3/8	4	
48	R700502	700502	Retainer - Grease	2	
49	R328062	328062	Seal - Roller	2	
50	R412063	412063	Screw - Sq. HD. Set	2	
51	R700501	700501	Roller End - Regreasable	2	
52	R100110	100110, 391202	Scraper - Fits R100100	1	
<i>Tech Note: Fits R100100 3" Grooved Roller - 1-1/4" Spacing:</i>					
<i>Detail Description: Fits R100100 3" Grooved Roller - 1-1/4" Spacing:</i>					
52	R391202	391202	Scraper - Fits OEM Roller	1	
53	R700538	700538	Shaft - Fits R700535	1	
54	R170308		Roller End - Solid 3	2	
55	R1503470		Seal - Inner Wiper	2	
56	R1503230		Washer - Thrust Outer Keyed	2	
57	R1503471		Washer - Thrust SAE660 Bronze	2	
58	R150333		Washer - Flat Keyed Outer SS	2	
59	R3005316	3005316	Scraper - 24 Rear Roller (Rod)	1	
59	R3009280	3009280	Scraper - 22 Rear Roller (Rod)	1	
60	R150504	150504	Washer	1	
61	R254-67	307108, 5000625, 500625	Cup - Bearing	2	

All original equipment manufacturers names and part numbers are used for identification purposes only, and we are in no way implying that our products are original equipment parts. Prices subject to change without notice.



Replaces Jacobsen LF-570 Parts Rollers



Item No	R&R Part No.	OEM Part No.	Description	Qty Req	Order Quantity
62	R254-68	307109, 5000625, 500625	Tapered Bearing Cone	2	
63	R337593	3000983, 337593	Seal	2	
64	R3001762	30001762, 3001762	Sleeve - Wear Hardened	2	
65	R3000698	3000698	Washer	2	
66	R3296-33	444820, 445718, 445801	Locknut - 5/8-18 ESNA Jam	2	
67	R3001654	3001654	Shaft - Roller	1	
68	R500534	500534, R500534	Bearing - with Cup	2	
<i>Detail Description: Kit includes: 1 ea R254-78- Bearing Cone & R254-79 Bearing Cone:</i>					
69	R114-3717		Seal	2	
70	R112-5290		Bearing - Stainless	2	
71	R112-7494		Seal	4	
72	R114-3745		Locknut - Bearing - Stainless	2	
73	R1013671		Shaft - Roller	1	
74	R300106		Screw - Set 5/16-18 x 1/4	4	
Replaces Jacobsen 123268 3" Roller Parts					
76	R338646	338646	Seal - Outer Roller	2	
77	R338647	338647	Seal - Inner Roller	2	
78	R366168	336168, 366168	Sleeve - Wear Hardened	2	
79	R338645	338645	Deflector - Cup	2	

All original equipment manufacturers names and part numbers are used for identification purposes only, and we are in no way implying that our products are original equipment parts. Prices subject to change without notice.



Replaces Jacobsen LF-570 Parts

Rollers



Item No	R&R Part No.	OEM Part No.	Description	Qty Req	Order Quantity
---------	--------------	--------------	-------------	---------	----------------

Replaces Jacobsen 1000770 2" Roller Parts

81	R445718	445718, 445801	Locknut - 5/8-18 All Metal	2	
----	---------	-------------------	----------------------------	---	--

Replaces Jacobsen 1002446 (24") & 1003728 (22") 2-1/2" Solid Roller Parts

82	R3005318	3005318	Shaft - Fits OEM 1002446	1	
82	R3008027	3008027	Shaft - Fits 1003728 Roller	1	
83	R3005156	3005156	Sleeve - Wear Hardened	2	
84	R548274	548274	Seal - Oil	2	
85	R445798	445798	Locknut - 3/4-16 Stover	2	

All original equipment manufacturers names and part numbers are used for identification purposes only, and we are in no way implying that our products are original equipment parts. Prices subject to change without notice.