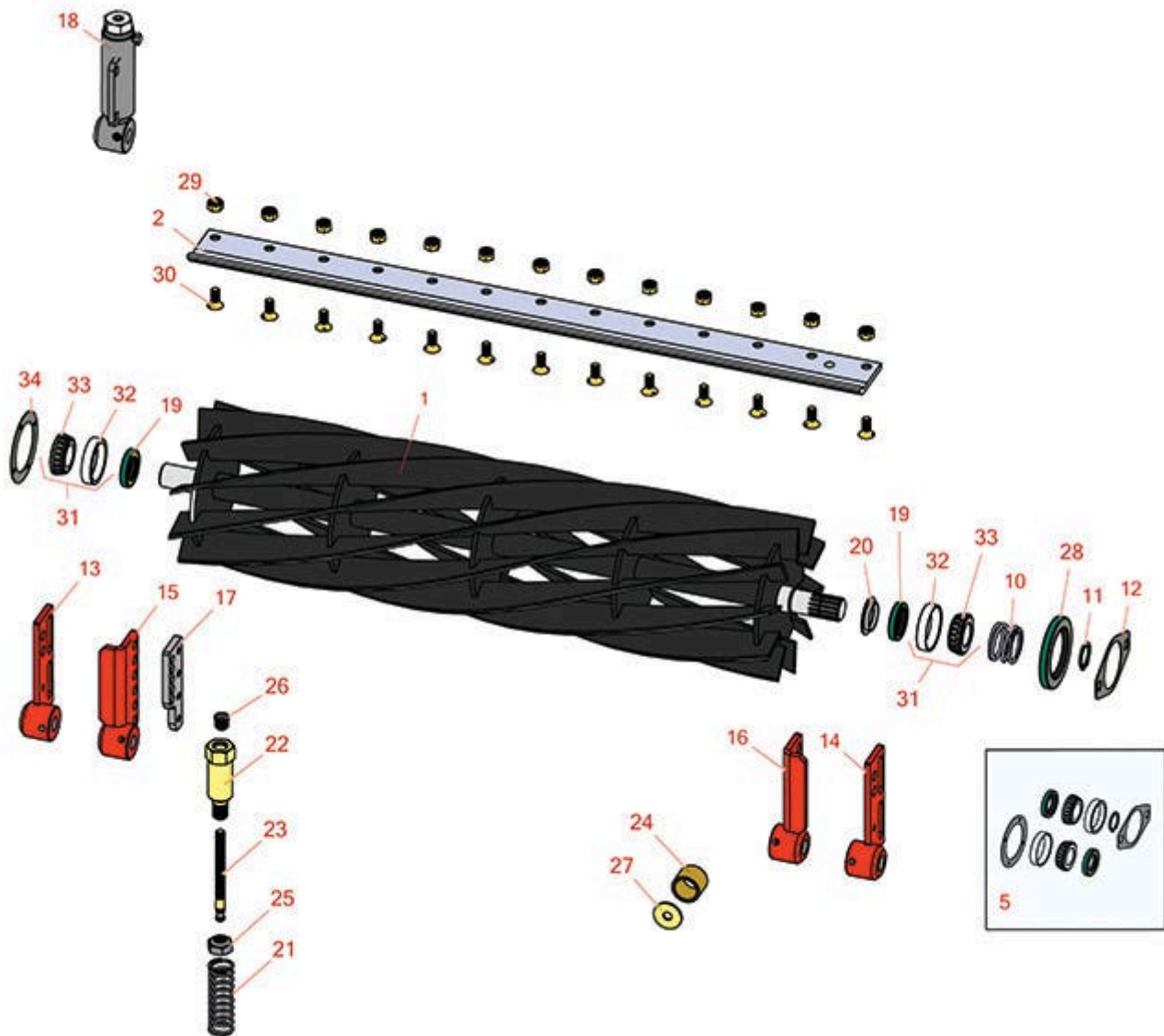




# Replaces Jacobsen Tri-King 1684D Parts

26" & 30" Hydraulic Cutting Unit  
Reel & Bedknife



All original equipment manufacturers names and part numbers are used for identification purposes only, and we are in no way implying that our products are original equipment parts. Prices subject to change without notice.



# Replaces Jacobsen Tri-King 1684D Parts

26" & 30" Hydraulic Cutting Unit  
Reel & Bedknife



Item No	R&R Part No.	OEM Part No.	Description	Qty Req	Order Quantity
---------	--------------	--------------	-------------	---------	----------------

## R&R 26" Reels, Lifetime Guaranteed

1	<b>R503274</b>	122547, 503274	Reel - 5 Blade LH 26 in	0
---	----------------	-------------------	-------------------------	---

*Detail Description: R&R Reel blades are expertly crafted from premium high carbon-boron alloy steel, heat-treated to perfectly complement both R&R and OEM bedknives. Each reel undergoes precision cylindrical grinding on bearing surfaces, followed by relief grinding for optimal performance. Advanced computer balancing ensures extended reel and bearing life. Backed by our lifetime guarantee against defects in materials and craftsmanship under normal use, R&R Reels deliver unmatched durability and cutting precision you can trust.:*

1	<b>R503275</b>	122546, 503275	Reel - 5 Blade RH 26 in	0
---	----------------	-------------------	-------------------------	---

*Detail Description: R&R Reel blades are expertly crafted from premium high carbon-boron alloy steel, heat-treated to perfectly complement both R&R and OEM bedknives. Each reel undergoes precision cylindrical grinding on bearing surfaces, followed by relief grinding for optimal performance. Advanced computer balancing ensures extended reel and bearing life. Backed by our lifetime guarantee against defects in materials and craftsmanship under normal use, R&R Reels deliver unmatched durability and cutting precision you can trust.:*

1	<b>R5002088</b>	5002088	Reel - 7 Blade RH 26 in	0
---	-----------------	---------	-------------------------	---

*Detail Description: R&R Reel blades are expertly crafted from premium high carbon-boron alloy steel, heat-treated to perfectly complement both R&R and OEM bedknives. Each reel undergoes precision cylindrical grinding on bearing surfaces, followed by relief grinding for optimal performance. Advanced computer balancing ensures extended reel and bearing life. Backed by our lifetime guarantee against defects in materials and craftsmanship under normal use, R&R Reels deliver unmatched durability and cutting precision you can trust.:*

1	<b>R5002087</b>	5002087	Reel - 7 Blade LH - 26 in	0
---	-----------------	---------	---------------------------	---

*Detail Description: R&R Reel blades are expertly crafted from premium high carbon-boron alloy steel, heat-treated to perfectly complement both R&R and OEM bedknives. Each reel undergoes precision cylindrical grinding on bearing surfaces, followed by relief grinding for optimal performance. Advanced computer balancing ensures extended reel and bearing life. Backed by our lifetime guarantee against defects in materials and craftsmanship under normal use, R&R Reels deliver unmatched durability and cutting precision you can trust.:*

1	<b>R503276</b>	122549, 503276	Reel - 10 Blade LH/Center - 26 in	0
---	----------------	-------------------	-----------------------------------	---

All original equipment manufacturers names and part numbers are used for identification purposes only, and we are in no way implying that our products are original equipment parts. Prices subject to change without notice.



# Replaces Jacobsen Tri-King 1684D Parts

## 26" & 30" Hydraulic Cutting Unit

### Reel & Bedknife



Item No	R&R Part No.	OEM Part No.	Description	Qty Req	Order Quantity
---------	--------------	--------------	-------------	---------	----------------

*Detail Description:* R&R Reel blades are expertly crafted from premium high carbon-boron alloy steel, heat-treated to perfectly complement both R&R and OEM bedknives. Each reel undergoes precision cylindrical grinding on bearing surfaces, followed by relief grinding for optimal performance. Advanced computer balancing ensures extended reel and bearing life. Backed by our lifetime guarantee against defects in materials and craftsmanship under normal use, R&R Reels deliver unmatched durability and cutting precision you can trust.:

1	<b>R503277</b>	122548, 503277	Reel - 10 Blade RH - 26 in	0
---	----------------	-------------------	----------------------------	---

*Detail Description:* R&R Reel blades are expertly crafted from premium high carbon-boron alloy steel, heat-treated to perfectly complement both R&R and OEM bedknives. Each reel undergoes precision cylindrical grinding on bearing surfaces, followed by relief grinding for optimal performance. Advanced computer balancing ensures extended reel and bearing life. Backed by our lifetime guarantee against defects in materials and craftsmanship under normal use, R&R Reels deliver unmatched durability and cutting precision you can trust.:

#### R&R 30" Reels, Lifetime Guaranteed

1	<b>R503359</b>	503359	Reel - 5 Blade LH/Center - 30 in	0
---	----------------	--------	----------------------------------	---

*Detail Description:* R&R Reel blades are expertly crafted from premium high carbon-boron alloy steel, heat-treated to perfectly complement both R&R and OEM bedknives. Each reel undergoes precision cylindrical grinding on bearing surfaces, followed by relief grinding for optimal performance. Advanced computer balancing ensures extended reel and bearing life. Backed by our lifetime guarantee against defects in materials and craftsmanship under normal use, R&R Reels deliver unmatched durability and cutting precision you can trust.:

1	<b>R503360</b>	503360	Reel - 5 Blade RH 30 in	0
---	----------------	--------	-------------------------	---

*Detail Description:* R&R Reel blades are expertly crafted from premium high carbon-boron alloy steel, heat-treated to perfectly complement both R&R and OEM bedknives. Each reel undergoes precision cylindrical grinding on bearing surfaces, followed by relief grinding for optimal performance. Advanced computer balancing ensures extended reel and bearing life. Backed by our lifetime guarantee against defects in materials and craftsmanship under normal use, R&R Reels deliver unmatched durability and cutting precision you can trust.:

1	<b>R5002090</b>	5002090	Reel - 7 Blade RH 30 in	0
---	-----------------	---------	-------------------------	---

*Detail Description:* R&R Reel blades are expertly crafted from premium high carbon-boron alloy steel, heat-treated to perfectly complement both R&R and OEM bedknives. Each reel undergoes precision cylindrical grinding on bearing surfaces, followed by relief grinding for optimal performance. Advanced computer balancing ensures extended reel and bearing life. Backed by our lifetime guarantee against defects in materials and craftsmanship under normal use, R&R Reels deliver unmatched durability and cutting precision you can trust.:

All original equipment manufacturers names and part numbers are used for identification purposes only, and we are in no way implying that our products are original equipment parts. Prices subject to change without notice.



## Replaces Jacobsen Tri-King 1684D Parts

26" & 30" Hydraulic Cutting Unit  
Reel & Bedknife



Item No	R&R Part No.	OEM Part No.	Description	Qty Req	Order Quantity
---------	--------------	--------------	-------------	---------	----------------

1	<b>R5002089</b>	5002089	Reel - 7 Blade LH - 30 in	0	
---	-----------------	---------	---------------------------	---	--

*Detail Description: R&R Reel blades are expertly crafted from premium high carbon-boron alloy steel, heat-treated to perfectly complement both R&R and OEM bedknives. Each reel undergoes precision cylindrical grinding on bearing surfaces, followed by relief grinding for optimal performance. Advanced computer balancing ensures extended reel and bearing life. Backed by our lifetime guarantee against defects in materials and craftsmanship under normal use, R&R Reels deliver unmatched durability and cutting precision you can trust.:*

1	<b>R503361</b>	503361	Reel - 10 Blade LH/Center - 30 in	0	
---	----------------	--------	-----------------------------------	---	--

*Detail Description: R&R Reel blades are expertly crafted from premium high carbon-boron alloy steel, heat-treated to perfectly complement both R&R and OEM bedknives. Each reel undergoes precision cylindrical grinding on bearing surfaces, followed by relief grinding for optimal performance. Advanced computer balancing ensures extended reel and bearing life. Backed by our lifetime guarantee against defects in materials and craftsmanship under normal use, R&R Reels deliver unmatched durability and cutting precision you can trust.:*

1	<b>R503362</b>	503362	Reel - 10 Blade RH - 30 in	0	
---	----------------	--------	----------------------------	---	--

*Detail Description: R&R Reel blades are expertly crafted from premium high carbon-boron alloy steel, heat-treated to perfectly complement both R&R and OEM bedknives. Each reel undergoes precision cylindrical grinding on bearing surfaces, followed by relief grinding for optimal performance. Advanced computer balancing ensures extended reel and bearing life. Backed by our lifetime guarantee against defects in materials and craftsmanship under normal use, R&R Reels deliver unmatched durability and cutting precision you can trust.:*

### R&R Bedknives, Lifetime Guaranteed

2	<b>R3000249</b>	3000249, 336419, 554284	Bedknife - 7/16 - 26 Inch	1	
---	-----------------	-------------------------------	---------------------------	---	--

2	<b>R503550</b>	331692, 503363, 503550	Bedknife - 30 in (13 Hole)	1	
---	----------------	------------------------------	----------------------------	---	--

*Tech Note: 1/2 IN HOC:*

*Detail Description: R&R Bedknives are manufactured from high carbon-boron alloy steel and then hardened to RC46-49 to match the temper of our reel blades and original equipment reels. Bedknives are surface ground on the top and front edge and straightened three times before being packaged with oil for rust prevention. All R&R Bedknives now have an increased front edge grind for added life. All R&R Bedknives are guaranteed against defects in material and workmanship under normal use for the life of the part.:*

All original equipment manufacturers names and part numbers are used for identification purposes only, and we are in no way implying that our products are original equipment parts. Prices subject to change without notice.



# Replaces Jacobsen Tri-King 1684D Parts

26" & 30" Hydraulic Cutting Unit  
Reel & Bedknife



Item No	R&R Part No.	OEM Part No.	Description	Qty Req	Order Quantity
---------	--------------	--------------	-------------	---------	----------------

## Overhaul Kits & Service Tools

5	<b>R100132</b>		Overhaul Kit - Cutting Unit	0	
---	----------------	--	-----------------------------	---	--

*Detail Description: Includes 2 ea.: R254-72 Bearing Cups, R254-94 Bearing Cones & R337593 Seals; 1 ea.: R364777 Gasket, R364147 Gasket & R458039 Retaining Ring:*

## Other Parts Available

10	<b>R364148</b>	364148	Spring - Reel Brg Tension	1	
11	<b>R458039</b>	458039	Ring - Retaining	1	
12	<b>R364777</b>	364777	Gasket - Motor End	1	
13	<b>R132312</b>	132312	Bracket - Roller RH	1	
14	<b>R132313</b>	132313	Bracket - Roller LH	1	
15	<b>R132028</b>	132028	Bracket - Front H.O.C. RH	1	
16	<b>R132029</b>	132029	Bracket - Front H.O.C. LH	1	
17	<b>R338859</b>	338859	Plate - Backup Roller Bracket	1	
18	<b>R131879</b>	131879	Bracket Adj Assy - Rear Roller	2	
19	<b>R337593</b>	3000983, 337593	Seal	2	
20	<b>R364275</b>	364275	Disc - Reel Shaft	1	
21	<b>R366973</b>	366973	Spring - Reel Adjusting	2	
22	<b>R365994</b>	365994	Handle - Adjusting 3/8-16 Thread	2	
23	<b>R364265</b>	364265	Screw - Adjusting Reel 3/8-16 Thd	2	
24	<b>R364140</b>	364140	Bushing	2	

*Tech Note: Pull Frame:*

All original equipment manufacturers names and part numbers are used for identification purposes only, and we are in no way implying that our products are original equipment parts. Prices subject to change without notice.



## Replaces Jacobsen Tri-King 1684D Parts

26" & 30" Hydraulic Cutting Unit  
Reel & Bedknife



Item No	R&R Part No.	OEM Part No.	Description	Qty Req	Order Quantity
25	<b>R3296-33</b>	444820, 445718, 445801	Locknut - 5/8-18 ESNA Jam	2	
26	<b>R472519</b>	472519	Plug - Adjusting Handle	2	
27	<b>R319755</b>	319755	Washer - Spring Mt	1	
28	<b>R338362</b>	338362	Seal - Oil Reel	1	
29	<b>R101271</b>	445684	Nut - Bedknife	13	
30	<b>R101270</b>	402698, 403757	Screw - Bedknife 3/8-24 x 13/16	13	
31	<b>R500596</b>	500596	Tapered Bearing Set - Cup and Cone	2	
32	<b>R254-72</b>	313456	Cup - Bearing	2	
33	<b>R254-94</b>	313089	Tapered Bearing Cone	2	
34	<b>R364147</b>	364147	Gasket - Cover	1	

All original equipment manufacturers names and part numbers are used for identification purposes only, and we are in no way implying that our products are original equipment parts. Prices subject to change without notice.