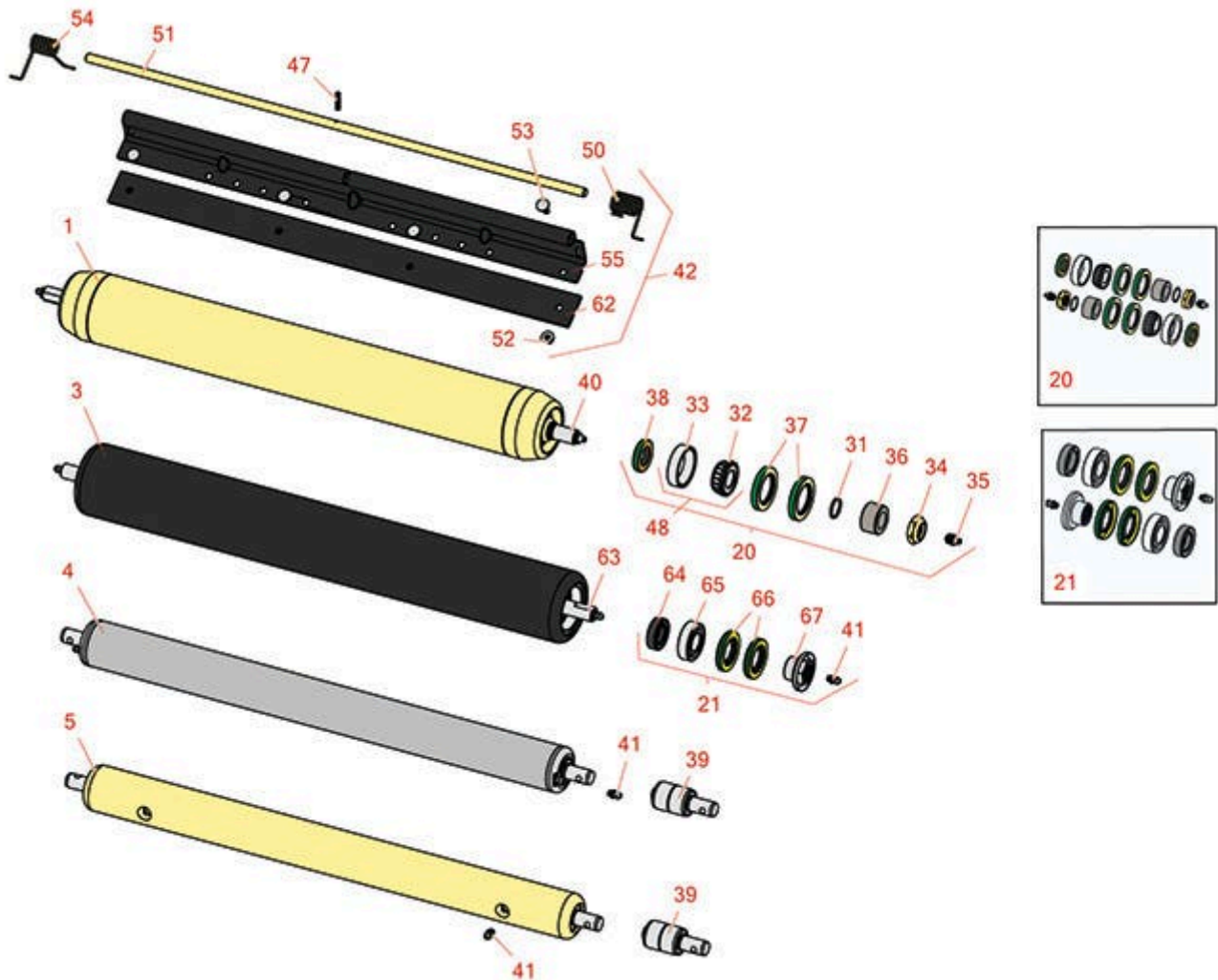




# Replaces John Deere 3225C Reel Mower

## Parts

Heavy Cutting Unit  
Rear Rollers



All original equipment manufacturers names and part numbers are used for identification purposes only, and we are in no way implying that our products are original equipment parts. Prices subject to change without notice.



# Replaces John Deere 3225C Reel Mower

## Parts

Heavy Cutting Unit  
Rear Rollers



Item No	R&R Part No.	OEM Part No.	Description	Qty Req	Order Quantity
---------	--------------	--------------	-------------	---------	----------------

### R&R Rear Rollers

1	RAET11263	AET11263, AMT2967	Roller - Smooth Tubular Steel	0	
---	-----------	----------------------	-------------------------------	---	--

*Detail Description: Constructed with a through shaft, this heavy duty roller uses greasable tapered bearings for extended life.:*

3	R1203825		Roller - Fusion Smooth UHMW Polyethylene	0	
---	----------	--	--	---	--

*Detail Description: Fusion Rollers combine the best features of our UHMW plastic rollers with a heavy-duty internal bearing system. Machined from solid UHMW plastic that prevents build-up of debris. This roller turns on precision stainless ball bearings and double seals for added life.:*

4	RAET10111	AET10111, AMT2876	Roller - Smooth Tubular Steel	0	
---	-----------	----------------------	-------------------------------	---	--

*Detail Description: This tubular steel roller uses greasable "water-pump" style bearings.:*

5	RAMT1442	AMT1442, AMT2878	Roller - Smooth Solid Steel	0	
---	----------	---------------------	-----------------------------	---	--

*Detail Description: Machined from solid steel, this heavy weight roller uses greasable "water-pump" style bearings.:*

### Overhaul Kits

20	RAET10632	AET10632	Overhaul Kit - Roller	0	
----	-----------	----------	-----------------------	---	--

*Detail Description: Includes 4 ea: RET15755 Seal; 2 ea: R237-54 O-Ring, R253-122 Seal, R254-78 Bearing, R254-79 Cup, R3296-15 Locknut, R471219 Grease Zerk, RET15726 Sleeve, RET15756 Seal;*

21	R114-5430		Overhaul Kit - Roller	0	
----	-----------	--	-----------------------	---	--

*Detail Description: Includes 4 ea.: R112-7494 Seals; 2 ea.: R302-5 Grease Zerks, R114-3717 Seals, R112-5290 Bearings & R114-3745 Locknuts:*

### Other Parts Available

31	R237-54	U46731, U6731	O-Ring - Small	2	
----	---------	------------------	----------------	---	--

All original equipment manufacturers names and part numbers are used for identification purposes only, and we are in no way implying that our products are original equipment parts. Prices subject to change without notice.



# Replaces John Deere 3225C Reel Mower Parts

Heavy Cutting Unit  
Rear Rollers



Item No	R&R Part No.	OEM Part No.	Description	Qty Req	Order Quantity
32	<b>R254-78</b>	JD8188	Tapered Bearing Cone	2	
33	<b>R254-79</b>	JD8226	Cup - Bearing	2	
<i>Detail Description: Use R254-79M installation mandrel to properly install race.:</i>					
34	<b>R3296-15</b>	N101345	Locknut - 3/4-16 Nylon Jam	2	
35	<b>R471219</b>	471219, 471231, JD7759, JD7798	Zerk - Grease	2	
36	<b>RET15726</b>	ET15726, RET15726	Sleeve - Wear Hardened	2	
37	<b>RET15755</b>	ET15755	Seal - Oil	4	
38	<b>RET15756</b>	ET15756, MT1739, MT739	Seal	2	
38	<b>R253-122</b>	253-122	Seal	2	
39	<b>RAA35741</b>	AA35741, AET10129, TCA22836	Bearing	2	
<i>Detail Description: 1/4" Side Hole:</i>					
40	<b>RET17515</b>	ET17515	Shaft - Roller	1	
41	<b>R302-5</b>	JD7797, JD7842, JD7844	Fitting - Grease	2	
42	<b>RBM17684</b>	BM17684	Scraper Kit - Solid Roller SET/5	1	
<i>Detail Description: Includes 20 ea: R03M7221 Bolt, R14M7303 Nut; 5 ea: R34M7010 Pin, R500571 Scraper Bar, RET17629 LH Spring, RET17630 RH Spring, RET17757 Pin, RMT2595 Scraper Blade:</i>					
47	<b>R34M7010</b>	34M7010	Pin - Spring	5	

All original equipment manufacturers names and part numbers are used for identification purposes only, and we are in no way implying that our products are original equipment parts. Prices subject to change without notice.



# Replaces John Deere 3225C Reel Mower Parts

Heavy Cutting Unit  
Rear Rollers



Item No	R&R Part No.	OEM Part No.	Description	Qty Req	Order Quantity
48	<b>R500534</b>		Bearing - with Cup	2	
<i>Detail Description: Kit includes: 1 ea R254-78- Bearing Cone &amp; R254-79 Bearing Cone:</i>					
50	<b>RET17629</b>	ET17629	Spring - Torsion LH	5	
51	<b>RET17757</b>	ET11757, ET17757	Pin - Scraper	5	
52	<b>R14M7303</b>	14M7303	Nut - 6mm x 1.0 Flanged	15	
53	<b>R03M7221</b>	03M7221	Bolt - Carriage M6 x 16	15	
54	<b>RET17630</b>	ET17630	Spring - Torsion RH	5	
55	<b>R500571</b>	MT2369	Bar - Scraper	5	
62	<b>RMT2595</b>	MT2595, MT2895	Scraper Blade - Solid Roller	1	
63	<b>R1203821</b>		Shaft - Fusion Roller	1	
64	<b>R114-3717</b>		Seal	2	
65	<b>R112-5290</b>		Bearing - Stainless	2	
66	<b>R112-7494</b>		Seal	4	
67	<b>R114-3745</b>		Locknut - Bearing - Stainless	2	

All original equipment manufacturers names and part numbers are used for identification purposes only, and we are in no way implying that our products are original equipment parts. Prices subject to change without notice.