

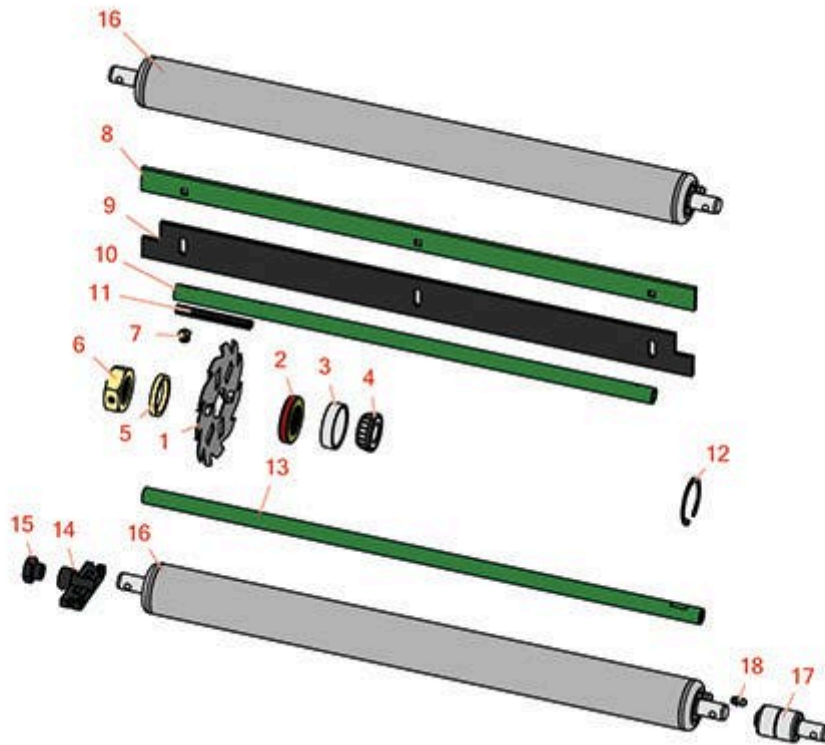


# Replaces John Deere 7500A Reel Mower

## Parts

Verti-Cut Unit

Verti-Cut Reel & Frame



All original equipment manufacturers names and part numbers are used for identification purposes only, and we are in no way implying that our products are original equipment parts. Prices subject to change without notice.



# Replaces John Deere 7500A Reel Mower

## Parts

Verti-Cut Unit

Verti-Cut Reel & Frame



| Item No  | R&R Part No.     | OEM Part No.          | Description                            | Qty Req | Order Quantity |
|--|------------------|-----------------------|--|---------|----------------|
| 1  | <b>R150109C</b>  |                       | Verti-Cut Blade - Carbide Tipped 1.2mm | 27      |                |
| 1  | <b>R150209C</b>  | TCU26776              | Verti-Cut Blade - Carbide Tipped 2mm   | 27      |                |
| 2  | <b>RET14566</b>  | ET14566               | Seal - Reel                            | 2       |                |
| 3  | <b>R254-79</b>   | JD8226                | Cup - Bearing                          | 2       |                |
| <i>Tech Note: Use R254-79M installation mandrel to properly install race.:</i> |                  |                       |  |         |                |
| 4  | <b>R254-78</b>   | JD8188                | Tapered Bearing Cone                   | 2       |                |
| 5  | <b>RET17713</b>  | ET17713               | Spacer - Vertical Mower Shaft          | 78      |                |
| 6  | <b>RET17053</b>  | ET17053               | Nut - 1-1/8-7 Jam Incl Set Screw       | 2       |                |
| 7  | <b>R170714</b>   | E14814                | Fitting - Pressure Relief              | 2       |                |
| 8  | <b>RAMT2704</b>  | AMT2704,<br>MT169     | Strap - Verticut Shield                | 1       |                |
| 9  | <b>RET17914</b>  | ET17914               | Rubber Isolator - Verticut             | 1       |                |
| 10   | <b>RTC26729</b>  | TCU26729              | Tube                                   | 1       |                |
| 11   | <b>RTC25398</b>  | TCU25398              | Compression Spring                     | 1       |                |
| 12   | <b>R40M7226</b>  | 40M1862,<br>40M7226   | Ring - Retaining                       | 2       |                |
| 13   | <b>RTC26727</b>  | TCU26727              | Rod                                    | 1       |                |
| 14   | <b>RTC28987</b>  | TCU28987              | Half Clamp - Roller Bkt                | 2       |                |
| 15   | <b>RTC28635</b>  | TCU24555,<br>TCU28635 | Eccentric                              | 2       |                |
| 16   | <b>RAET10111</b> | AET10111,<br>AMT2876  | Roller - Smooth Tubular Steel          | 2       |                |

*Tech Note: This tubular steel roller uses greasable "water-pump" style bearings.:*

All original equipment manufacturers names and part numbers are used for identification purposes only, and we are in no way implying that our products are original equipment parts. Prices subject to change without notice.

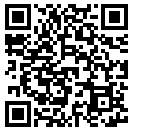


# Replaces John Deere 7500A Reel Mower

## Parts

Verti-Cut Unit

Verti-Cut Reel & Frame



| Item No  | R&R Part No.    | OEM Part No.                      | Description                 | Qty Req | Order Quantity |
|--|-----------------|-----------------------------------|-----------------------------|---------|----------------|
| 16   | <b>RAMT1442</b> | AMT1442,<br>AMT2878               | Roller - Smooth Solid Steel | 2       |                |
| <i>Tech Note: Machined from solid steel, this heavy weight roller uses greasable "water-pump" style bearings.:</i> |                 |                                   |                             |         |                |
| 17   | <b>RAA35741</b> | AA35741,<br>AET10129,<br>TCA22836 | Bearing                     | 4       |                |
| <i>Tech Note: 1/4" Side Hole:</i>  |                 |                                   |                             |         |                |
| 18   | <b>R302-5</b>   | JD7797,<br>JD7842,<br>JD7844      | Fitting - Grease            | 4       |                |

All original equipment manufacturers names and part numbers are used for identification purposes only, and we are in no way implying that our products are original equipment parts. Prices subject to change without notice.