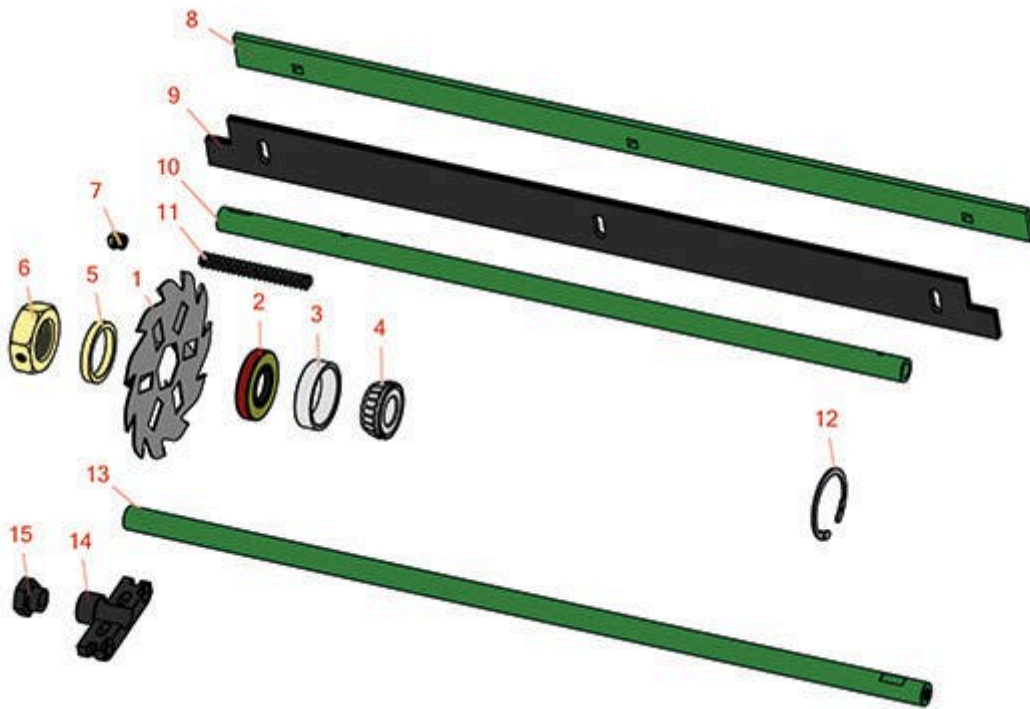




Replaces John Deere 7500A E-Cut Hybrid Reel Mower Parts

Verti-Cut Unit
Reel & Frame



All original equipment manufacturers names and part numbers are used for identification purposes only, and we are in no way implying that our products are original equipment parts. Prices subject to change without notice.



Replaces John Deere 7500A E-Cut Hybrid Reel Mower Parts

Verti-Cut Unit
Reel & Frame



Item No	R&R Part No.	OEM Part No.	Description	Qty Req	Order Quantity
1	R150109C		Verti-Cut Blade - Carbide Tipped 1.2mm	27	
1	R150209C	TCU26776	Verti-Cut Blade - Carbide Tipped 2mm	27	
2	RET14566	ET14566	Seal - Reel	2	
3	R254-79	JD8226	Cup - Bearing	2	
<i>Tech Note: Use R254-79M installation mandrel to properly install race.:</i>					
4	R254-78	JD8188	Tapered Bearing Cone	2	
5	RET17713	ET17713	Spacer - Vertical Mower Shaft	78	
6	RET17053	ET17053	Nut - 1-1/8-7 Jam Incl Set Screw	2	
7	R170714	E14814	Fitting - Pressure Relief	2	
8	RAMT2704	AMT2704, MT169	Strap - Verticut Shield	1	
9	RET17914	ET17914	Rubber Isolator - Verticut	1	
10	RTCUC26729	TCU26729	Tube	1	
11	RTCUC25398	TCU25398	Compression Spring	1	
12	R40M7226	40M1862, 40M7226	Ring - Retaining	2	
13	RTCUC26727	TCU26727	Rod	1	
14	RTCUC28987	TCU28987	Half Clamp - Roller Bkt	2	
15	RTCUC28635	TCU24555, TCU28635	Eccentric	2	

All original equipment manufacturers names and part numbers are used for identification purposes only, and we are in no way implying that our products are original equipment parts. Prices subject to change without notice.