

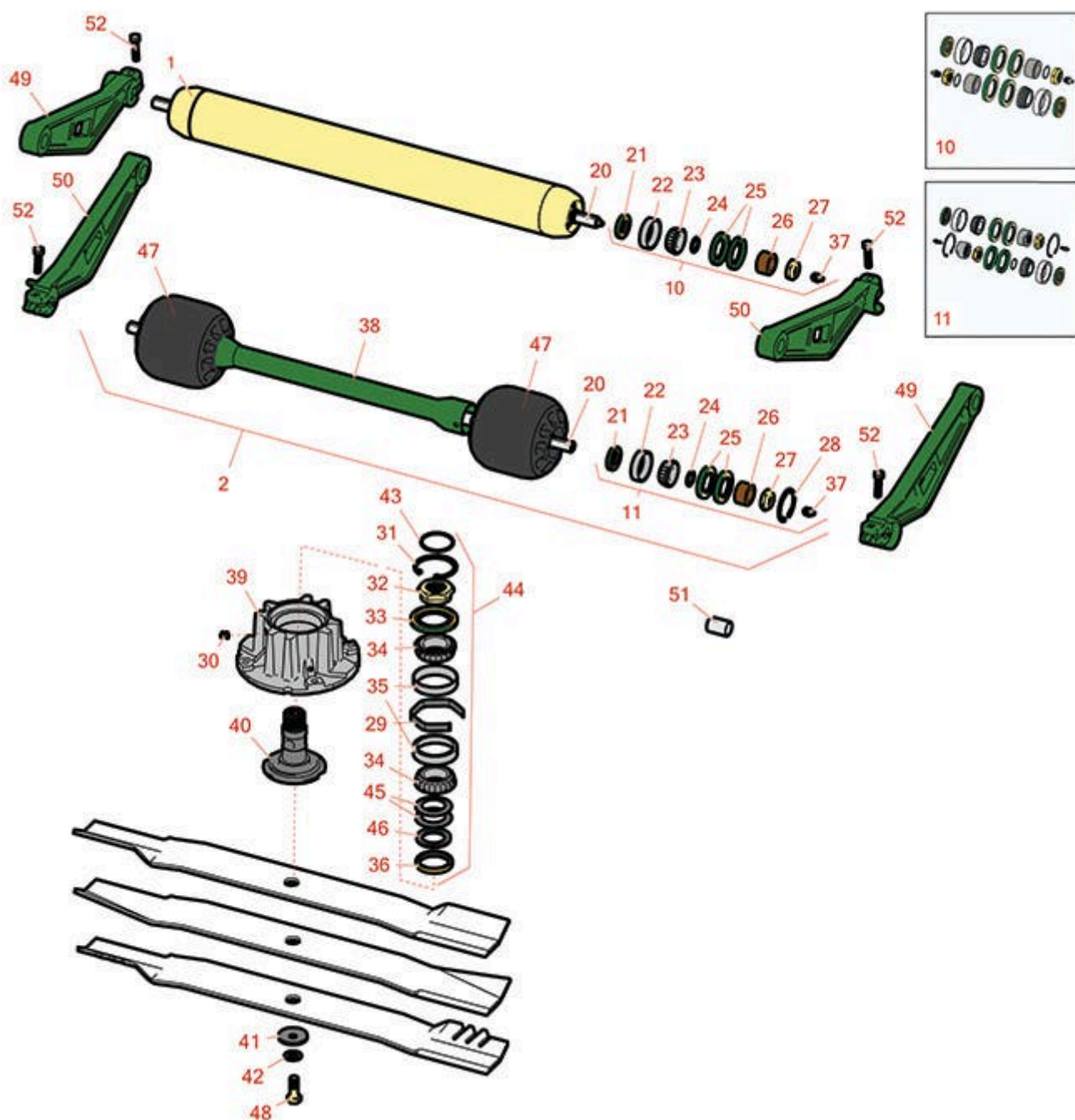


# Replaces John Deere 9009A Rotary

## Mower Parts

Rotary Cutting Unit

Rotary Cutting Unit



All original equipment manufacturers names and part numbers are used for identification purposes only, and we are in no way implying that our products are original equipment parts. Prices subject to change without notice.



# Replaces John Deere 9009A Rotary

## Mower Parts

Rotary Cutting Unit

Rotary Cutting Unit



Item No	R&R Part No.	OEM Part No.	Description	Qty Req	Order Quantity
---------	--------------	--------------	-------------	---------	----------------

### Rollers

1	RTCA25970	RTCA25970, TCA25970	Roller Assy	5	
2	RTCA25911	TCA25911	Roller - Front - 27 in Units	5	

### Overhaul Kits and Service Tools

10	RAET10632	AET10632	Overhaul Kit - Roller	5	
<i>Detail Description: Includes 4 ea: RET15755 Seal; 2 ea: R237-54 O-Ring, R253-122 Seal, R254-78 Bearing, R254-79 Cup, R3296-15 Locknut, R471219 Grease Zerk, RET15726 Sleeve, RET15756 Seal;</i>					
11	R500578		Overhaul Kit - Roller	5	

### Other Parts Available

20	RTC39718	TCU39718	Shaft - Roller - 29 in	10	
21	RET15756	ET15756, MT1739, MT739	Seal	20	
22	R254-79	JD8226	Cup - Bearing	20	
<i>Detail Description: Use R254-79M installation mandrel to properly install race.:</i>					
23	R254-78	JD8188	Tapered Bearing Cone	20	
24	R237-54	U46731, U6731	O-Ring - Small	20	
25	RET15755	ET15755	Seal - Oil	40	
26	RET15726	ET15726, RET15726	Sleeve - Wear Hardened	20	
27	R3296-15	N101345	Locknut - 3/4-16 Nylon Jam	20	
28	R40M1863	40M1863	Ring - Snap	10	
29	RTC32114	TCU32114	Spacer - Spindle	5	

All original equipment manufacturers names and part numbers are used for identification purposes only, and we are in no way implying that our products are original equipment parts. Prices subject to change without notice.



# Replaces John Deere 9009A Rotary

## Mower Parts

Rotary Cutting Unit

Rotary Cutting Unit



Item No	R&R Part No.	OEM Part No.	Description	Qty Req	Order Quantity
30	<b>R170714</b>	E14814	Fitting - Pressure Relief	5	
31	<b>R32120-2</b>	M42702	Ring - Retaining	5	
32	<b>RTC27862</b>	TCU27862	Nut - Spindle	5	
33	<b>RTC32975</b>	TCU32975	Seal	5	
34	<b>RJD8194</b>	JD8194	Tapered Bearing Cone	10	
35	<b>RJD8230</b>	JD8230	Tapered Bearing Cup	10	
36	<b>RTC32974</b>	TCU32974	Seal	5	
37	<b>R471219</b>	471219, 471231, JD7759, JD7798	Zerk - Grease	20	
38	<b>RTCA25913</b>	TCA25913	Spacer - Axle	5	
39	<b>RUC32489</b>	TCU32112	Housing - Spindle	5	
40	<b>RTC39253</b>	TCU32113, TCU39253	Spindle - Blade	5	
41	<b>RM147138</b>	M147138	Washer - Belville	5	
42	<b>RTC27937</b>	TCU27937	Washer - Anti Friction	5	
43	<b>RH142234</b>	H142234	O - Ring	5	
44	<b>RAUC20746</b>	AUC19580, TCA25685	Spindle Assy	5	
45	<b>RUC10061</b>	UC10061	Disk Spring	10	
46	<b>RUC10057</b>	SU303558, UC10057	Thrust Washer - Hardened	5	
47	<b>RTC38614</b>	TCU38614	Roller - Front Gauge	10	
48	<b>RTC28104</b>	TCU28104	Bolt - Blade 10.9 Hardness	5	

All original equipment manufacturers names and part numbers are used for identification purposes only, and we are in no way implying that our products are original equipment parts. Prices subject to change without notice.



# Replaces John Deere 9009A Rotary Mower Parts

*Rotary Cutting Unit*  
*Rotary Cutting Unit*



Item No	R&R Part No.	OEM Part No.	Description	Qty Req	Order Quantity
49	<b>RTCU40213</b>	TCU40213	Arm - Rotary Deck Roller	10	
50	<b>RTCU40214</b>	TCU40214	Arm - Rotary Deck Roller	10	
51	<b>RTCU27014</b>	TCU27014	Bushing	20	
52	<b>R03M7187</b>	03M7187	Bolt - M8 x 35	40	

All original equipment manufacturers names and part numbers are used for identification purposes only, and we are in no way implying that our products are original equipment parts. Prices subject to change without notice.