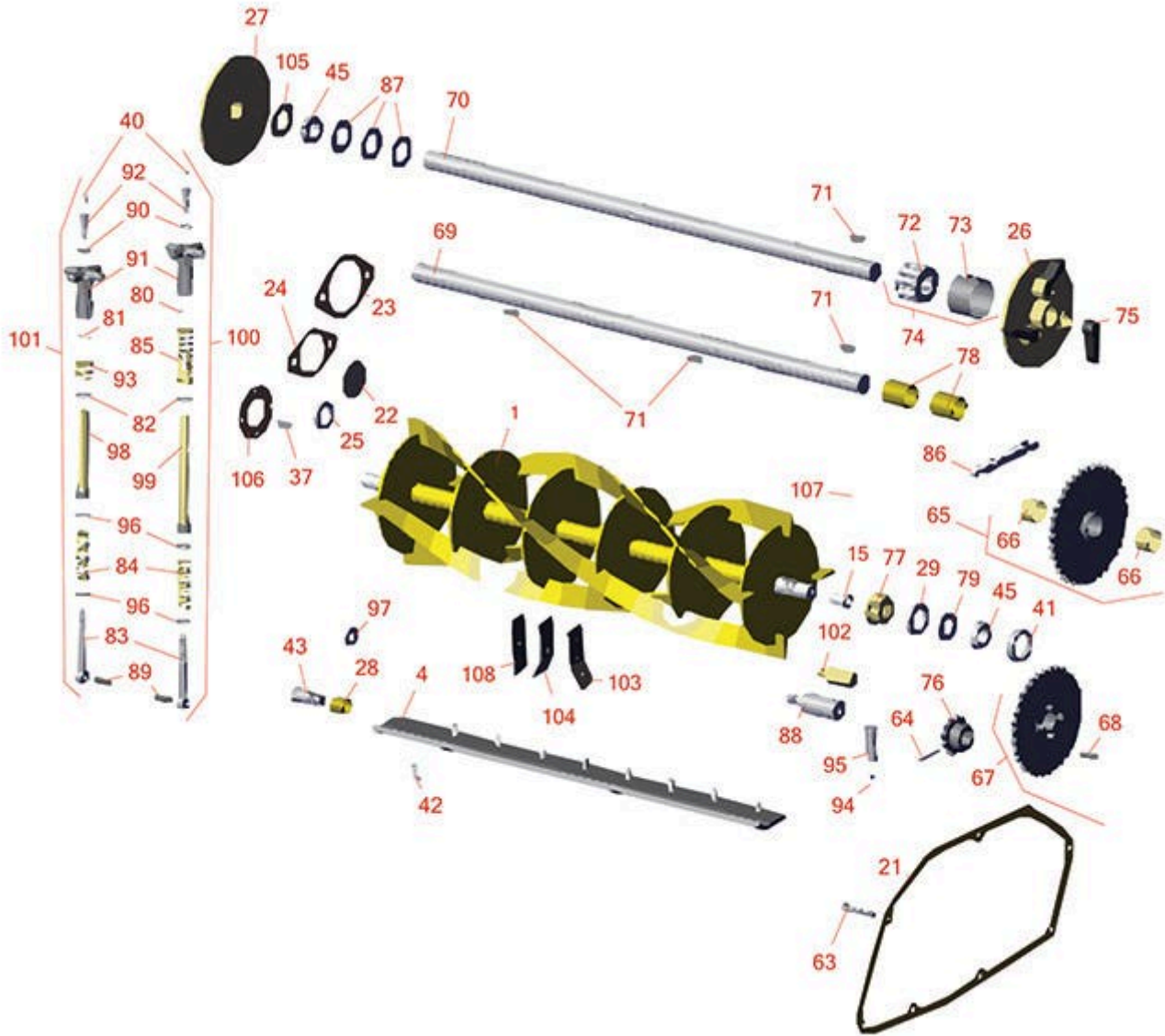




# Replaces Roseman Fairway Parts

Cutting Unit  
Reel & Bedknife



All original equipment manufacturers names and part numbers are used for identification purposes only, and we are in no way implying that our products are original equipment parts. Prices subject to change without notice.



# Replaces Roseman Fairway Parts

Cutting Unit  
Reel & Bedknife



Item No	R&R Part No.	OEM Part No.	Description	Qty Req	Order Quantity
---------	--------------	--------------	-------------	---------	----------------

### R&R Reels, Lifetime Guaranteed

1	<b>RAG-25</b>	AG-25	Reel - 6 Blade	1	
1	<b>RAG-28</b>	AG-28	Reel - 8 Blade	1	
1	<b>R34</b>	AR-34	Reel - 5 Blade	1	

*Tech Note: Ground Driven:*

1	<b>RAR126</b>	AR-115, AR-126	Reel - 6 Blade	1	
---	---------------	-------------------	----------------	---	--

*Tech Note: Ground Driven:*

1	<b>RAR87</b>	AR87	Reel - 4 Blade	1	
1	<b>R190655</b>		Reel - 5 Blade Hi-Cut	1	

### R&R Bedknives, Lifetime Guaranteed

4	<b>R190650</b>	114-0	Bedknife - Single Lip	1	
---	----------------	-------	-----------------------	---	--

### Other Parts Available

15	<b>RG-23</b>	G-23	Spline	2	
21	<b>R11-0</b>	11-0	Gasket - Cover	1	
22	<b>R21-0</b>	21-0	Gasket - Lapping Hole	1	
23	<b>R22-0</b>	22-0	Gasket - Fits R-38 Housing	1	
24	<b>R25-0</b>	25-0	Gasket - R-46 Housing	1	
25	<b>R152-0</b>	152-0	Seal - Grease	2	
26	<b>RR-39</b>	R-39	Retainer - Pawl LH	1	
27	<b>RR-40</b>	R-40	Retainer - Pawl RH	1	
28	<b>R125-0</b>	125-0	Bushing - Backing Bar	2	
28	<b>R125-0X</b>	125-0X	Bushing - Oversized For Bed Bar	2	

All original equipment manufacturers names and part numbers are used for identification purposes only, and we are in no way implying that our products are original equipment parts. Prices subject to change without notice.



# Replaces Roseman Fairway Parts

*Cutting Unit  
Reel & Bedknife*



Item No	R&R Part No.	OEM Part No.	Description	Qty Req	Order Quantity
29	<b>R12-0</b>	12-0	Seal - Reel	2	
37	<b>R57-0</b>	57-0	Key - Woodruff	1	
40	<b>R302-5</b>	173-0	Fitting - Grease	2	
41	<b>R302755</b>	151-0	Cup - Bearing	2	
42	<b>R190652</b>		Screw - Regular - 3/8-16 x 1	9	
42	<b>R190653</b>	56-0	Screw - Nyloc	9	
43	<b>R124-0</b>	124-0	Stud - Backing Bar w/Nyloc	2	
45	<b>R315914</b>	150-0	Tapered Bearing Cone	3	
63	<b>R70-0</b>	70-0	Bolt - Soc HD Cap 3/8-16 x 2-1/4	2	
64	<b>R50-0</b>	50-0	Pin - Cotter 3/16 x 2	1	
65	<b>RAR-35</b>	AR-35	Sprocket - Int. 37-16 Tooth	1	
66	<b>R81-0</b>	81-0	Bushing - Int. Sprocket	2	
67	<b>RAR-36</b>	AR-36	Sprocket - Drive 34 Tooth	1	
68	<b>R136-0</b>	136-0	Pin - Hardened Drive Sprocket	4	
69	<b>R213-0</b>	213-0	Shaft - Rubber Tire Drive	1	
70	<b>R113-0</b>	113-0	Shaft - Steel Drum Roller	1	
71	<b>R170-0</b>	170-0	Key - Drive Shaft	1	
72	<b>R91-0</b>	91-0	Bearing - Steel Drum Roller	2	
73	<b>R92-0</b>	92-0	Sleeve - Steel Drum Roller	2	
74	<b>RAR-18</b>	AR-18	Bearing - w/Sleeve	2	
75	<b>RR-18</b>	R-18	Pawl - Drive	6	
76	<b>R132-0</b>	132-0	Sprocket - Pinion 12 Tooth	1	

All original equipment manufacturers names and part numbers are used for identification purposes only, and we are in no way implying that our products are original equipment parts. Prices subject to change without notice.



# Replaces Roseman Fairway Parts

*Cutting Unit  
Reel & Bedknife*



Item No	R&R Part No.	OEM Part No.	Description	Qty Req	Order Quantity
77	<b>RR-48</b>	R-48	Collar - Bearing Adj.	1	
78	<b>R2-0</b>	2-0	Bearing - Drive Shaft	4	
79	<b>R1-0</b>	1-0	Washer - Seal Retainer	2	
80	<b>R102-0</b>	102-0	Pin - Drive Lock	2	
81	<b>R104-0</b>	104-0	Pin - Roll 3/16 x 1	2	
82	<b>R105-0</b>	105-0	Washer - Roller	1	
83	<b>R107-0</b>	107-0	Eyebolt	2	
84	<b>R108-0</b>	108-0	Spring - Lower - Bed Bar	2	
85	<b>R122-0</b>	122-0	Spring - Upper Bed Bar Adj	2	
86	<b>R138-0</b>	138-0	Chain - Drive No. 50	2	
87	<b>R179-0-A</b>	179-0-A	Washer - 1/32 Roller Spacer	0	
87	<b>R179-0-B</b>	179-0-B	Washer - 1/16 Roller Spacer	0	
87	<b>R179-0-C</b>	179-0-C	Washer - 1/8 Roller Spacer	0	
88	<b>R79-0</b>	79-0	Stud - Intermediate Spkt	1	
89	<b>R97-0</b>	97-0	Pin - Roll Eye Bolt	2	
90	<b>R187-0</b>	187-0	Washer - Flat 7/16 SAE	2	
91	<b>RR-20</b>	R-20	Handle - Adjusting	2	
92	<b>R209-0</b>	100-0, 209-0	Bolt - w/Grease Fitting	2	
93	<b>RC-213</b>	C-213	Spring - Upper Bed Bar Hydra	2	
94	<b>R29-0</b>	29-0	Spring - Handle Stop	1	
95	<b>R30-0</b>	30-0	Clevis Pin - 5/8 x 2	1	
96	<b>R43-0</b>	43-0	Washer - Eyebolt	4	

All original equipment manufacturers names and part numbers are used for identification purposes only, and we are in no way implying that our products are original equipment parts. Prices subject to change without notice.



# Replaces Roseman Fairway Parts

Cutting Unit  
Reel & Bedknife



Item No	R&R Part No.	OEM Part No.	Description	Qty Req	Order Quantity
97	<b>R76-0</b>	76-0	Washer - Front Tie Rod	6	
98	<b>RAC-212</b>	AC-212	Sleeve - Adjuster 5-1/2	2	
99	<b>RAR-11</b>	AR-11	Sleeve - Bed Bar Adjustment	2	
99	<b>RAR-13</b>	AR-13	Sleeve - Adjustment Hi-Cut	2	
100	<b>RAR-30</b>	AR-30	Adjuster - Assy Fits 7 Reels	2	
100	<b>RAR-38</b>	AR-38	Adjuster - Assy Fits 9 Reels	2	
101	<b>RAG-96</b>	AG-96	Adjuster - Assy Fits Hydra-Gang	2	
102	<b>R201-0</b>	201-0	Stud - Backlapping	1	
103	<b>RG-1526</b>	G-1526	Pulverizer Blade - RH	54	
104	<b>RG-1527</b>	G-1527	Pulverizer Blade - LH	54	
105	<b>R153-0</b>	153-0	Cap - Thrust Steel Roller Drive	2	
106	<b>RG-32</b>	G-32	Gasket - Hyd Unit Bearing Housing	1	
108	<b>RG78</b>	G78	Verti-Cut Blade - 1-1/8 Hole Cnt	54	

*Tech Note: High Carbon heat treated steel:*

All original equipment manufacturers names and part numbers are used for identification purposes only, and we are in no way implying that our products are original equipment parts. Prices subject to change without notice.