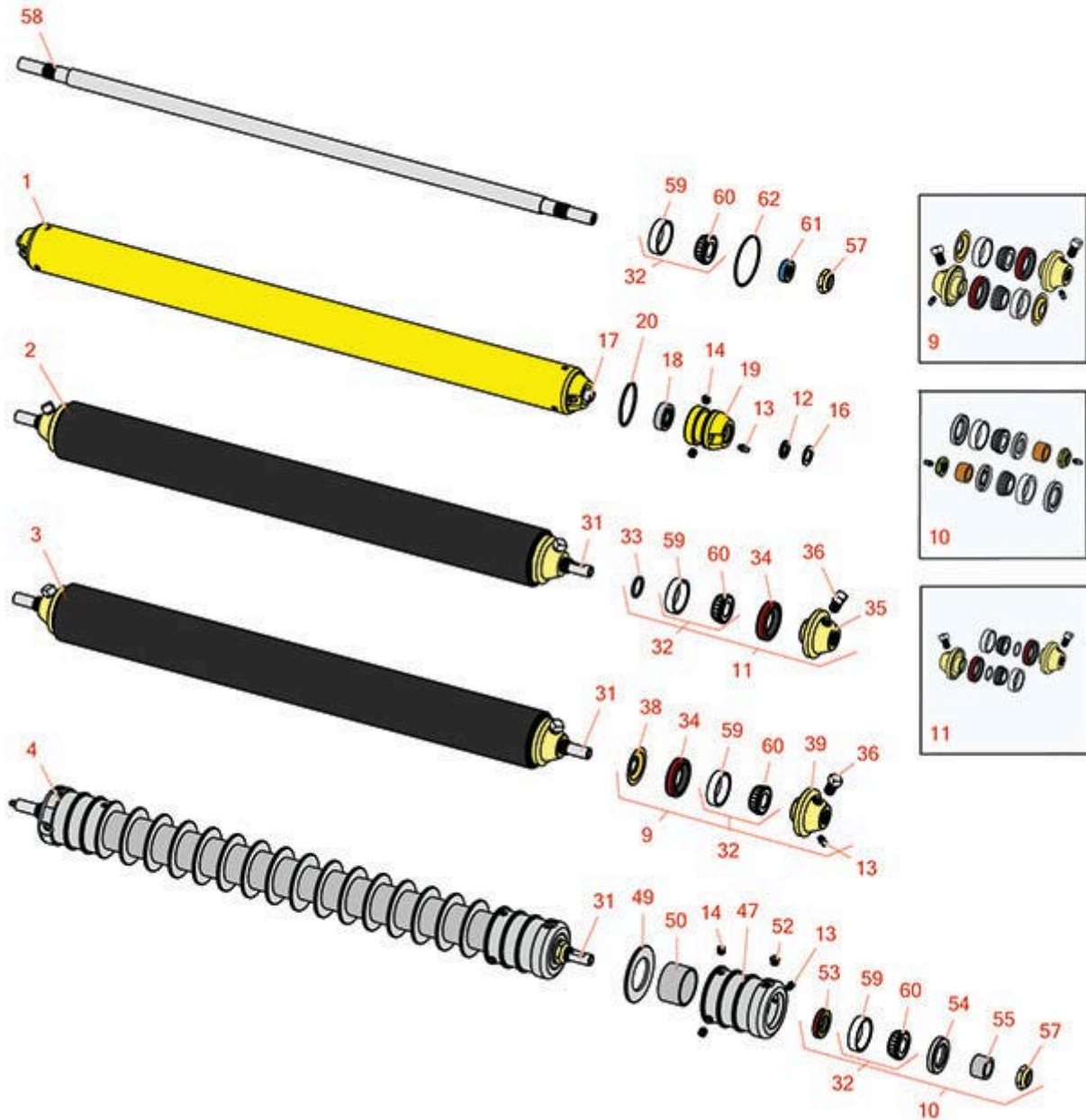




Replaces Roseman Fairway Parts

Cutting Unit
Rollers



All original equipment manufacturers names and part numbers are used for identification purposes only, and we are in no way implying that our products are original equipment parts. Prices subject to change without notice.



Replaces Roseman Fairway Parts

Cutting Unit
Rollers



Item No	R&R Part No.	OEM Part No.	Description	Qty Req	Order Quantity
---------	--------------	--------------	-------------	---------	----------------

R&R Rollers

1	RAG-40	AG-40	Roller - Fits Hyd Unit	1	
---	---------------	-------	------------------------	---	--

Tech Note: This smooth steel roller uses ball bearings.:

2	R700520		Roller - Smooth Tubular Steel Oil Filled	1	
---	----------------	--	--	---	--

Tech Note: Constructed with a through shaft, this oil filled heavy-duty roller uses tapered bearings for extended life.:

3	R700525		Roller - Smooth Tubular Steel	1	
---	----------------	--	-------------------------------	---	--

Tech Note: Constructed with a through shaft, this heavy duty roller uses greasable tapered bearings for extended life.:

4	R700526		Roller - Grooved Repairable Steel	1	
---	----------------	--	-----------------------------------	---	--

Tech Note: Constructed with a through shaft, this heavy duty roller uses greasable tapered bearings for extended life.:

Overhaul Kits

9	R700505		Conversion Kit - Roller	1	
---	----------------	--	-------------------------	---	--

Tech Note: Includes: 2 each: R254-78 Bearing Cones, R254-79 Bearing Cups, R328062 Seals, R412063 Square Head Set Screws, R700501 Roller Ends & R700502 Grease Retainers.:

10	R100135		Overhaul Kit - Roller	0	
----	----------------	--	-----------------------	---	--

Tech Note: Includes 2 ea.:R302-5 Grease Fittings, R253-122 Seals, R253-117 Seals, R150674 Wear Sleeves, R254-78 Bearings, R254-79 Bearing Cups, & R3296-15 Locknuts:

11	R100140		Overhaul Kit - Oil Filled Roller	0	
----	----------------	--	----------------------------------	---	--

Tech Note: Includes 2 ea.: R500574 Roller Collar, R500534 Bearing Cup & Cone, R459007 O-ring, R328062 Seal, R412063 Screw:

Other Parts Available

12	R148-0	148-0	Seal - Roller	2	
----	---------------	-------	---------------	---	--

13	R302-5	173-0	Fitting - Grease	2	
----	---------------	-------	------------------	---	--

14	R150691	182-0	Screw - Set Nyloc 3/8-16 x 3/8	6	
----	----------------	-------	--------------------------------	---	--

All original equipment manufacturers names and part numbers are used for identification purposes only, and we are in no way implying that our products are original equipment parts. Prices subject to change without notice.



Replaces Roseman Fairway Parts

*Cutting Unit
Rollers*



Item No	R&R Part No.	OEM Part No.	Description	Qty Req	Order Quantity
16	R105-0	105-0	Washer - Roller	2	
17	RG-42	G-42	Shaft - Roller	1	
18	RG-43	G-43	Bearing - Roller	2	
19	RG-44	G-44	Housing - Roller	2	
20	RG-57	G-57	O-Ring - Roller Housing	2	
31	R700521		Shaft - 3 Dia Roller	1	
32	R500534		Bearing - with Cup	2	
33	R459007		O-Ring - Roller	2	
34	R328062		Seal - Roller	2	
35	R500574		Collar - Roller	2	
36	R412063		Screw - Sq. HD. Set	2	
38	R700502		Retainer - Grease	2	
39	R700501		Roller End - Regreasable	2	
47	R150675		Roller - End - 3 Threaded	2	
49	R150673		Washer - 3 Repairable Roller	15	
50	R150676		Spacer - 2-3/4 Dia x 1-1/4 L	16	
52	R170714		Fitting - Pressure Relief	2	
53	R253-122		Seal	2	
54	R253-117		Seal - Outer Triple Lip	2	
55	R150674		Sleeve - Wear 3/4 Plated	2	
57	R3296-15	G-371	Locknut - 3/4-16 Nylon Jam	2	
58	RG-364	G-364	Shaft - Roller - 7/8 Dia.	1	

All original equipment manufacturers names and part numbers are used for identification purposes only, and we are in no way implying that our products are original equipment parts. Prices subject to change without notice.



Replaces Roseman Fairway Parts

Cutting Unit
Rollers



Item No	R&R Part No.	OEM Part No.	Description	Qty Req	Order Quantity
59	R254-79	G-372	Cup - Bearing	2	
<i>Tech Note: Use R254-79M installation mandrel to properly install race.:</i>					
60	R254-78	G-373	Tapered Bearing Cone	2	
61	RG-367	G-367	Seal - Fits O.E.M. Roller	2	
62	RG-366	G-366	O-Ring	2	

All original equipment manufacturers names and part numbers are used for identification purposes only, and we are in no way implying that our products are original equipment parts. Prices subject to change without notice.