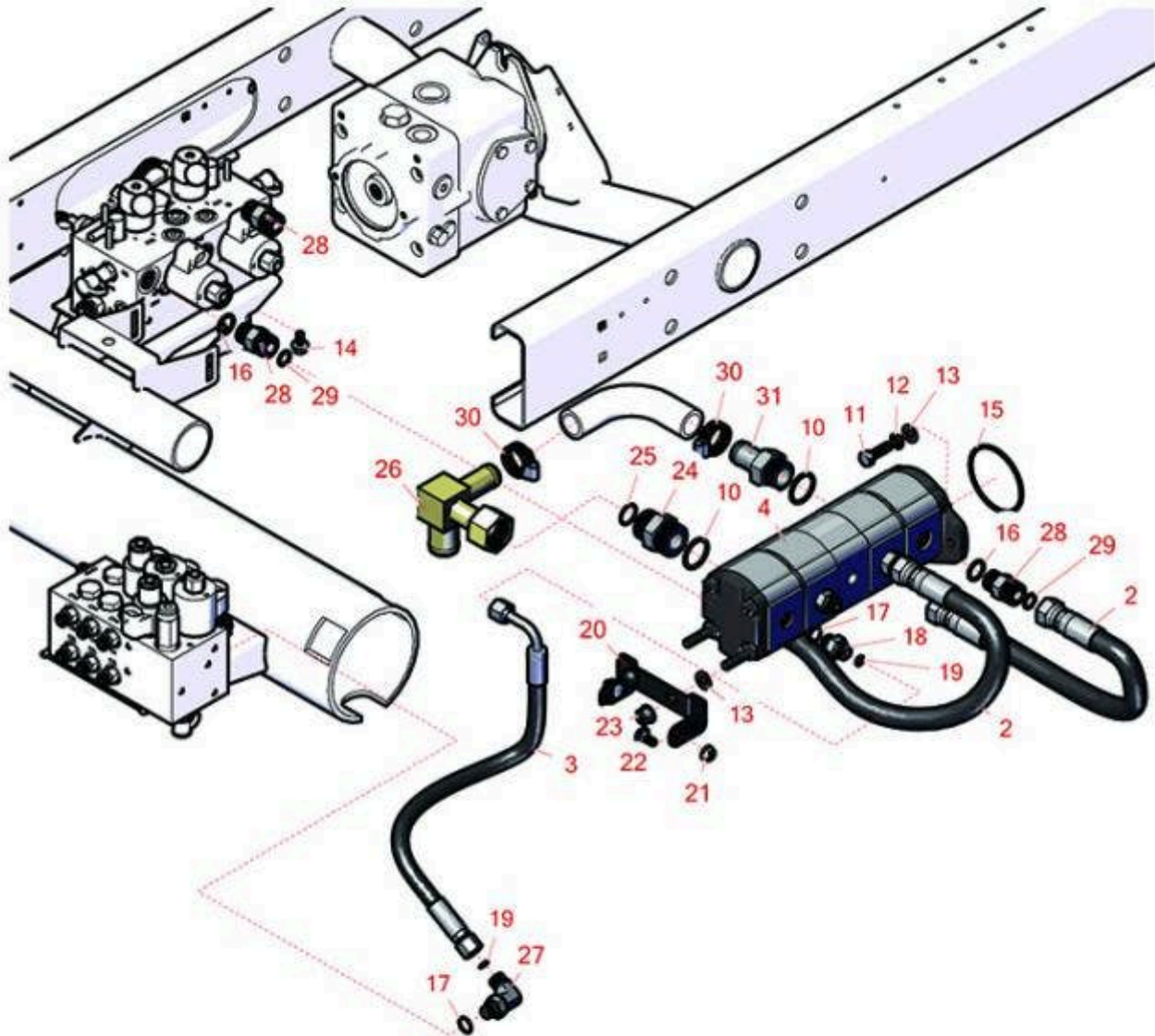




# Replaces R&R Products Reel Max 544D

## Parts

Traction Unit  
Gear Pump



All original equipment manufacturers names and part numbers are used for identification purposes only, and we are in no way implying that our products are original equipment parts. Prices subject to change without notice.



# Replaces R&R Products Reel Max 544D

## Parts

Traction Unit

Gear Pump



Item No	R&R Part No.	OEM Part No.	Description	Qty Req	Order Quantity
---------	--------------	--------------	-------------	---------	----------------

### Hoses

2	R108-1686		Hydraulic Hose Assy	2	
3	R107-1135		Hydraulic Hose Assy	1	

### Gauges and Controls

4	R105-7576		Gear Pump Assy	1	
---	-----------	--	----------------	---	--

*Tech Note: ReelMax 544D:*

### Other Parts Available

10	R237-146	R340-146	O-Ring	2	
11	R3274-1		Bolt - 3/8-16 x 1 1/4 Soc HD Cap	2	

12	R3254-6	446142, R01-166-0010, R01-166-0280, R01-166-0610, R12H304, R3253-5, R3254-18, R3290-223, R446140, R446142, R48-9370	Washer - Lock 3/8	2	
----	---------	---	-------------------	---	--

All original equipment manufacturers names and part numbers are used for identification purposes only, and we are in no way implying that our products are original equipment parts. Prices subject to change without notice.



# Replaces R&R Products Reel Max 544D

## Parts

*Traction Unit*

*Gear Pump*



Item No	R&R Part No.	OEM Part No.	Description	Qty Req	Order Quantity
13	R453011	3256-24, 453011, R01-166-0100, R01-166-0120, R01-166-0270, R01-166-0500, R01-166-0600, R01-166-0620, R132-4593, R237-12, R24-10-AD, R24-11-AD, R24-11-BD, R24-12-AD, R24-12-BD, R30-9310, R32-8190, R3256-24, R3256-3, R3256-36, R3256-4, R47-9950	Washer - Flat 3/8 SAE Y/Zinc	4	
14	R3234-14	R3234-23	Bolt - Hex Serrated Washer HD	3	
15	R237-161		O-Ring	1	
16	R237-80	R327-80	O-Ring	4	
17	R237-79		O-Ring	3	
18	R340-3		Hydraulic Fitting - Adapter Connector	2	
19	R237-22	R107-8844, R232-72, R237-78	O-Ring	3	
20	R108-1801-01		Bracket-Support - Pump	1	
21	R104-8300	R119-4041	Locknut - 5/16-18 Flanged Y/Zinc	2	
22	R3230-1	R01-173-0506, R3230-20, R900037P	Bolt - Carriage 5/16-18 x 3/4	2	

All original equipment manufacturers names and part numbers are used for identification purposes only, and we are in no way implying that our products are original equipment parts. Prices subject to change without notice.



# Replaces R&R Products Reel Max 544D

## Parts

*Traction Unit*

*Gear Pump*



Item No	R&R Part No.	OEM Part No.	Description	Qty Req	Order Quantity
23	<b>R103-9511</b>		Nut - Lock	2	
24	<b>R104-3797</b>		Hydraulic Fitting - Striaght	1	
25	<b>R340-65</b>	R6815-002	O-Ring	1	
26	<b>R108-1672</b>		Manifold-Tube	1	
27	<b>R340-18</b>		Hydraulic Fitting	1	
28	<b>R340-7</b>		Adapter	4	
29	<b>R237-65</b>		O-Ring	4	
30	<b>R2412-34</b>	R31-0120	Clamp - Hose .75-1.5	2	
<i>Detail Description: Stainless steel hose clamp with 5/16" slotted hex head, heat treated carbon steel, plated with zinc plus trivalent chromate for long lasting protection.:</i>					
31	<b>R354-78</b>		Connector-Hose	1	

All original equipment manufacturers names and part numbers are used for identification purposes only, and we are in no way implying that our products are original equipment parts. Prices subject to change without notice.