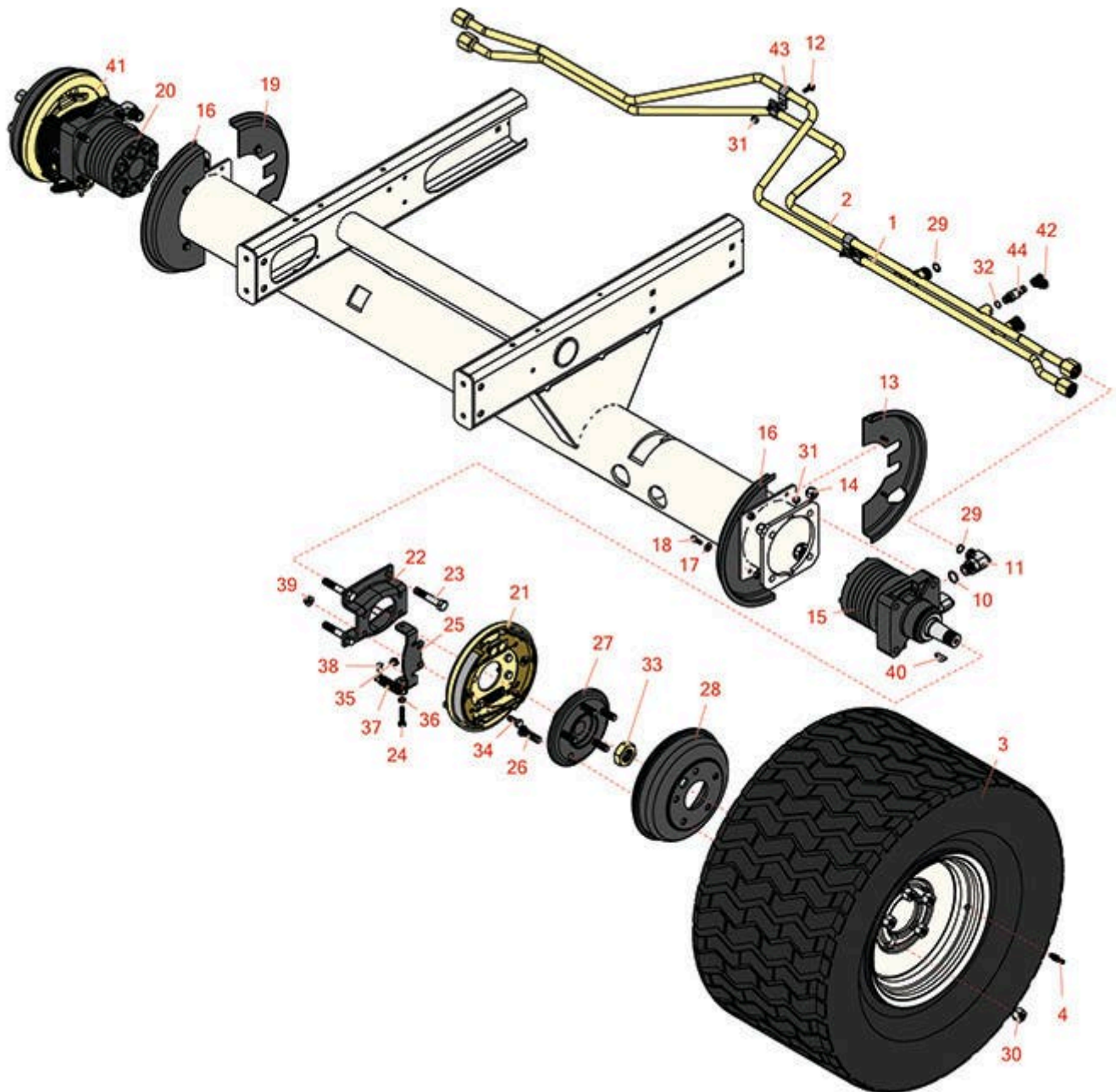




Replaces R&R Products Reel Max 744D

Parts

Traction Unit
Front Wheel



All original equipment manufacturers names and part numbers are used for identification purposes only, and we are in no way implying that our products are original equipment parts. Prices subject to change without notice.



Replaces R&R Products Reel Max 744D

Parts

Traction Unit
Front Wheel



Item No	R&R Part No.	OEM Part No.	Description	Qty Req	Order Quantity
---------	--------------	--------------	-------------	---------	----------------

Hoses

1	R108-7632		Tube Assy	1	
2	R108-7633		Tube Assy	1	

Tires

0	TIRES		Click Here to View Complete Tire Selection	0	
3	RCT529386		Tire - 26.5x14.00-12 Nhs (4 Ply) Carlisle Ultra Trac	2	

Detail Description: The Carlisle Ultra Trac tire is the ideal choice for specialized applications that prioritize high flotation and turf preservation. With its wide, flat footprint, reduced void in the tread, low ground pressure, good traction, and even pressure distribution, this tire delivers exceptional turf protection and performance. Whether you're maintaining golf courses or engaging in grounds maintenance, the Carlisle Ultra Trac tire ensures optimal turf preservation and reliable operation.:

4	R232-27	R232-31, R360111	Stem - Valve w/ Cap	2	
---	---------	---------------------	---------------------	---	--

Other Parts Available

10	R237-80	R327-80	O-Ring	4	
11	R340-17		No 10 Male Orfs x No 10 Male Orb	4	
12	R3234-4		Bolt - Hx Ser Was HD 1/4-20 x 3/4	4	
13	R110-0951		Shiel D- Wheel - Rear LH	1	
14	RF5003	3296-23, R32127-29, R32131-5, R32132-5, R3296-23, R64229-05, RZS04021-07	Locknut - ESNA 1/2-13	8	
15	R106-3874		Hydraulic Motor - Wheel LH	1	

All original equipment manufacturers names and part numbers are used for identification purposes only, and we are in no way implying that our products are original equipment parts. Prices subject to change without notice.



Replaces R&R Products Reel Max 744D

Parts

Traction Unit
Front Wheel



Item No	R&R Part No.	OEM Part No.	Description	Qty Req	Order Quantity
16	R110-0950		Shield - Brake - Front	2	
17	R453009	3256-3, R01-166-0400, R24-10-BD, R24-9-AD, R24H1136, R32-9650, R3256-2, R3256-23, R3256-67, R3290-217, R3556-3, R4-2390, R452006, R7-0152	Washer - Flat 5/16 SAE	8	
18	R321-4	400108, R01-150-1030, R01-178-0406, R20-3-AGD, R3222-1, R400108	Bolt - Hex HD 1/4-20 x 3/4	8	
19	R110-8878		Shield-Wheel - Rear RH	1	
20	R106-3875		Hydraulic Motor - Wheel RH	1	
21	R110-8872		Brake Assy - LH	2	
22	R110-5343-03		Bracket-Brake	2	
23	R325-11	R01-150-0330, R20-92-AGD	Bolt - Hex HD 1/2-13 x 2-3/4	8	
24	R322-7	R01-150-0750, R01-150-0760, R01-178-0512, R20-28-AD, R20-28-AGD, R3223-4	Bolt - Hex HD 5/16-18 x 1-1/2	2	
25	R117-0203-03		Bracket- Brake Spring	2	
26	R10-6830		Stud - 1/2-20 x 1 3/4	10	

All original equipment manufacturers names and part numbers are used for identification purposes only, and we are in no way implying that our products are original equipment parts. Prices subject to change without notice.



Replaces R&R Products Reel Max 744D

Parts

Traction Unit
Front Wheel



Item No	R&R Part No.	OEM Part No.	Description	Qty Req	Order Quantity
27	R110-9046	R106-3605	Hub - Wheel	2	
28	R150878		Drum - Brake - Reel Max	2	
29	R237-65		O-Ring	6	
30	R242-50		Nut - 1/2-20 Wheel	10	
31	R301504	R32127-24, R32146-17, R3296-16, R3296-42, R915661P, RM40333	Locknut - ESNA 1/4-20	12	
32	R237-42	R31-4160, R339897	O-Ring	2	
33	R26-3790		Nut - Hex - Wheel Motor 1-20	2	
34	R323-6	323-6, R01-150-0010, R01-178-0608, R20-47-AD, R20-47-AGD, R3224-2, R49-3510, R908034P, R908332	Bolt - Hex HD 3/8-16 x 1 GR5 YZ	8	
35	R104-8300	R119-4041	Locknut - 5/16-18 Flanged Y/Zinc	2	
36	RP457-2	R01-191-0518, R22-12-AJK, R3218-2, R513299, RP3015-2	Nut - Jam 5/16-18 Zinc	2	
37	R87-4020		Spring - Extension	2	
38	R283-62		Pin - Clevis 5/16 x 3/4	2	

All original equipment manufacturers names and part numbers are used for identification purposes only, and we are in no way implying that our products are original equipment parts. Prices subject to change without notice.



Replaces R&R Products Reel Max 744D

Parts

*Traction Unit
Front Wheel*



Item No	R&R Part No.	OEM Part No.	Description	Qty Req	Order Quantity
39	R3296-39	3296-39, R32127-25, R32128-36, R3296-17, R3296-22, R915663P, R99-7443	Locknut - 3/8-16 Nylon	8	
40	R3257-42		Key - Woodruff 5/16 x 1	2	
41	R110-8871		Brake Assy - RH	1	
42	R354-79		Cap-Dust	2	
43	R2412-134		R-Clamp	4	
44	R59-7410		Tip-Nipple	2	

All original equipment manufacturers names and part numbers are used for identification purposes only, and we are in no way implying that our products are original equipment parts. Prices subject to change without notice.