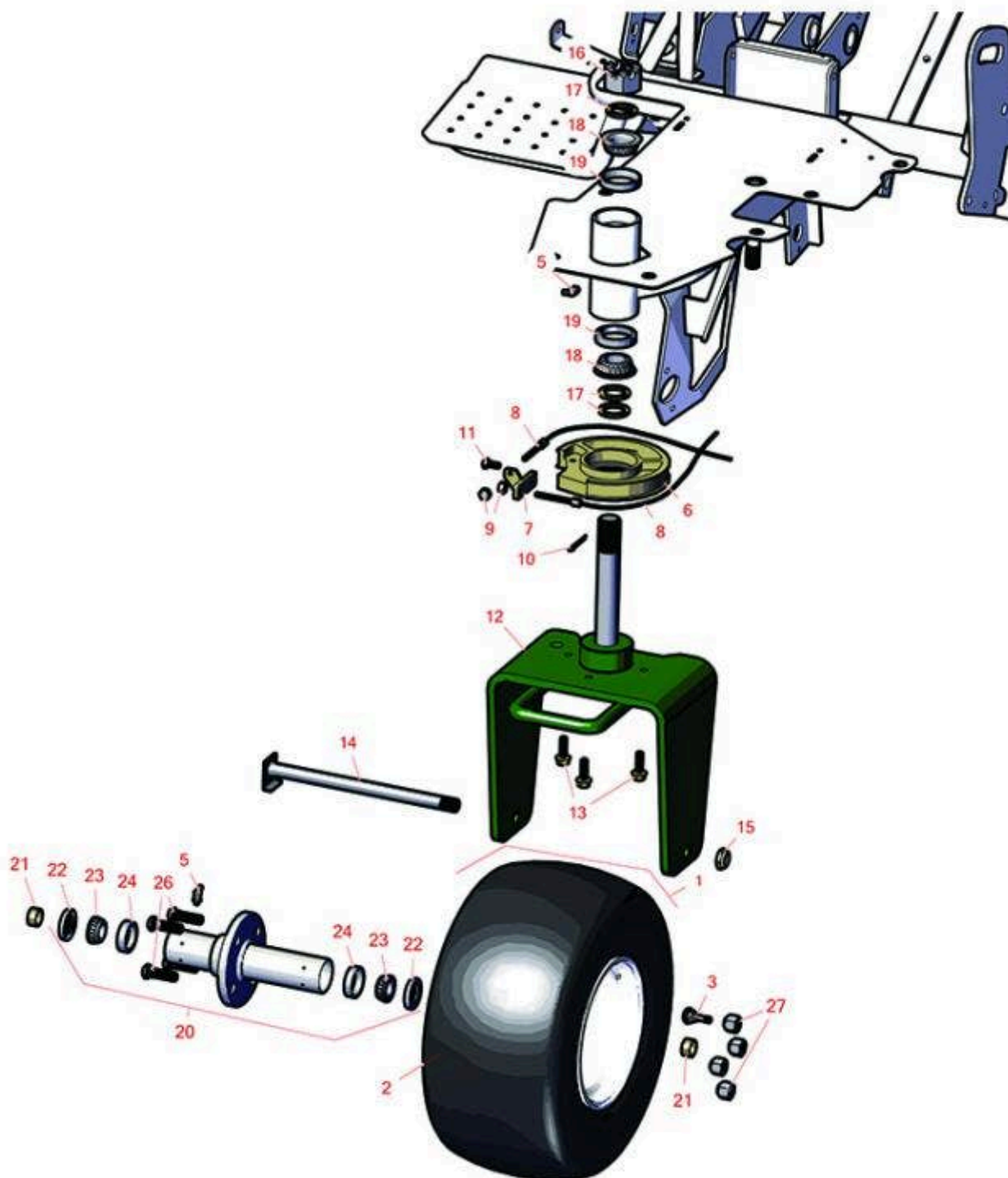


Replaces R&R Products Versa-Green

1860 Parts

Traction Unit

Rear Wheel



All original equipment manufacturers names and part numbers are used for identification purposes only, and we are in no way implying that our products are original equipment parts. Prices subject to change without notice.



Replaces R&R Products Versa-Green

1860 Parts

Traction Unit

Rear Wheel



Item No	R&R Part No.	OEM Part No.	Description	Qty Req	Order Quantity
---------	--------------	--------------	-------------	---------	----------------

Tires

0	TIRES		Click Here to View Complete Tire Selection	0	
1	R150314	R150320	Tire & Wheel - 18x9.50-8 (2 Ply) Carlisle Smooth	1	
2	RCT510981		Tire - 18 - 9.50 x 8 (4 Ply) Carlisle Smooth	1	
2	RTK958-4SM-I	RTK958-2SM-I	Tire - 18x9.50-8 (4 Ply) Kenda Smooth	1	
3	R232-27	R232-31, R360111	Stem - Valve w/ Cap	1	

Other Parts Available

5	R700414	R302-11, R302-4, R32-8170	Zerk - Grease 1/4-28 45 Deg	2	
6	R95-5955-01	R95-5955	Drum - Steering	1	
7	R95-5956		Cable Anchor Assy	1	
8	R95-5965		Cable - Steering Fits 3050	1	
9	R444754	R000210	Locknut - 5/16-24 Center	2	
10	R3272-37		Pin - Cotter 1/4 x 2-1/2	1	
11	R322-3	R01-150-1420, R01-178-0506, R09109, R20-24-AD, R20-24-AGD, R48-9270, R513339, R908017P, RB311201	Bolt - Hex HD 5/16-18 x 3/4	1	
12	R95-5952G		Caster Fork - Green	1	
13	R3234-24	R3234-8, R66-9301	Bolt - Hex Ser Was HD 3/8-16 x 1-1/4	3	

All original equipment manufacturers names and part numbers are used for identification purposes only, and we are in no way implying that our products are original equipment parts. Prices subject to change without notice.



Replaces R&R Products Versa-Green

1860 Parts

Traction Unit

Rear Wheel



Item No	R&R Part No.	OEM Part No.	Description	Qty Req	Order Quantity
14	R5-3934		Bolt - Steering Caster Fork	1	
15	R3296-15	367029, R1503473, R32118-5, R32127-23, R32127-47, R367029, R445748, RG-371, RN101345	Locknut - 3/4-16 Nylon Jam	1	
16	R32136-9		Nut - 1-1/4-12 Slotted	1	
17	R18-6320		Washer - Steering Fork	4	
18	R254-70	R115-9472	Tapered Bearing Cone - w/Seal	2	
19	R254-61	R01-103-0090, R115-9471, R254-69, R32-8140, R92-0611, R93-4850	Cup	2	
20	R72-9710		Hub Assy - Rear Tire	1	
21	R74-3730	R217-96	Spacer	2	
22	R253-111	R253-108, RE1029	Seal	2	
23	R254-78	R01-102-0060, R01-102-0130, R1-633585, R255815, R32-7790, R32-9580, R385174, R4121174, R4135152, R70030-50302, R93-4813, RB4512, RG-373, RJD8188	Tapered Bearing Cone	2	

All original equipment manufacturers names and part numbers are used for identification purposes only, and we are in no way implying that our products are original equipment parts. Prices subject to change without notice.



Replaces R&R Products Versa-Green

1860 Parts

Traction Unit

Rear Wheel



Item No	R&R Part No.	OEM Part No.	Description	Qty Req	Order Quantity
24	R254-79	R01-103-0060, R01-103-0130, R1-633584, R252-106, R255820, R32-7800, R32-9590, R4121175, R70030-50301, R808088, RB4015, RG-372, RJD8226	Cup - Bearing	2	
<i>Detail Description: Use R254-79M installation mandrel to properly install race.:</i>					
26	R85-6540		Stud - Drive 1/2-20 x 2	4	
27	R242-50		Nut - 1/2-20 Wheel	4	

All original equipment manufacturers names and part numbers are used for identification purposes only, and we are in no way implying that our products are original equipment parts. Prices subject to change without notice.