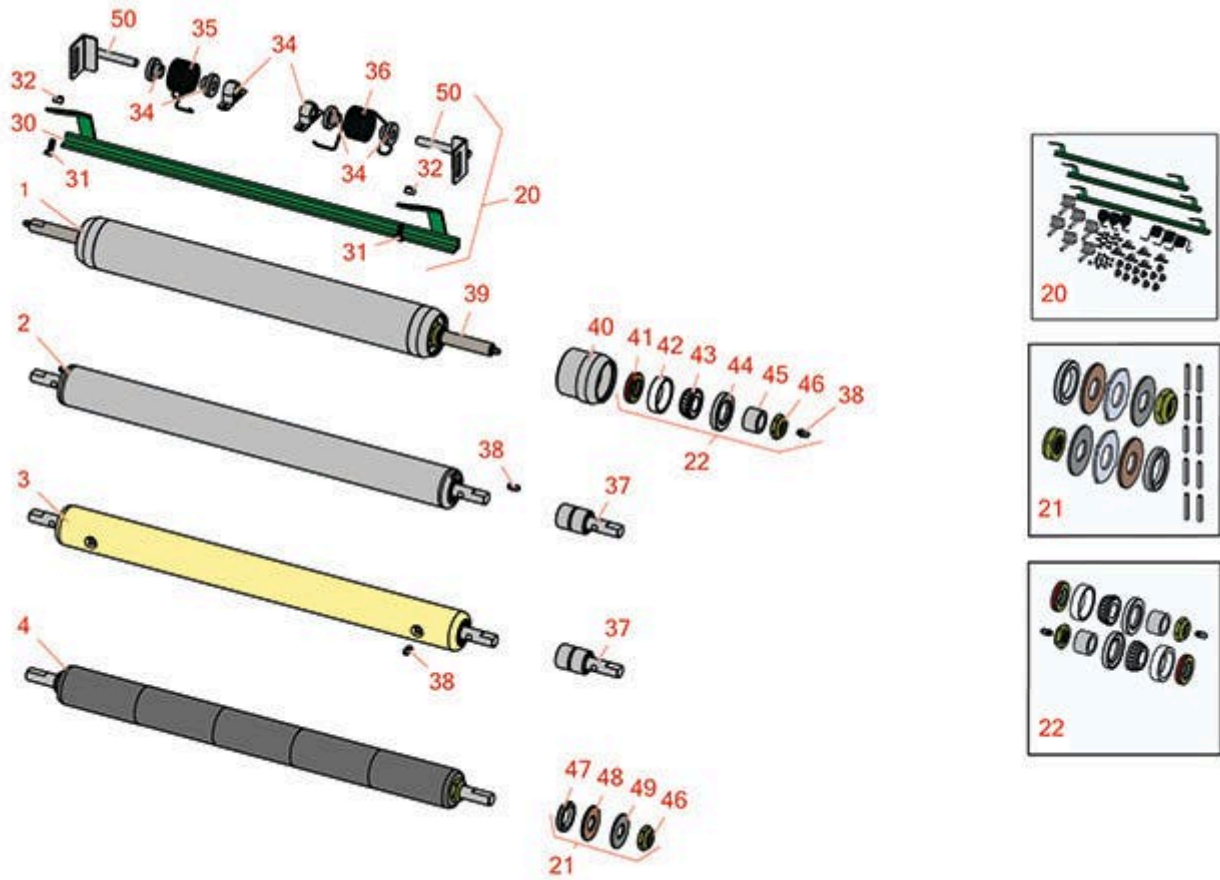




# Replaces R&R Products Versa-Green 1860PS Parts Rear Rollers



All original equipment manufacturers names and part numbers are used for identification purposes only, and we are in no way implying that our products are original equipment parts. Prices subject to change without notice.



# Replaces R&R Products Versa-Green 1860PS Parts Rear Rollers



Item No	R&R Part No.	OEM Part No.	Description	Qty Req	Order Quantity
---------	--------------	--------------	-------------	---------	----------------

## R&R Rear Rollers

1	<b>R150692</b>		Roller - Smooth Heavy Duty Tubular Steel	0	
---	----------------	--	--	---	--

*Tech Note: Constructed with a through shaft, this heavy duty roller uses tapered bearings for extended life.:*

2	<b>R21-8450</b>		Roller - Smooth Tubular Steel	0	
---	-----------------	--	-------------------------------	---	--

*Tech Note: Constructed with greasable "water-pump" style bearings. :*

3	<b>R150300</b>		Roller - Smooth Solid Steel	0	
---	----------------	--	-----------------------------	---	--

*Tech Note: Machined from solid steel, this heavy weight roller uses greasable "water-pump" style bearings.:*

4	<b>R150341</b>		Roller - Smooth UHMW Polyethylene	0	
---	----------------	--	-----------------------------------	---	--

*Tech Note: Machined from solid UHMW, this low maintenance roller uses a 1" solid stainless steel shaft and requires no grease. UHMW material prevents build-up of debris.:*

## Overhaul Kits

20	<b>R53-9240G</b>		Scrapers Kit - Rear Roller SET/3	1	
----	------------------	--	----------------------------------	---	--

21	<b>R100136</b>		Overhaul Kit - Roller	0	
----	----------------	--	-----------------------	---	--

*Tech Note: Includes 2 ea.: R150674 Wear Sleeves, R253-152 Seals, R253-117 Seals, R254-78 Bearings, R254-79 Bearing Cups, R3296-15 Locknuts & R302-5 Grease Fittings:*

22	<b>R101395</b>		Overhaul Kit - UHMW Roller	0	
----	----------------	--	----------------------------	---	--

*Tech Note: Fits all R&R 2" Dia. Black UHMW Polyethylene Rollers. Includes 10 ea.: R150322 Roll Pins; 2 ea.: R3296-15 Locknuts, R150347T Teflon Seals, R150333 Thrust Washers, & R150334A Bronze Thrust Washers:*

## Other Parts Available

30	<b>R42-4800G</b>		Bar - Scraper Rear Roller-Green	1	
----	------------------	--	---------------------------------	---	--

All original equipment manufacturers names and part numbers are used for identification purposes only, and we are in no way implying that our products are original equipment parts. Prices subject to change without notice.



# Replaces R&R Products Versa-Green 1860PS Parts

Rear Rollers



Item No	R&R Part No.	OEM Part No.	Description	Qty Req	Order Quantity
31	<b>R400106</b>	R321-3, R513315, R908002P	Bolt - Hex HD 1/4-20 x 5/8	4	
32	<b>R32152-4</b>	444708, R444708	Locknut - 1/4-20 All Metal	4	
33	<b>R256-239</b>		Bearing	2	
34	<b>R19-9560</b>		Spacer - Spring	4	
35	<b>R19-9540</b>		Spring - Torsion LH	1	
36	<b>R19-9550</b>		Spring - Torsion RH	1	
37	<b>R21-8430</b>	R150301	Bearing - Roller	2	
38	<b>R302-5</b>	R173-0, R21-6010, R255825, R302-37, R302-47, R302-57, R302-58, R302-6, R31-0300, R32-9660, R471214, R471223, R471226, R60-0800, R62-3880, R92-4181, RJD7797, RJD7842, RJD7844, RM0004	Fitting - Grease	2	
39	<b>R150693</b>		Shaft - HD Rear Roller	1	
40	<b>R61-0380</b>		Roller End - Cap Solid	2	
41	<b>R253-152</b>	R253-116, R3001656	Seal - Inner Roller	2	

All original equipment manufacturers names and part numbers are used for identification purposes only, and we are in no way implying that our products are original equipment parts. Prices subject to change without notice.



# Replaces R&R Products Versa-Green 1860PS Parts

Rear Rollers



Item No	R&R Part No.	OEM Part No.	Description	Qty Req	Order Quantity
42	<b>R254-79</b>	R01-103-0060, R01-103-0130, R1-633584, R252-106, R255820, R32-7800, R32-9590, R4121175, R70030-50301, R808088, RB4015, RG-372, RJD8226	Cup - Bearing	2	
<i>Tech Note: Use R254-79M installation mandrel to properly install race.:</i>					
43	<b>R254-78</b>	R01-102-0060, R01-102-0130, R255815, R32-7790, R32-9580, R385174, R4121174, R4135152, R70030-50302, R93-4813, RB4512, RG-373, RJD8188	Tapered Bearing Cone	2	
44	<b>R253-117</b>	R253-165, R255805, R3004882	Seal - Outer Triple Lip	2	
45	<b>R150674</b>		Sleeve - Wear 3/4 Plated	2	
46	<b>R3296-15</b>	367029, R1503473, R32118-5, R32127-23, R32127-47, R367029, R445748, RG-371, RN101345	Locknut - 3/4-16 Nylon Jam	2	

All original equipment manufacturers names and part numbers are used for identification purposes only, and we are in no way implying that our products are original equipment parts. Prices subject to change without notice.



# Replaces R&R Products Versa-Green 1860PS Parts

*Rear Rollers*



Item No	R&R Part No.	OEM Part No.	Description	Qty Req	Order Quantity
47	<b>R150347T</b>	R150347	Seal - Nonstick Lip	2	
48	<b>R150333</b>	R150447	Washer - Flat Keyed Outer SS	2	
49	<b>R150334A</b>		Washer - Thrust SAE660 Bronze	2	
50	<b>R53-9250</b>		Bracket - Scraper Mount	2	

All original equipment manufacturers names and part numbers are used for identification purposes only, and we are in no way implying that our products are original equipment parts. Prices subject to change without notice.