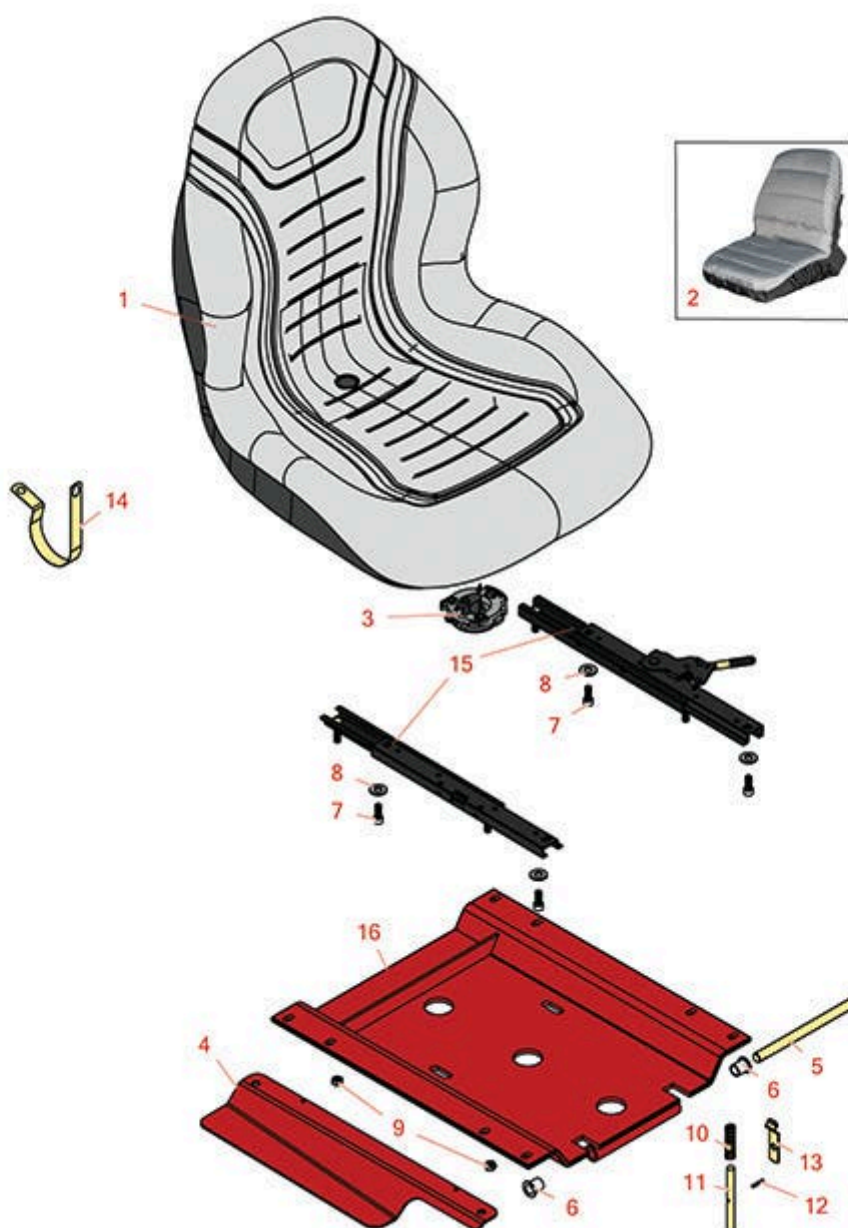




Replaces Toro Greensmaster 3050 Parts

Traction Unit - Model 04351

Seat



All original equipment manufacturers names and part numbers are used for identification purposes only, and we are in no way implying that our products are original equipment parts. Prices subject to change without notice.



Replaces Toro Greensmaster 3050 Parts

Traction Unit - Model 04351
Seat



Item No	R&R Part No.	OEM Part No.	Description	Qty Req	Order Quantity
1	RMXB200GY	100-3187, 104-4620, 104-7620, 21-4880, 351-59, 351-76, 49-8130, 63-9410, 66-5400, 75-9190, 750105, 92-6280, MXB200GY	Milsco Seat XB200 - Grey	1	

Tech Note: This seat will not accept seat belts:

*Detail Description: The Milsco XB200 high back seat features a comfortable vacuum formed, waterproof vinyl cover with central drain hole. Ergonomic foam cushion provides operator comfort. Cover will not crack or peel. Rugged blow-molded plastic frame construction. Allows for Twist-in operator presence switch. Seat: 19in W x 24in D x 21in H. Multiple pre-drilled mounting patterns. Grey. Made in U.S.A.
Please note: Due to excessive air freight charges, this item will be shipped ground freight.:*

2	R120-5179	120-5179	Large Seat Cover - Gray	1	
---	-----------	----------	-------------------------	---	--

Gauges and Controls

3	R151541	R&R ON, LY	Delta Seat Switch - Twist Mount 1 Pole Normally Open	1	
---	---------	---------------	---	---	--

Other Parts Available

4	R83-1840-01	83-1840-01	Cover - Valve - Red	1	
5	R49-5880	49-5880	Shaft - Seat	1	
6	R256-155	256-155, 265-155	Bushing - Flanged	2	
7	R434024	3274-12	Bolt - Soc HD Cap 5/16-18 x 3/4	4	

All original equipment manufacturers names and part numbers are used for identification purposes only, and we are in no way implying that our products are original equipment parts. Prices subject to change without notice.



Replaces Toro Greensmaster 3050 Parts

Traction Unit - Model 04351
Seat



Item No	R&R Part No.	OEM Part No.	Description	Qty Req	Order Quantity
8	R453009	01-166-0400, 24-10-BD, 24-9-AD, 32-9650, 3256-2, 3256-23, 3256-3, 3256-67, 3290-217, 3556-3, 4-2390, 7-0152	Washer - Flat 5/16 SAE	6	
8	R310266	3256-23, 3256-3, 3556-3	Washer - Flat 5/16 USS	6	
9	R3296-29	1-804256, 3290-357, 3296-29, 915662P	Locknut - 5/16-18 ESNA	4	
10	R3-6685	3-6685	Spring - Compression - Seat	1	
11	R51-0350	51-0350	Pin - Spring - Seat	1	
12	R012419	3284-3	Pin - Roll 1/8 x 3/4	1	
13	R68-5310	68-5310	Clip - Rod - Prop	1	
14	R2412-133	01-651-0160, 2412-133	Clamp	1	
15	R150228	351-63, 51-0780, 51-0780 & 51-0790, 51-0780/51-0790, 51-0790, 66-8530	Adjusters - Seat (Set of 2)	1	
16	R83-1270	83-1270	Seat Support Assy	1	

All original equipment manufacturers names and part numbers are used for identification purposes only, and we are in no way implying that our products are original equipment parts. Prices subject to change without notice.