

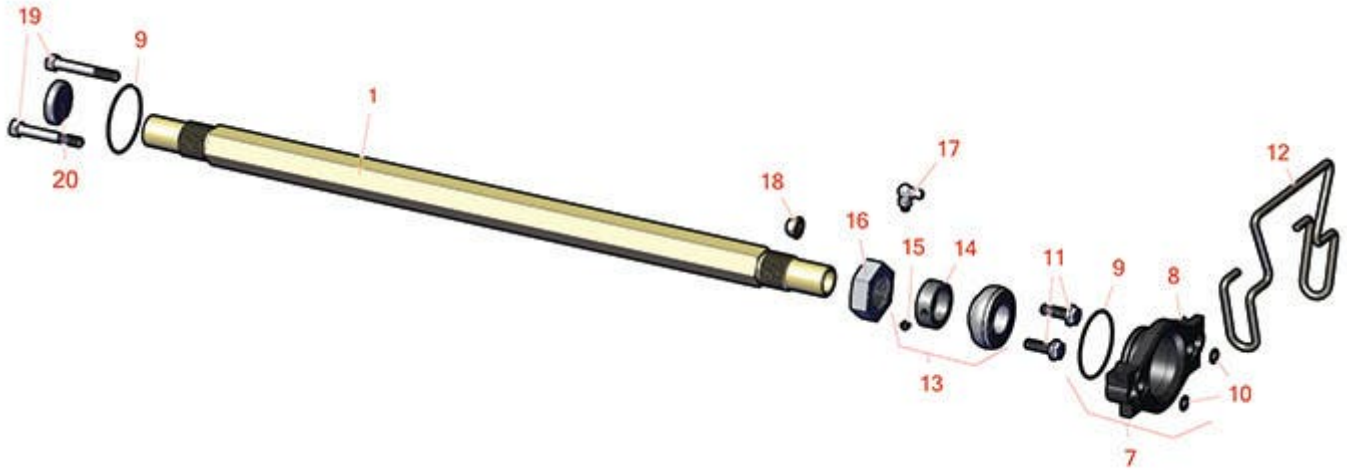


# Replaces Toro Greensmaster TriFlex

## 3320 Parts

*Tri-Roller Unit - Model 04722*

*Roller & Frame*



All original equipment manufacturers names and part numbers are used for identification purposes only, and we are in no way implying that our products are original equipment parts. Prices subject to change without notice.



# Replaces Toro Greensmaster TriFlex

## 3320 Parts

Tri-Roller Unit - Model 04722

Roller & Frame



Item No	R&R Part No.	OEM Part No.	Description	Qty Req	Order Quantity
1	<b>R99-1611</b>	99-1611	Shaft - Spiker	1	
7	<b>R115-5227</b>	115-5227	Motor Adapter Assy	1	
8	<b>R115-3294</b>	115-3294	Adaptor - Hyd Motor	1	
9	<b>R360-0398</b>	360-0398	O-Ring	1	
10	<b>R237-22</b>	107-8844, 237-22, 237-78	O-Ring	2	
11	<b>R3234-29</b>	3234-17, 3234-29	Bolt - 5/16-18x1 Serr Hex	4	
12	<b>R117-6706</b>	117-6706	Clamp - Motor	1	
13	<b>R71-1360</b>	251-219, 251-253, 251-254, 251-320, 71-1360, 88-7880, 94-3405	Bearing	2	
14	<b>R251-77</b>	251-77	Collar - Bearing	1	
15	<b>R3245-35</b>	3245-35	Screw - Set 1/4-28 x 1/4	1	
16	<b>R3220-18</b>	3220-18, 67-5840	Nut - Jam V-Cut Shaft	2	
17	<b>R302-40</b>	302-13, 302-40	Fitting - Grease	2	
18	<b>R104-8300</b>	104-8300, 104-8300 , 119-4041	Locknut - 5/16-18 Flanged Y/Zinc	4	

All original equipment manufacturers names and part numbers are used for identification purposes only, and we are in no way implying that our products are original equipment parts. Prices subject to change without notice.



# Replaces Toro Greensmaster TriFlex 3320 Parts

*Tri-Roller Unit - Model 04722*  
*Roller & Frame*



Item No	R&R Part No.	OEM Part No.	Description	Qty Req	Order Quantity
19	R322-11	01-150-0390, 01-178-0518, 20-31-AD, 322-11, 3223-7	Bolt - 5/16-18 x 2 1/4 Hx HD	2	
20	R105-5708	105-5708, 121-4609	Plug - Expansion	1	

All original equipment manufacturers names and part numbers are used for identification purposes only, and we are in no way implying that our products are original equipment parts. Prices subject to change without notice.