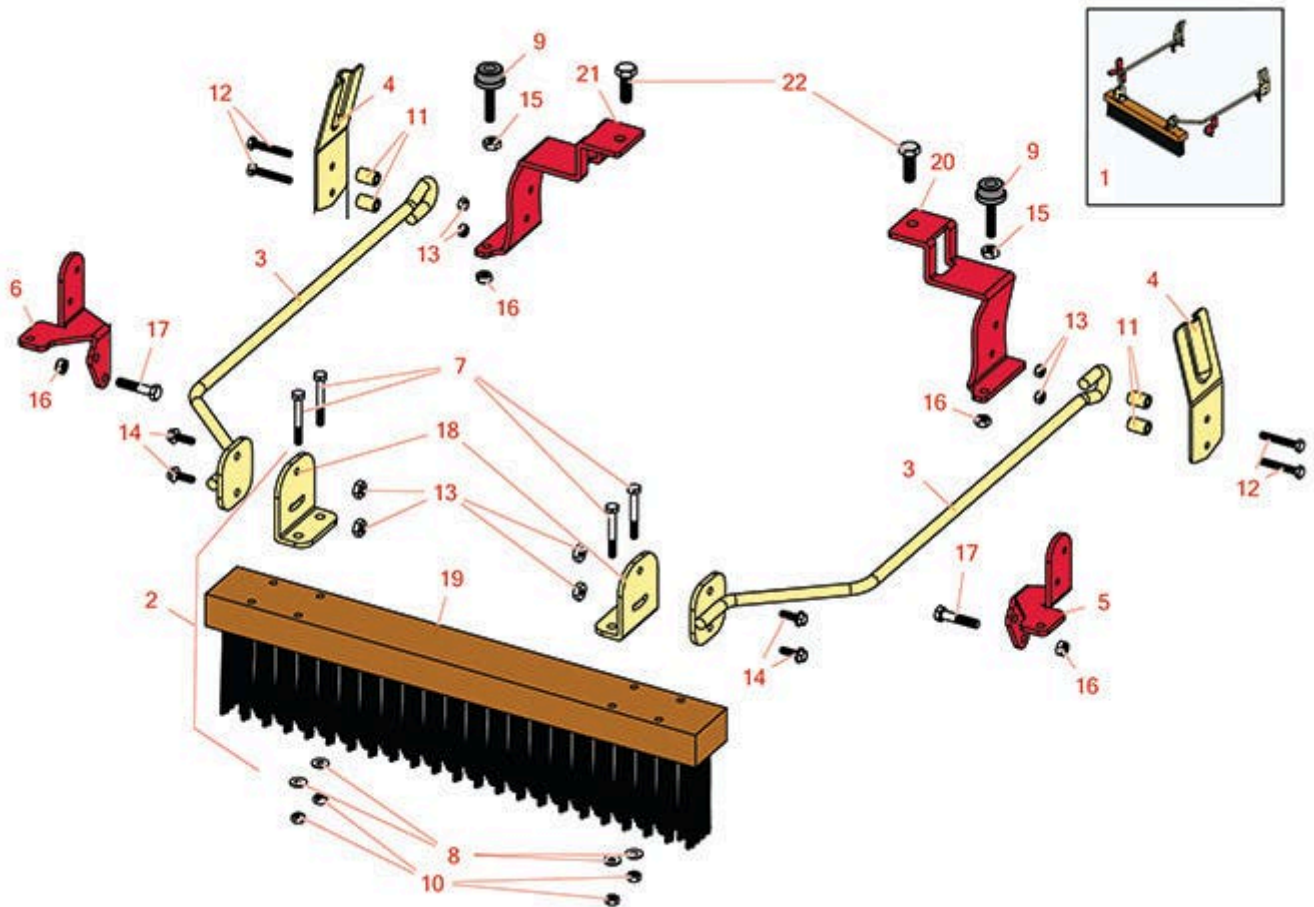




# Replaces Toro Greensmaster 800 Parts

Mower - Model 04048

Out-Front Brush - Model 04119



All original equipment manufacturers names and part numbers are used for identification purposes only, and we are in no way implying that our products are original equipment parts. Prices subject to change without notice.



# Replaces Toro Greensmaster 800 Parts

Mower - Model 04048

Out-Front Brush - Model 04119



Item No	R&R Part No.	OEM Part No.	Description	Qty Req	Order Quantity
---------	--------------	--------------	-------------	---------	----------------

## Front Push Brush

1	<b>R150281</b>		Push Brush Kit - Fits GM800-1000	0	
<i>Detail Description: Includes 8 ea: R81-0130 Nut; 6 ea: R3296-29 Locknut; 4 ea: R322-42 Bolt, R33103-020 Bolt, R33103-040 Bolt, R400120 Bolt, R453023 Washer, R3253-3 Washer, R443102 Nut, R49-0390 Spacer; 2 ea: R106-8454 Rod Assy, R105-9612 Spring, R32141-36 Adjustment Spring, R150283 Bracket, R443106 Nut; 1 ea: R391235 Brush, R105-9615-01 LH Bracket, R105-9616-01 RH Bracket:</i>					

2	<b>R105-9602</b>	105-9602	Brush - Incl 2 Ea R150283 Brackets	0	
---	------------------	----------	------------------------------------	---	--

## Other Parts Available

3	<b>R106-8454</b>	106-8454	Rod Assy - Brush	2	
4	<b>R105-9612</b>	105-9612	Spring - Brush	2	
5	<b>R105-9615-01</b>	105-9615-01	Bracket - LH - Brush	1	
6	<b>R105-9616-01</b>	105-9616-01	Bracket - RH - Brush	1	
7	<b>R400120</b>	01-150-0990, 01-178-0416, 02-150-0990, 321-11, 3222-4, 33114-010, 33114-060, 513327, 908470	Bolt - Hex HD 1/4-20 x 2	4	
8	<b>R453023</b>	3256-1, 3256-22, 3256-72, 33094-00	Washer - Flat 1/4	4	
9	<b>R32141-36</b>	32141-36	Screw Adjustment	2	
10	<b>R443102</b>	01-188-0420, 22-11-AJD, 3217-5, 33024-00	Nut - 1/4-20 Yellow Zinc	4	

All original equipment manufacturers names and part numbers are used for identification purposes only, and we are in no way implying that our products are original equipment parts. Prices subject to change without notice.



# Replaces Toro Greensmaster 800 Parts

Mower - Model 04048

Out-Front Brush - Model 04119



Item No	R&R Part No.	OEM Part No.	Description	Qty Req	Order Quantity
11	<b>R49-0390</b>	49-0390	Spacer	4	
12	<b>R33103-040</b>	33103-040	Bolt - Hex Washer M6-1.0 x 40	4	
13	<b>R81-0130</b>	81-0130	Nut - 6mm-1.0 Flanged Lock Nylon	8	
14	<b>R33103-020</b>	33103-020	Bolt - Hex Washer M6-1.0 x 20	4	
15	<b>R443106</b>	01-188-0518, 22-12-AJD, 32111-4, 3217-4, 3217-6, 3218-2, 513295, 513412, 915112P, 915978, 915979	Nut - 5/16-18 Y/Zinc Plated	2	
16	<b>R3296-29</b>	1-804256, 3290-357, 3296-29, 915662P	Locknut - 5/16-18 ESNA	6	
17	<b>R322-42</b>	322-42	Bolt - Hex Tap 5/16-18 x 1-1/2	4	
18	<b>R150283</b>	120-9630	Bracket - Brush - Fits R&R Brush Only	2	
18	<b>R106-8450</b>	106-8450	Bracket - Brush	2	
19	<b>R391235</b>		Brush - 18/22 in Nylon Push	1	
20	<b>R105-9613-01</b>	105-9613-01	Bracket - LH - Brush	1	
21	<b>R105-9614-01</b>	105-9614-01	Bracket - RH - Brush	1	
22	<b>R33115-030</b>	33115-030, 48-9470	Bolt - Hex HD M10-1.5 x 30	2	

All original equipment manufacturers names and part numbers are used for identification purposes only, and we are in no way implying that our products are original equipment parts. Prices subject to change without notice.