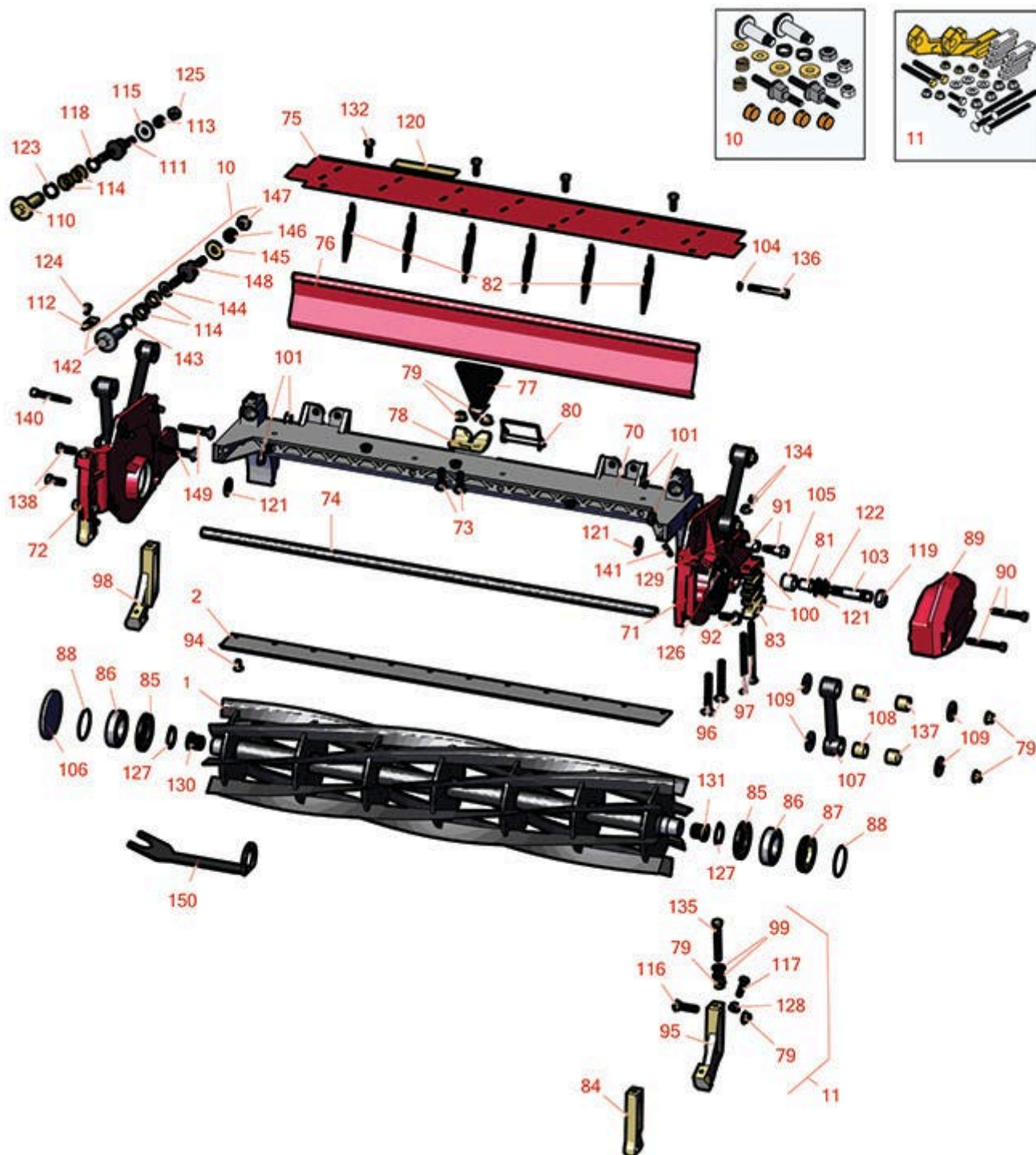




# Replaces Toro Reelmaster 3100-D Parts

32in DPA Cutting Unit - Model 03182

Reel & Bedknife



All original equipment manufacturers names and part numbers are used for identification purposes only, and we are in no way implying that our products are original equipment parts. Prices subject to change without notice.



## Replaces Toro Reelmaster 3100-D Parts

32in DPA Cutting Unit - Model 03182

Reel & Bedknife



Item No	R&R Part No.	OEM Part No.	Description	Qty Req	Order Quantity
---------	--------------	--------------	-------------	---------	----------------

1	<b>R127-2104</b>	115-8282, 127-2104	Reel - 5 Blade Radial 32x7	1	
---	------------------	-----------------------	----------------------------	---	--

*Detail Description: R&R Reel blades are expertly crafted from premium high carbon-boron alloy steel, heat-treated to perfectly complement both R&R and OEM bedknives. Each reel undergoes precision cylindrical grinding on bearing surfaces, followed by relief grinding for optimal performance. Advanced computer balancing ensures extended reel and bearing life. Backed by our lifetime guarantee against defects in materials and craftsmanship under normal use, R&R Reels deliver unmatched durability and cutting precision you can trust.:*

1	<b>R115-8286</b>	115-8286	Reel - 8 Blade 32x7	1	
---	------------------	----------	---------------------	---	--

*Detail Description: R&R Reel blades are expertly crafted from premium high carbon-boron alloy steel, heat-treated to perfectly complement both R&R and OEM bedknives. Each reel undergoes precision cylindrical grinding on bearing surfaces, followed by relief grinding for optimal performance. Advanced computer balancing ensures extended reel and bearing life. Backed by our lifetime guarantee against defects in materials and craftsmanship under normal use, R&R Reels deliver unmatched durability and cutting precision you can trust.:*

1	<b>R127-2105</b>	127-2105	Reel - 8 Blade Radial 32x7	1	
---	------------------	----------	----------------------------	---	--

*Detail Description: R&R Reel blades are expertly crafted from premium high carbon-boron alloy steel, heat-treated to perfectly complement both R&R and OEM bedknives. Each reel undergoes precision cylindrical grinding on bearing surfaces, followed by relief grinding for optimal performance. Advanced computer balancing ensures extended reel and bearing life. Backed by our lifetime guarantee against defects in materials and craftsmanship under normal use, R&R Reels deliver unmatched durability and cutting precision you can trust.:*

1	<b>R133-8273</b>	133-8273	Reel - 8 Blade Razor Series Radial 32x7	1	
---	------------------	----------	--	---	--

*Detail Description: R&R Razor Reels are manufactured from a special high alloy steel and then hardened to RC48-51 to match the temper of our Razor bedknives and original equipment premium series bedknives. All R&R Reels are cylindrically ground on bearing surfaces, relief ground and precision computer balanced for extended bearing and reel life. R&R Products Reels are guaranteed against defects in material and workmanship for the life of the reel under normal use. You can expect up to double the life from Razor reels over standard reels.:*

1	<b>R137-8477</b>	137-8477	Reel - 8 Blade Razor Series Radial (RR) w/Bearings and Seals 32x7	1	
---	------------------	----------	--	---	--

All original equipment manufacturers names and part numbers are used for identification purposes only, and we are in no way implying that our products are original equipment parts. Prices subject to change without notice.



## Replaces Toro Reelmaster 3100-D Parts

32in DPA Cutting Unit - Model 03182  
Reel & Bedknife



Item No	R&R Part No.	OEM Part No.	Description	Qty Req	Order Quantity
---------	--------------	--------------	-------------	---------	----------------

*Detail Description:* R&R Razor Reels are manufactured from a special high alloy steel and then hardened to RC48-51 to match the temper of our Razor bedknives and original equipment premium series bedknives. All R&R Reels are cylindrically ground on bearing surfaces, relief ground and precision computer balanced for extended bearing and reel life. R&R Products Reels are guaranteed against defects in material and workmanship for the life of the reel under normal use. You can expect up to double the life from Razor reels over standard reels.:

### R&R Bedknives, Lifetime Guaranteed

2	<b>R114-9389</b>	114-9389	Bedknife - 32 in Unit - Standard	1
---	------------------	----------	----------------------------------	---

*Detail Description:* R&R Bedknives are manufactured from high carbon-boron alloy steel and then hardened to RC46-49 to match the temper of our reel blades and original equipment reels. Bedknives are surface ground on the top and front edge and straightened three times before being packaged with oil for rust prevention. All R&R Bedknives now have an increased front edge grind for added life. All R&R Bedknives are guaranteed against defects in material and workmanship under normal use for the life of the part.:

2	<b>R114-9391</b>	114-9391	Bedknife - 32 in Unit - Heavy Duty	1
---	------------------	----------	------------------------------------	---

*Detail Description:* R&R Bedknives are manufactured from high carbon-boron alloy steel and then hardened to RC46-49 to match the temper of our reel blades and original equipment reels. Bedknives are surface ground on the top and front edge and straightened three times before being packaged with oil for rust prevention. All R&R Bedknives now have an increased front edge grind for added life. All R&R Bedknives are guaranteed against defects in material and workmanship under normal use for the life of the part.:

### R&R Razor Tool Steel Bedknives, Lifetime Guaranteed

2	<b>R112-8956</b>	112-8956	Bedknife - Razor Tool Steel - 32 x 3/8 Fairway	1
---	------------------	----------	--	---

*Detail Description:* R&R Razor bedknives are manufactured from premium alloy tool steel and then hardened to RC48-51 to match the temper of our Razor reel blades and original equipment premium series reels. Bedknives are surface ground on the top and front edge and specially packaged for rust prevention. All R&R Bedknives now have an increased front edge grind for added life. All R&R Bedknives are guaranteed against defects in material and workmanship under normal use for the life of the part. You can expect up to double the life over standard bedknives.:

### Overhaul Kits

10	<b>R120-7230</b>	120-7230	Overhaul Kit - Fits DPA Units	1
----	------------------	----------	-------------------------------	---

*Detail Description:* Incl 2 ea.: R108-0015, R115-7039, R119-4155, R120-5116, R120-5118, R120-5120, R3296-33, R3296-48 & 4 ea: R106-5344:

All original equipment manufacturers names and part numbers are used for identification purposes only, and we are in no way implying that our products are original equipment parts. Prices subject to change without notice.



## Replaces Toro Reelmaster 3100-D Parts

32in DPA Cutting Unit - Model 03182

Reel & Bedknife



Item No	R&R Part No.	OEM Part No.	Description	Qty Req	Order Quantity
11	<b>R110-9600</b>	110-9600	High HOC Kit	1	
<i>Detail Description: Includes 1 ea.: R120-0404, R120-0405 &amp; 2 ea: R112-7451, R322-16, R445722 &amp; 4 ea.: R106-9758, R104-8300, R453011, R104-8301 &amp; 8 ea: R106-3925:</i>					
<b>Other Parts Available</b>					
70	<b>R112-8978</b>	112-8978	Frame - Center 32 in Unit	1	
71	<b>R115-4260</b>	115-4260	Plate- Side - LH Fits OEM Units Only	1	
72	<b>R115-4263</b>	115-4263	Plate- Side - RH - Fits OEM Units Only	1	
73	<b>R3231-25</b>	01-173-0610, 30-9970, 3231-25, 3231-3, 900064P	Bolt - Carriage 3/8-16 x 1-1/4	2	
74	<b>R112-8979</b>	112-8979	Tube - Support - 32 in Units	1	
75	<b>R112-8983</b>	112-8983	Front Grass Shield Assy - 32 in Units	1	
76	<b>R112-8985-01</b>	112-8985-01	Rear Grass Shield Assy - 32 in Units	1	
77	<b>R110-4088-03</b>	110-4088-03, 119-8010-03	Kickstand	1	
78	<b>R110-4058</b>	110-4058	Bracket - Chain	1	
79	<b>R104-8301</b>	104-8301, 104-9301, 109-6658, 133-7570	Locknut - 3/8-16 Nylon Flanged	2	
80	<b>R107-7400</b>	107-7400	Pin - Lynch	1	
81	<b>R56-9520</b>	56-9520	Bushing - Nyliner	2	
82	<b>R110-1706</b>	110-1706	Deflector	6	

All original equipment manufacturers names and part numbers are used for identification purposes only, and we are in no way implying that our products are original equipment parts. Prices subject to change without notice.



## Replaces Toro Reelmaster 3100-D Parts

32in DPA Cutting Unit - Model 03182

Reel & Bedknife



Item No	R&R Part No.	OEM Part No.	Description	Qty Req	Order Quantity
83	<b>R106-3924</b>	106-3924	Bracket - Rear Roller	2	
84	<b>R107-2952</b>	107-2952	Bracket - Front Roller	2	
85	<b>R107-4028</b>	105-6757, 107-4028	Seal - Grease	2	
86	<b>R93-2489</b>	93-2489	Bearing - Reel	2	
87	<b>R107-2954</b>	107-2954	Nut - Bearing Adjuster	1	
88	<b>R112-6967</b>	112-6967	O-Ring	2	
89	<b>R119-0614-01</b>	119-0614-01	Weight	1	
90	<b>R101526</b>	01-150-0970, 01-178-0620, 20-53-AGD, 321-11, 3224-8, 323-11, 323-12, 323-31, 323-4, 323-47	Bolt - Hex HD 3/8-16 x 2-1/2 GR5	2	
91	<b>R107-2979</b>	107-2979	Bolt - Shoulder	6	
92	<b>R3234-11</b>	3234-11	Bolt - Hex Washer HD	2	
94	<b>R119-4151</b>	119-4151	Screw - Bedknife 5/16-18 x 17/32	10	
94	<b>R150476</b>	3-3816, 3-6462, 57-4910	Screw - Bedknife 5/16-18 x 5/8	10	
95	<b>R108-4213</b>	108-4213	Bracket- HOC - LH - Groomer	1	
95	<b>R120-0404</b>	120-0404	Bracket- High HOC - LH	1	
<i>Detail Description: Fits 2011 &amp; Newer:</i>					
96	<b>R3230-26</b>	3230-26	Screw - Carriage 5/16-18 x 3	4	

All original equipment manufacturers names and part numbers are used for identification purposes only, and we are in no way implying that our products are original equipment parts. Prices subject to change without notice.



## Replaces Toro Reelmaster 3100-D Parts

32in DPA Cutting Unit - Model 03182

Reel & Bedknife



Item No	R&R Part No.	OEM Part No.	Description	Qty Req	Order Quantity
97	<b>R106-9758</b>		Bolt - Carriage 5/16x4	4	
97	<b>R3230-30</b>	3230-30	Bolt - Carriage 5/16x4 1/2	4	
97	<b>RP17609-2</b>	106-9758, 3230-7	Bolt - Carriage 5/16-18 x 1-1/2	4	
97	<b>R3230-7</b>	25-33-AGD, 3230-9	Bolt - Carriage 5/16-18 x 2 1/2	4	
98	<b>R108-4214</b>	108-4214	Bracket-HOC - RH - Groomer	1	
98	<b>R120-0405</b>	120-0405	Bracket - High HOC - RH	2	
<i>Detail Description: Fits 2011 &amp; Newer:</i>					
98	<b>R125-2796</b>	125-2796	Bracket- Front HOC	2	
<i>Detail Description: Fits 2013 &amp; Newer:</i>					
99	<b>R453011</b>	01-166-0100, 01-166-0120, 01-166-0270, 01-166-0500, 01-166-0600, 01-166-0620, 132-4593, 2356-3, 237-12, 24-10-AD, 24-11-AD, 24-11-BD, 24-12-AD, 24-12-BD, 30-9310, 32-8190, 3256-24, 3256-3, 3256-36, 3256-4, 453011, 47-9950, 48-9220, 513458, 7-0052	Washer - Flat 3/8 SAE Y/Zinc	4	

All original equipment manufacturers names and part numbers are used for identification purposes only, and we are in no way implying that our products are original equipment parts. Prices subject to change without notice.



## Replaces Toro Reelmaster 3100-D Parts

32in DPA Cutting Unit - Model 03182

Reel & Bedknife



Item No	R&R Part No.	OEM Part No.	Description	Qty Req	Order Quantity
100	<b>R106-3925</b>	106-3925	Shim - 1/4 - Rear Roller HOC	8	
100	<b>R119-0626</b>	119-0626	Shim - Roller - 1/4 in - Slotted	8	
101	<b>R32128-43</b>	30-8990, 32128-43, 3290-357	Nut - Flanged Whiz - 3/8-16	4	
101	<b>R3296-39</b>	32127-25, 32128-36, 3290-357, 3296-17, 3296-22, 3296-39, 915663P, 99-7443	Locknut - 3/8-16 Nylon	4	
103	<b>R106-9623</b>	106-9623	Bolt - Bedbar	2	
104	<b>R3256-74</b>	3256-74	Washer - Flat	1	
105	<b>R106-9618</b>	106-9618	Bushing - Rubber	2	
106	<b>R94-2703</b>	94-2703	Plug - Plastic Spindle Housing	1	
107	<b>R16-9759</b>	16-9759	Link Assy	4	
108	<b>R93-6981</b>	93-6981	Spacer	8	
109	<b>R93-8806</b>	93-8806	Washer-Hardened	16	
110	<b>R106-5363</b>	106-5363	Shaft - Adjusting - Bed Bar - Stainless	2	
111	<b>R99-2096</b>	99-2096	Screw - Bed Bar Adjustment - M10 Thrd 1 End	2	
112	<b>R99-2097</b>	99-2097	Detent - Bed Bar Adjuster	2	
113	<b>R99-3755</b>	99-3755	Spring - Bed Bar Adjusting	2	
114	<b>R106-5344</b>	106-5344	Bushing - Flanged and Keyed	4	
115	<b>R99-2098</b>	99-2098	Washer - Bed Bar Adjuster	2	

All original equipment manufacturers names and part numbers are used for identification purposes only, and we are in no way implying that our products are original equipment parts. Prices subject to change without notice.





## Replaces Toro Reelmaster 3100-D Parts

32in DPA Cutting Unit - Model 03182

Reel & Bedknife



Item No	R&R Part No.	OEM Part No.	Description	Qty Req	Order Quantity
116	<b>R3231-4</b>	01-157-0440, 01-173-0612, 3231-4	Bolt - Carriage 3/8-16 x 1-1/2	2	
117	<b>R322-16</b>	322-16, Apr-00	Bolt - Hex HD 5/16-18 x 1-1/8	2	
118	<b>R32120-93</b>	32120-93	Snap Ring - HD	2	
119	<b>R3296-33</b>	3296-33	Locknut - 5/8-18 ESNA Jam	12	
120	<b>R93-6688</b>	93-6688	Decal - Warning	1	
121	<b>R61-1950</b>	61-1950	Washer - Nylon - Bed Bar	4	
122	<b>R453017</b>	01-166-0050, 01-166-0240, 01-166-0800, 24-13-AD, 24-14-AD, 32-8110, 3256-26, 3256-6, 453017, 69-8980, 87-7270	Washer - Flat 1/2	2	
123	<b>R106-5335</b>	106-5335	Wave Washer - Reel Adjusting	2	
124	<b>R114-9396</b>	114-9396, 119-4067	Bolt - Hex HD 5/16-18 x 3/8	2	
125	<b>R33025-00</b>	32025-00, 33025-00	Locknut - 10mm x 1.5 Jam	2	

All original equipment manufacturers names and part numbers are used for identification purposes only, and we are in no way implying that our products are original equipment parts. Prices subject to change without notice.





## Replaces Toro Reelmaster 3100-D Parts

32in DPA Cutting Unit - Model 03182

Reel & Bedknife



Item No	R&R Part No.	OEM Part No.	Description	Qty Req	Order Quantity
126	R302-5	21-6010, 302-11, 302-37, 302-47, 302-5, 302-57, 302-58, 302-6, 31-0300, 32-9660, 60-0800, 62-3880, 92-4181	Fitting - Grease	2	
127	R92-2601	92-2601	Snap Ring	2	
128	R445722	30-8980, 32128-2, 32128-20, 32128-20	Nut - Serrated Washer	2	
129	R170714	302-34, 302-39, 62-3520	Fitting - Pressure Relief	2	
130	R107-3275	107-3275	Insert - Threaded - RH - 9 Tooth	1	
131	R107-3276	107-3276	Insert - Threaded - LH - 9 Tooth	1	
132	R3234-7	3234-7	Bolt - Hex Washer HD 5/16-18 x 5/8	4	
134	R104-8300	104-8300, 104-8300 , 119-4041	Locknut - 5/16-18 Flanged Y/Zinc	6	
135	R112-7451	100-9429, 112-7451	Bolt - Hex Tap 3/8-16 x 2-3/4	2	
135	R107-4026	107-4026	Bolt - Hex Tap 3/8-16 x 3-3/4	2	
136	R322-14	01-150-0830, 01-178-0524, 30-8900, 322-14	Bolt - Hex HD 5/16-18 x 3 GR5	1	

All original equipment manufacturers names and part numbers are used for identification purposes only, and we are in no way implying that our products are original equipment parts. Prices subject to change without notice.



## Replaces Toro Reelmaster 3100-D Parts

32in DPA Cutting Unit - Model 03182

Reel & Bedknife



Item No	R&R Part No.	OEM Part No.	Description	Qty Req	Order Quantity
137	<b>R94-8945</b>	94-8945	Bushing - Bronze - Link Bar	8	
138	<b>R323-6</b>	01-150-0010, 01-178-0608, 20-47-AD, 20-47-AGD, 3224-2, 323-6, 49-3510, 908034P, 908332	Bolt - Hex HD 3/8-16 x 1 GR5 YZ	2	
140	<b>R107-7773</b>	107-7773	Bolt - Soc HD Cap 5/16-18 x 2-1/2	1	
141	<b>R107-7447</b>	107-7447	Set Screw - 1/4 x 1-1/4 Sq HD	2	
142	<b>R120-5118</b>	120-5118	Shaft - Adjuster	2	
<i>Detail Description: 2012 &amp; Newer:</i>					
143	<b>R120-5116</b>	120-5116	Washer - Wave	2	
144	<b>R108-0015</b>	108-0015	Washer - Flat	2	
145	<b>R119-4155</b>	119-4155	Washer - Hardened	2	
146	<b>R120-5120</b>	120-5120	Spring - Compression	2	
147	<b>R3296-48</b>	119-4039, 32146-7, 3296-34, 3296-48	Locknut - 7/16-14 ESNA	2	
148	<b>R115-7039</b>	115-7039	Screw - Adjuster - Bedbar	2	
149	<b>R3231-40</b>	3231-40	Bolt - Carriage 3/8-16 x 2 1/4	8	
150	<b>R117-0975</b>	117-0975	Tool- Reel Bearing Installation	1	

All original equipment manufacturers names and part numbers are used for identification purposes only, and we are in no way implying that our products are original equipment parts. Prices subject to change without notice.