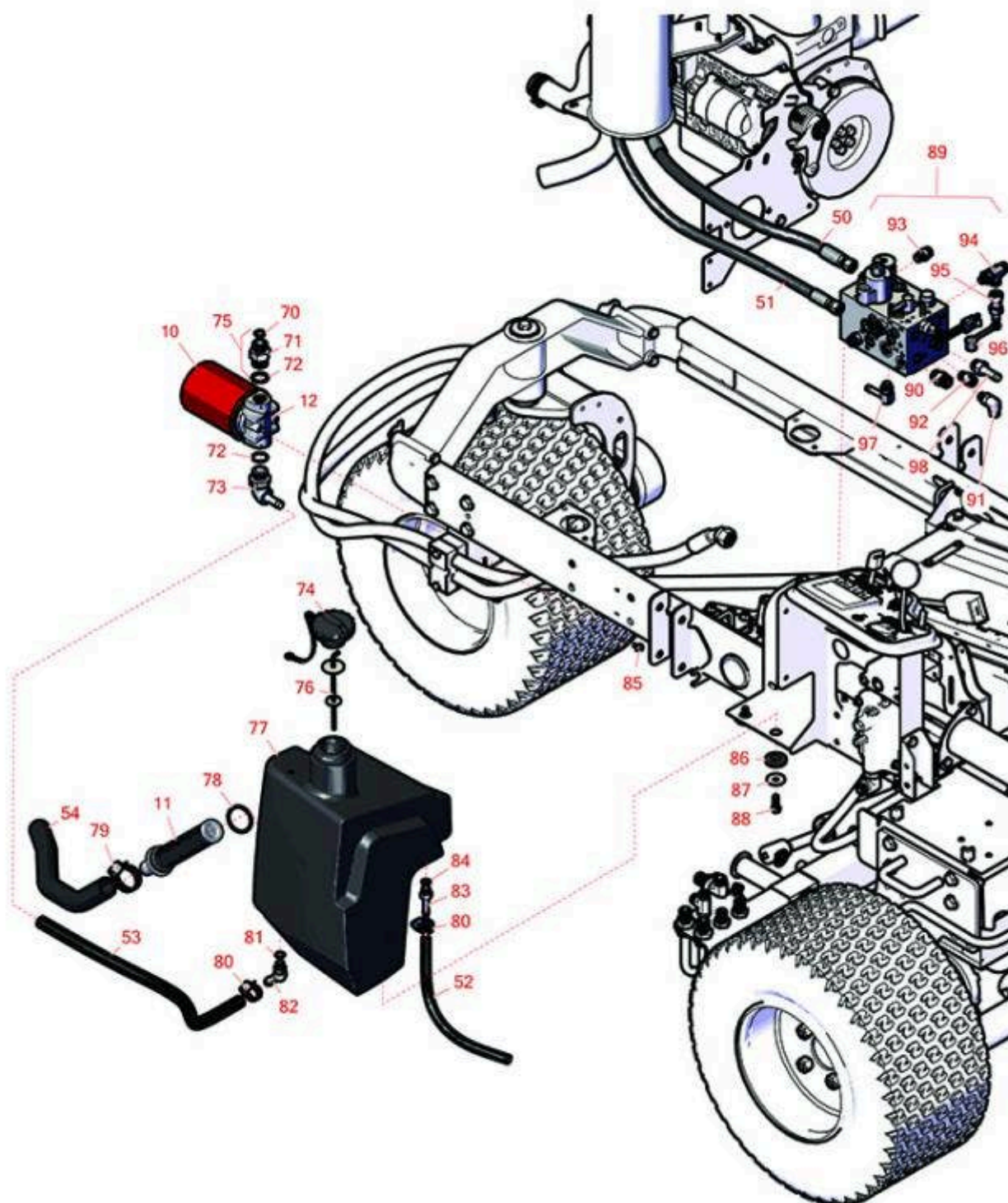




Replaces Toro Reelmaster 3100-D Parts

Traction Unit - Model 03170

Hydraulic Tank



All original equipment manufacturers names and part numbers are used for identification purposes only, and we are in no way implying that our products are original equipment parts. Prices subject to change without notice.



Replaces Toro Reelmaster 3100-D Parts

Traction Unit - Model 03170

Hydraulic Tank



Item No	R&R Part No.	OEM Part No.	Description	Qty Req	Order Quantity
---------	--------------	--------------	-------------	---------	----------------

Filters

10	R86-3010	23-9740, 239470, 28-1370, 281370, 353-387, 353387, 54-0110, 540110, 76-6490, 86-3010, 863010, Dec-70	Baldwin Hydraulic Oil Filter	1	
10	RRF10611	01-317-0240, 23-9740, 54-0110	SilverGuard Hydraulic Oil Filter	1	
10	RRF10610	28-1370, 353-387, 353387, 54-0110, 76-6490, 86-3010	SilverGuard Oil Filter	1	
11	R104-7546	104-7546, 104-7546`	Strainer - Tank	1	
12	R150924		Filter Head Assy	1	
12	R92-5821	86-3000, 92-5821	Filter - Head	1	

Hoses

50	R95-8829	95-8829	Hydraulic Hose Assy	1	
51	R106-4197	106-4197	Hydraulic Hose Assy	1	
52	R104-4846	104-4846	Hose	1	
53	R99-3501	99-3501	Hose	1	
54	R104-4845	104-4845	Hose - Suction	1	

All original equipment manufacturers names and part numbers are used for identification purposes only, and we are in no way implying that our products are original equipment parts. Prices subject to change without notice.



Replaces Toro Reelmaster 3100-D Parts

Traction Unit - Model 03170

Hydraulic Tank



Item No	R&R Part No.	OEM Part No.	Description	Qty Req	Order Quantity
---------	--------------	--------------	-------------	---------	----------------

Other Parts Available

70	R237-65	237-65, 237.65	O-Ring	1	
71	R340-8	340-8	Adapter	1	
72	R237-81	237-81, 237.81, 327-81	O-Ring	2	
73	R95-8814	95-8814	Fitting - Barbed 90 Deg	1	
74	R93-7160	93-3103, 93-7160	Cap - Hyd Oil w/Tether	1	
75	R100-4240	100-4240	No 8 Orfs Male x No 12 Orb Male	1	
76	R75-3710	75-3710	Dipstick - Hyd Oil	1	
76	R119-6968	119-6968	Dipstick- Oil	1	
77	R104-4840	104-4840	Tank - Hyd	1	
78	R340-136	340-136	O-Ring	1	
79	R2412-34	2412-34, 31-0120	Clamp - Hose .75-1.5	2	

Detail Description: Stainless steel hose clamp with 5/16" slotted hex head, heat treated carbon steel, plated with zinc plus trivalent chromate for long lasting protection.:

79	RG116	2412-34, 31-0120, 94-3188, 94-3189, 94-3193, 94-3203, 94-3204	Clamp - Hose 3/4" x 1-1/2" - Box/10	1	
----	--------------	---	--	---	--

Detail Description: Stainless steel hose clamps with 5/16" slotted hex head, heat treated carbon steel, plated with zinc plus trivalent chromate for long lasting protection. Good general-purpose clamp. Box of 10.:

All original equipment manufacturers names and part numbers are used for identification purposes only, and we are in no way implying that our products are original equipment parts. Prices subject to change without notice.



Replaces Toro Reelmaster 3100-D Parts

Traction Unit - Model 03170

Hydraulic Tank



Item No	R&R Part No.	OEM Part No.	Description	Qty Req	Order Quantity
80	R2412-36	2210-87, 2412-36, 31-9140, 93-5818, 99-0772	Clamp - Hose 1/2	3	
81	R237-79	237-79	O-Ring	1	
82	R354-126	354-126	Hydraulic Fitting - 45 Deg	1	
83	R353-979	353-979	Fitting - Straight	1	
84	R237-42	237-42, 31-4160	O-Ring	1	
85	R3234-13	3234-13, 960151P	Bolt - Flanged Hex 1/4-20	2	
86	R240-11	240-11	Bushing - Rubber - Flanged	4	
87	R63-8410	53-6380, 63-4810, 63-8410	Washer - Isolator Bushing	4	
88	R3234-11	3234-11	Bolt - Hex Washer HD	4	
89	R108-9037	104-4841, 108-9037	Manifold - Reel Drive	1	
90	R340-4	340-4	Hydraulic Fitting - Male Connector	3	
91	R340-77	340-100, 340-77, 95-7889	Hydraulic Fitting	2	
92	R340-2	340-2, 60-1920	Hydraulic Fitting - Striaght	2	
93	R340-92	340-92	Hydraulic Fitting - Striaght	1	
94	R340-86	340-86	Fitting-Tee	1	
95	R86-5480	86-5480, 95-0986	Nipple - Test	1	

All original equipment manufacturers names and part numbers are used for identification purposes only, and we are in no way implying that our products are original equipment parts. Prices subject to change without notice.



Replaces Toro Reelmaster 3100-D Parts

Traction Unit - Model 03170

Hydraulic Tank



Item No	R&R Part No.	OEM Part No.	Description	Qty Req	Order Quantity
96	R354-79	354-79	Cap-Dust	1	
97	R100-4887	100-4887	Fitting-Barb	1	
98	R354-121	354-121, 92-1665	Fitting-Straight	1	

All original equipment manufacturers names and part numbers are used for identification purposes only, and we are in no way implying that our products are original equipment parts. Prices subject to change without notice.