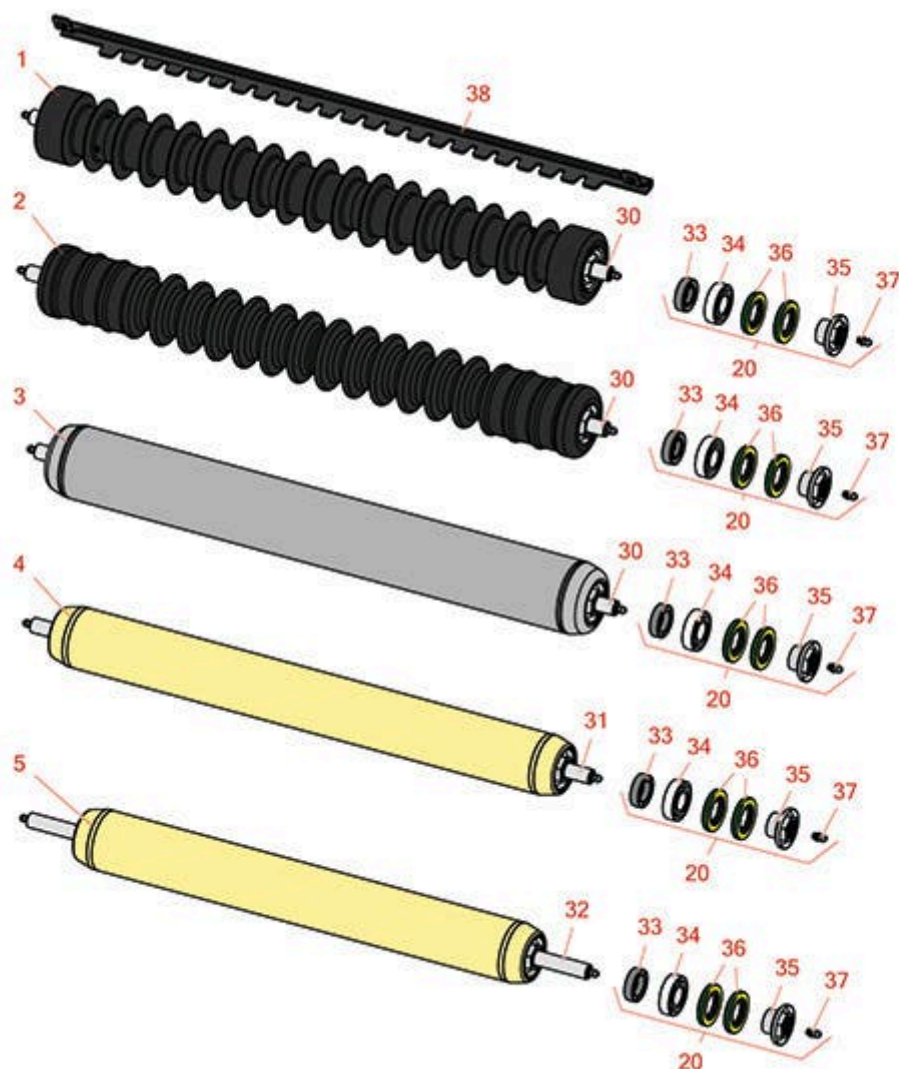




# Replaces Toro Reelmaster 5010-H Parts

Cutting Unit with 5" Reels - Models 03621, 03623, 03634 & 03635  
Rollers



All original equipment manufacturers names and part numbers are used for identification purposes only, and we are in no way implying that our products are original equipment parts. Prices subject to change without notice.



# Replaces Toro Reelmaster 5010-H Parts

Cutting Unit with 5" Reels - Models 03621, 03623, 03634 & 03635  
Rollers



Item No	R&R Part No.	OEM Part No.	Description	Qty Req	Order Quantity
---------	--------------	--------------	-------------	---------	----------------

## R&R Front Rollers

1	<b>R1503911</b>	110-4050, 114-5400, 114-5421	Roller - Fusion Grooved UHMW Polyethylene	1	
---	-----------------	------------------------------------	--	---	--

*Detail Description:* Fusion Rollers combine the best features of our UHMW plastic rollers with a heavy-duty internal bearing system. Machined from solid UHMW plastic that prevents build-up of debris. This roller has a patented deep groove design and turns on precision stainless ball bearings and double seals for added life. (2006 & Up):

2	<b>R1503915</b>	110-9608, 114-5421	Roller - Fusion Grooved UHMW Polyethylene Shoulder	1	
---	-----------------	-----------------------	---	---	--

*Detail Description:* Fusion Rollers combine the best features of our UHMW plastic rollers with a heavy duty internal bearing system. Machined from solid UHMW plastic that prevents build-up of debris. This roller has a patented deep groove design in the center along with shallow grooves on each end to reduce marking in wet conditions and turns on precision stainless ball bearings and double seals for added life.:

3	<b>R114-5412</b>	114-5412	Roller - Smooth Tubular Steel	1	
---	------------------	----------	-------------------------------	---	--

*Detail Description:* Constructed with a through shaft, this heavy-duty roller uses greasable stainless ball bearings. (2008 & Up):

4	<b>R114-5404</b>	114-5404, 137-6107	Roller - Smooth Tubular Steel - Long	1	
---	------------------	-----------------------	---	---	--

*Detail Description:* Constructed with a through shaft, this heavy-duty roller uses greasable stainless ball bearings. (2006 - 2007):

5	<b>R114-5406</b>	114-5406	Roller - Smooth Tubular Steel - Short	1	
---	------------------	----------	--	---	--

*Detail Description:* Constructed with a through shaft, this heavy-duty roller uses greasable stainless ball bearings. (2008 & Up):

## Overhaul Kits

20	<b>R114-5430</b>	114-5430	Overhaul Kit - Roller	0	
----	------------------	----------	-----------------------	---	--

*Detail Description:* Includes 4 ea.: R112-7494 Seals; 2 ea.: R302-5 Grease Zerks, R114-3717 Seals, R112-5290 Bearings & R114-3745 Locknuts:

All original equipment manufacturers names and part numbers are used for identification purposes only, and we are in no way implying that our products are original equipment parts. Prices subject to change without notice.



# Replaces Toro Reelmaster 5010-H Parts

Cutting Unit with 5" Reels - Models 03621, 03623, 03634 & 03635  
Rollers



Item No	R&R Part No.	OEM Part No.	Description	Qty Req	Order Quantity
<b>Other Parts Available</b>					
30	<b>R114-5403</b>	114-5403	Shaft - Front Roller	1	
31	<b>R114-5407</b>	114-5407	Shaft - Long Rear Roller	1	
32	<b>R114-5410</b>	114-5410	Shaft - Short - Rear Roller	1	
33	<b>R114-3717</b>	114-3717	Seal	2	
34	<b>R112-5290</b>	112-5290, 251--346, 251-346, 72-5430	Bearing - Stainless	2	
35	<b>R114-3745</b>	106-6939, 108-3151, 114-3745, 114-5411	Locknut - Bearing - Stainless	2	
36	<b>R112-7494</b>	112-7494	Seal	4	
37	<b>R302-5</b>	21-6010, 302-11, 302-37, 302-47, 302-5, 302-57, 302-58, 302-6, 31-0300, 32-9660, 60-0800, 62-3880, 92-4181	Fitting - Grease	2	
38	<b>R107-2993-03</b>	107-2993-03	Scraper - Fits Toro Plastic Gr Roller Only	1	

All original equipment manufacturers names and part numbers are used for identification purposes only, and we are in no way implying that our products are original equipment parts. Prices subject to change without notice.