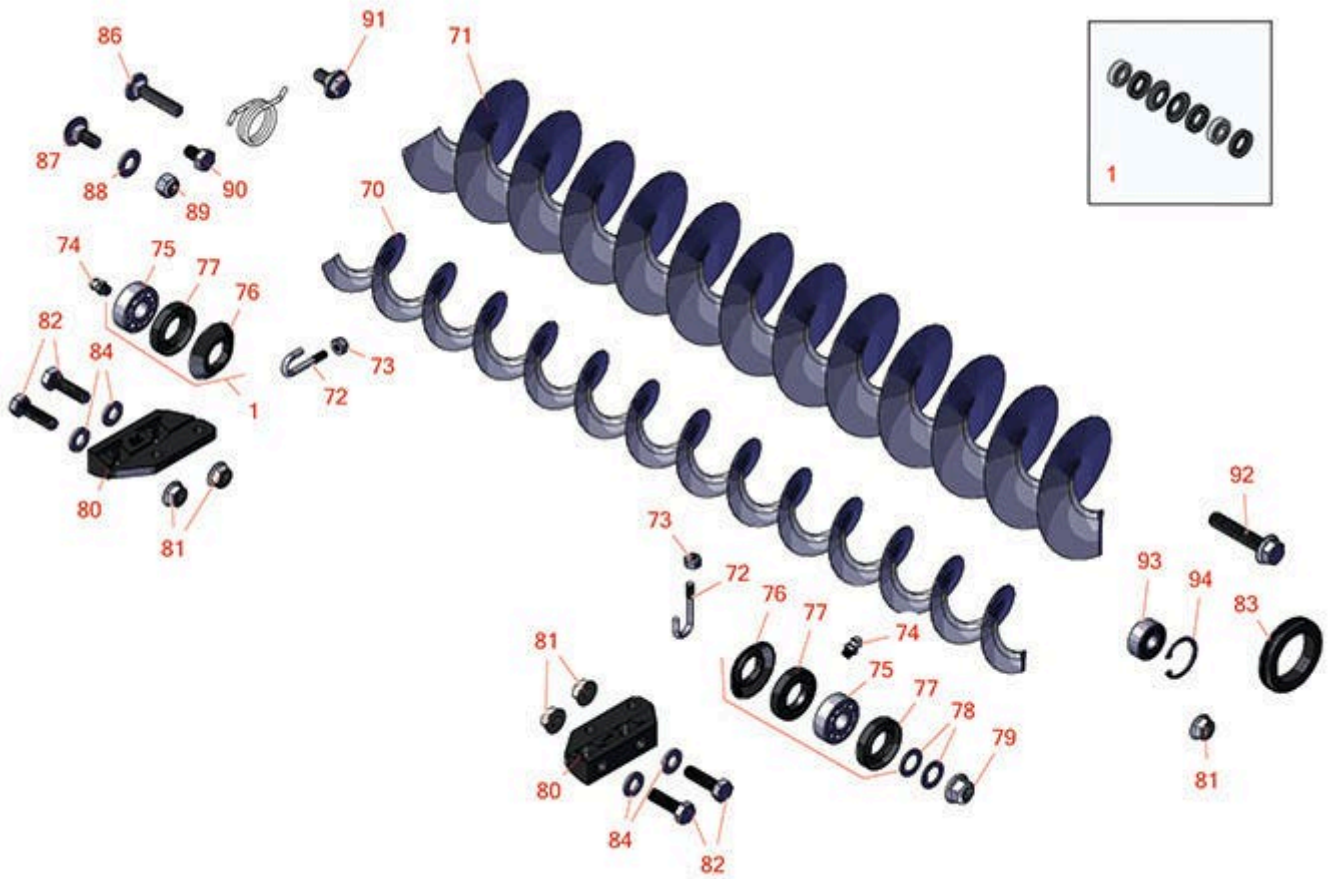




Replaces Toro Reelmaster 5210-D Parts

Cutting Unit with 5" Reels - Models 03621, 03623, 03634 & 03635

Rear Roller Brush



All original equipment manufacturers names and part numbers are used for identification purposes only, and we are in no way implying that our products are original equipment parts. Prices subject to change without notice.



Replaces Toro Reelmaster 5210-D Parts

Cutting Unit with 5" Reels - Models 03621, 03623, 03634 & 03635

Rear Roller Brush



Item No	R&R Part No.	OEM Part No.	Description	Qty Req	Order Quantity
Overhaul Kit					
1	R131-3233	131-3233	Groomer/Rrb Seal Kit	1	
Other Parts Available					
70	R108-4193	108-4193	Brush - Roller - 2 OD	5	
71	R110-1740	110-1740	Brush-Roller (High HOC) 3.5 in OD	5	
72	R105-9632	105-9632	Bolt - J	10	
73	R3296-2	32127-10, 3296-2, 9157404	Nut - #10 Lock	10	
74	R302-5	21-6010, 302-11, 302-37, 302-47, 302-5, 302-57, 302-58, 302-6, 31-0300, 32-9660, 60-0800, 62-3880, 92-4181	Fitting - Grease	10	
75	R95-0707	95-0707	Bearing - Self Aligning	10	
76	R108-4172	108-4172	Seal - Excluder	10	
77	R106-8530	106-8530	Seal - Oil	15	
78	R112-6957	112-6957	Washer - Hardened	10	
79	R104-8301	104-8301, 104-9301, 109-6658, 133-7570	Locknut - 3/8-16 Nylon Flanged	5	
80	R108-4480	108-4480	Bracket - Rear Roller Brush	10	

All original equipment manufacturers names and part numbers are used for identification purposes only, and we are in no way implying that our products are original equipment parts. Prices subject to change without notice.



Replaces Toro Reelmaster 5210-D Parts

Cutting Unit with 5" Reels - Models 03621, 03623, 03634 & 03635

Rear Roller Brush



Item No	R&R Part No.	OEM Part No.	Description	Qty Req	Order Quantity
81	R104-8300	104-8300, 104-8300 , 119-4041	Locknut - 5/16-18 Flanged Y/Zinc	20	
82	R322-16	322-16, Apr-00	Bolt - Hex HD 5/16-18 x 1-1/8	20	
83	R240-7	240-7	Grommet - Rubber - 2 in OD	5	
84	R94-6936	94-6936, 94-9236	Washer - Hardened - 5/16 SAE	20	
86	R112-6950	112-6950, 3230-27	Bolt - Carriage 5/16-18 x 1-1/2	15	
87	R3230-23	3230-23, Mar-61	Bolt - 5/16-18x3/4 - Carriage	10	
88	R3256-45	3256-45	Washer - Flat .733 x .381 x .058 YZ	20	
89	R3296-47	3296-47	Locknut - 5/16-18 Jam Nyloc	30	
90	R322-1	01-178-0504, 20-22-AD, 20-22-AGD, 322-1, 513337	Bolt - Hex HD 5/16-18 x 1/2	10	
91	R27-0411	27-0411	Bolt - Shoulder	5	
92	R66-9302	3234-20, 66-9302	Screw - HHF, Whiz	5	
93	R110-1701	110-1701	Bearing	5	
94	R32151-60	32151-60	Ring - Snap	5	

All original equipment manufacturers names and part numbers are used for identification purposes only, and we are in no way implying that our products are original equipment parts. Prices subject to change without notice.