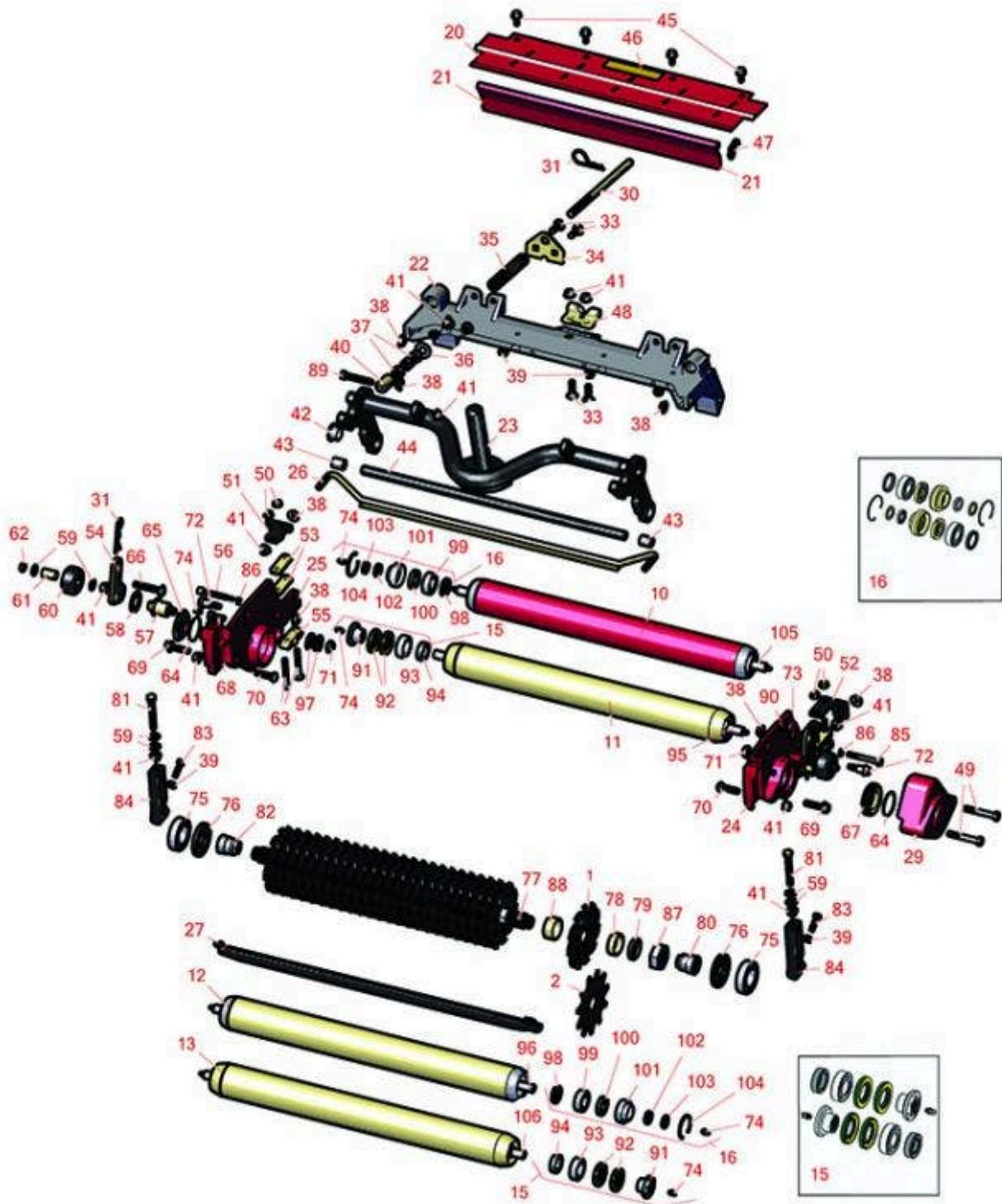




Replaces Toro Reelmaster 5210-D Parts

Verti-Cut Unit - Model 03664

Verti-Cut Reel & Frame



All original equipment manufacturers names and part numbers are used for identification purposes only, and we are in no way implying that our products are original equipment parts. Prices subject to change without notice.



Replaces Toro Reelmaster 5210-D Parts

Verti-Cut Unit - Model 03664

Verti-Cut Reel & Frame



Item No	R&R Part No.	OEM Part No.	Description	Qty Req	Order Quantity
---------	--------------	--------------	-------------	---------	----------------

Blades

1	R150209C	106-6355	Verti-Cut Blade - Carbide Tipped 2mm	25
---	-----------------	----------	---	----

*Detail Description: STRONG BY DESIGN. Each blade is made with the highest quality hand-picked steel, and laser-cut to our exacting specifications for superior toughness and wear.

TUNGSTEN CARBIDE TIPS. Protect blades from abrasion for extended life and maintain a consistent cutting depth. Optional cutting widths to meet local turf conditions.:*

2	R17-1590	17-1590	Verti-Cut Blade	25
---	-----------------	---------	-----------------	----

Rollers

10	R107-4040	107-4040	Roller - Smooth Tubular Steel	1
----	------------------	----------	-------------------------------	---

Detail Description: Constructed with a through shaft, this heavy-duty roller uses greasable ball bearings. (2006 - 2007):

11	R114-5404	114-5404, 137-6107	Roller - Smooth Tubular Steel - Long	1
----	------------------	-----------------------	---	---

Detail Description: Constructed with a through shaft, this heavy-duty roller uses greasable stainless ball bearings. (2006 - 2007):

12	R110-9614	110-9614	Roller Assy - 2.5 Solid Front	1
----	------------------	----------	-------------------------------	---

Detail Description: Constructed with a through shaft, this heavy duty roller uses greasable ball bearings.:

13	R114-5419	114-5419, 137-6109	Roller - Smooth Tubular Steel	1
----	------------------	-----------------------	-------------------------------	---

Overhaul kits

15	R114-5430	114-5430	Overhaul Kit - Roller	1
----	------------------	----------	-----------------------	---

Detail Description: Includes 4 ea.: R112-7494 Seals; 2 ea.: R302-5 Grease Zerks, R114-3717 Seals, R112-5290 Bearings & R114-3745 Locknuts:

16	R106-9606	106-9606	Overhaul Kit - Roller	1
----	------------------	----------	-----------------------	---

Detail Description: Include 2 ea: R343667 Bearings, R253-70 Seals, R32120-62 Retaining Rings, R93-1251 Seals, R93-1252 Seals, R93-2931 Washers, R93-3007 Seals:

All original equipment manufacturers names and part numbers are used for identification purposes only, and we are in no way implying that our products are original equipment parts. Prices subject to change without notice.



Replaces Toro Reelmaster 5210-D Parts

Verti-Cut Unit - Model 03664

Verti-Cut Reel & Frame



Item No	R&R Part No.	OEM Part No.	Description	Qty Req	Order Quantity
Other Parts Available					
20	R107-2996	107-2996	Grass Shield - Front	1	
21	R107-7777-01	107-7777-01	Grass Shield Assy - Rear	1	
22	R107-2951	107-2951	Frame	1	
23	R106-3937	106-3937	Carrier Frame Assy	1	
24	R110-9628	110-9628	LH Side Plate Assy	1	
25	R110-9629	110-9629	RH Side Plate Assy	1	
26	R107-2999	107-2999	Scraper - Rear Roller	1	
27	R108-4475-03	108-4475-03	Scraper - Full Front 2.5 in	1	
29	R108-9090-01	108-9090-01	Weight	1	
30	R108-4959	108-4959	Rod - Turf Tension	1	
31	R92-2762	92-2762	Pin - Snap	2	
31	R3290-355	01-159-0050, 3290-355, 58-5370	Pin - Bridge - Snap	2	
33	R3231-25	01-173-0610, 30-9970, 3231-25, 3231-3, 900064P	Bolt - Carriage 3/8-16 x 1-1/4	4	
34	R110-4069	110-4069	Bracket	1	
35	R108-4960	108-4960	Spring - Turf Tension	1	

All original equipment manufacturers names and part numbers are used for identification purposes only, and we are in no way implying that our products are original equipment parts. Prices subject to change without notice.



Replaces Toro Reelmaster 5210-D Parts

Verti-Cut Unit - Model 03664

Verti-Cut Reel & Frame



Item No	R&R Part No.	OEM Part No.	Description	Qty Req	Order Quantity
36	R453017	01-166-0050, 01-166-0240, 01-166-0800, 24-13-AD, 24-14-AD, 32-8110, 3256-26, 3256-6, 453017, 69-8980, 87-7270	Washer - Flat 1/2	1	
36	R455012	3256-26, 41-8440	Washer - Flat 1/2 x 3/4	1	
36	R87-7270-01	87-7270	Washer - Flat 1/2	1	
37	R443818	01-191-0813, 3218-18, 3218-5	Nut - 1/2-13 Hex Jam Zinc	3	
38	R32128-43	30-8990, 32128-43, 3290-357	Nut - Flanged Whiz - 3/8-16	7	
38	R3296-39	32127-25, 32128-36, 3290-357, 3296-17, 3296-22, 3296-39, 915663P, 99-7443	Locknut - 3/8-16 Nylon	5	
38	R32128-40	32128-40	Nut- 3/8-16 Hx Flange	5	
39	R445722	30-8980, 32128-2, 32128-20, 32128-20	Nut - Serrated Washer	6	
40	R99-8662	99-8662	Tube - Spring	1	

All original equipment manufacturers names and part numbers are used for identification purposes only, and we are in no way implying that our products are original equipment parts. Prices subject to change without notice.



Replaces Toro Reelmaster 5210-D Parts

Verti-Cut Unit - Model 03664

Verti-Cut Reel & Frame



Item No	R&R Part No.	OEM Part No.	Description	Qty Req	Order Quantity
41	R104-8301	104-8301, 104-9301, 109-6658, 133-7570	Locknut - 3/8-16 Nylon Flanged	13	
41	R32128-19	104-8301, 104-9301, 32128-19	Locknut - 3/8-16 Flanged Top Lock	6	
42	R93-2877	93-2877	Bushing - Flanged	2	
43	R108-4279	108-4279	Spacer - Frame	2	
44	R108-4284	108-4284	Shaft - Support	1	
45	R3234-5	3234-5, 62-3310	Bolt - 5/16-18x3/4 Hx Ser Was HD	4	
46	R93-6688	93-6688	Decal - Warning	1	
47	R108-4961	108-4961	Tab - Stop - Shield	1	
48	R110-4058	110-4058	Bracket - Chain	1	
49	R101526	01-150-0970, 01-178-0620, 20-53-AGD, 321-11, 3224-8, 323-11, 323-12, 323-31, 323-4, 323-47	Bolt - Hex HD 3/8-16 x 2-1/2 GR5	2	
50	R104-8300	104-8300, 104-8300, 119-4041	Locknut - 5/16-18 Flanged Y/Zinc	4	
51	R107-3281	107-3281	Bracket - Scraper - RH	1	
52	R107-3279	107-3279	Bracket - Scraper - LH	1	
53	R106-3925	106-3925	Shim - 1/4 - Rear Roller HOC	4	

All original equipment manufacturers names and part numbers are used for identification purposes only, and we are in no way implying that our products are original equipment parts. Prices subject to change without notice.



Replaces Toro Reelmaster 5210-D Parts

Verti-Cut Unit - Model 03664

Verti-Cut Reel & Frame



Item No	R&R Part No.	OEM Part No.	Description	Qty Req	Order Quantity
54	R108-4286	108-4286	Bracket - Adj	2	
55	R106-3924	106-3924	Bracket - Rear Roller	2	
56	R107-7773	107-7773	Bolt - Soc HD Cap 5/16-18 x 2-1/2	1	
57	R108-4289	108-4289	Pin - Roller Mounting	2	
58	R3254-21	3254-21	Washer - 1 in Interl Star	2	
59	R453011	01-166-0100, 01-166-0120, 01-166-0270, 01-166-0500, 01-166-0600, 01-166-0620, 132-4593, 2356-3, 237-12, 24-10-AD, 24-11-AD, 24-11-BD, 24-12-AD, 24-12-BD, 30-9310, 32-8190, 3256-24, 3256-3, 3256-36, 3256-4, 453011, 47-9950, 48-9220, 513458, 7-0052	Washer - Flat 3/8 SAE Y/Zinc	4	
60	R108-4293	108-4293	Roller - UHMW	2	
61	R59-2580	59-2580	Spacer - Wheel	2	
62	R3296-59	3296-59	Locknut - 3/8-16 Nylon Jam	2	
62	R444850	3296-59	Nut - 3/8-16 Jam Center Lock	2	

All original equipment manufacturers names and part numbers are used for identification purposes only, and we are in no way implying that our products are original equipment parts. Prices subject to change without notice.



Replaces Toro Reelmaster 5210-D Parts

Verti-Cut Unit - Model 03664

Verti-Cut Reel & Frame



Item No	R&R Part No.	OEM Part No.	Description	Qty Req	Order Quantity
63	RP17609-2	106-9758, 3230-7	Bolt - Carriage 5/16-18 x 1-1/2	4	
64	R237-68	237-68	O-Ring	2	
65	R150485	2410-30	Cap - Protective Bearing Housing	1	
66	R3231-7	3231-33, 3231-7	Bolt - Carriage 3/8-16 x 2-1/4	2	
67	R107-2954	107-2954	Nut - Bearing Adjuster	1	
68	R3234-11	3234-11	Bolt - Hex Washer HD	2	
69	R3234-19	3234-19	Bolt - Hex Washer 3/8-16x1-3/4	2	
70	R3231-4	01-157-0440, 01-173-0612, 3231-4	Bolt - Carriage 3/8-16 x 1-1/2	2	
71	R3296-28	119-4154, 140-9234, 32127-34, 32128-7, 32128-8, 32136-7, 3296-28	Nut - 1/2-20 ESNA Jam	2	
72	R107-2979	107-2979	Bolt - Shoulder	4	
73	R170714	302-34, 302-39, 62-3520	Fitting - Pressure Relief	2	

All original equipment manufacturers names and part numbers are used for identification purposes only, and we are in no way implying that our products are original equipment parts. Prices subject to change without notice.



Replaces Toro Reelmaster 5210-D Parts

Verti-Cut Unit - Model 03664

Verti-Cut Reel & Frame



Item No	R&R Part No.	OEM Part No.	Description	Qty Req	Order Quantity
74	R302-5	21-6010, 302-11, 302-37, 302-47, 302-5, 302-57, 302-58, 302-6, 31-0300, 32-9660, 60-0800, 62-3880, 92-4181	Fitting - Grease	6	
75	R93-2489	93-2489	Bearing - Reel	2	
76	R107-4028	105-6757, 107-4028	Seal - Grease	2	
77	R108-4955	108-4955	Shaft Assy - V-Cut	1	
78	R17-1580	17-1580	Spacer - V-Cut Reel 1/2	1	
79	R108-4994	108-4994	Spacer - 1/4 in - V-Cut Shaft	1	
80	R108-4957	108-4957	Insert-LH - Verticut	1	
81	R112-7451	100-9429, 112-7451	Bolt - Hex Tap 3/8-16 x 2-3/4	2	
82	R108-4958	108-4958	Insert- RH - Verticut	1	
83	R322-16	322-16, Apr-00	Bolt - Hex HD 5/16-18 x 1-1/8	2	
84	R107-2952	107-2952	Bracket - Front Roller	2	
85	R322-14	01-150-0830, 01-178-0524, 30-8900, 322-14	Bolt - Hex HD 5/16-18 x 3 GR5	1	
86	R3256-74	3256-74	Washer - Flat	1	

All original equipment manufacturers names and part numbers are used for identification purposes only, and we are in no way implying that our products are original equipment parts. Prices subject to change without notice.



Replaces Toro Reelmaster 5210-D Parts

Verti-Cut Unit - Model 03664

Verti-Cut Reel & Frame



Item No	R&R Part No.	OEM Part No.	Description	Qty Req	Order Quantity
87	R3220-18	3220-18, 67-5840	Nut - Jam V-Cut Shaft	1	
88	R82-6600	82-6600, 94-5889	Spacer - V-Cut	24	
88	R17-1600	17-1600	Spacer - V-Cut Reel 1/4	1	
89	R104-3396	104-3396	Bolt - Hex HD 3/8-16 x 2-1/4	1	
90	R106-4214	106-4214	Set Screw - 1/4-20 x 1/2 Cone Point	1	
91	R114-3745	106-6939, 108-3151, 114-3745, 114-5411	Locknut - Bearing - Stainless	3	
92	R112-7494	112-7494	Seal	6	
93	R112-5290	112-5290, 251--346, 251-346, 72-5430	Bearing - Stainless	3	
94	R114-3717	114-3717	Seal	3	
95	R114-5407	114-5407	Shaft - Long Rear Roller	1	
96	R110-4053	110-4053	Shaft - Front Roller	1	
97	R453013	01-166-0140, 01-166-0700, 3256-5, 80-4850	Washer - Flat 7/16	4	
98	R93-3007	93-3007	Seal	1	
99	R343667	109966, 251-6, 38-7820	Bearing - Ball	1	
100	R93-1251	93-1251	Seal	1	

All original equipment manufacturers names and part numbers are used for identification purposes only, and we are in no way implying that our products are original equipment parts. Prices subject to change without notice.



Replaces Toro Reelmaster 5210-D Parts

Verti-Cut Unit - Model 03664

Verti-Cut Reel & Frame



Item No	R&R Part No.	OEM Part No.	Description	Qty Req	Order Quantity
101	R93-1252	93-1252	Seal - Outer	1	
102	R253-70	253-70	Seal	1	
103	R93-2931	93-2931	Washer - Roller Seal	1	
104	R32120-62	32120-62	Ring - Retaining	1	
105	R107-3296	107-3296, 99-5717	Shaft - Rear Long Roller	1	
106	R114-5403	114-5403	Shaft - Front Roller	1	

All original equipment manufacturers names and part numbers are used for identification purposes only, and we are in no way implying that our products are original equipment parts. Prices subject to change without notice.