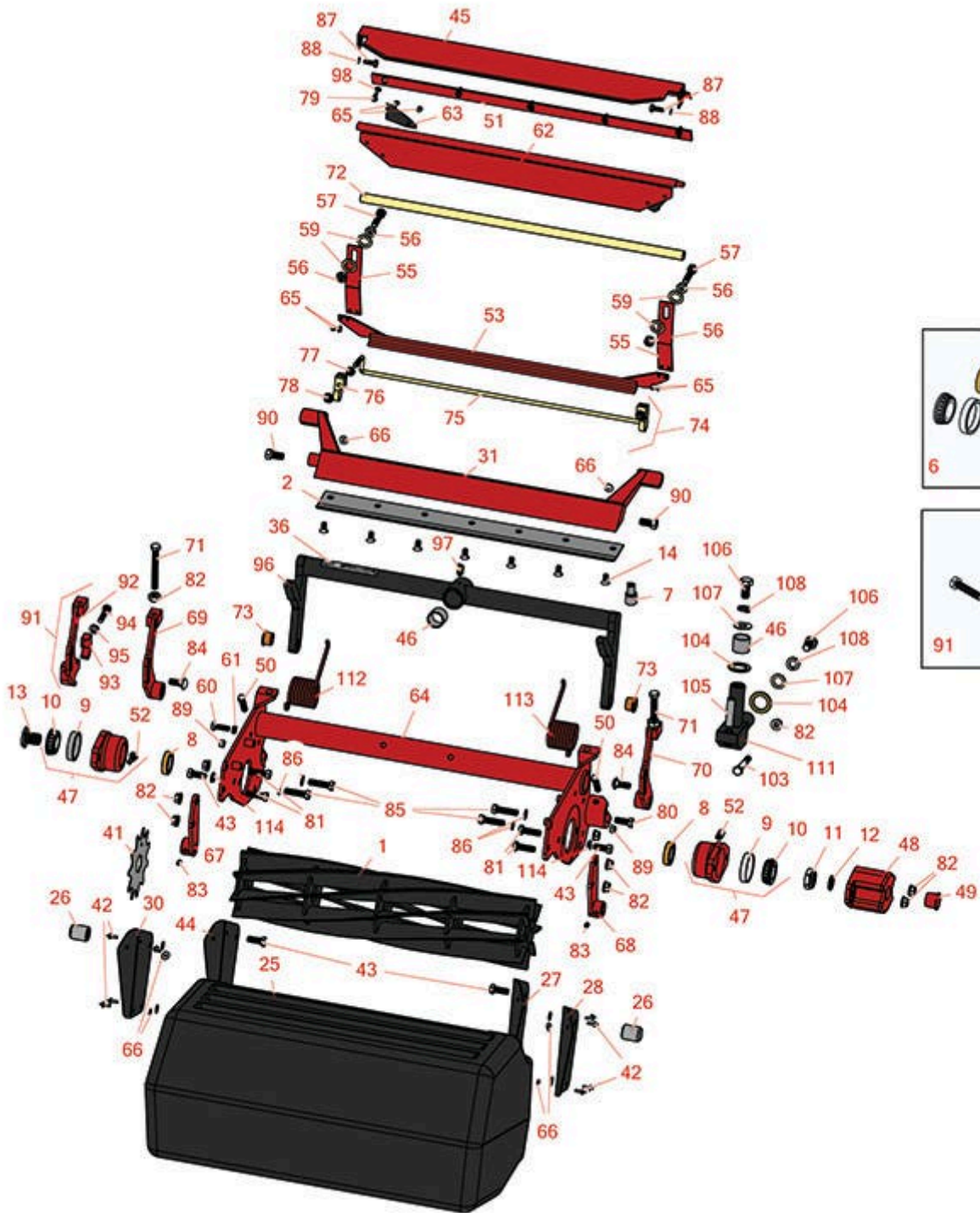




Replaces Toro Reelmaster 5300-D Parts

Cutting Unit - Models 03506 & 03509
Reel & Bedknife



All original equipment manufacturers names and part numbers are used for identification purposes only, and we are in no way implying that our products are original equipment parts. Prices subject to change without notice.



Replaces Toro Reelmaster 5300-D Parts

Cutting Unit - Models 03506 & 03509

Reel & Bedknife



Item No	R&R Part No.	OEM Part No.	Description	Qty Req	Order Quantity
---------	--------------	--------------	-------------	---------	----------------

R&R Reels, Lifetime Guaranteed

1	R14-0659	14-0659, 57-5300	Reel - 5 Blade Heavy Duty	1	
1	R14-0649	14-0649	Reel - 8 Blade Heavy Duty	1	
2	R63-8610	63-8610	Bedknife - Fairway Cut .375 - 1.00 HOC	1	
2	R150462	63-8610, 94-6396	Bedknife - 7 Hole Thick 5/16	1	
2	R150464		Bedknife - Super Thick 7/16	1	
2	R100-3350	100-3350	Bedknife - High Cut	1	

Overhaul Kits & Service Tools

6	R255-300	107-1590	Overhaul Kit - Cutting Unit	0	
<i>Tech Note: Includes 2 ea: R253-96 Seals, R254-72 Cups, R254-94 Bearings; 1ea: R253-61 Seal, R32127-46 Locknut:</i>					
7	R51-0880	51-0880	Bedknife Screw Driver Tool	0	

Other Parts Available

8	R253-96	253-96	Seal - Oil Single Lip Reel	2	
9	R254-72	01-103-0050, 01-103-0120, 01-103-0140, 1-543508, 254-71, 254-72, 40439, 62-3340, 99-4511	Cup - Bearing	2	

All original equipment manufacturers names and part numbers are used for identification purposes only, and we are in no way implying that our products are original equipment parts. Prices subject to change without notice.



Replaces Toro Reelmaster 5300-D Parts

Cutting Unit - Models 03506 & 03509

Reel & Bedknife



Item No	R&R Part No.	OEM Part No.	Description	Qty Req	Order Quantity
10	R254-94	1-543509, 254-94, 32-8090, 32-8240, 32-9640, 40440, 62-3330	Tapered Bearing Cone	2	
11	R32127-46	32127-46, 3296-60	Locknut	1	
12	R253-61	253-61	Seal - Oil Reel	1	
13	R10-5100	10-5100	Nut - Splined 1-1/8 Long	1	
14	R150476	3-3816, 3-6462, 52-4910, 57-4910	Screw - Bedknife 5/16-18 x 5/8	7	
25	R75-4010	104-8219, 75-4010	Grass Basket	1	
26	R75-3930	75-3930	Pin - Grass Basket	1	
27	R75-4040	75-4040	Support - Outer LH	1	
28	R75-4030	75-4030	Support - Inner LH	1	
30	R75-4020	75-4020	Support - RH Inner	1	
31	R10-4930	10-4930, 10-4930-01	Bed Bar	1	
36	R67-7960	27-2890, 62-5070, 67-7960	Decal - Warning	1	
41	R17-1590	17-1590	Verti-Cut Blade	37	
42	R3269-28	3269-28	Rivet - Pop Grass Basket	10	

All original equipment manufacturers names and part numbers are used for identification purposes only, and we are in no way implying that our products are original equipment parts. Prices subject to change without notice.



Replaces Toro Reelmaster 5300-D Parts

Cutting Unit - Models 03506 & 03509

Reel & Bedknife



Item No	R&R Part No.	OEM Part No.	Description	Qty Req	Order Quantity
43	R323-6	01-150-0010, 01-178-0608, 20-47-AD, 20-47-AGD, 3224-2, 323-6, 49-3510, 908034P, 908332	Bolt - Hex HD 3/8-16 x 1 GR5 YZ	2	
44	R75-4050	75-4050	Support - RH Outer	1	
45	R75-1840	75-1840	Shield - Grass	1	
46	R67-1751	67-1751	Bushing - 1-1/2 Long	2	
46	R67-1750	67-1750	Bushing - 1 Long	2	
47	R10-5120	10-5120	Housing - Bearing Reel	2	
<i>Tech Note: Includes R253-96 & R254-72:</i>					
48	R10-5080	10-5080, 10-5080-01	End - Cap Reel Brg Housing	1	
48	R92-4080	92-4080	Roller End - Cap Reel Bearing Housing	1	
<i>Tech Note: Includes sensor hole:</i>					
49	R12-0460	12-0460	Caplug - End Cap	1	
50	R3243-13	3243-13	Screw - Bed Bar Adjusting	4	
51	R36-7260	36-7260	Bar - Cut Off Grass Shield	1	
52	R302-40	302-13, 302-40	Fitting - Grease	2	
53	R03512	03512	Scraper - Rear Roller	1	
53	R75-1750	75-1750	Scraper - Rear Roller	1	
55	R75-1740	75-1740	Spring - Scraper	2	

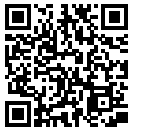
All original equipment manufacturers names and part numbers are used for identification purposes only, and we are in no way implying that our products are original equipment parts. Prices subject to change without notice.



Replaces Toro Reelmaster 5300-D Parts

Cutting Unit - Models 03506 & 03509

Reel & Bedknife



Item No	R&R Part No.	OEM Part No.	Description	Qty Req	Order Quantity
56	R3218-3	01-191-0616, 22-13-AJKD, 3218-3, 915236P	Nut - 3/8-16 Jam	4	
57	R323-50	323-50	Bolt - 3/8-16 x 1-1/2	2	
59	R453011	01-166-0100, 01-166-0120, 01-166-0270, 01-166-0500, 01-166-0600, 01-166-0620, 132-4593, 2356-3, 237-12, 24-10-AD, 24-11-AD, 24-11-BD, 24-12-AD, 24-12-BD, 30-9310, 32-8190, 3256-24, 3256-3, 3256-36, 3256-4, 453011, 47-9950, 48-9220, 513458, 7-0052	Washer - Flat 3/8 SAE Y/Zinc	4	
60	R322-5	01-178-0508, 20-26-AD, 20-26-AGD, 30-9000, 322-5, 513341, 519755, 908019P, N/A	Bolt - Hex HD 5/16-18 x 1	1	

All original equipment manufacturers names and part numbers are used for identification purposes only, and we are in no way implying that our products are original equipment parts. Prices subject to change without notice.



Replaces Toro Reelmaster 5300-D Parts

Cutting Unit - Models 03506 & 03509

Reel & Bedknife



Item No	R&R Part No.	OEM Part No.	Description	Qty Req	Order Quantity
61	R3253-4	01-166-0110, 01-166-0510, 23-10-GD, 24-7170, 30-8520, 3253-4, 42-9850, 48-9350, 48-9360, 48-9570, 68-9420, 99-7577	Washer - Lock 5/16 Zinc	1	
62	R75-1560	75-1560	Deflector - Rear	1	
63	R75-1720	75-1720	Flap - Rubber Rear Deflector	2	
64	R75-6660	75-6660	Frame	1	
65	R3269-4	3269-3, 3269-4	Rivet - Rear Deflector	4	
66	R3256-49	3256-49	Washer - Flat 3/16x9/16x18GA	14	
67	R75-1960	75-1960	Bracket - RH Front Roller	1	
68	R75-1980	75-1980	Bracket - LH Front Roller	1	
69	R75-1610	75-1610	Bracket - Rear HOC RH	1	
70	R75-1620	75-1620	Bracket - Rear HOC LH	1	
71	R323-49	323-49	Bolt - HOC 3/8-16 x 3 1/2	2	
72	R75-1710	75-1710	Rod - Support Cutting Unit	1	
73	R3-1506	3-1506, 75-2160, Apr-50	Bushing - Bronze	2	
74	R92-3085	92-3085	Scraper Assy - Roller	1	
75	R92-3086	92-3086	Rod - Scraper	1	

All original equipment manufacturers names and part numbers are used for identification purposes only, and we are in no way implying that our products are original equipment parts. Prices subject to change without notice.



Replaces Toro Reelmaster 5300-D Parts

Cutting Unit - Models 03506 & 03509

Reel & Bedknife



Item No	R&R Part No.	OEM Part No.	Description	Qty Req	Order Quantity
76	R92-3087	92-3087	Bracket - Scraper	2	
77	R32128-33	32128-33	Nut - 1/4-20 Flanged Serr	2	
78	R32128-32	32128-32	Locknut - 1/4-20 Flanged	2	
79	R32144-73	104-2065, 32144-73	Screw - Machine Hex Washer Head	5	
80	R323-2	01-178-0604, 323-2	Bolt - Hex HD 3/8-16 x 1	1	
81	R400264	01-150-0180, 01-178-0610, 20-48-AD, 20-48-AGD, 32-9160, 3224-3, 323-29, 323-7, 400264, 908035P	Bolt - Hex HD 3/8-16 x 1-1/4	4	
82	R3296-39	32127-25, 32128-36, 3290-357, 3296-17, 3296-22, 3296-39, 915663P, 99-7443	Locknut - 3/8-16 Nylon	4	
82	R321397	01-158-0480, 01-189-0616, 22-13-AJF, 22-13-AJFD, 32127-19, 32127-32, 32146-2, 32146-3, 32152-7, 32153-2, 32153-8, 3296-11, Aug-80	Nut - 3/8-16 ESNA	4	

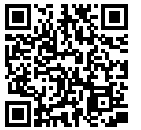
All original equipment manufacturers names and part numbers are used for identification purposes only, and we are in no way implying that our products are original equipment parts. Prices subject to change without notice.



Replaces Toro Reelmaster 5300-D Parts

Cutting Unit - Models 03506 & 03509

Reel & Bedknife



Item No	R&R Part No.	OEM Part No.	Description	Qty Req	Order Quantity
83	R415521	32-113-AHNC, 32137-1, 3246-2, 909862P	Screw - Set - 5/16-18 x 3/8	4	
84	R3231-2	01-157-0170, 01-173-0608, 3231-2, 3231-22, 3231-28, 900063P	Bolt - Carriage 3/8-16 x 1	2	
85	R3290-316	3290-316, 57-3210	Bolt - Hex Tap 3/8-16 x 1-1/2	2	
86	R3255-9	3255-9	Washer - Lock 3/8 Ext. Star	6	
87	R321-4	01-150-1030, 01-178-0406, 20-3-AGD, 321-4, 3222-1	Bolt - Hex HD 1/4-20 x 3/4	2	
88	R3253-3	01-166-0070, 01-166-0410, 23-9-GD, 24-7150, 3253-3, 3256-1, 352-167	Washer - Lock 1/4	2	
89	R301504	2296-42, 301504, 32127-24, 32128-33, 32146-17, 3296-16, 3296-42, 3296-42 , 915661P	Locknut - ESNA 1/4-20	2	
90	R315298	217-74, 31-1070	Bolt - Bed Bar	2	
91	R150430		Bracket - Assy Quick Release	1	

All original equipment manufacturers names and part numbers are used for identification purposes only, and we are in no way implying that our products are original equipment parts. Prices subject to change without notice.



Replaces Toro Reelmaster 5300-D Parts

Cutting Unit - Models 03506 & 03509

Reel & Bedknife



Item No	R&R Part No.	OEM Part No.	Description	Qty Req	Order Quantity
<i>Tech Note: Exclusively from R&R! This R&R bracket allows quick removal and replacement of rear rollers without removing brackets from the frame and having to reset the height of cut! Replace only L.H. bracket to use the system.:</i>					
92	R150431		Bracket - Only Quick Release	1	
93	R150432		Clamp - Quick Release Bkt	1	
94	R322-7	01-150-0750, 01-150-0760, 01-178-0512, 20-28-AD, 20-28-AGD, 322-7, 3223-4	Bolt - Hex HD 5/16-18 x 1-1/2	1	
95	R446136		Washer - Lock 5/16 Zinc	1	
96	R75-1600	75-1600	Frame - Carrier Cutting Unit	1	
97	R302-60	302-60	Zerk - Grease 90 Deg.	1	
98	R3256-14	24-7-BD, 32125-2, 3256-14, 3256-51, 51-2170	Washer - 10 Flat	5	
103	R101526	01-150-0970, 01-178-0620, 101526, 20-53-AGD, 321-11, 3224-8, 323-11, 323-12, 323-31, 323-4, 323-47	Bolt - Hex HD 3/8-16 x 2-1/2 GR5	2	
104	R256-115	256-115	Washer - Thrust Bronze	11	
105	R32121-122	01-153-0140, 32121-122	Pin - Roll 1/2 x 2	3	

All original equipment manufacturers names and part numbers are used for identification purposes only, and we are in no way implying that our products are original equipment parts. Prices subject to change without notice.



Replaces Toro Reelmaster 5300-D Parts

Cutting Unit - Models 03506 & 03509

Reel & Bedknife



Item No	R&R Part No.	OEM Part No.	Description	Qty Req	Order Quantity
106	R325-4	01-150-0280, 01-178-0806, 01-178-0808, 20-85-AD, 20-85-AGD, 325-1, 325-2, 325-4	Bolt - Hex HD 1/2-13 x 1	6	
107	R453017	01-166-0050, 01-166-0240, 01-166-0800, 24-13-AD, 24-14-AD, 32-8110, 3256-26, 3256-6, 453017, 69-8980, 87-7270	Washer - Flat 1/2	6	
108	R3253-7	01-166-0030, 01-166-0080, 01-166-0290, 01-166-0810, 23-13-GD, 3253-7, 48-9380	Washer - Lock 1/2	6	
111	R75-3010-03	75-3010-03	Arm - Joint	3	
112	R83-4720-01	83-4720-01	Torsion Spring - RH	1	
113	R83-4730-01	83-4730-01	Torsion Spring - LH	1	
114	R3253-21	215-51, 30-8470, 3253-21, Jul-12	Washer - Lock 3/8	2	

All original equipment manufacturers names and part numbers are used for identification purposes only, and we are in no way implying that our products are original equipment parts. Prices subject to change without notice.