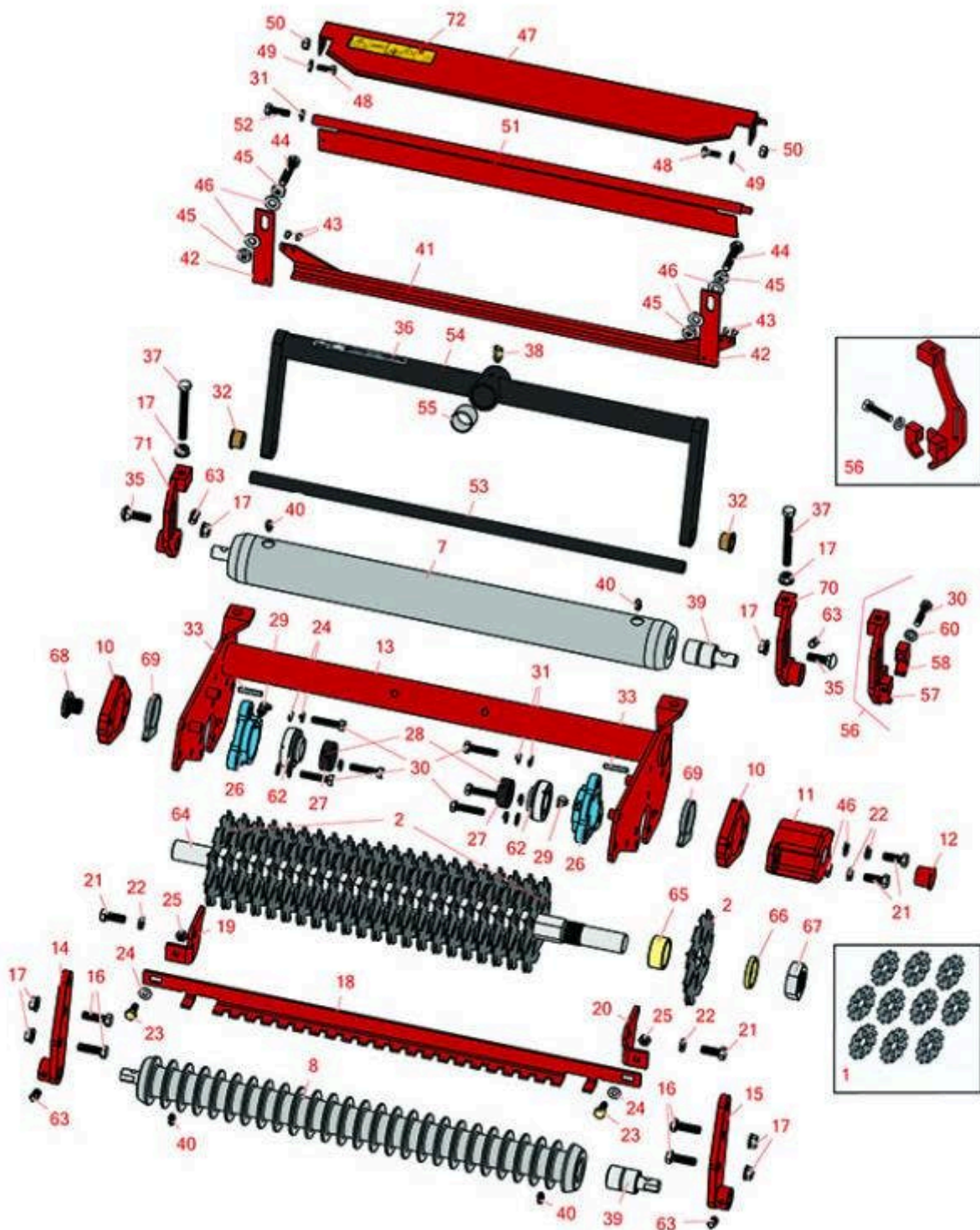
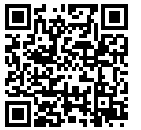




Replaces Toro Reelmaster 5300-D Parts

Verti-Cut Unit

Verti-Cut Reel & Frame



All original equipment manufacturers names and part numbers are used for identification purposes only, and we are in no way implying that our products are original equipment parts. Prices subject to change without notice.



Replaces Toro Reelmaster 5300-D Parts

Verti-Cut Unit

Verti-Cut Reel & Frame



Item No	R&R Part No.	OEM Part No.	Description	Qty Req	Order Quantity
---------	--------------	--------------	-------------	---------	----------------

Overhaul Kits

1	R106-6392	106-6392	Verti-Cut Blade Kit - 2mm Carbide Tipped	1	
---	------------------	----------	--	---	--

Tech Note: Includes Carbide Tipped Blades to rebuild 3 dethatching reels: 108 ea: R150209C Vertical Mower Blade:

Verti-Cut Blades

2	R17-1590	17-1590	Verti-Cut Blade	24	
2	R150109C	106-5422	Verti-Cut Blade - Carbide Tipped 1.2mm	24	
2	R150209C	106-6355	Verti-Cut Blade - Carbide Tipped 2mm	24	

R&R Rollers

7	R82-6680	82-6680	Roller - Smooth Tubular Steel	1	
8	R75-1520	75-1520	Roller - Grooved Machined Solid Steel	1	

Tech Note: Machined from solid steel this heavy weight roller uses greasable "water-pump" style bearings. :

Other Parts Available

10	R82-6810	82-6810, 82-6810-01	Plate - Blade Shaft Bearing	2	
11	R10-5080	10-5080, 10-5080-01	End - Cap Reel Brg Housing	1	
12	R12-0460	12-0460	Caplug - End Cap	1	
13	R82-6710	82-6710	Frame	1	
14	R82-6510	82-6510, 82-6510-01	Support - Right Hgt of Cut	1	
15	R82-6530	82-6530, 82-6530-01	Support - Left Height of Cut	1	

All original equipment manufacturers names and part numbers are used for identification purposes only, and we are in no way implying that our products are original equipment parts. Prices subject to change without notice.



Replaces Toro Reelmaster 5300-D Parts

Verti-Cut Unit

Verti-Cut Reel & Frame



Item No	R&R Part No.	OEM Part No.	Description	Qty Req	Order Quantity
16	R400264	01-150-0180, 01-178-0610, 20-48-AD, 20-48-AGD, 32-9160, 3224-3, 323-29, 323-7, 400264, 908035P	Bolt - Hex HD 3/8-16 x 1-1/4	4	
17	R3296-39	32127-25, 32128-36, 3290-357, 3296-17, 3296-22, 3296-39, 915663P, 99-7443	Locknut - 3/8-16 Nylon	8	
18	R82-6830	82-6830, 82-6830-01	Bar - Scraper Grooved Roller	1	
19	R82-6870	82-6870, 82-6870-01	Bracket - Scraper RH	1	
19	R82-6780	82-6780, 82-6780-01	Deflector - Rear	1	
20	R82-6880	82-6880, 82-6880-01	Bracket - Scraper LH	1	
21	R323-6	01-150-0010, 01-178-0608, 20-47-AD, 20-47-AGD, 3224-2, 323-6, 49-3510, 908034P, 908332	Bolt - Hex HD 3/8-16 x 1 GR5 YZ	4	
22	R3253-21	215-51, 30-8470, 3253-21, Jul-12	Washer - Lock 3/8	4	

All original equipment manufacturers names and part numbers are used for identification purposes only, and we are in no way implying that our products are original equipment parts. Prices subject to change without notice.



Replaces Toro Reelmaster 5300-D Parts

Verti-Cut Unit

Verti-Cut Reel & Frame



Item No	R&R Part No.	OEM Part No.	Description	Qty Req	Order Quantity
23	R322-3	01-150-1420, 01-178-0506, 20-24-AD, 20-24-AGD, 322-3, 48-9270, 513339, 908017P	Bolt - Hex HD 5/16-18 x 3/4	2	
24	R310266	3256-23, 3256-3, 3556-3	Washer - Flat 5/16 USS	8	
<i>Tech Note: Use with scraper & O.E.M. bearing housing:</i>					
24	R453009	01-166-0400, 24-10-BD, 24-9-AD, 32-9650, 3256-2, 3256-23, 3256-3, 3256-67, 3290-217, 3556-3, 4-2390, 7-0152	Washer - Flat 5/16 SAE	6	
<i>Tech Note: Use with R&R housings:</i>					
25	R3296-29	1-804256, 3290-357, 3296-29, 915662P	Locknut - 5/16-18 ESNA	2	
26	R76-2460	76-2460	Bearing - Flange	2	
27	R251-77	251-77	Collar - Bearing	2	
28	R3245-35	3245-35	Screw - Set 1/4-28 x 1/4	2	
29	R700414	302-11, 302-19, 302-4, 32-8170	Zerk - Grease 1/4-28 45 Deg	6	

All original equipment manufacturers names and part numbers are used for identification purposes only, and we are in no way implying that our products are original equipment parts. Prices subject to change without notice.



Replaces Toro Reelmaster 5300-D Parts

Verti-Cut Unit

Verti-Cut Reel & Frame



Item No	R&R Part No.	OEM Part No.	Description	Qty Req	Order Quantity
30	R322-7	01-150-0750, 01-150-0760, 01-178-0512, 20-28-AD, 20-28-AGD, 322-7, 3223-4	Bolt - Hex HD 5/16-18 x 1-1/2	6	
30	RP3018-1		Bolt - Hex HD 5/16-18 x 1-1/4	6	
31	R3253-4	01-166-0110, 01-166-0510, 23-10-GD, 24-7170, 30-8520, 3253-4, 42-9850, 48-9350, 48-9360, 48-9570, 68-9420, 99-7577	Washer - Lock 5/16 Zinc	7	
32	R3-1506	3-1506, 75-2160, Apr-50	Bushing - Bronze	2	
33	R32121-12	01-153-0150, 32121-12	Pin - Roll	2	
35	R3231-25	01-173-0610, 30-9970, 3231-25, 3231-3, 900064P	Bolt - Carriage 3/8-16 x 1-1/4	2	
36	R67-7960	27-2890, 62-5070, 67-7960	Decal - Warning	1	
37	R323-49	323-49	Bolt - HOC 3/8-16 x 3 1/2	2	
38	R302-60	302-60	Zerk - Grease 90 Deg.	1	
39	R75-1290	75-1290	Bearing - Roller	4	

All original equipment manufacturers names and part numbers are used for identification purposes only, and we are in no way implying that our products are original equipment parts. Prices subject to change without notice.



Replaces Toro Reelmaster 5300-D Parts

Verti-Cut Unit

Verti-Cut Reel & Frame



Item No	R&R Part No.	OEM Part No.	Description	Qty Req	Order Quantity
40	R302-5	21-6010, 302-11, 302-37, 302-47, 302-5, 302-57, 302-58, 302-6, 31-0300, 32-9660, 60-0800, 62-3880, 92-4181	Fitting - Grease	4	
41	R82-6740	82-6740	Scraper - Assy	1	
42	R82-6770	82-6770, 82-6770-01	Spring - Scraper	2	
43	R3269-4	3269-3, 3269-4	Rivet - Rear Deflector	4	
44	R323-53	323-53, 57-3210	Bolt - Hex HD 3/8-16 x 1-3/4	2	
45	R3218-3	01-191-0616, 22-13-AJKD, 3218-3, 915236P	Nut - 3/8-16 Jam	4	

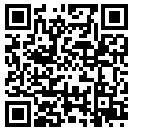
All original equipment manufacturers names and part numbers are used for identification purposes only, and we are in no way implying that our products are original equipment parts. Prices subject to change without notice.



Replaces Toro Reelmaster 5300-D Parts

Verti-Cut Unit

Verti-Cut Reel & Frame



Item No	R&R Part No.	OEM Part No.	Description	Qty Req	Order Quantity
46	R453011	01-166-0100, 01-166-0120, 01-166-0270, 01-166-0500, 01-166-0600, 01-166-0620, 132-4593, 2356-3, 237-12, 24-10-AD, 24-11-AD, 24-11-BD, 24-12-AD, 24-12-BD, 30-9310, 32-8190, 3256-24, 3256-3, 3256-36, 3256-4, 453011, 47-9950, 48-9220, 513458, 7-0052	Washer - Flat 3/8 SAE Y/Zinc	6	
47	R75-1840	75-1840	Shield - Grass	1	
48	R321-4	01-150-1030, 01-178-0406, 20-3-AGD, 321-4, 3222-1	Bolt - Hex HD 1/4-20 x 3/4	2	
49	R3256-22	24-9-BD, 3-1032, 3256-1, 3256-22, 93-0954, 93-0989	Washer - Flat 1/4 Yellow	2	

All original equipment manufacturers names and part numbers are used for identification purposes only, and we are in no way implying that our products are original equipment parts. Prices subject to change without notice.



Replaces Toro Reelmaster 5300-D Parts

Verti-Cut Unit

Verti-Cut Reel & Frame



Item No	R&R Part No.	OEM Part No.	Description	Qty Req	Order Quantity
50	R301504	2296-42, 301504, 32127-24, 32128-33, 32146-17, 3296-16, 3296-42, 3296-42 , 915661P	Locknut - ESNA 1/4-20	2	
52	R322-5	01-178-0508, 20-26-AD, 20-26-AGD, 30-9000, 322-5, 513341, 519755, 908019P, N/A	Bolt - Hex HD 5/16-18 x 1	1	
53	R75-1710	75-1710	Rod - Support Cutting Unit	1	
54	R82-6540	100-6193, 100-6194, 82-6540, 82-6540-03	Frame - Carrier Cutting Unit	1	
55	R67-1750	67-1750	Bushing - 1 Long	2	
56	R150433		Bracket - Quick Release V-Cut	1	
57	R150434		Bracket - Quick Release	1	
58	R150432		Clamp - Quick Release Bkt	1	
60	R446136		Washer - Lock 5/16 Zinc	1	
62	R251-337	251-337	Bearing - Ball	2	

All original equipment manufacturers names and part numbers are used for identification purposes only, and we are in no way implying that our products are original equipment parts. Prices subject to change without notice.



Replaces Toro Reelmaster 5300-D Parts

Verti-Cut Unit

Verti-Cut Reel & Frame



Item No	R&R Part No.	OEM Part No.	Description	Qty Req	Order Quantity
62	R71-1360	251-219, 251-253, 251-254, 251-320, 71-1360, 88-7880, 94-3405	Bearing	1	
63	R3242-2	3242-2	Screw - 5/16-18 x 1/2 Sq HD Set	4	
64	R82-6570	82-6570	Shaft - V-Cut	1	
65	R82-6600	82-6600	Spacer - V-Cut	23	
66	R17-1600	17-1600	Spacer - V-Cut Reel 1/4	2	
67	R3220-18	3220-18, 67-5840	Nut - Jam V-Cut Shaft	1	
68	R77-0340	77-0340	Nut - Splined Reel	1	
68	R93-1394	93-1394	Nut - Splined RH Thrd .812 Long	1	
69	R82-6820	82-6820	Spacer - Bearing	2	
70	R82-6650	82-6650, 82-6650-01	Bracket - LH Height of Cut	1	
71	R82-6630	82-6630, 82-6630-01	Bracket - RH Height of Cut	1	
72	R93-6688	93-6688	Decal - Warning	1	

All original equipment manufacturers names and part numbers are used for identification purposes only, and we are in no way implying that our products are original equipment parts. Prices subject to change without notice.