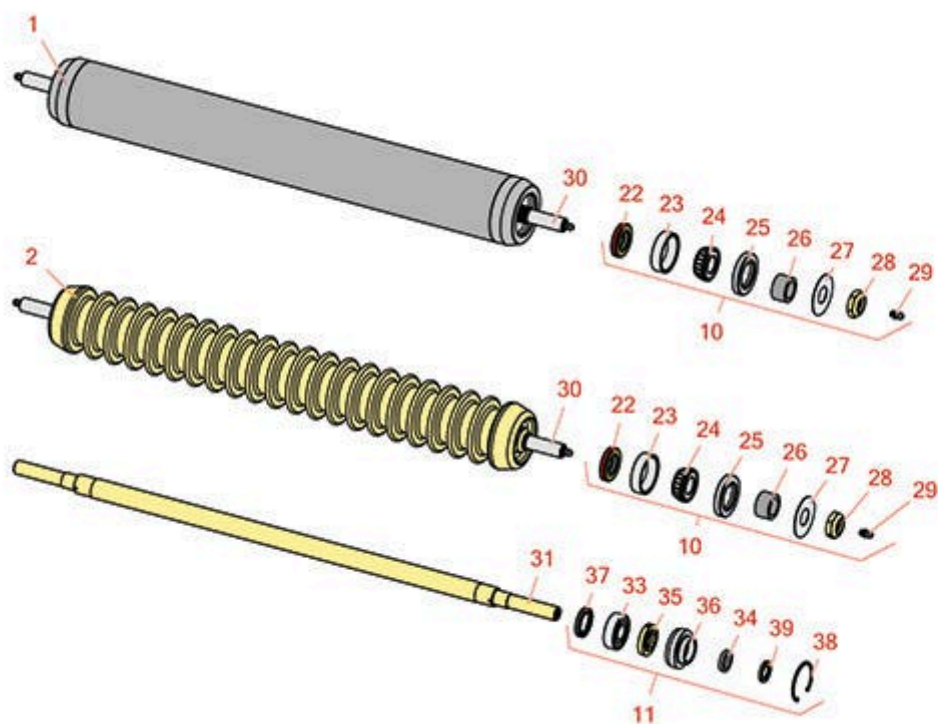




Replaces Toro Reelmaster 5500-D Parts

Cutting Unit - Models 03860, 03861 & 03862

Rollers



All original equipment manufacturers names and part numbers are used for identification purposes only, and we are in no way implying that our products are original equipment parts. Prices subject to change without notice.



Replaces Toro Reelmaster 5500-D Parts

Cutting Unit - Models 03860, 03861 & 03862
Rollers



Item No	R&R Part No.	OEM Part No.	Description	Qty Req	Order Quantity
---------	--------------	--------------	-------------	---------	----------------

R&R Rollers

1	R150728	99-5749	Roller - Smooth Heavy Duty Tubular Steel	1	
---	----------------	---------	--	---	--

Detail Description: Constructed with a through shaft, this heavy duty roller uses tapered bearings for extended life. Shaft length measures 26-3/4".:

2	R150730	100-9906	Roller - Grooved Cast Steel	1	
---	----------------	----------	-----------------------------	---	--

Detail Description: Constructed with cast steel body and a through shaft. This heavy duty roller uses tapered roller bearings for extended life. Shaft length measures 26-3/4".:

Overhaul Kits

10	R100141	100141	Overhaul Kit - Roller	0	
----	----------------	--------	-----------------------	---	--

Detail Description: Includes 2 ea: R253-117 Seals, R253-152 Seals, R254-78 Bearings, R254-79 Cups, R302-5 Grease Fittings, R3296-15 Locknuts, R5-4038 Wear Sleeves, R150504 Washers:

11	R106-9606	106-9606	Overhaul Kit - Roller	0	
----	------------------	----------	-----------------------	---	--

Detail Description: Include 2 ea: R343667 Bearings, R253-70 Seals, R32120-62 Retaining Rings, R93-1251 Seals, R93-1252 Seals, R93-2931 Washers, R93-3007 Seals:

Other Parts Available

22	R253-152	253-116, 253-152	Seal - Inner Roller	2	
----	-----------------	---------------------	---------------------	---	--

23	R254-79	01-103-0060, 01-103-0130, 1-633584, 252-106, 254-79, 32-7800, 32-9590	Cup - Bearing	2	
----	----------------	---	---------------	---	--

Detail Description: Use R254-79M installation mandrel to properly install race.:

All original equipment manufacturers names and part numbers are used for identification purposes only, and we are in no way implying that our products are original equipment parts. Prices subject to change without notice.



Replaces Toro Reelmaster 5500-D Parts

Cutting Unit - Models 03860, 03861 & 03862
Rollers



Item No	R&R Part No.	OEM Part No.	Description	Qty Req	Order Quantity
24	R254-78	01-102-0060, 01-102-0130, 1-633585, 254-78, 32-7790, 32-9580, 93-4813	Tapered Bearing Cone	2	
25	R253-117	253-117, 253-165	Seal - Outer Triple Lip	2	
26	R5-4038	5-4038, 51-2420	Sleeve - Wear Reel Shaft	2	
27	R150504	66-5620	Washer	2	
28	R3296-15	116-7306, 32118-5, 32127-23, 32127-47, 3296-15	Locknut - 3/4-16 Nylon Jam	2	
29	R302-5	21-6010, 302-11, 302-37, 302-47, 302-5, 302-57, 302-58, 302-6, 31-0300, 32-9660, 60-0800, 62-3880, 92-4181	Fitting - Grease	2	
30	R150729		Shaft - Roller	1	
31	R99-5748	99-5748	Shaft - Roller	1	
33	R343667	109966, 251-6, 38-7820	Bearing - Ball	2	
34	R253-70	253-70	Seal	2	

All original equipment manufacturers names and part numbers are used for identification purposes only, and we are in no way implying that our products are original equipment parts. Prices subject to change without notice.



Replaces Toro Reelmaster 5500-D Parts

*Cutting Unit - Models 03860, 03861 & 03862
Rollers*



Item No	R&R Part No.	OEM Part No.	Description	Qty Req	Order Quantity
35	R93-1251	93-1251	Seal	2	
36	R93-1252	93-1252	Seal - Outer	2	
37	R93-3007	93-3007	Seal	2	
38	R32120-62	32120-62	Ring - Retaining	2	
39	R93-2931	93-2931	Washer - Roller Seal	2	

All original equipment manufacturers names and part numbers are used for identification purposes only, and we are in no way implying that our products are original equipment parts. Prices subject to change without notice.