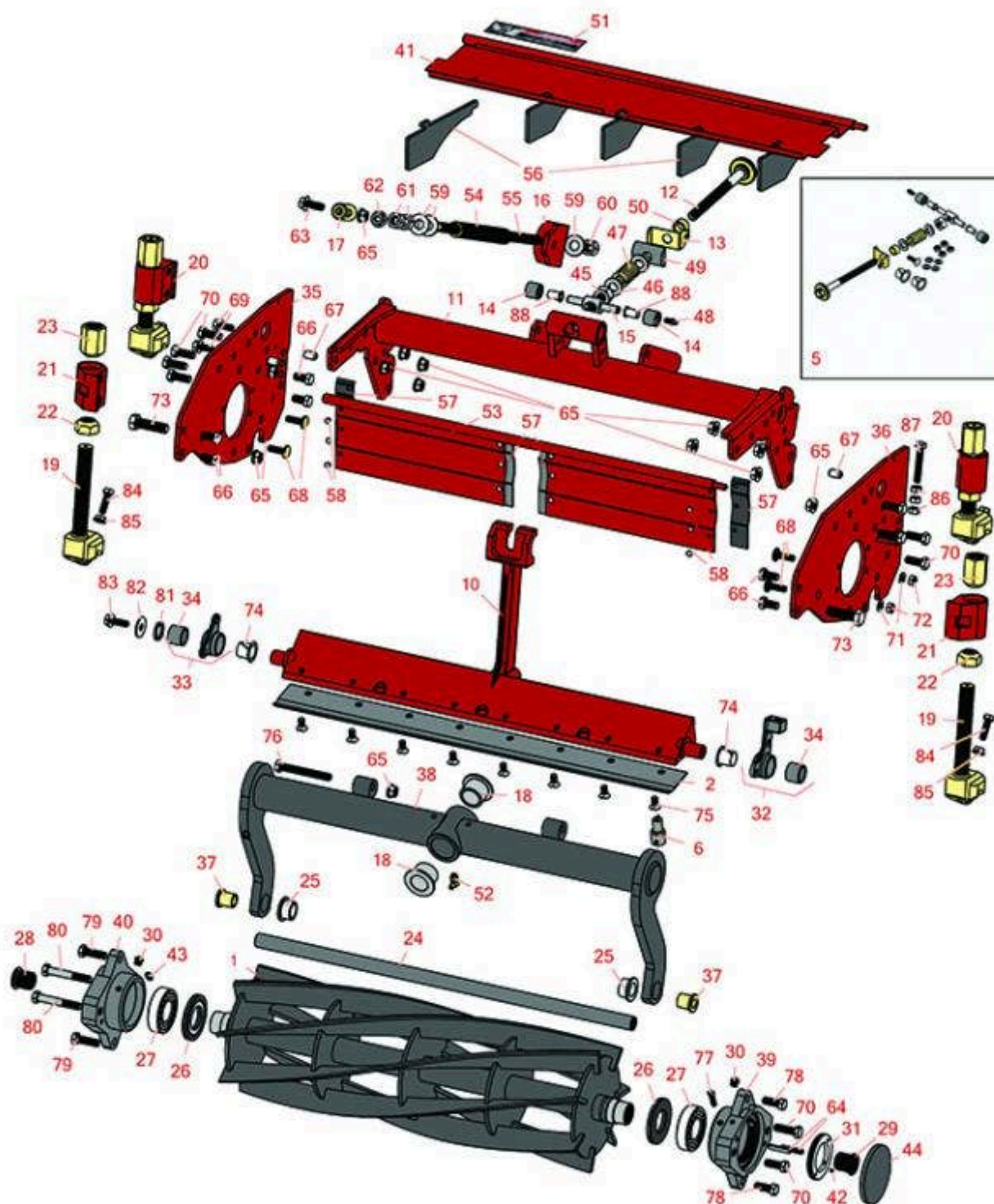




# Replaces Toro Reelmaster 5500-D Parts

Cutting Unit - Models 03860, 03861 & 03862

Reel & Bedknife



All original equipment manufacturers names and part numbers are used for identification purposes only, and we are in no way implying that our products are original equipment parts. Prices subject to change without notice.



# Replaces Toro Reelmaster 5500-D Parts

Cutting Unit - Models 03860, 03861 & 03862  
Reel & Bedknife



Item No	R&R Part No.	OEM Part No.	Description	Qty Req	Order Quantity
---------	--------------	--------------	-------------	---------	----------------

## R&R Reels, Lifetime Guaranteed

1	<b>R94-4337</b>	93-7520, 94-4337	Reel - 5 Blade	1	
---	-----------------	---------------------	----------------	---	--

*Detail Description: R&R Reel blades are expertly crafted from premium high carbon-boron alloy steel, heat-treated to perfectly complement both R&R and OEM bedknives. Each reel undergoes precision cylindrical grinding on bearing surfaces, followed by relief grinding for optimal performance. Advanced computer balancing ensures extended reel and bearing life. Backed by our lifetime guarantee against defects in materials and craftsmanship under normal use, R&R Reels deliver unmatched durability and cutting precision you can trust.:*

1	<b>R95-2770</b>	95-2770	Reel - 7 Blade	1	
---	-----------------	---------	----------------	---	--

*Detail Description: R&R Reel blades are expertly crafted from premium high carbon-boron alloy steel, heat-treated to perfectly complement both R&R and OEM bedknives. Each reel undergoes precision cylindrical grinding on bearing surfaces, followed by relief grinding for optimal performance. Advanced computer balancing ensures extended reel and bearing life. Backed by our lifetime guarantee against defects in materials and craftsmanship under normal use, R&R Reels deliver unmatched durability and cutting precision you can trust.:*

1	<b>R94-4338</b>	93-7521, 94-4338	Reel - 11 Blade	1	
---	-----------------	---------------------	-----------------	---	--

*Detail Description: R&R Reel blades are expertly crafted from premium high carbon-boron alloy steel, heat-treated to perfectly complement both R&R and OEM bedknives. Each reel undergoes precision cylindrical grinding on bearing surfaces, followed by relief grinding for optimal performance. Advanced computer balancing ensures extended reel and bearing life. Backed by our lifetime guarantee against defects in materials and craftsmanship under normal use, R&R Reels deliver unmatched durability and cutting precision you can trust.:*

## R&R Bedknives, Lifetime Guaranteed

2	<b>R93-9774</b>	93-9774	Bedknife - 5/16	1	
---	-----------------	---------	-----------------	---	--

*Detail Description: R&R Bedknives are manufactured from high carbon-boron alloy steel and then hardened to RC46-49 to match the temper of our reel blades and original equipment reels. Bedknives are surface ground on the top and front edge and straightened three times before being packaged with oil for rust prevention. All R&R Bedknives now have an increased front edge grind for added life. All R&R Bedknives are guaranteed against defects in material and workmanship under normal use for the life of the part.:*

2	<b>R98-3994</b>	98-3994	Bedknife - 3/8	1	
---	-----------------	---------	----------------	---	--

All original equipment manufacturers names and part numbers are used for identification purposes only, and we are in no way implying that our products are original equipment parts. Prices subject to change without notice.



## Replaces Toro Reelmaster 5500-D Parts

Cutting Unit - Models 03860, 03861 & 03862  
Reel & Bedknife



Item No	R&R Part No.	OEM Part No.	Description	Qty Req	Order Quantity
---------	--------------	--------------	-------------	---------	----------------

*Detail Description:* R&R Bedknives are manufactured from high carbon-boron alloy steel and then hardened to RC46-49 to match the temper of our reel blades and original equipment reels. Bedknives are surface ground on the top and front edge and straightened three times before being packaged with oil for rust prevention. All R&R Bedknives now have an increased front edge grind for added life. All R&R Bedknives are guaranteed against defects in material and workmanship under normal use for the life of the part.:

2	<b>R104-1810</b>	104-1810	Bedknife - High Cut	1	
---	------------------	----------	---------------------	---	--

*Detail Description:* R&R Bedknives are manufactured from high carbon-boron alloy steel and then hardened to RC46-49 to match the temper of our reel blades and original equipment reels. Bedknives are surface ground on the top and front edge and straightened three times before being packaged with oil for rust prevention. All R&R Bedknives now have an increased front edge grind for added life. All R&R Bedknives are guaranteed against defects in material and workmanship under normal use for the life of the part.:

### R&R Razor Tool Steel Bedknives, Lifetime Guaranteed

2	<b>R108-9095</b>	108-9095, 137-0833	Bedknife - Razor Tool Steel - 22 High Cut	0	
---	------------------	-----------------------	---	---	--

*Detail Description:* R&R Razor bedknives are manufactured from premium alloy tool steel steel and then hardened to RC48-51 to match the temper of our Razor reel blades and original equipment premium series reels. Bedknives are surface ground on the top and front edge and specially packaged for rust prevention. All R&R Bedknives now have an increased front edge grind for added life. All R&R Bedknives are guaranteed against defects in material and workmanship under normal use for the life of the part. You can expect up to double the life over standard bedknives.:

### Overhaul Kits & Service Tools

5	<b>R106-9605</b>	106-9605	Overhaul Kit - Spa Bedbar	1	
---	------------------	----------	---------------------------	---	--

*Detail Description:* Includes 1 ea: R302-18, R3296-62, R57-5260, R93-2959, R93-7501, R95-0772, R95-8752, R95-8877; 2 ea: R453017, R52-2890, R62-5510, R93-7502; & 4 ea: R3230-2, R3256-74, R3296-29:

6	<b>R51-0880</b>	51-0880	Bedknife Screw Driver Tool	0	
---	-----------------	---------	----------------------------	---	--

*Detail Description:* Easily install and remove bed knife screws with the help of a ratchet with 3/8" drive. Tool manufactured with hardened alloy steel.:

### Other Parts Available

All original equipment manufacturers names and part numbers are used for identification purposes only, and we are in no way implying that our products are original equipment parts. Prices subject to change without notice.



## Replaces Toro Reelmaster 5500-D Parts

Cutting Unit - Models 03860, 03861 & 03862  
Reel & Bedknife



Item No	R&R Part No.	OEM Part No.	Description	Qty Req	Order Quantity
10	<b>R99-8698</b>	93-2854, 95-3458, 99-8698-01	Bed Bar	1	
11	<b>R100-4994-01</b>	100-4994-01, 98-7971-01	Frame-Reel	1	
12	<b>R95-8877</b>	106-7536, 93-2957, 95-2762, 95-8877	Handle - Bed Bar Adjustment	1	
13	<b>R95-8752</b>	93-9767, 95-8752	Arm - Spring	1	
14	<b>R62-5510</b>	52-2870, 62-5510	Bushing	2	
15	<b>R57-5260</b>	107-7409, 57-5260	Pivot - 1/2-20 - Bed Bar	1	
16	<b>R100-4992</b>	100-4992	Bracket-Spring	1	
17	<b>R99-8662</b>	99-8662	Tube - Spring	1	
18	<b>R94-1291</b>	94-1291	Bushing - Flanged	2	
19	<b>R100-2263</b>	100-2263	Bracket - Roller Adj	4	
20	<b>R100-2262-01</b>	100-2262-01	Bracket - HOC Rear	2	
21	<b>R100-2261-01</b>	100-2261-01	Bracket - HOC Front	2	
22	<b>R95-2789</b>	95-2789	Nut - Roller Adj Short	4	
23	<b>R95-2790</b>	95-2790	Nut - Roller Adj Long	4	
24	<b>R99-8693</b>	99-8693	Rod-Support	1	
25	<b>R93-2877</b>	93-2877	Bushing - Flanged	2	
26	<b>R107-4028</b>	105-6757, 107-4028	Seal - Grease	2	

All original equipment manufacturers names and part numbers are used for identification purposes only, and we are in no way implying that our products are original equipment parts. Prices subject to change without notice.



## Replaces Toro Reelmaster 5500-D Parts

Cutting Unit - Models 03860, 03861 & 03862  
Reel & Bedknife



Item No	R&R Part No.	OEM Part No.	Description	Qty Req	Order Quantity
27	<b>R93-2489</b>	93-2489	Bearing - Reel	2	
28	<b>R94-2732</b>	94-2732	Insert - Threaded RH	1	
29	<b>R94-2733</b>	94-2733	Insert - Threaded LH	1	
30	<b>R170714</b>	302-34, 302-39, 62-3520	Fitting - Pressure Relief	2	
31	<b>R93-9786</b>	105-6756, 93-9786, 95-2793, 99-5672	Nut - Bearing Adj Incl R3245-42	1	
32	<b>R100-3381</b>	100-3381	Hub - Pivot LH Bed Bar	1	
<i>Detail Description: Includes R93-7501:</i>					
33	<b>R100-3380</b>	100-3380	Hub - Pivot RH Bed Bar	1	
<i>Detail Description: Includes R93-7501:</i>					
34	<b>R93-7501</b>	93-7501	Bushing	2	
35	<b>R100-2267-01</b>	100-2267-01	Sideplate-RH	1	
36	<b>R100-2268-01</b>	100-2268-01	LH Sideplate Assy	1	
37	<b>R100-2276</b>	100-2276	Spacer-Frame	2	
38	<b>R100-8011</b>	100-8011, 98-7972, 98-7973, 99-2457	Carrier Frame Assy	1	
39	<b>R105-6755</b>	105-6755	Housing-Bearing - LH	1	
40	<b>R105-6759</b>	105-6759	Housing-Bearing - RH	1	
41	<b>R100-9900</b>	100-2285-01, 100-9900	Grass Shield - Front	1	
42	<b>R3245-42</b>	3245-42	Screw - Set 8/32 x 1/4	1	

All original equipment manufacturers names and part numbers are used for identification purposes only, and we are in no way implying that our products are original equipment parts. Prices subject to change without notice.



## Replaces Toro Reelmaster 5500-D Parts

Cutting Unit - Models 03860, 03861 & 03862

Reel & Bedknife



Item No	R&R Part No.	OEM Part No.	Description	Qty Req	Order Quantity
43	R302-5	21-6010, 302-11, 302-37, 302-47, 302-5, 302-57, 302-58, 302-6, 31-0300, 32-9660, 60-0800, 62-3880, 92-4181	Fitting - Grease	2	
44	R94-2703	94-2703	Plug - Plastic Spindle Housing	1	
45	R3296-62	3296-62	Locknut - 1/2-20 LH Jam	1	
46	R29-8910-01	29-8910	Washer - Flat 1/2	2	
47	R95-0772	93-2915, 95-0772	Spring - Bed Bar Adjuster	1	
48	R302-18	302-18	Zerk - Grease Press Style	1	
49	R93-2892	93-2892	Pivot - Plastic - Bed Bar	1	
50	R93-2959	93-2959	Spacer - Bed Bar Assy	1	
51	R67-7960	27-2890, 62-5070, 67-7960	Decal - Warning	1	
52	R302-60	302-60	Zerk - Grease 90 Deg.	1	
53	R100-2289	100-2289	Rear Grass Shield Assy	1	
<i>Detail Description: Incl: 4 ea. R98-3999 and 12 ea. R700382:</i>					
54	R92-7768	86-0080, 92-7768	Spring-Compression	1	
55	R99-8661	99-8661	Rod-Spring	1	

All original equipment manufacturers names and part numbers are used for identification purposes only, and we are in no way implying that our products are original equipment parts. Prices subject to change without notice.



## Replaces Toro Reelmaster 5500-D Parts

Cutting Unit - Models 03860, 03861 & 03862

Reel & Bedknife



Item No	R&R Part No.	OEM Part No.	Description	Qty Req	Order Quantity
56	<b>R100-2287</b>	100-2287	Deflector-Shield,	5	
57	<b>R98-3999</b>	98-3999	Flap-Side-Rubber	4	
58	<b>R700382</b>	700382	Rivet - Guard	12	
59	<b>R87-7270-01</b>	87-7270	Washer - Flat 1/2	2	
60	<b>RF5003</b>	32127-29, 32131-5, 32132-5, 3296-23	Locknut - ESNA 1/2-13	1	
61	<b>R443818</b>	01-191-0813, 3218-18, 3218-5	Nut - 1/2-13 Hex Jam Zinc	3	
62	<b>R32128-43</b>	30-8990, 32128-43, 3290-357	Nut - Flanged Whiz - 3/8-16	1	
63	<b>R3234-18</b>	3234-18	Screw-HHF	1	
64	<b>R32121-69</b>	119-4033, 120-8095, 32121-69	Pin - Roll 1/4 x 1-1/4	4	
65	<b>R3296-39</b>	32127-25, 32128-36, 3290-357, 3296-17, 3296-22, 3296-39, 915663P, 99-7443	Locknut - 3/8-16 Nylon	11	
66	<b>R400258</b>	01-150-0800, 01-178-0600, 01-178-0606, 20-45-AD, 31-0200, 31-9910, 3224-1, 323-4	Bolt - Hex HD 3/8-16 x 3/4	8	

All original equipment manufacturers names and part numbers are used for identification purposes only, and we are in no way implying that our products are original equipment parts. Prices subject to change without notice.





## Replaces Toro Reelmaster 5500-D Parts

Cutting Unit - Models 03860, 03861 & 03862

Reel & Bedknife



Item No	R&R Part No.	OEM Part No.	Description	Qty Req	Order Quantity
67	R32121-36	32121-36	Pin-Spring	4	
68	R3230-2	01-173-0508, 25-25-AGD, 3230-16, 3230-2, 513624, 513633, 513635, 900038P	Bolt - Carriage	4	
69	R3234-5	3234-5, 62-3310	Bolt - 5/16-18x3/4 Hx Ser Was HD	2	
70	R3234-11	3234-11	Bolt - Hex Washer HD	8	
71	R3256-74	3256-74	Washer - Flat	4	
72	R3296-29	1-804256, 3290-357, 3296-29, 915662P	Locknut - 5/16-18 ESNA	4	
73	R325-7	01-150-0380, 01-178-0814, 3226-3, 325-7, 48-9490	Bolt - 1/2-13 x 1 3/4 Hex HD Gr 5	0	
74	R93-7502	93-7502	Bushing - Flanged Nylon	2	
75	R150476	3-3816, 3-6462, 57-4910	Screw - Bedknife 5/16-18 x 5/8	8	
76	R99-8664	99-8664	Bolt - Hx HD	1	
77	R105-6758	105-6758	Setscrew-Sqh	1	

All original equipment manufacturers names and part numbers are used for identification purposes only, and we are in no way implying that our products are original equipment parts. Prices subject to change without notice.





## Replaces Toro Reelmaster 5500-D Parts

Cutting Unit - Models 03860, 03861 & 03862  
Reel & Bedknife



Item No	R&R Part No.	OEM Part No.	Description	Qty Req	Order Quantity
78	R323-6	01-150-0010, 01-178-0608, 20-47-AD, 20-47-AGD, 3224-2, 323-6, 49-3510, 908034P, 908332	Bolt - Hex HD 3/8-16 x 1 GR5 YZ	0	
79	R400264	01-150-0180, 01-178-0610, 20-48-AD, 20-48-AGD, 32-9160, 3224-3, 323-29, 323-7, 400264, 908035P	Bolt - Hex HD 3/8-16 x 1-1/4	4	
80	R101526	01-150-0970, 01-178-0620, 20-53-AGD, 321-11, 3224-8, 323-11, 323-12, 323-31, 323-4, 323-47	Bolt - Hex HD 3/8-16 x 2-1/2 GR5	2	
81	R93-7510	93-7510	Ring - Quad RH Pivot Hub	1	
82	R3256-82	3256-82	Washer - Flat	1	
83	R33104-020	33104-020	Bolt - Hex Washer HD	1	
84	R322-16	322-16, Apr-00	Bolt - Hex HD 5/16-18 x 1-1/8	4	
85	R445722	30-8980, 32128-2, 32128-20, 32128-20	Nut - Serrated Washer	4	

All original equipment manufacturers names and part numbers are used for identification purposes only, and we are in no way implying that our products are original equipment parts. Prices subject to change without notice.



## Replaces Toro Reelmaster 5500-D Parts

*Cutting Unit - Models 03860, 03861 & 03862  
Reel & Bedknife*



Item No	R&R Part No.	OEM Part No.	Description	Qty Req	Order Quantity
86	<b>R14M7298</b>	104-2612, 33004-00	Nut - 8mm x 1.25 Flanged	3	
87	<b>R94-3489</b>	75-8530, 94-3489	Bolt - Hex HD M8 x 50	1	
88	<b>R52-2890</b>	52-2890	Bushing - Flanged	2	

All original equipment manufacturers names and part numbers are used for identification purposes only, and we are in no way implying that our products are original equipment parts. Prices subject to change without notice.