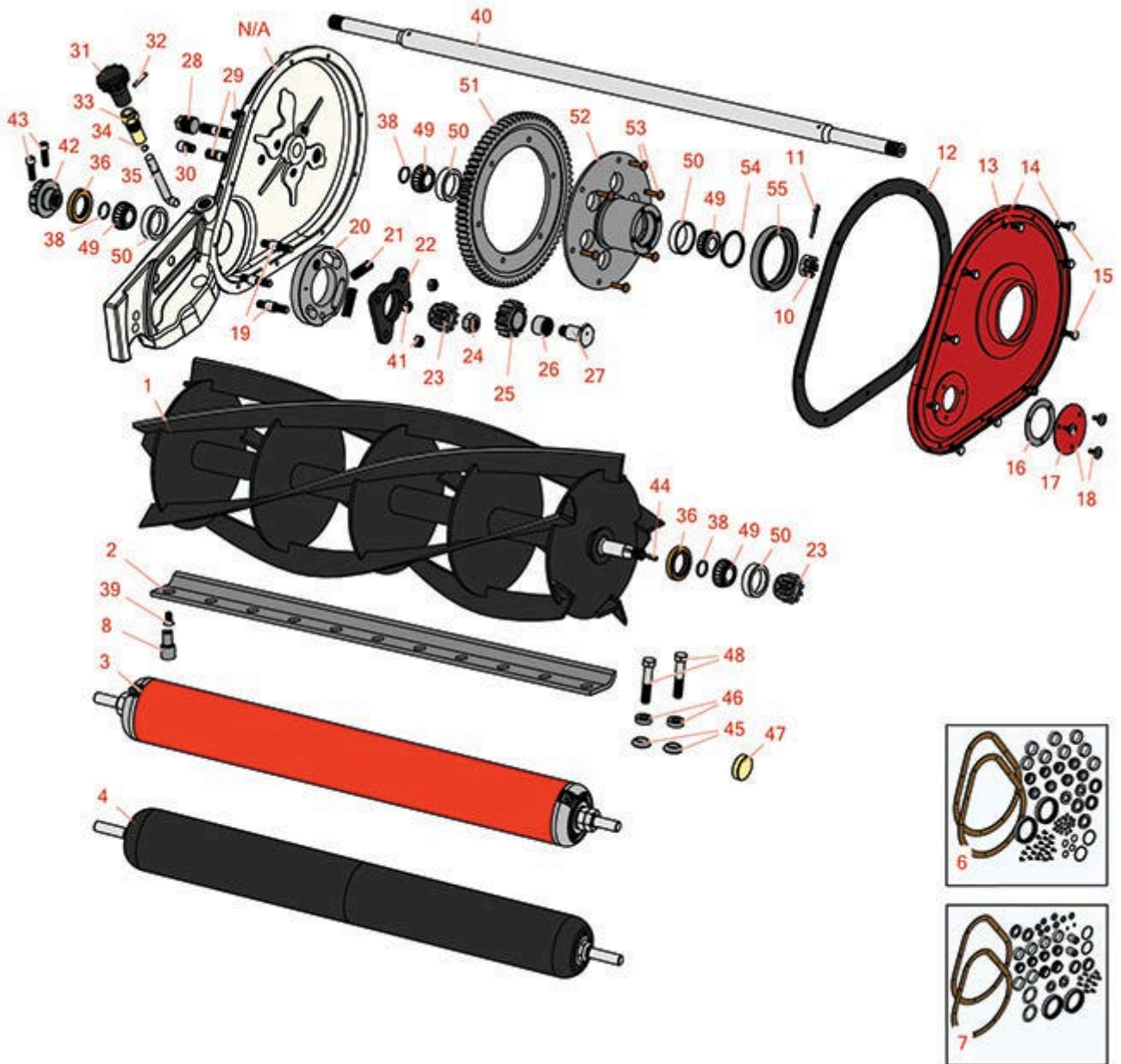




# Replaces Toro Roughmaster Fairway

## Parts

Cutting Unit  
Reel & Bedknife



All original equipment manufacturers names and part numbers are used for identification purposes only, and we are in no way implying that our products are original equipment parts. Prices subject to change without notice.



# Replaces Toro Roughmaster Fairway

## Parts

Cutting Unit  
Reel & Bedknife



Item No	R&R Part No.	OEM Part No.	Description	Qty Req	Order Quantity
---------	--------------	--------------	-------------	---------	----------------

### R&R Reels, Lifetime Guaranteed

1	R26-2400		Reel - 5 Blade	1	
---	----------	--	----------------	---	--

*Detail Description: R&R Reel blades are expertly crafted from premium high carbon-boron alloy steel, heat-treated to perfectly complement both R&R and OEM bedknives. Each reel undergoes precision cylindrical grinding on bearing surfaces, followed by relief grinding for optimal performance. Advanced computer balancing ensures extended reel and bearing life. Backed by our lifetime guarantee against defects in materials and craftsmanship under normal use, R&R Reels deliver unmatched durability and cutting precision you can trust.:*

### R&R Bedknives, Lifetime Guaranteed

2	R150453	3-4277	Bedknife - Single Lip	1	
---	---------	--------	-----------------------	---	--

*Detail Description: R&R Bedknives are manufactured from high carbon-boron alloy steel and then hardened to RC46-49 to match the temper of our reel blades and original equipment reels. Bedknives are surface ground on the top and front edge and straightened three times before being packaged with oil for rust prevention. All R&R Bedknives now have an increased front edge grind for added life. All R&R Bedknives are guaranteed against defects in material and workmanship under normal use for the life of the part.:*

### R&R Rollers

3	R8-3990	2-0949, 3-0321, 5-3939, 8-3990, Apr-49, Feb-39, May-26	Roller - Smooth Heavy Duty Tubular Steel	1	
---	---------	--	--	---	--

*Detail Description: Constructed with a through shaft, this heavy duty roller uses tapered bearings for extended life.:*

4	R1503850		Roller - Smooth UHMW Polyethylene	1	
---	----------	--	-----------------------------------	---	--

*Detail Description: Machined from solid UHMW, this low maintenance roller uses a 1" solid stainless steel shaft and requires no grease. UHMW material prevents build-up of debris.:*

### Overhaul Kits

6	R255-100	255-100	Overhaul Kit - Cutting Unit	1	
---	----------	---------	-----------------------------	---	--

All original equipment manufacturers names and part numbers are used for identification purposes only, and we are in no way implying that our products are original equipment parts. Prices subject to change without notice.



# Replaces Toro Roughmaster Fairway

## Parts

Cutting Unit  
Reel & Bedknife



Item No	R&R Part No.	OEM Part No.	Description	Qty Req	Order Quantity
---------	--------------	--------------	-------------	---------	----------------

*Detail Description: Includes 20 ea.: R3252-4 Screws, R3255-7 Washers; 8 ea.: R254-78 Bearings, R254-79 Bearing Cups; 2 ea.: R237-38 O-rings, R237-54 O-rings, R253-101 Seals, R253-117 Seals, R253-122 seals, R3-5002 Gaskets, R5-3820 Seals; 1 ea: R237-58 O-ring & R5-1458 Gasket:*

7	<b>R13-3629</b>	13-3629	Overhaul Kit - Cutting Unit	1
---	-----------------	---------	-----------------------------	---

*Detail Description: Includes 11 ea.: R150476 Screws; 4 ea.: R254-78 Bearings, R254-79 Bearing Cups, R257-5 Thrust Washers; 2 ea.: R19-9750 Bushings, R237-21 O-rings, R237-38 O-rings, R253-101 Seals, R253-117 Seals, R253-122 Seals, R253-146 Seals, R254-72 Bearing Cups, R254-94 Bearings, R257-6 Thrust Washers, R3-5002 Gaskets, R47-5640 Spacers, & R5-1458 Gaskets:*

### Service Tools

8	<b>R51-0880</b>	51-0880	Bedknife Screw Driver Tool	0
---	-----------------	---------	----------------------------	---

*Detail Description: Easily install and remove bed knife screws with the help of a ratchet with 3/8" drive. Tool manufactured with hardened alloy steel.:*

### Other Parts Available

10	<b>R5-1462</b>	5-1462	Nut - Castle	2
----	----------------	--------	--------------	---

11	<b>R3272-16</b>	3272-16	Pin - Cotter 5/32 x 1-1/4	2
----	-----------------	---------	---------------------------	---

12	<b>R3-5002</b>	106-5409, 3-5002, Mar-97	Gasket - Cork Fits Side Case	2
----	----------------	--------------------------------	------------------------------	---

13	<b>R47-4060</b>	3-5430, 3-5440, 47-4060, 47-4060-01	Cover - Gear Housing	2
----	-----------------	--	----------------------	---

14	<b>R3255-7</b>	3255-7, 76-5310	Washer - Lock 1/4 Ext Star Z	20
----	----------------	--------------------	------------------------------	----

15	<b>R3252-4</b>	32140-3, 32140-94, 3252-4	Screw - Cover	20
----	----------------	---------------------------------	---------------	----

16	<b>R5-1458</b>	106-5408, 5-1458	Gasket - Insp Plate	2
----	----------------	---------------------	---------------------	---

17	<b>R5-1460</b>	5-1460	Cover - Inspection Plate	2
----	----------------	--------	--------------------------	---

All original equipment manufacturers names and part numbers are used for identification purposes only, and we are in no way implying that our products are original equipment parts. Prices subject to change without notice.



# Replaces Toro Roughmaster Fairway

## Parts

*Cutting Unit  
Reel & Bedknife*



Item No	R&R Part No.	OEM Part No.	Description	Qty Req	Order Quantity
18	<b>R11-8960</b>	11-8960	Screw - w/Washer/Neoprene	6	
19	<b>R3-7445</b>	3-7445	Stud	6	
20	<b>R3-4160</b>	3-4160	Ring - Carrier LH	1	
20	<b>R3-4170</b>	3-4170	Ring - Carrier RH	1	
21	<b>R3-3251</b>	3-3251	Spring	2	
22	<b>R3-3996</b>	3-3996	Retainer - Ratchet Ring	1	
22	<b>R3-3997</b>	3-3997	Retainer - Ratchet Ring	1	
23	<b>R5-1463</b>	5-1463, 5-1483	Gear - Pinion	2	
24	<b>R3-8386</b>	3-8386	Nut - Lefthand Thread	2	
25	<b>R12-1190</b>	12-1190	Gear - Ratchet	2	
26	<b>R252-6</b>	252-6	Bearing - Pinion Gear	2	
27	<b>R3-9116</b>	3-9116	Stud - Ratchet Gear RH Thrd	1	
27	<b>R3-9117</b>	3-9117	Stud - Ratchet Gear LH Thrd	1	
28	<b>R281-3</b>	281-3, 30-1090, 58-7250	Plug - Pipe 1/2	2	
29	<b>R3-7446</b>	3-7446	Stud - Spacer Tube	2	
30	<b>R302-14</b>	302-14	Fitting - Relief	2	
31	<b>R5-1464</b>	5-1464, 5-1464-03	Handle - Throwout	2	
32	<b>R3283-1</b>	3283-1	Pin - Drive Lock	2	
33	<b>R3-3892</b>	3-3892, Nov-30	Sleeve - Throwout	2	

All original equipment manufacturers names and part numbers are used for identification purposes only, and we are in no way implying that our products are original equipment parts. Prices subject to change without notice.



# Replaces Toro Roughmaster Fairway

## Parts

Cutting Unit  
Reel & Bedknife



Item No	R&R Part No.	OEM Part No.	Description	Qty Req	Order Quantity
34	<b>R237-21</b>	237-21, 327-21	O-Ring	2	
35	<b>R3-3891</b>	3-3891	Finger - Throwout LH	1	
35	<b>R3-3904</b>	3-3904	Finger - Throwout RH	1	
36	<b>R5-3820</b>	253-102, 253-16, 5-3820	Seal - Oil Reel	2	
38	<b>R237-54</b>	237-35, 237-46, 237-54, 253-35, 353-308	O-Ring - Small	2	
39	<b>R150475</b>	3-6462	Screw - Bedknife Stainless 5/16-18 x 5/8	11	
<i>Detail Description: Pre-Packaged in bags of 50:</i>					
39	<b>R150476</b>	3-3816, 3-6462, 57-4910	Screw - Bedknife 5/16-18 x 5/8	11	
40	<b>R3-4275</b>	3-4275	Shaft - Axle	1	
41	<b>R3296-6</b>	01-192-0280, 32118-2, 32127-14, 32127-15, 32146-12, 32146-6, 3296-32, 3296-6	Locknut - 3/8-24 ESNA	6	
42	<b>R2-4219</b>	2-4219	Nut - Adjustment Reel Brg	1	
43	<b>R3273-14</b>	3273-13, 3273-14	Screw - 5/16-24 x 1 Skt HD Cap Zinc	2	
44	<b>R3257-3</b>	3257-3	Key - Woodruff	2	
45	<b>R3-7442</b>	3-7442	Washer - Bottom Bed Bar	4	

All original equipment manufacturers names and part numbers are used for identification purposes only, and we are in no way implying that our products are original equipment parts. Prices subject to change without notice.



# Replaces Toro Roughmaster Fairway

## Parts

Cutting Unit  
Reel & Bedknife



Item No	R&R Part No.	OEM Part No.	Description	Qty Req	Order Quantity
46	<b>R3-7443</b>	3-7443	Washer - Top Bed Bar Pivot	4	
47	<b>R5-1461</b>	5-1461	Pivot - Bed Bar	2	
48	<b>R5-3425</b>	5-3425, Mar-63	Bolt - Stainless 7/16-20	4	
49	<b>R254-78</b>	01-102-0060, 01-102-0130, 1-633585, 254-78, 32-7790, 32-9580, 93-4813	Tapered Bearing Cone	6	
50	<b>R254-79</b>	01-103-0060, 01-103-0130, 1-633584, 252-106, 254-79, 32-7800, 32-9590	Cup - Bearing	6	
<i>Detail Description: Use R254-79M installation mandrel to properly install race.:</i>					
51	<b>R5-1457</b>	5-1457	Gear - Main	2	
52	<b>R3-4001</b>	3-4001, 95-1828	Hub - Ring Gear with Rivets	2	
53	<b>R3262-3</b>	3262-3	Rivet - Ring Gear Hub	12	
54	<b>R237-38</b>	237-38, 7-1393	O-Ring - Large	2	
55	<b>R253-101</b>	253-101, 253-13, 253-25, 253-4, 47-4500, 84-8200	Seal - Oil Cover	2	

All original equipment manufacturers names and part numbers are used for identification purposes only, and we are in no way implying that our products are original equipment parts. Prices subject to change without notice.