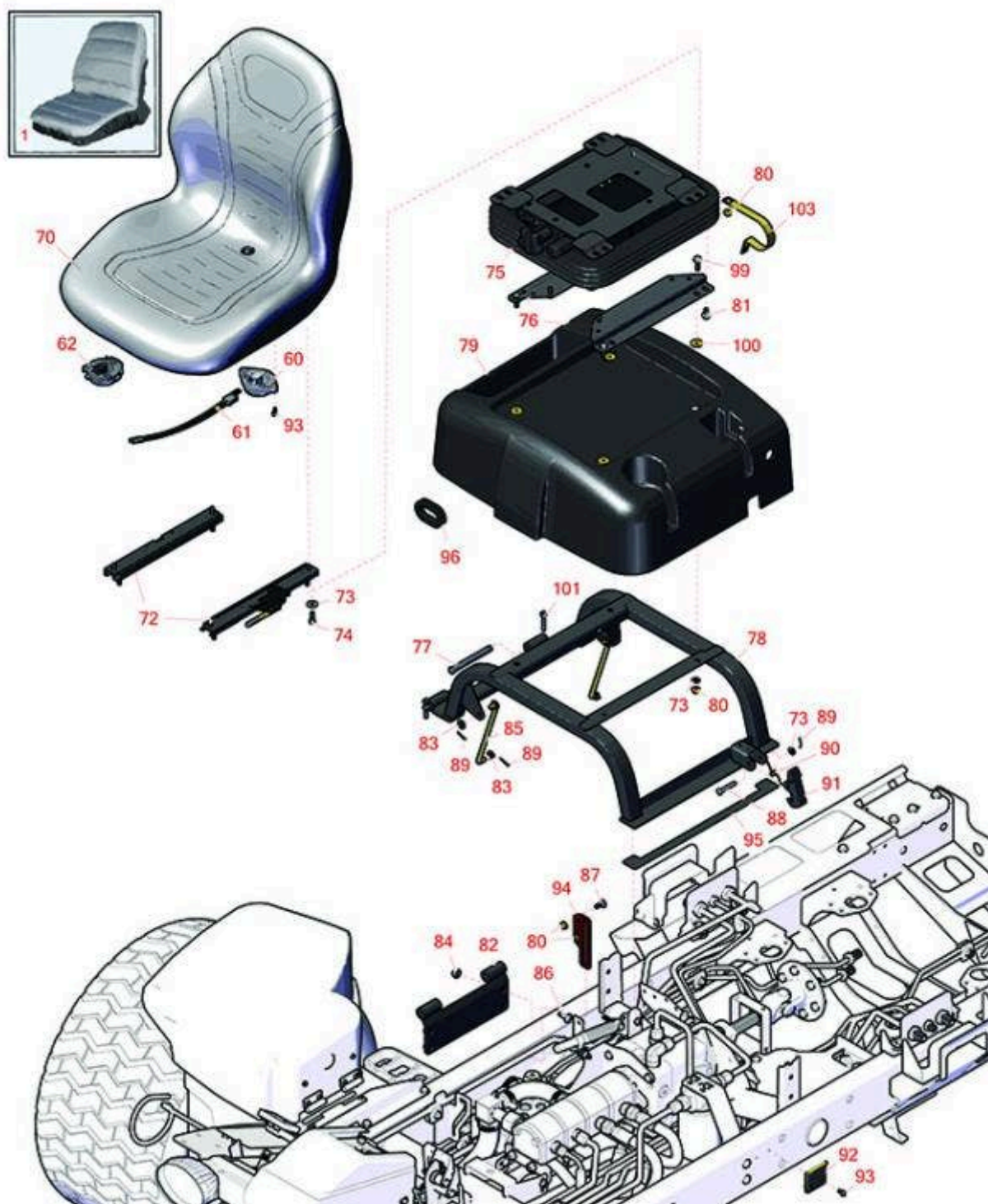




# Replaces Toro Reelmaster 5510-D Parts

*Traction Unit with Yanmar Engine - Models  
Seat*



All original equipment manufacturers names and part numbers are used for identification purposes only, and we are in no way implying that our products are original equipment parts. Prices subject to change without notice.



# Replaces Toro Reelmaster 5510-D Parts

Traction Unit with Yanmar Engine - Models  
Seat



Item No	R&R Part No.	OEM Part No.	Description	Qty Req	Order Quantity
---------	--------------	--------------	-------------	---------	----------------

## Overhaul Kits and Service Tools

1	<b>R120-5179</b>	120-5179	Large Seat Cover - Gray	1	
---	------------------	----------	-------------------------	---	--

## Gauges and Controls

60	<b>R92-6282</b>	62-6282, 92-6282	Switch - Kill - Seat	1	
61	<b>R108-8657</b>	108-8657	Harness-Wire, Seat	1	
62	<b>R151541</b>	R&R ON, LY	Delta Seat Switch - Twist Mount 1 Pole Normally Open	1	

## Other Parts Available

70	<b>RMXB200GY</b>	100-3187, 104-4620, 104-7620, 21-4880, 351-59, 351-76, 49-8130, 63-9410, 66-5400, 75-9190, 750105, 92-6280, MXB200GY	Milsco Seat XB200 - Grey	1	
----	------------------	--	--------------------------	---	--

**Tech Note:** This seat will not accept seat belts:

**Detail Description:** The Milsco XB200 high back seat features a comfortable vacuum formed, waterproof vinyl cover with central drain hole. Ergonomic foam cushion provides operator comfort. Cover will not crack or peel. Rugged blow-molded plastic frame construction. Allows for Twist-in operator presence switch. Seat: 19in W x 24in D x 21in H. Multiple pre-drilled mounting patterns. Grey. Made in U.S.A. <BR>Please note: Due to excessive air freight charges, this item will be shipped ground freight.:

All original equipment manufacturers names and part numbers are used for identification purposes only, and we are in no way implying that our products are original equipment parts. Prices subject to change without notice.



# Replaces Toro Reelmaster 5510-D Parts

Traction Unit with Yanmar Engine - Models  
Seat



Item No	R&R Part No.	OEM Part No.	Description	Qty Req	Order Quantity
72	R150224	106-7847 & 107-7959, 107-7959, 119-0654 & 119-0655, 133-8896, 192-8990 & 92-8991, 92-8990, 92-8990/92-8991, 92-8991	Adjusters - Seat (Set of 2)	1	
73	R453009	01-166-0400, 24-10-BD, 24-9-AD, 32-9650, 3256-2, 3256-23, 3256-3, 3256-67, 3290-217, 3556-3, 4-2390, 7-0152	Washer - Flat 5/16 SAE	9	
74	R434024	3274-12	Bolt - Soc HD Cap 5/16-18 x 3/4	4	
75	R110-8851	110-8851	Mechanical Suspension - Seat	1	
76	R108-6590-03	108-6590-03	Seat Bracket - Lower	2	
77	R283-83	283-83, 42194, 93-5343	Pin - Clevis	2	
78	R108-7577-03	108-7577-03	Seat Base Assy	1	
79	R108-1757	108-1757	Cover-Seat Base	1	
80	R104-8300	104-8300, 104-8300 , 119-4041	Locknut - 5/16-18 Flanged Y/Zinc	10	

All original equipment manufacturers names and part numbers are used for identification purposes only, and we are in no way implying that our products are original equipment parts. Prices subject to change without notice.



# Replaces Toro Reelmaster 5510-D Parts

Traction Unit with Yanmar Engine - Models  
Seat



Item No	R&R Part No.	OEM Part No.	Description	Qty Req	Order Quantity
81	R33114-016	33114-016, 42-9230, 42-9270, 48-7680, 48-7690, 48-7700	Bolt - Hx HD 8mm x 1.25 x 15	4	
82	R108-7582-03	108-7582-03	Pivot Plate Assy	1	
83	R453011	01-166-0100, 01-166-0120, 01-166-0270, 01-166-0500, 01-166-0600, 01-166-0620, 132-4593, 2356-3, 237-12, 24-10-AD, 24-11-AD, 24-11-BD, 24-12-AD, 24-12-BD, 30-9310, 32-8190, 3256-24, 3256-3, 3256-36, 3256-4, 453011, 47-9950, 48-9220, 513458, 7-0052	Washer - Flat 3/8 SAE Y/Zinc	4	
84	R104-8301	104-8301, 104-9301, 109-6658, 133-7570	Locknut - 3/8-16 Nylon Flanged	4	
85	R98-0917	98-0917	Rod-Prop	2	
86	R3231-27	3231-1, 3231-27	Bolt - Carriage 3/8-16 x 7/8	4	

All original equipment manufacturers names and part numbers are used for identification purposes only, and we are in no way implying that our products are original equipment parts. Prices subject to change without notice.



## Replaces Toro Reelmaster 5510-D Parts

*Traction Unit with Yanmar Engine - Models  
Seat*



Item No	R&R Part No.	OEM Part No.	Description	Qty Req	Order Quantity
87	<b>R3230-1</b>	01-173-0506, 3230-1, 3230-20, 900037P	Bolt - Carriage 5/16-18 x 3/4	2	
88	<b>R94-3829</b>	94-3829	Pin - Clevis	1	
89	<b>R1023-4</b>	01-151-0150, 1023-4, 19-6220, 214-14, 215-54, 28-9-D, 3272-4, 3272-6, 513567, 932008P	Pin - Cotter 3/32 x 3/4	1	
89	<b>R3290-307</b>	3290-307	Pin-Hair	4	
90	<b>R104-4821</b>	104-4821	Spring - Torsion - Seat Base	1	
91	<b>R110-8971</b>	110-8971	Latch	1	
92	<b>R110-8972</b>	110-8972	Hook-Latch	1	
93	<b>R12-3270</b>	12-3270, 30-0700, 32104-17, 9266714, Aug-80	Bolt - Hex Washer 1/4-20 x 1/2	2	
94	<b>R108-7584-01</b>	108-7584-01	Plate-Guide, Rod	1	
95	<b>R110-5255</b>	110-5255	Bumper - Base - Seat	2	
96	<b>R240-12</b>	240-12	Grommet	1	
99	<b>R3234-29</b>	3234-17, 3234-29	Bolt - 5/16-18x1 Serr Hex	4	
100	<b>R366653</b>	71-9310	Spacer	4	

All original equipment manufacturers names and part numbers are used for identification purposes only, and we are in no way implying that our products are original equipment parts. Prices subject to change without notice.



# Replaces Toro Reelmaster 5510-D Parts

*Traction Unit with Yanmar Engine - Models  
Seat*



Item No	R&R Part No.	OEM Part No.	Description	Qty Req	Order Quantity
101	R3272-11	01-151-0010, 01-151-0040, 28-18-D, 28-28-D, 3211-72, 3272-11	Pin - Cotter	2	
103	R2412-133	01-651-0160, 2412-133	Clamp	2	

All original equipment manufacturers names and part numbers are used for identification purposes only, and we are in no way implying that our products are original equipment parts. Prices subject to change without notice.