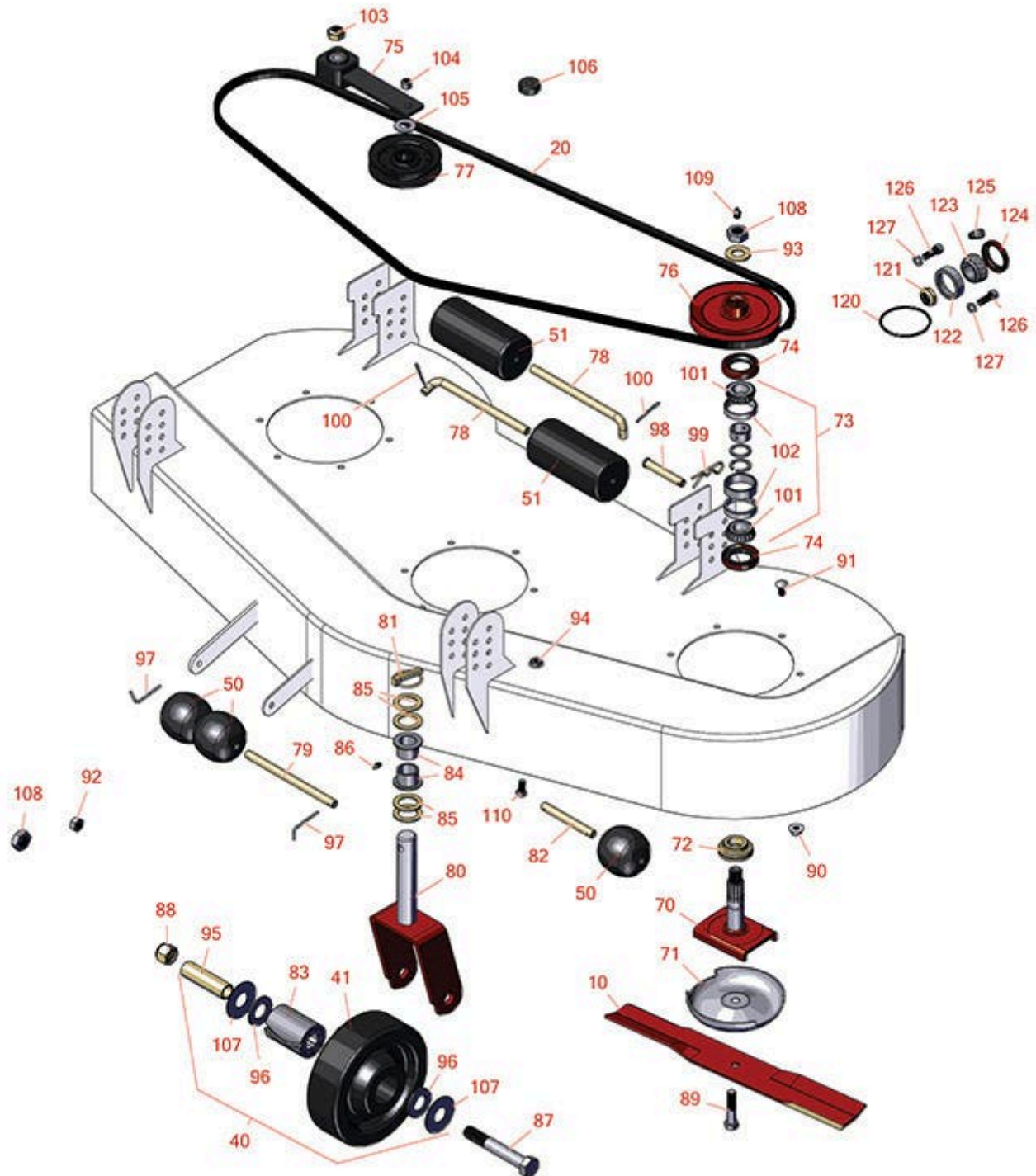




Replaces Toro Groundsmaster 220-D Parts

Rotary Mower - Model 30794

62in Side Discharge Deck - Model 30564



All original equipment manufacturers names and part numbers are used for identification purposes only, and we are in no way implying that our products are original equipment parts. Prices subject to change without notice.



Replaces Toro Groundsmaster 220-D Parts



Rotary Mower - Model 30794

62in Side Discharge Deck - Model 30564

Item No	R&R Part No.	OEM Part No.	Description	Qty Req	Order Quantity
Blades					
10	R44-6250	44-6250, 44-6250-03	Mower Blade	3	
Belts					
20	R44-6260	44-6260	Belt - Deck	1	
Wheels					
40	R27-1050	27-1050, 46-8230	Wheel Assy	2	
41	R27-1190	27-1190	Wheel Only - Gm 52 Deck	2	
Rollers					
50	R29-4820	29-4820	Roller	3	
51	R36-1740	36-1740	Roller - Rotary Deck	2	
Other Parts Available					
70	R27-0920	27-0920	Spindle - Splined - 4-5/8 in	3	
71	R72-9361	27-1000, 27-1001, 72-9360, 72-9361	Cup - Anti-Scalp	3	
72	R27-0950	27-0950	Spacer - Bearing	3	
73	R46-8530	27-0960, 46-8530	Bearing - Set with Rings/Spacers	3	
<i>Tech Note: Includes 2 ea: R254-72 Bearings, R254-94 Cones, Spacers & Rings:</i>					
74	R253-139	253-139	Seal - Spindle	3	
75	R27-8580	100-6178, 27-1060, 27-8580, 99-1297	Socket - Idler	1	

All original equipment manufacturers names and part numbers are used for identification purposes only, and we are in no way implying that our products are original equipment parts. Prices subject to change without notice.



Replaces Toro Groundsmaster 220-D Parts



Rotary Mower - Model 30794

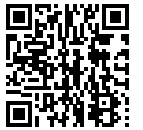
62in Side Discharge Deck - Model 30564

Item No	R&R Part No.	OEM Part No.	Description	Qty Req	Order Quantity
76	R44-6340	44-6340, 44-6340-03	Pulley - Splined 62 Deck	3	
77	R65-5940	65-5940	Pulley - Idler	2	
78	R40-0340	40-0340	Shaft - Rear Roller	2	
79	R40-6400	40-6400	Shaft - Roller	1	
80	R40-0370	40-0370	Caster Fork -Use w/Solid Wheel	2	
81	R3290-384	3290-384	Pin - Lynch Heavy Duty	2	
82	R57-0680	57-0680	Shaft - Roller - 4-1/4	1	
83	R27-1210	27-1210	Bearing - w/Sleeve	2	
84	R94-1291	94-1291	Bushing - Flanged	4	
84	R28-9290	28-9290	Bushing - Steel Castor	4	
85	R3-6781	3-6781	Washer - Thrust - Castor Wheel	8	
86	R302-5	21-6010, 302-11, 302-37, 302-47, 302-5, 302-57, 302-58, 302-6, 31-0300, 32-9660, 60-0800, 62-3880, 92-4181	Fitting - Grease	2	
87	R328-9	01-150-1170, 01-150-1700, 01-178-1240, 328-9	Capscrew - 3/4-10 x 5	2	
88	R32153-6	32153-6	Locknut - 3/4-10 ESNA Zinc	2	

All original equipment manufacturers names and part numbers are used for identification purposes only, and we are in no way implying that our products are original equipment parts. Prices subject to change without notice.



Replaces Toro Groundsmaster 220-D Parts



Rotary Mower - Model 30794

62in Side Discharge Deck - Model 30564

Item No	R&R Part No.	OEM Part No.	Description	Qty Req	Order Quantity
89	R44-2200	3213-22, 44-2200	Bolt - Blade	3	
90	R32128-21	32128-21	Locknut - Flanged 3/8-16 Whiz Top Lock	18	
91	R3231-22	900234P	Bolt - Carriage 3/8-16 x 1	20	
92	R32153-5	32153-5	Locknut - 1/2-13	2	
93	R7-4150	7-4150	Washer	3	
94	R32128-43	30-8990, 32128-43, 3290-357	Nut - Flanged Whiz - 3/8-16	10	
95	R27-1200	27-1200, 46-8640, 54-8860	Spacer - Front Deck Wheel	2	
96	R27-1180	27-1180	Washer - Brg. Retainer	4	
97	R57-0690	57-0690	Pin - Roller Shaft	2	
98	R283-55	283-55	Clevis Pin - 1/2 x 3	4	
99	R3290-355	01-159-0050, 3290-355, 58-5370	Pin - Bridge - Snap	4	
100	R3272-11	01-151-0010, 01-151-0040, 28-18-D, 28-28-D, 3211-72, 3272-11	Pin - Cotter	4	
101	R254-94	1-543509, 254-94, 32-8090, 32-8240, 32-9640, 40440, 62-3330	Tapered Bearing Cone	2	

All original equipment manufacturers names and part numbers are used for identification purposes only, and we are in no way implying that our products are original equipment parts. Prices subject to change without notice.



Replaces Toro Groundsmaster 220-D Parts



Rotary Mower - Model 30794

62in Side Discharge Deck - Model 30564

Item No	R&R Part No.	OEM Part No.	Description	Qty Req	Order Quantity
102	R254-72	01-103-0050, 01-103-0120, 01-103-0140, 1-543508, 254-71, 254-72, 40439, 62-3340, 99-4511	Cup - Bearing	2	
103	R3296-33	3296-33	Locknut - 5/8-18 ESNA Jam	1	
104	R3296-5	3296-5	Locknut - 3/8-24 Jam Nylon	2	
105	R3256-27	24-15-BD, 32-7820, 3256-27, 7-0131, Jul-78	Washer - Flat 5/8 SAE	1	
106	R63-9750	63-9750, 64-9750	Mount - Rubber	4	
107	R27-1170	27-1170	Washer - Thrust	0	
108	R444742	32146-20, 9150906, 915090P	Nut - 3/4-16 Gripco Centerlock	3	
109	R471219	30-8360, 302-2, 302-24, 302-31, 302-52, 471219	Zerk - Grease	3	
110	R400258	01-150-0800, 01-178-0600, 01-178-0606, 20-45-AD, 31-0200, 31-9910, 3224-1, 323-4, 400258	Bolt - Hex HD 3/8-16 x 3/4	2	

All original equipment manufacturers names and part numbers are used for identification purposes only, and we are in no way implying that our products are original equipment parts. Prices subject to change without notice.



Replaces Toro Groundsmaster 220-D Parts



Rotary Mower - Model 30794

62in Side Discharge Deck - Model 30564

Item No	R&R Part No.	OEM Part No.	Description	Qty Req	Order Quantity
120	R237-97	237-97	O-Ring - Gear Box	2	
121	R3296-15	116-7306, 32118-5, 32127-23, 32127-47, 3296-15	Locknut - 3/4-16 Nylon Jam	2	
122	R254-90	21-6120, 21-6430, 21-8390, 254-90, 32-8180	Tapered Bearing Cup	4	
123	R254-91	254-91	Tapered Bearing Cone	4	
124	R253-137	253-137	Seal - Gear Box	2	
125	R302-14	302-14	Fitting - Relief	1	
126	R3274-7	3247-7, 3274-7	Bolt - Soc HD Cap 3/8-16 x 1	5	
127	R3253-21	215-51, 30-8470, 3253-21, Jul-12	Washer - Lock 3/8	2	

All original equipment manufacturers names and part numbers are used for identification purposes only, and we are in no way implying that our products are original equipment parts. Prices subject to change without notice.