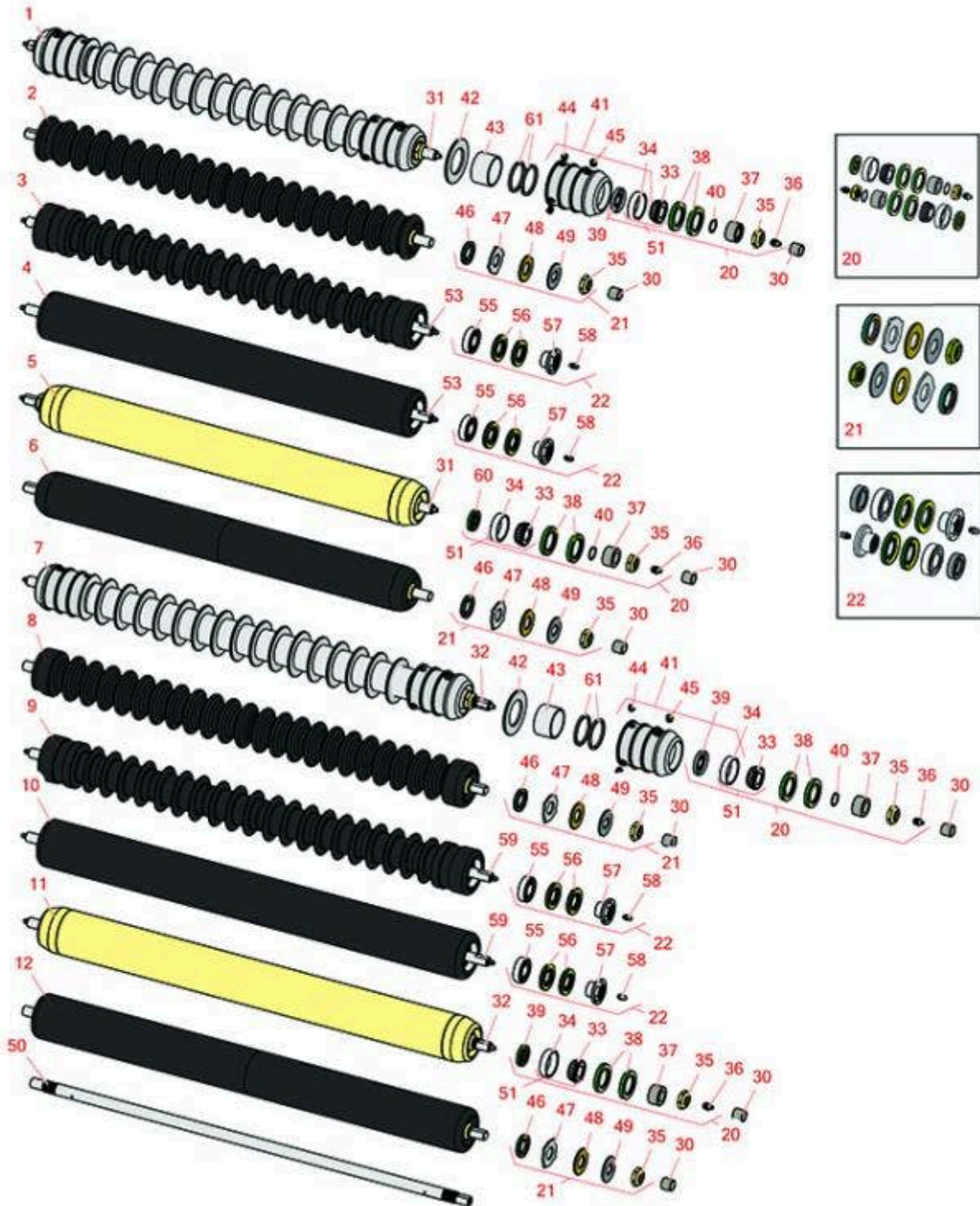
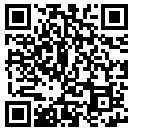




# Replaces John Deere 2653B Reel Mower

## Parts

Cutting Unit - Serial up to 030000  
Rollers



All original equipment manufacturers names and part numbers are used for identification purposes only, and we are in no way implying that our products are original equipment parts. Prices subject to change without notice.



# Replaces John Deere 2653B Reel Mower Parts

Cutting Unit - Serial up to 030000  
Rollers



| Item No | R&R Part No. | OEM Part No. | Description | Qty Req | Order Quantity |
|---------|--------------|--------------|-------------|---------|----------------|
|---------|--------------|--------------|-------------|---------|----------------|

## R&R 26" Front Rollers

|   |                |                     |  |   |  |
|---|----------------|---------------------|--|---|--|
| 1 | <b>R500509</b> | AMT2968,<br>BM25318 | Roller - Grooved Repairable Steel - 26 | 0 |  |
|---|----------------|---------------------|--|---|--|

*Tech Note: Constructed with a through shaft and greasable ball bearings. This roller can be repaired by unscrewing the ends and replacing the series of washers and spacers.:*

|   |                 |  |                                    |   |  |
|---|-----------------|--|------------------------------------|---|--|
| 2 | <b>R1203500</b> |  | Roller - Grooved UHMW Polyethylene | 0 |  |
|---|-----------------|--|------------------------------------|---|--|

*Tech Note: Machined from solid UHMW, this low maintenance roller rotates around a 1" solid stainless steel shaft and requires no bearings or grease. Patented groove design and smooth UHMW material prevents build-up of debris.:*

|   |                 |  |   |   |  |
|---|-----------------|--|---|---|--|
| 3 | <b>R1203830</b> |  | Roller - Fusion Grooved UHMW Polyethylene - 26 in | 0 |  |
|---|-----------------|--|---|---|--|

*Tech Note: Fusion Rollers combine the best features of our UHMW plastic rollers with a heavy-duty internal bearing system. Machined from solid UHMW plastic that prevents build-up of debris. This roller has a patented deep groove design and ... <Click Part# for more>:*

## R&R 26" Rear Rollers

|   |                 |  |  |   |  |
|---|-----------------|--|--|---|--|
| 4 | <b>R1203835</b> |  | Roller - Fusion Smooth UHMW Polyethylene - 26 in | 0 |  |
|---|-----------------|--|--|---|--|

*Tech Note: Fusion Rollers combine the best features of our UHMW plastic rollers with a heavy-duty internal bearing system. Machined from solid UHMW plastic that prevents build-up of debris. This roller turns on precision stainless ball bear... <Click Part# for more>:*

|   |                  |         |   |   |  |
|---|------------------|---------|---|---|--|
| 5 | <b>RAET11265</b> | AMT2969 | Roller - Smooth Heavy Duty Tubular Steel - 26 | 0 |  |
|---|------------------|---------|---|---|--|

*Tech Note: Constructed with a through shaft, this heavy-duty roller uses tapered bearings for extended life.:*

|   |                 |  |                                   |   |  |
|---|-----------------|--|-----------------------------------|---|--|
| 6 | <b>R1203521</b> |  | Roller - Smooth UHMW Polyethylene | 0 |  |
|---|-----------------|--|-----------------------------------|---|--|

*Tech Note: Machined from solid UHMW, this low maintenance roller uses a 1" solid stainless steel shaft and requires no grease. UHMW material prevents build-up of debris.:*

## R&R 30" Front Rollers

All original equipment manufacturers names and part numbers are used for identification purposes only, and we are in no way implying that our products are original equipment parts. Prices subject to change without notice.



# Replaces John Deere 2653B Reel Mower Parts

Cutting Unit - Serial up to 030000  
Rollers



| Item No | R&R Part No. | OEM Part No. | Description | Qty Req | Order Quantity |
|---------|--------------|--------------|-------------|---------|----------------|
|---------|--------------|--------------|-------------|---------|----------------|

|   |                |                     |  |   |  |
|---|----------------|---------------------|--|---|--|
| 7 | <b>R500514</b> | AMT2977,<br>BM25319 | Roller - Grooved Repairable Steel - 30 | 0 |  |
|---|----------------|---------------------|--|---|--|

*Tech Note: Constructed with a through shaft and greasable ball bearings. This roller can be repaired by unscrewing the ends and replacing the series of washers and spacers.:*

|   |                 |  |                                    |   |  |
|---|-----------------|--|------------------------------------|---|--|
| 8 | <b>R1203510</b> |  | Roller - Grooved UHMW Polyethylene | 0 |  |
|---|-----------------|--|------------------------------------|---|--|

*Tech Note: Machined from solid UHMW, this low maintenance roller rotates around a 1" solid stainless steel shaft and requires no bearings or grease. Patented groove design and smooth UHMW material prevents build-up of debris.:*

|   |                 |  |   |   |  |
|---|-----------------|--|---|---|--|
| 9 | <b>R1203840</b> |  | Roller - Fusion Grooved UHMW Polyethylene - 30 in | 0 |  |
|---|-----------------|--|---|---|--|

*Tech Note: Fusion Rollers combine the best features of our UHMW plastic rollers with a heavy-duty internal bearing system. Machined from solid UHMW plastic that prevents build-up of debris. This roller has a patented deep groove design and ... <Click Part# for more>:*

## R&R 30" Rear Rollers

|    |                 |  |  |   |  |
|----|-----------------|--|--|---|--|
| 10 | <b>R1203845</b> |  | Roller - Fusion Smooth UHMW Polyethylene - 30 in | 0 |  |
|----|-----------------|--|--|---|--|

*Tech Note: Fusion Rollers combine the best features of our UHMW plastic rollers with a heavy-duty internal bearing system. Machined from solid UHMW plastic that prevents build-up of debris. This roller turns on precision stainless ball bear... <Click Part# for more>:*

|    |                 |         |   |   |  |
|----|-----------------|---------|---|---|--|
| 11 | <b>RAMT1056</b> | AMT2976 | Roller - Smooth Heavy Duty Tubular Steel - 30 | 0 |  |
|----|-----------------|---------|---|---|--|

*Tech Note: Constructed with a through shaft, this heavy duty roller uses tapered bearings for extended life.:*

|    |                 |  |                                   |   |  |
|----|-----------------|--|-----------------------------------|---|--|
| 12 | <b>R1203530</b> |  | Roller - Smooth UHMW Polyethylene | 0 |  |
|----|-----------------|--|-----------------------------------|---|--|

*Tech Note: Machined from solid UHMW, this low maintenance roller uses a 1" solid stainless steel shaft and requires no grease. UHMW material prevents build-up of debris.:*

## Overhaul Kits

|    |                  |          |                       |   |  |
|----|------------------|----------|-----------------------|---|--|
| 20 | <b>RAET10632</b> | AET10632 | Overhaul Kit - Roller | 1 |  |
|----|------------------|----------|-----------------------|---|--|

All original equipment manufacturers names and part numbers are used for identification purposes only, and we are in no way implying that our products are original equipment parts. Prices subject to change without notice.



# Replaces John Deere 2653B Reel Mower Parts

Cutting Unit - Serial up to 030000  
Rollers



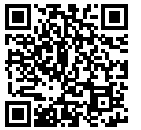
| Item No  | R&R Part No.     | OEM Part No.                 | Description                     | Qty Req | Order Quantity |
|--|------------------|------------------------------|---------------------------------|---------|----------------|
| <i>Tech Note: Includes 4 ea: RET15755 Seal; 2 ea: R237-54 O-Ring, R253-122 Seal, R254-78 Bearing, R254-79 Cup, R3296-15 Locknut, R471219 Grease Zerk, RET15726 Sleeve, RET15756 Seal:</i>  |                  |                              |                                 |         |                |
| 21   | <b>R101399</b>   |                              | Overhaul Kit - UHMW 2 Pc Roller | 1       |                |
| <i>Tech Note: Fits all R&amp;R 2-1/2" - 3-1/2" Dia. Black UHMW Plastic Rollers that do not use ball bearings.. Includes 2 ea.: R1503230 Star Washers, R1503470 Seals, R150333 Thrust Washers, R3296-15 Locknuts, R1503471 Bronze Thrust Washers:</i> |                  |                              |                                 |         |                |
| 22   | <b>R114-5430</b> |                              | Overhaul Kit - Roller           | 1       |                |
| <i>Tech Note: Includes 4 ea.: R112-7494 Seals; 2 ea.: R302-5 Grease Zerks, R114-3717 Seals, R112-5290 Bearings &amp; R114-3745 Locknuts:</i>   |                  |                              |                                 |         |                |
| <b>Other Parts Available</b>   |                  |                              |                                 |         |                |
| 30   | <b>RMT74</b>     | MT74                         | Bushing - Roller Bkt            | 2       |                |
| 31   | <b>RET17514</b>  | ET17514                      | Shaft - 26 Roller               | 1       |                |
| 32   | <b>RMT1986</b>   | MT1986                       | Shaft - 30 Roller               | 1       |                |
| 33   | <b>R254-78</b>   | JD8188                       | Tapered Bearing Cone            | 2       |                |
| 34   | <b>R254-79</b>   | JD8226                       | Cup - Bearing                   | 2       |                |
| <i>Tech Note: Use R254-79M installation mandrel to properly install race.:</i>   |                  |                              |                                 |         |                |
| 35   | <b>R3296-15</b>  | N101345                      | Locknut - 3/4-16 Nylon Jam      | 2       |                |
| 36   | <b>R471219</b>   | 471219,<br>JD7759,<br>JD7798 | Zerk - Grease                   | 2       |                |
| 37   | <b>RET15726</b>  | ET15726,<br>RET15726         | Sleeve - Wear Hardened          | 2       |                |
| 38   | <b>RET15755</b>  | ET15755                      | Seal - Oil                      | 4       |                |
| 39   | <b>R253-122</b>  | 253-122                      | Seal                            | 2       |                |
| 40   | <b>R237-54</b>   | U46731,<br>U6731             | O-Ring - Small                  | 2       |                |

All original equipment manufacturers names and part numbers are used for identification purposes only, and we are in no way implying that our products are original equipment parts. Prices subject to change without notice.



# Replaces John Deere 2653B Reel Mower Parts

*Cutting Unit - Serial up to 030000  
Rollers*



| Item No | R&R Part No. | OEM Part No.                 | Description                    | Qty Req | Order Quantity |
|---------|--------------|------------------------------|--------------------------------|---------|----------------|
| 41      | R150661      |                              | Tube - Threaded Fits R500509   | 1       |                |
| 41      | R150662      |                              | Tube - Threaded Grooved Rlr    | 1       |                |
| 41      | R500511      |                              | Roller End - Threaded 3        | 2       |                |
| 42      | R150673      |                              | Washer - 3 Repairable Roller   | 0       |                |
| 43      | R150676      |                              | Spacer - 2-3/4 Dia x 1-1/4 L   | 0       |                |
| 44      | R150691      |                              | Screw - Set Nyloc 3/8-16 x 3/8 | 4       |                |
| 45      | R170714      | E14814                       | Fitting - Pressure Relief      | 2       |                |
| 46      | R1503470     |                              | Seal - Inner Wiper             | 2       |                |
| 47      | R1503230     |                              | Washer - Thrust Outer Keyed    | 2       |                |
| 48      | R1503471     |                              | Washer - Thrust SAE660 Bronze  | 2       |                |
| 49      | R150333      |                              | Washer - Flat Keyed Outer SS   | 2       |                |
| 50      | RET16934     | ET16934                      | Shaft - Roller                 | 1       |                |
| 51      | R500534      |                              | Bearing - with Cup             | 2       |                |
| 53      | R1203831     |                              | Shaft - Fusion Roller          | 1       |                |
| 55      | R112-5290    |                              | Bearing - Stainless            | 2       |                |
| 56      | R112-7494    |                              | Seal                           | 4       |                |
| 57      | R114-3745    |                              | Locknut - Bearing - Stainless  | 2       |                |
| 58      | R302-5       | JD7797,<br>JD7842,<br>JD7844 | Fitting - Grease               | 2       |                |
| 59      | R1203841     |                              | Shaft - Fusion Roller          | 1       |                |
| 60      | RET15756     | ET15756,<br>MT1739,<br>MT739 | Seal                           | 2       |                |

All original equipment manufacturers names and part numbers are used for identification purposes only, and we are in no way implying that our products are original equipment parts. Prices subject to change without notice.



# Replaces John Deere 2653B Reel Mower Parts



*Cutting Unit - Serial up to 030000  
Rollers*

| Item No | R&R Part No. | OEM Part No. | Description  | Qty Req | Order Quantity |
|---------|--------------|--------------|--------------|---------|----------------|
| 61      | R150676A     |              | Spacer - 1/8 | 4       |                |

All original equipment manufacturers names and part numbers are used for identification purposes only, and we are in no way implying that our products are original equipment parts. Prices subject to change without notice.